



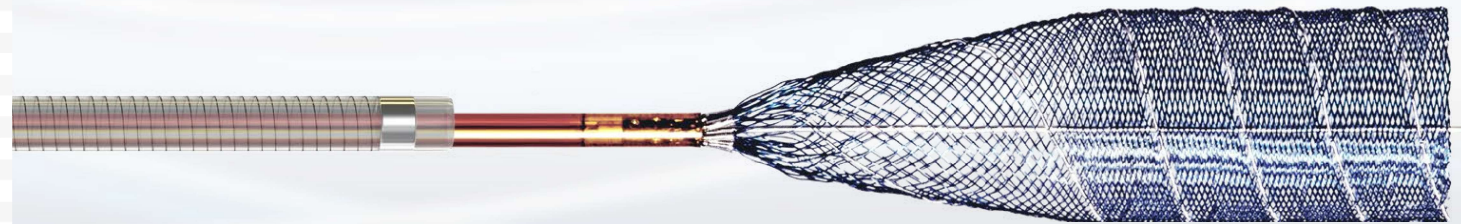
**p64**  
Flow Modulation Device

phenox

### Specifications

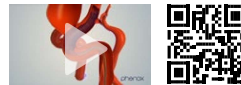
REF	Max. vessel diameter [mm]	Working length in max. vessel [mm]*	Min. vessel diameter [mm]	Working length in min. vessel [mm]*
P64-250-9	2,5	9	2	13
P64-300-9	3	9	2,5	12
P64-300-12	3	12	2,5	16
P64-300-15	3	15	2,5	21
P64-350-9	3,5	9	3	13
P64-350-12	3,5	12	3	17
P64-350-15	3,5	15	3	21
P64-350-18	3,5	18	3	25
P64-350-21	3,5	21	3	29
P64-400-12	4	12	3,5	13
P64-400-15	4	15	3,5	17
P64-400-18	4	18	3,5	21
P64-400-21	4	21	3,5	25
P64-400-24	4	24	3,5	28
P64-400-27	4	27	3,5	32
P64-450-15	4,5	15	4	22
P64-450-18	4,5	18	4	25
P64-450-21	4,5	21	4	29
P64-450-24	4,5	24	4	33
P64-450-27	4,5	27	4	40
P64-500-18	5	18	4,5	20
P64-500-24	5	24	4,5	28
P64-500-30	5	30	4,5	37

\*Working length is defined as length of implant without proximal bonded implant ends, measured in silicone vessel without aneurysm neck.



See the p64 in action

Scan the QR-code or visit: <https://goo.gl/2dx0Zc>

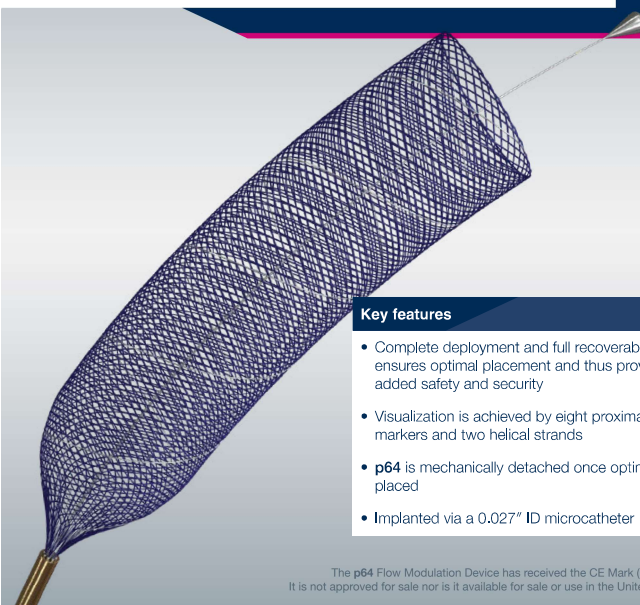


The power of safety and security -  
Complete deployment with full recoverability

phenox

**p64**

Flow Modulation Device



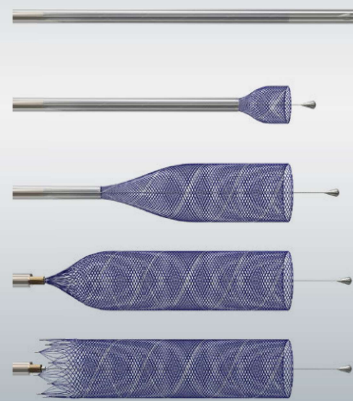
**Key features**

- Complete deployment and full recoverability ensures optimal placement and thus provides added safety and security
- Visualization is achieved by eight proximal markers and two helical strands
- **p64** is mechanically detached once optimally placed
- Implanted via a 0.027" ID microcatheter

The p64 Flow Modulation Device has received the CE Mark (CE 0297). It is not approved for sale nor is it available for sale or use in the United States.

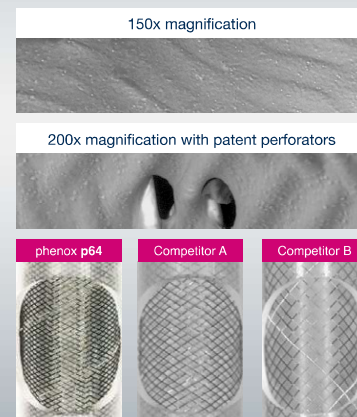
**Ease of Use**

**p64** offers a new level of operator security and patient safety by allowing complete deployment with full recoverability.



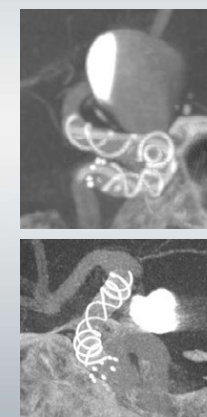
**Neck Coverage**

64 Nitinol wire braid maximizes hemodynamic flow effect in the aneurysm.



© 4.0 mm device in 0.375 mm clip-on tube; data on file

Excellent visibility due to helical strands and eight proximal markers.



Case images by courtesy of Prof. Dr. Pedro Luján, Clínica La Sagrada Familia, Buenos Aires, Argentina.

