

SonoScape



Mob. 079410042



Station	Separated
Video output	SDI, DVI, VGA, CVBS, S-video
Resolution	1080p
Chromo	SFI/VIST
Digital Zoom	1.4x, 1.6x, 1.8x
Patient Data	≥ 10,000 records
IRIS	Peak/Avg/Auto
Color adjustment	Red, Blue, Chroma, ±15 levels
Air feeding	4 levels (Off/L/M/H)
AGC	Yes
Data Management	500G Built-in, 5 USB, DICOM
White Balance	Auto-saved
Image enhancement	Structure enhancement, Edge enhancement
Contrast/denoise	L/M/H, auto-denoise
Dimension (mm)	480x370x125

VLS-55 SERIES LIGHT SOURCE

Main Lamp	Four LED lamps of different colors
White light mode	High color rendering index and high luminous flux
SFI/VIST	High brightness and specific spectra in the 2 special light modes
Brightness	Auto/Manual, 1-19 levels
Transillumination mode	6-8 seconds
Service time	10000 hours (Continuous use)
Hot plugging	Yes
Dimension (mm)	473x370x154

550 SERIES SCOPES

	EG-550	EG-550L	EC-550	EC-550T	EC-550L	EC-550L/T
Field of view	140°	140°	140°	140°	140°	140°
Depth of view	3-100mm	3-100mm	3-100mm	3-100mm	3-100mm	3-100mm
Distal End Dia.	9.3mm	9.8mm	12mm	12mm	12.9mm	12.9mm
Insertion Dia.	9.3mm	9.8mm	12.5mm	12.5mm	12.9mm	12.9mm
Instrument Dia.	2.8mm	3.2mm	3.8mm	3.8mm	4.2mm	4.2mm
Angulation	U210°, D90°, L/R100°		U/D180°, L/R160°			
Working length	1050mm	1050mm	1350mm	1700mm	1350mm	1700mm
Water Jet	Yes	Yes	Yes	Yes	Yes	Yes
OneTouch	Yes	Yes	Yes	Yes	Yes	Yes
Optical Fiber Trans	Yes	Yes	Yes	Yes	Yes	Yes

# BOOSTED BRILLIANCE AT EVERY TURN

HD-550,  
Full High Definition Video Endoscopy System  
with 4-LED Light Source and SFI/VIST Technology



SonoScape Medical Corp.  
2F, 12<sup>th</sup> Building, Shenzhen Software Park Phase II, Keji Middle  
2<sup>nd</sup> Road, Shenzhen, China  
Tel: +86-755-26722890 Fax: +86-755-26722850  
Email: market@sonoscape.net www.sonoscape.com

ISO 13485 CE 0197

E-HD55020190929



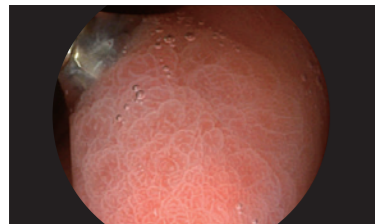
Introducing a boosted brilliance at every turn on your way to image clarity. HD-550 is now equipped with the 4-LED light source, and an upgraded scope tubing. Supporting 1080p resolution, the added brightness provides even more image details under all light modes, and truly smooths the path in both diagnostic and therapeutic procedures.



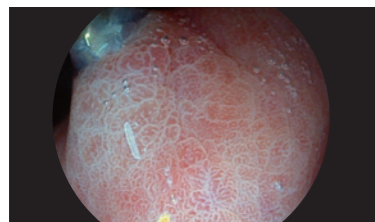
## Boosted Image Performance

The 4-LED light source enables multi-spectrum and multi-mode imaging. Its versatility not only allows a superior brightness under the White Light mode, but also an uncompromised illumination under chromoendoscopy modes SFI<sup>1</sup> and VIST<sup>2</sup>, where the vascular color contrast and mucosal structure are greatly enhanced. You will get much more from this level of image performance.

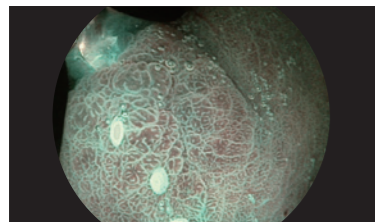
White-light Mode (Default)	SFI Mode	VIST Mode
<ul style="list-style-type: none"> <li>• Highly illuminated image</li> <li>• True to color</li> <li>• Suitable for routine observation</li> </ul>	<ul style="list-style-type: none"> <li>• Normal-focus mode with enhanced structure and color</li> <li>• Supporting in detection and demarcation of the lesions</li> </ul>	<ul style="list-style-type: none"> <li>• Near-focus mode with increased mucosal contrast</li> <li>• Assisting in characterization of the lesions and diagnosis</li> </ul>



White Light



SFI



VIST



## Boosted Life span

The 4-LED light source comes with an extended life span. Enjoy the reliable brightness for much longer before thinking about bulb replacement.



## Boosted Maneuverability



### Ergonomic experience

A new scope tubing paired with a light-weight handle, the upgraded 550 series scopes offer great comfort and ease during routine and complex operations, helping to shorten the procedure time, and to reduce both patients' discomfort and yours.

### Fulfilling visual field

After an easy intubation, observe to full extent owing to the scope's short bending radius and large field of vision. Diagnose and treat with confidence, thanks to its water jet function and generous instrument channel.



### Ingenious design

One-Touch connection, and real water-proof, the 550 series scopes can be plugged and unplugged, cleaned and disinfected straightforwardly at a minimal risk of water damage by mismanipulation, which indeed lightens your team's workload.

<sup>1</sup>SFI: Spectral Focused Imaging

<sup>2</sup>VIST: Variable Intelligent Staining Technology