



# 3-LUMEN PAPILOTOME

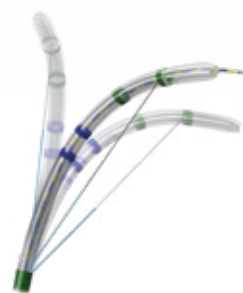
## FOR PRECISE WIRE GUIDANCE AND CANNULATION

Positioning, cannulation and resection are the decisive features of a safe and successful papillotomy. The 3-lumen papillotome from MICRO-TECH meets these requirements in every way: Emerging from the working channel in the correct position, the atraumatic tip, tapered to 5 Fr, supports cannulation and the resection is done reliably at the "11 o'clock" marker. Maximum safety during resection

is also provided by optional proximal insulation of the cutting wire. The three lumens for cutting wire, guide wire and contrast media provide for a high level of safety and efficient contrast injection. Thanks to the ergonomic 3-ring grip handle, this papillotome is highly user-friendly and easy to control.

### SPECIFIC CHARACTERISTICS

- 3 lumen for guide wire, cutting wire and contrast injection
- Optional insulation of proximal cutting wire
- Cutting direction at 11 o'clock
- Filiform tip, tapered to 5 Fr
- Working length: 2.000 mm
- Outer diameter: 2.5 mm
- Guide wire compatible fully mobile up to 0.035 inch



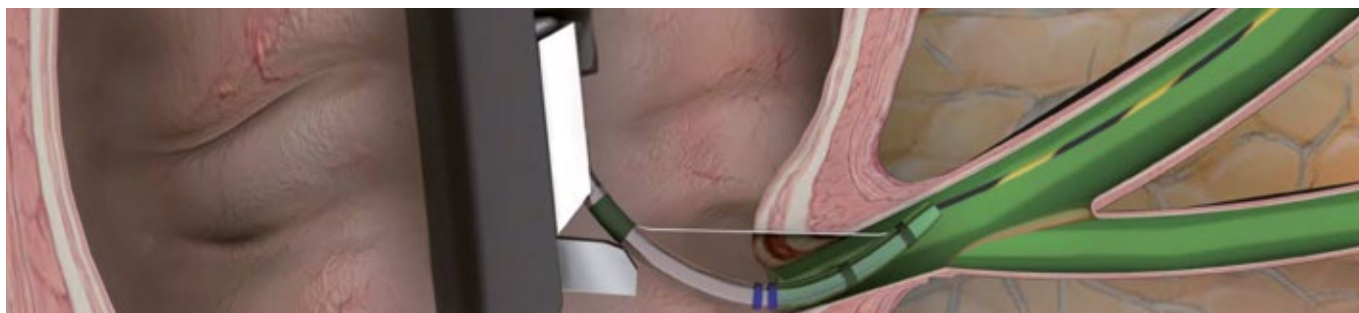
Precise adjustment function



Tip: Precut



Tip: Needle knife



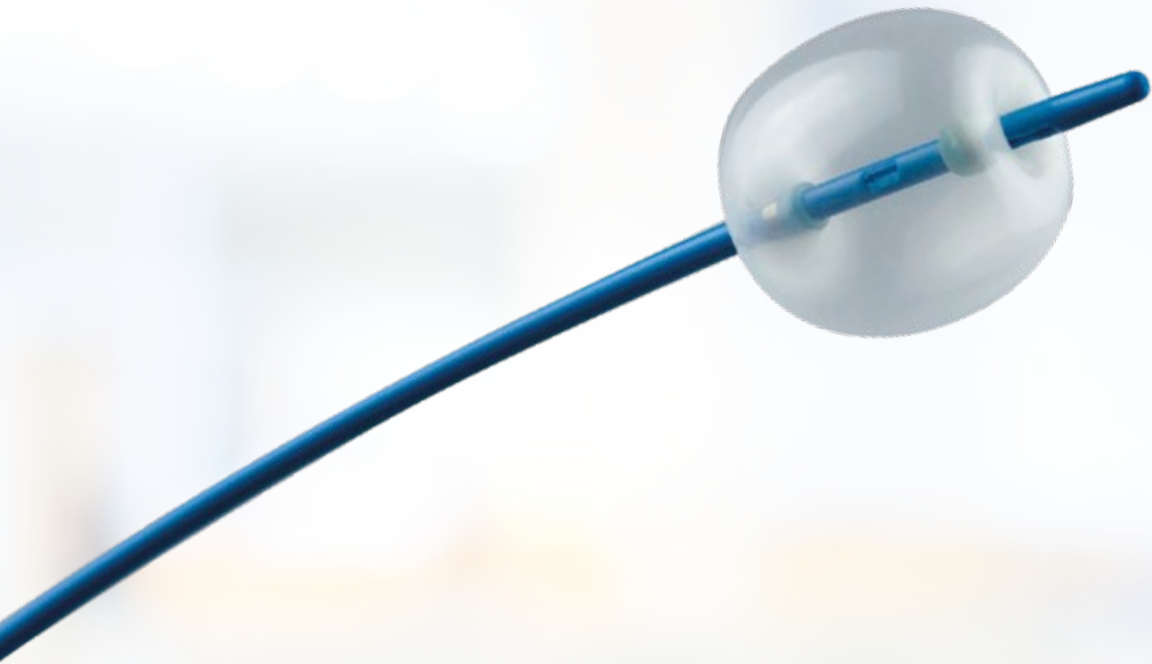
## SPECIFICATIONS

REF	Tip length mm	Cutting wire length mm	Partly insulated cutting wire	Preloaded guide wire	Ø working channel mm
<b>PAPILLOTOME, 3-LUMEN, CONE-TIP</b>					
DSP-30020-111111	0	20	No	No	2.8
DSP-30020-111211	0	20	Yes	No	2.8
DSP-30025-111111	0	25	No	No	2.8
DSP-30025-111211	0	25	Yes	No	2.8
DSP-30030-111111	0	30	No	No	2.8
DSP-30030-111211	0	30	Yes	No	2.8
DSP-30220-111111	2	20	No	No	2.8
DSP-30220-111211	2	20	Yes	No	2.8
DSP-30225-111111	2	25	No	No	2.8
DSP-30225-111211	2	25	Yes	No	2.8
DSP-30230-111111	2	30	No	No	2.8
DSP-30230-111211	2	30	Yes	No	2.8
DSP-30520-111111	5	20	No	No	2.8
DSP-30520-111211	5	20	Yes	No	2.8
DSP-30525-111111	5	25	No	No	2.8
DSP-30525-111211	5	25	Yes	No	2.8
DSP-30530-111111	5	30	No	No	2.8
DSP-30530-111211	5	30	Yes	No	2.8
DSP-30020-111121	0	20	No	Yes	2.8
DSP-30020-111221	0	20	Yes	Yes	2.8
DSP-30025-111121	0	25	No	Yes	2.8
DSP-30025-111221	0	25	Yes	Yes	2.8
DSP-30030-111121	0	30	No	Yes	2.8
DSP-30030-111221	0	30	Yes	Yes	2.8
DSP-30220-111121	2	20	No	Yes	2.8
DSP-30220-111221	2	20	Yes	Yes	2.8
DSP-30225-111121	2	25	No	Yes	2.8
DSP-30225-111221	2	25	Yes	Yes	2.8
DSP-30230-111121	2	30	No	Yes	2.8
DSP-30230-111221	2	30	Yes	Yes	2.8
DSP-30520-111121	5	20	No	Yes	2.8
DSP-30520-111221	5	20	Yes	Yes	2.8
DSP-30525-111121	5	25	No	Yes	2.8
DSP-30525-111221	5	25	Yes	Yes	2.8
DSP-30530-111121	5	30	No	Yes	2.8
DSP-30530-111221	5	30	Yes	Yes	2.8
<b>PAPILLOTOME, 3-LUMEN, NEEDLE KNIFE</b>					
DSP-30505-121111	0	5	No	No	2.8
DSP-30505-121211	0	5	Yes	No	2.8
DSP-30507-121111	0	7	No	No	2.8
DSP-30507-121211	0	7	Yes	No	2.8

Recommended guide wires 0.035": MTN-BM 89/45-A (straight), 600358-5 (straight), 600359-5 (J-Tip)

Recommended guide wires 0.025": MTN-BM 63/26-A (straight) and 600384-5 (straight)

Packaging unit: 2 pieces



# STONE EXTRACTION BALLOONS

## ONE BALLOON, THREE DIAMETERS

MICRO-TECH's vast product range includes high-quality 3-lumen extraction balloons for reliable removal of small stones and sludge from the bile duct. The conical, atraumatic tip of the catheter makes for easy, precise positioning using the two x-ray markers. The cylindrical balloon itself is made of high-quality latex and can be expanded to three different diameters. A specially calibrated single-use

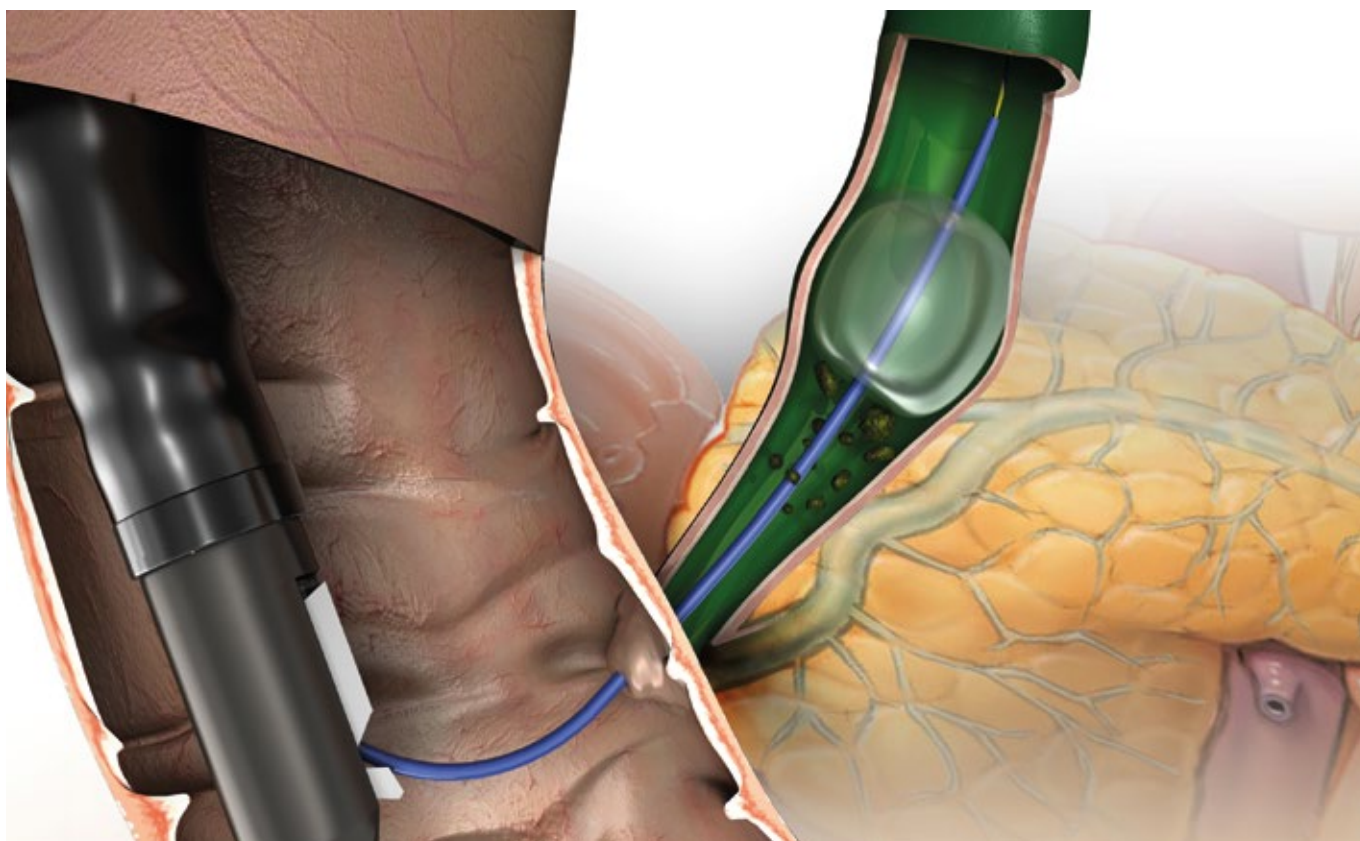
syringe is supplied for each balloon diameter. Following insufflation, the balloon surface lies flat against the bile duct wall, enabling efficient and complete cleaning of the bile duct. A separate lumen for a 0.035 inch guidewire and one for contrast media, provide for ease of handling and contrast injection.

### SPECIFIC CHARACTERISTICS

- 3-stage balloons
- One calibrated tip per diameter
- 3 lumens for insufflation, guidewire and contrast agent
- High X-ray visibility (radiopacity)



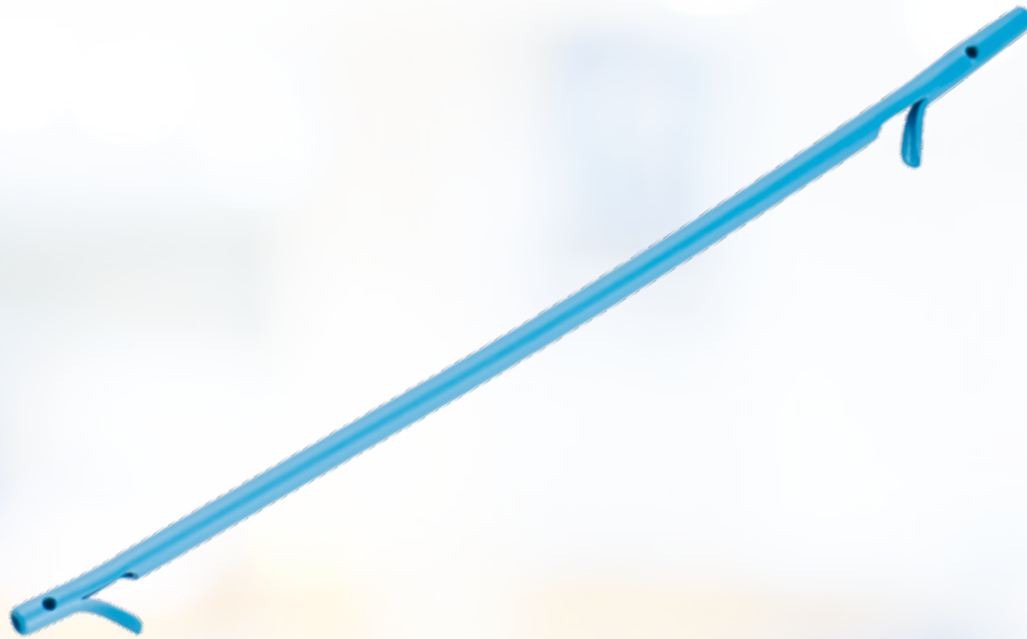
3-lumen stone extraction balloon from MICRO-TECH



## SPECIFICATIONS

REF	Ø inches	Total length mm	Tip length mm	Tip form	Set-up	Covering
<b>CLASSIC GUIDE WIRE</b>						
600382-5	0.035"	4200	130	straight	hydrophilic, radiopaque	extra stiff $\pm$ 0.035"
<b>HYDRO-SLIDE GUIDE WIRE</b>						
MTN-BM-63/45-A-S	0.025"	4500	60	straight	hydrophilic, radiopaque	extra stiff $\pm$ 0.035"
MTN-BM-63/45-A-J-S	0.025"	4500	60	J-form	hydrophilic, radiopaque	extra stiff $\pm$ 0.035"
REF		Injection	Lumen	Catheter Ø Fr.	Balloon Ø mm	Working length mm
<b>STONE EXTRACTION BALLOONS</b>						
SRB-T-9/12/15-20		Above (distal to the balloon)	3	7	9 / 12 / 15	2000
SRB-T-12/15/18-20		Above (distal to the balloon)	3	7	12 / 15 / 18	2000
SRB-T-15/18/21-20		Above (distal to the balloon)	3	7	15 / 18 / 21	2000
SRB-T-9/12/15-20-B		Below (proximal to the balloon)	3	7	9 / 12 / 15	2000
SRB-T-12/15/18-20-B		Below (proximal to the balloon)	3	7	12 / 15 / 18	2000
SRB-T-15/18/21-20-B		Below (proximal to the balloon)	3	7	15 / 18 / 21	2000

Recommended guidewires: MTN-BM 89/45-A (0.035 straight) and 600358-5 (0.035 straight)  
Packaging unit: 1 piece



# PLASTIC BILE DUCT STENTS

## MAXIMUM DRAINAGE, MAXIMUM HOLD

MICRO-TECH offers a comprehensive range of plastic stents for short and medium-term drainage in the bile duct. The stents are available in different shapes, lengths and diameters. Thus, the ideal stent is available for each indication. The high-quality PE-/PTFE-material of the stents ensures reliable drainage and adapts optimally

to the anatomy of the patient. Flaps at the ends of the stents also ensure a secure hold with minimal migration. For rapid and safe implantation, the stents are available both individually and on pre-loaded systems. In addition, MICRO-TECH also offers introduction-systems in all relevant sizes.

### SPECIFIC CHARACTERISTICS

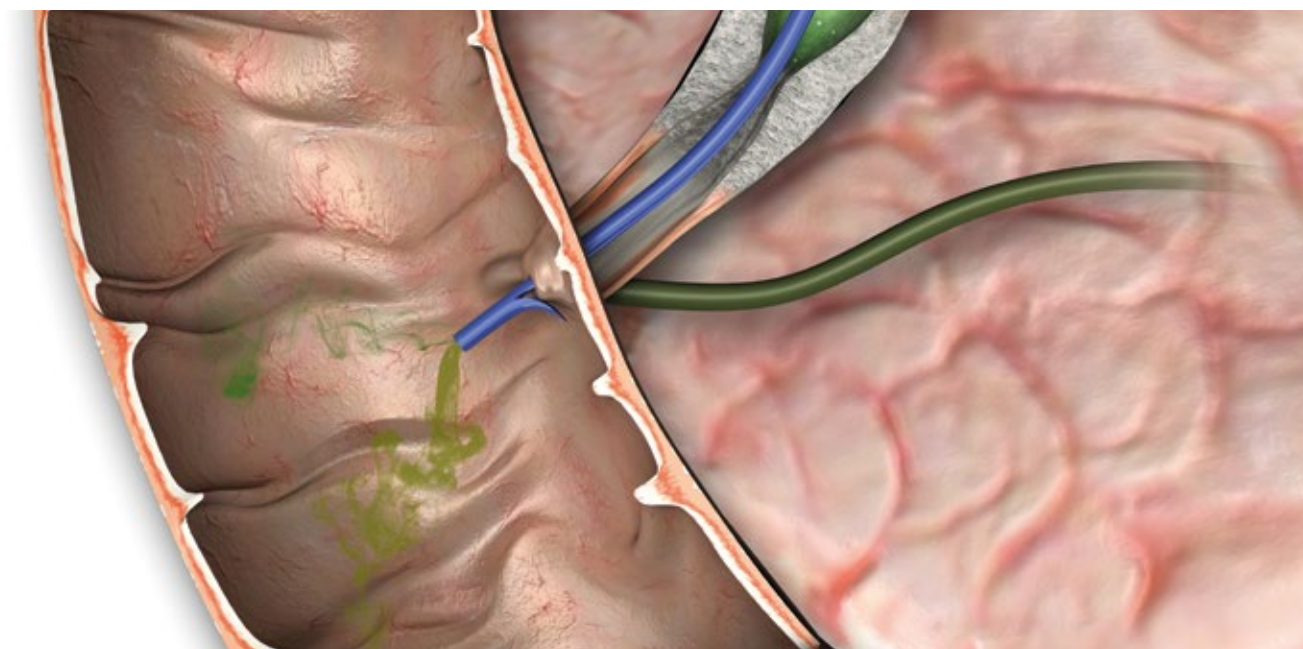
- Different shapes: straight, curved, angled, pigtail, double-pigtail
- Optimum flow rate
- Ideal adaptation to anatomy
- Safe hold, minimal migration
- Available single-packed or pre-loaded on introduction-system
- High x-ray visibility



Pre-loaded stent

System handle





## SPECIFICATIONS

### STENT STRAIGHT



- Shape: straight
- 2 flaps
- 2 side-holes
- X-ray visible
- Material: PE

Working length	Diameter bile duct prosthesis			
	7 Fr.	8.5 Fr.	10 Fr.	11.5 Fr.
5 cm	BPDS-31114-0705	BPDS-31114-0805	BPDS-31114-1005	BPDS-31114-1105
6 cm	BPDS-31114-0706	BPDS-31114-0806	BPDS-31114-1006	BPDS-31114-1106
7 cm	BPDS-31114-0707	BPDS-31114-0807	BPDS-31114-1007	BPDS-31114-1107
8 cm	BPDS-31114-0708	BPDS-31114-0808	BPDS-31114-1008	BPDS-31114-1108
9 cm	BPDS-31114-0709	BPDS-31114-0809	BPDS-31114-1009	BPDS-31114-1109
10 cm	BPDS-31114-0710	BPDS-31114-0810	BPDS-31114-1010	BPDS-31114-1110
11 cm	BPDS-31114-0711	BPDS-31114-0811	BPDS-31114-1011	BPDS-31114-1111
12 cm	BPDS-31114-0712	BPDS-31114-0812	BPDS-31114-1012	BPDS-31114-1112
13 cm	BPDS-31114-0713	BPDS-31114-0813	BPDS-31114-1013	BPDS-31114-1113
14 cm	BPDS-31114-0714	BPDS-31114-0814	BPDS-31114-1014	BPDS-31114-1114
15 cm	BPDS-31114-0715	BPDS-31114-0815	BPDS-31114-1015	BPDS-31114-1115

## INTRODUCER-SYSTEMS WITHOUT STENT

### SPECIFICATIONS



- One step introducer-system
- X-ray visible

New: Extended guide catheter

REF	Ø catheter	Guide catheter	Introducer length
BPDI-0740/22	7 Fr.	40 cm	220 cm
BPDI-0840/22	8.5 Fr.	40 cm	220 cm
BPDI-1040/22	10 Fr.	40 cm	220 cm
BPDI-1140/22	11.5 Fr.	40 cm	220 cm

## INTRODUCER-SYSTEMS WITH PRE-LOADED STENT



- One step introducer-system
- X-ray visible

### SPECIFICATIONS

#### STENT STRAIGHT



- Shape: straight
- 2 flaps
- 2 side-holes
- X-ray visible
- Material: PE

REF	Ø catheter	Stent working/ total length	Introducer length
BPDS-31114-0805/22	8.5 Fr.	5 / 7 cm	220 cm
BPDS-31114-0807/22	8.5 Fr.	7 / 9 cm	220 cm
BPDS-31114-0809/22	8.5 Fr.	9 / 11 cm	220 cm
BPDS-31114-0811/22	8.5 Fr.	11 / 13 cm	220 cm
BPDS-31114-1005/22	10 Fr.	5 / 7 cm	220 cm
BPDS-31114-1007/22	10 Fr.	7 / 9 cm	220 cm
BPDS-31114-1009/22	10 Fr.	9 / 11 cm	220 cm
BPDS-31114-1011/22	10 Fr.	11 / 13 cm	220 cm

### SPECIFICATIONS

#### STENT CURVED



- Shape: 15° curved
- 2 flaps
- 2 side-holes
- X-ray visible
- Material: PE

REF	Ø catheter	Stent working/ total length	Introducer length
BPDS-32114-0805/22	8.5 Fr.	5 / 7 cm	220 cm
BPDS-32114-0807/22	8.5 Fr.	7 / 9 cm	220 cm
BPDS-32114-0809/22	8.5 Fr.	9 / 11 cm	220 cm
BPDS-32114-0811/22	8.5 Fr.	11 / 13 cm	220 cm
BPDS-32114-1005/22	10 Fr.	5 / 7 cm	220 cm
BPDS-32114-1007/22	10 Fr.	7 / 9 cm	220 cm
BPDS-32114-1009/22	10 Fr.	9 / 11 cm	220 cm
BPDS-32114-1011/22	10 Fr.	11 / 13 cm	220 cm



# DILATION BALLOONS

## SIMPLY EXPAND RELIABLY AND EFFECTIVELY

The dilation balloons from MICRO-TECH stand for maximum quality. MICRO-TECH produces all the dilation balloons itself – using state-of-the-art European and American production technology. Two x-ray markings indicate the exact working length of the balloon, thereby ensuring its

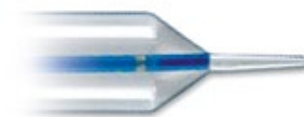
precise positioning. Under application of pressure, the balloon is rapidly filled to acquire its predefined expansion width. Furthermore, the high-pressure design ensures the balloon retains its shape over the entire working length, thereby allowing optimum dilation success.

### SPECIFIC CHARACTERISTICS

- Dimensionally stable high pressure design
- 2 X-ray markers on opposite ends to indicate the exact working length of the balloon
- Separate guide wire and insufflation lumens
- Conical shaped catheter tip
- Rapid expansion
- Constant dilation over the entire length
- Guide-wire compatible up to 0.035 inches



X-ray marking

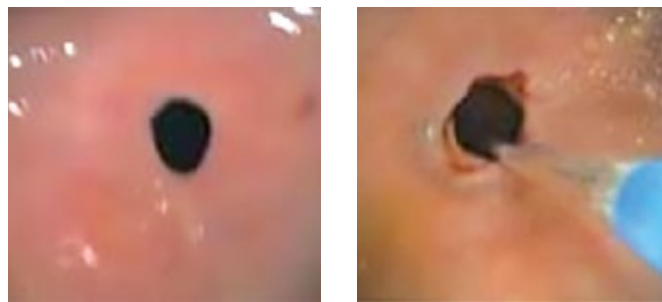


Conical tip



## SUCCESSFUL IN PRACTICAL USE

Stenoses are effectively dilated using the MICRO-TECH dilation balloons. The balloon dilates the stenosis safely and gently and prepares the area to be treated in an optimum manner. The uniform distribution of pressure over the entire working length of the balloon and the outstanding dimensional stability during dilation guarantee excellent therapeutic success over the entire length of the stenosis.



Endoscopic control during dilation therapy

## SPECIFICATIONS

REF	Balloon Ø mm	Balloon length mm	Catheter Ø Fr.	Catheter length mm	Channel Ø mm	Application
<b>ACHALASIE-BALLOONS</b>						
BDC-26/80-7/10	26	80	7	1000	–	Achalasie
BDC-30/80-7/10	30	80	7	1000	–	Achalasie
BDC-34/80-7/10	34	80	7	1000	–	Achalasie
<b>FIXED WIRE BALLOONS</b>						
FWB-06/80-6/18-M	6-7-8	80	6	1800	2.8	Oesophagus
FWB-08/80-6/18-M	8-9-10	80	6	1800	2.8	Oesophagus
FWB-10/80-6/18-M	10-11-12	80	6	1800	2.8	Oesophagus
FWB-12/80-6/18-M	12-13.5-15	80	6	1800	2.8	Oesophagus
FWB-15/80-6/18-M	15-16.5-18	80	6	1800	2.8	Oesophagus
FWB-18/80-6/18-M	18-19-20	80	6	1800	2.8	Oesophagus

Packaging unit: 1 piece / suitable for guide wires with 0.035"



# FOREIGN BODY FORCEPS

## QUALITY CRAFTED FOR HIGH PRECISION CONTROL

Due to the ergonomic 3-ring handle the one-time foreign body forceps can be used with ease and comfort. Each movement is passed exactly to the forceps – even in angled body regions. The calipers themselves are made

of high quality material and are perfectly manufactured. These qualities allow you to grab firmly, guaranteeing safe foreign body retrievals. The range includes forceps for gastroenterology, pneumology, paediatrics and urology.

### SPECIFIC CHARACTERISTICS

- High-quality processing
- Covering with markings
- Ergonomic 3-ring handle
- Easy and safe operation
- Different areas of application
- 3 types: Alligator, 2-1 teeth and Griffin
- Sterile and individually wrapped
- Type Griffin also for stent-extraction and -repositioning



Type Griffin: long alligator jaw with 2:1 teeth



Type: 2-1 teeth

## SPECIFICATIONS

REF	Type	Length mm	Ø mm
<b>DISPOSABLE FOREIGN BODY FORCEPS - GASTROENTEROLOGY</b>			
NGF03-11023230	2-1 teeth	2300	2.3
NGF13-11023230	Alligator	2300	2.3
NGF33-11023230	Griffin	2300	2.3
<b>DISPOSABLE FOREIGN BODY FORCEPS - PNEUMOLOGY, PAEDIATRICS, UROLOGY</b>			
NGF32-11018180	Griffin	1800	1.8
NGF32-11018120	Griffin	1200	1.8

Packaging unit: 10 pieces

Type Griffin is ideal and our recommendation for stent-extraction and -repositioning.



# DISPOSABLE BIOPSY FORCEPS

## WHERE TECHNOLOGY AND RELIABILITY MEET

The biopsy forceps are extraordinarily sharp, which guarantees safe and effortless removal of significant tissue specimens. The CamDesign of our TechBite™ requires only very gentle contact pressure for a very good biopsy. The shortened distal end goes easy on the working

channel, even in angled positions. This is always guaranteed by the fully-mechanized production system used to manufacture TechBite™. With its classic shear joints, the TruBite combines easy handling with reliable quality.

### SPECIFIC CHARACTERISTICS

- Significant biopsies
- A design that goes easy on the working channel
- Short distal end: 9 mm (TechBite™), 11.5 mm (TruBite)
- Wide product range



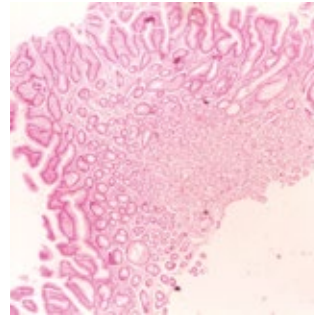
Cam-Design (Fig. TechBite™)



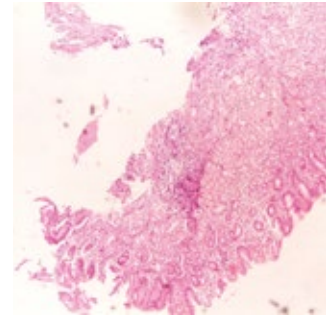
Scissors joint (Fig. TruBite)

### CONVINCING IN PRACTICAL USE

All of our forceps are equipped with a polyethylene coating. The labels can be consulted at any time for information regarding the withdrawal of the biopsy forceps.



Biopsate removed with a toothed cutting edge



Biopsate removed with a smooth cutting edge



### HANDLE AVAILABLE AS 1-RING VERSION

All forceps are equipped with the 1-ring handle. This allows you to use a one-hand grip method.

### JAW SECTIONS FOR EVERY INTERVENTION

Whether for biopsies or for removal of small polyps – the disposable biopsy forceps are perfectly equipped for any task with different jaw sections: with a smooth or a toothed cutting edge, with or without a spike.



### HIGH QUALITY COATING

The coating protects the working channel against scratching and provides a frictionless feed motion. The colored marking shows the removal of the forceps from the working channel in order to prevent damage to the mucous membrane. The forceps have been given different colors so they can be quickly allocated in accordance with working length:

Blue: 2300 mm or 2600 mm

Orange: 1800 mm

Yellow: Pediatric 1800 mm or 2600 mm



## SELECTION OF MORE THAN 30 BIOPSY FORCEPS

The broad range includes forceps of various sizes, and with differing features. An extract from the portfolio can be found below, while page 35 offers a complete overview.

### TECHBITE™



Jaw Ø 2.3 mm,  
180 cm length



Jaw Ø 2.3 mm,  
230 cm length

### TRUBITE



Jaw Ø 2.3 mm,  
180 cm length



Jaw Ø 2.3 mm,  
230 cm length

## SPECIAL FORCEPS

### TECHBITE™ PAEDIATRICS



Jaw Ø 1.8 mm,  
180 cm length

### MACRO



Jaw Ø 3.0 mm,  
230 cm length

### TRUBITE PAEDIATRICS



Jaw Ø 1.8 mm,  
180 cm length

### LARGE CAPACITY



Jaw Ø 2.4 mm,  
180 cm length



Jaw Ø 2.4 mm,  
180 cm length

## SPECIFICATIONS

REF	Working channel Ø mm	Length mm	Opening width mm	Jaw Ø mm	Spike	Covering	Jaw	Grip
<b>TECHBITE™</b>								
EBF33-11023180	2.8	1800	6.7	2.3	No	Orange	Smooth	1-ring
EBF33-11023230	2.8	2300	6.7	2.3	No	Blue	Smooth	1-ring
EBF33-11123180	2.8	1800	6.7	2.3	Yes	Orange	Smooth	1-ring
EBF33-11123230	2.8	2300	6.7	2.3	Yes	Blue	Smooth	1-ring
EBF43-11023180	2.8	1800	6.7	2.3	No	Orange	Serrated	1-ring
EBF43-11023230	2.8	2300	6.7	2.3	No	Blue	Serrated	1-ring
EBF43-11123180	2.8	1800	6.7	2.3	Yes	Orange	Serrated	1-ring
EBF43-11123230	2.8	2300	6.7	2.3	Yes	Blue	Serrated	1-ring
<b>TRUBITE</b>								
EBF53-11023180	2.8	1800	6.7	2.3	No	Orange	Smooth	1-ring
EBF53-11023230	2.8	2300	6.7	2.3	No	Blue	Smooth	1-ring
EBF53-11123180	2.8	1800	6.7	2.3	Yes	Orange	Smooth	1-ring
EBF53-11123230	2.8	2300	6.7	2.3	Yes	Blue	Smooth	1-ring
EBF63-11023180	2.8	1800	6.7	2.3	No	Orange	Serrated	1-ring
EBF63-11023230	2.8	2300	6.7	2.3	No	Blue	Serrated	1-ring
EBF63-11123180	2.8	1800	6.7	2.3	Yes	Orange	Serrated	1-ring
EBF63-11123230	2.8	2300	6.7	2.3	Yes	Blue	Serrated	1-ring
<b>SPECIAL FORCEPS</b>								
<b>TECHBITE™ – PAEDIATRICS</b>								
EBF33-11018180	2.0	1800	4.5	1.8	No	Yellow	Smooth	1-ring
EBF43-11018180	2.0	1800	4.5	1.8	No	Yellow	Serrated	1-ring
EBF43-11118180	2.0	1800	4.5	1.8	Yes	Yellow	Serrated	1-ring
<b>TRUBITE – PAEDIATRICS</b>								
EBF53-11018180	2.0	1800	4.5	1.8	No	Yellow	Smooth	1-ring
EBF53-11118180	2.0	1800	4.5	1.8	Yes	Yellow	Smooth	1-ring
EBF13-11018180	2.0	1800	4.5	1.8	No	Yellow	Serrated	1-ring
EBF13-11118180	2.0	1800	4.5	1.8	Yes	Yellow	Serrated	1-ring
<b>TRUBITE – ENTEROSCOPY</b>								
EBF03-11018260	2.0	2600	4.5	1.8	No	Yellow	Smooth	1-ring
EBF03-11023260	2.8	2600	6.7	2.3	No	Blue	Smooth	1-ring
<b>TRUBITE – MACRO</b>								
EBF03-01030230	3.2	2300	8.5	3.0	No	Blue	Smooth	1-ring
EBF03-01130230	3.2	2300	8.5	3.0	Yes	Blue	Smooth	1-ring
EBF13-01030230	3.2	2300	8.5	3.0	No	Blue	Serrated	1-ring
EBF13-01130230	3.2	2300	8.5	3.0	Yes	Blue	Serrated	1-ring
<b>LARGE CAPACITY</b>								
LCEBF63-10024180	2.8	1800	9.0	2.4	No	Orange	Serrated	1-ring
LCEBF63-10024230	2.8	2300	9.0	2.4	No	Blue	Serrated	1-ring
LCEBF63-10124180	2.8	1800	9.0	2.4	Yes	Orange	Serrated	1-ring
LCEBF63-10124230	2.8	2300	9.0	2.4	Yes	Blue	Serrated	1-ring

Packaging unit: 10 pieces



# GOLDKNIFE

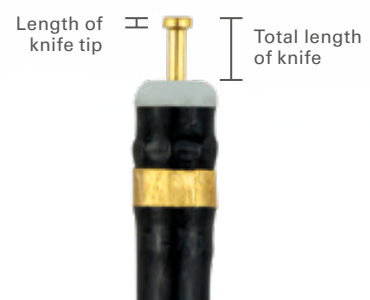
## ELECTROSURGICAL PRECISION WITHOUT CHANGING INSTRUMENTS

The GOLDKNIFE from MICRO-TECH allows for effective and reliable endoscopic submucosal dissections. Thanks to the combination of water-jet and electro-surgery, all working steps - marking (with the exception of the IT type), injection, dissection and coagulation - can be performed without switching instruments. The high-pressure water jet combined with electro-surgery creates a submucosal

pillow of water that allows replenishment at any time to protect against thermal and mechanical injuries. The handle facilitates a smooth and seamless extension of the knife. The balanced rigidity of the tube also enables precise knife guidance. Choose from four different knife tips with different cutting and coagulation properties.

### SPECIFIC CHARACTERISTICS

- Water jet combined with electro-surgery
- Independent marking (with the exception of the IT type), injection, dissection and coagulation without switching instruments
- Replenishing the water pillow (optional) while dissecting and resecting
- 4 different knife types





Type I: Great freedom of movement, versatile, higher level of difficulty



Type T: Ideal for removing under tension. Better coagulation options and optimized cutting direction while dissecting



Type O: Crescent-shaped tip maximizes coagulation effect



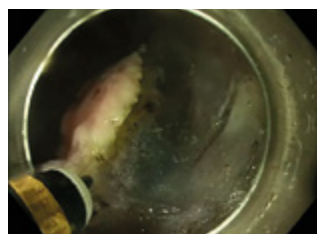
Type IT: The 1.6 mm insulated ceramic tip minimizes the risk of perforation and thus enables safe dissection



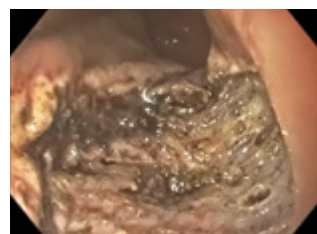
Marking



Injection water cushion



Dissection



Findings after removal

## SPECIFICATIONS

REF	Shape of the knife tip	Total length of knife / Length of knife tip mm	Working length mm	Working channel Ø mm
<b>GOLDKNIFE-I-TYP</b>				
MK-I-1-165	I	1.5	1650	2.8
MK-I-1-235	I	1.5	2350	2.8
MK-I-2-165	I	2	1650	2.8
MK-I-2-235	I	2	2350	2.8
MK-I-4-165	I	4	1650	2.8
MK-I-4-235	I	4	2350	2.8
<b>GOLDKNIFE-O-TYP</b>				
MK-O-1-165	O	1.5 / 0.35	1650	2.8
MK-O-1-235	O	1.5 / 0.35	2350	2.8
MK-O-2-165	O	2 / 0.35	1650	2.8
MK-O-2-235	O	2 / 0.35	2350	2.8
MK-O-4-165	O	4 / 0.35	1650	2.8
MK-O-4-235	O	4 / 0.35	2350	2.8
<b>GOLDKNIFE-T-TYP</b>				
MK-T-1-165	T	1.5 / 0.35	1650	2.8
MK-T-1-235	T	1.5 / 0.35	2350	2.8
MK-T-2-165	T	2 / 0.35	1650	2.8
MK-T-2-235	T	2 / 0.35	2350	2.8
MK-T-4-165	T	4 / 0.35	1650	2.8
MK-T-4-235	T	4 / 0.35	2350	2.8
<b>GOLDKNIFE-IT-TYP</b>				
MK-IT-4-235	IT	5.6	2350	2.8

Packaging unit: 1 piece



# ENSURE

## FORCEPS FOR SAFE COAGULATION

MICRO-TECH ENSURE Coagulation Forceps are designed to assist physicians in effectively coagulating bleeding sites during interventional endoscopic procedures. They allow the user to securely grasp vessels and cut or coagulate them using HF power connection. Bleeding vessels can be reliably staunched during and after endoscopic submucosal dissection, without harming the surrounding tissue. This is ensured by the

well-grooved jaws of the forceps. They ensure a secure grip and prevent slippage during coagulation. Thanks to the maximum opening width of up to 6.3 mm, even large lesions can be coagulated. Precise and comfortable operation is ensured by the ergonomic handle, which enables reliable rotation of the forceps. In addition, the bidirectional HF power connection ensures more comfortable handling during the procedure.

### SPECIFIC CHARACTERISTICS

- For effective hemostasis during ESD and EMR
- Secure, non-slip hold
- Reliable rotation
- 360° bidirectional rotation of the HF power connection
- Opening width 6.3



Ergonomic 3-ring handle with soft grip and 360° HF power connection



## SPECIFICATIONS

REF	Opening width mm	Length mm	Branch	Exterior diameter of distal tips mm	Working channel Ø mm
<b>TYPE B</b>					
CF165-B	6.3	1650	grooved	≤ 2.7	≥ 2.8
CF230-B	6.3	2300	grooved	≤ 2.7	≥ 2.8

Packaging unit: 10 pieces



# PROTRAP LUMA

## FOR GREATER CLARITY DURING POLYP REMOVAL

With MICRO-TECH's inline polyp trap, removing polyps larger than 1 mm is particularly safe and easy. The unique design enables non-contact sampling and is gentle on the polyp. The extracted polyp is collected in the sample

tray and can be viewed in detail through the built-in magnification window. To collect several samples, the sample tray can be quickly and easily exchanged, with no loss of suction power.

### SPECIFIC CHARACTERISTICS

- Removable drip tray
- Magnification window
- Ergonomic design
- Easy to use
- Tightly sealed for safe suction
- Light stick for better polyp visibility



ProTrap Luma consists of a tube, trap body, collection sieve and light stick



The trays capture the polyps, are easily replaceable and fit into a standard sample cup

## SPECIFICATIONS

REF	Description	Packaging unit
<b>PROTRAP LUMA</b>		
BBPA00001	ProTrap Luma In-Line Polyp Trap	25 pcs/box
BBPA10001	ProTrap Luma Specimen Tray	50 pcs/box



# NETS

## SAFELY REMOVE FOREIGN BODIES AND POLYPS

The MT net has been developed for the removal of polyps and foreign bodies and enables the reliable recovery of tissue samples. The net itself consists of a reinforced thread

material, which offers additional safety during recovery. Thanks to its unique dimensional stability and large opening, it facilitates work over several passes

### SPECIFIC CHARACTERISTICS

- Large net
- High quality manufacture
- Comfortable 3-ring handle
- Easy and precise opening



Shape stable MT net

## SPECIFICATIONS

REF	Ø net mm	Snare	Working length mm	Ø working channel mm
<b>RETRIEVAL NET</b>				
NT-E-30/23-P	30	Oval	2300	2.8
NT-E-30/16-P	30	Oval	1600	2.8

Packaging unit: 10 pieces





# DISPOSABLE CLEANING BRUSHES

## FOR RELIABLE CLEANING

The disposable cleaning brushes from MICRO-TECH ensure a perfectly cleaned endoscope, thus reducing the risk of cross-contamination to a minimum. The brushes also protect your endoscope. Spherical beads on the brush ends prevent the endoscope's working channel

from being damaged during cleaning. If you wish to make your work even safer, more rapid and more efficient, the disposable double cleaning brushes with 2 heads are recommended. Two cleaning processes can therefore be performed simultaneously in a single working step.

### SPECIFIC CHARACTERISTICS

- 2 brush heads for time-saving cleaning
- Protective beads on the brush heads
- Brushes made of resistant nylon
- Individually hygienically packed



Handle



Nylon brushes

### CONICAL BRUSH HEADS

The product range has also been supplemented with disposable cleaning brushes with tapered brush heads. According to preference, brushes with constant and decreasing brush diameters are available. Conical brush heads are indicated by a T in the product number.



### YOUR CHOICE: 1 OR 2 BRUSH HEADS

An ergonomic ring handle on the single head brush supports easy removal of the cleaning brush from the endoscope channel. Alternatively the use of a double headed cleaning brush can be recommended - a catheter with a brush at each end that is pulled through the channel thus allowing greater cleaning efficiency with its double brush action.



### PRECISELY FITTING DIAMETER

Whether a bronchoscope or a therapeutic endoscope with a large working channel is involved – you can obtain ideal cleaning brushes for all endoscopes with diameters ranging from 3 mm to 11 mm.



## SPECIFICATIONS

REF	Catheter Ø mm	Total length mm	Brushes Ø mm	Brush length mm
<b>CLEANING BRUSHES WITH ONE HEAD</b>				
CB18-0050/18	1.8	1800	5	20
CB18-0050/23	1.8	2300	5	20
<b>CLEANING BRUSHES WITH TWO HEADS</b>				
CB18-3030/18	1.8	1800	3/3	20/20
CB18-5050/18	1.8	1800	5/6	20/20
CB18-5050/23	1.8	2300	5/5	20/20
CB18-T5050/23	1.8	2300	5-7/5-7 tapered	20/20
CB23-5050/23	2.3	2300	5/5	20/20
DCBS-08-10-15-180	0.8	1800	1.5/1.5	10/10

Packaging unit: 100 pieces  
Catheter colours of the brushes may vary.

## SPECIFICATIONS

REF	Description	Length mm	Ø outside mm	Ø inside mm
<b>PROCTOSCOPE</b>				
RA1480	Size S for paediatrics, color: white	80	14	12
RA2295	Size M, color: yellow	95	22	20
RA2695	Size L, color: red	95	26	24
RA0001	Adapter for cold-light-source			

Packaging unit: Proctoscopes: 100 pieces / Cold-light-adapter: 1 piece

REF	Compatible endoscope distal end Ø mm	
<b>EMBRELLA</b>		
EM-S-01	12.8-14.5	Packaging unit: 10 pieces
EM-S-02	11.5-13	Packaging unit: 10 pieces

REF	Description	Measurements
<b>MOUTHGUARD</b>		
AC01-102.M	Disposable mouthguard, yellow, NO strap	Medium (M)
AC01-103.A	Disposable mouthguard, atraumatic design, blue, latex free textile strap	Atraumatic (A)
AC01-103.M	Disposable mouthguard, blue, textile strap	Medium (M)
AC01-103.P	Disposable pediatric mouthguard, latex free textile strap	Pediatric (P)
AC01-150	Disposable textile strap, blue (also available separately)	Medium (M)

<b>COLOSHORTS</b>		
TX01-101.UZ	Disposable colonoscopy examination trousers, dark blue, material PP	Dimensions: 130 x 65 cm, universal size, Packaging unit: 100 pieces

<b>INSTRUMENT CLOTH</b>		
TX03-101.M4	Light blue, 4 pockets (l x w: 20 x 25 cm each)	90 x 70 cm

<b>BIOPSY VALVES</b>		
AC03-102.O	Blue, for Olympus and Fujifilm endoscopes (G5 and higher)	
AC03-101.P	Red, for Pentax endoscopes	
AS2450000	Disposable biopsy valve with flush connection, suitable for Olympus and Fujifilm endoscopes	
AS2460000	Disposable biopsy valve with flush connection, suitable for Pentax endoscopes	

<b>POLYP TRAP</b>		
BBP-50	Polyp trap with 4-chamber	

<b>PROTRAP LUMA™</b>		
BBPA00001	ProTrap Luma™ In-Line Polyp Trap	Packaging unit: 25 pcs/box
BBPA10001	ProTrap Luma™ Specimen Tray	Packaging unit: 50 pcs/box



Certificate CN13/20559



The management system of

# Micro-Tech (Nanjing) Co., Ltd.

No. 10 Gaoke Third Road, Nanjing National Hi-Tech, Industrial Development Zone, Nanjing, 210032, Jiangsu Province, P.R. China

has been assessed and certified as meeting the requirements of

**ISO 13485:2016**

**EN ISO 13485:2016**

For the following activities

**The Scope of Registration appears on page 2 of this certificate**

This certificate is valid from 27 September 2022 until 26 September 2025 and remains valid subject to satisfactory surveillance audits.

Issue 13. Certified since 26 September 2013

Certified activities performed by additional sites are listed on subsequent pages.

Authorised by  
Jonathan Hall  
Global Head - Certification Services

SGS United Kingdom Ltd  
Rossmore Business Park, Ellesmere Port, Cheshire, CH65 3EN, UK  
t +44 (0)151 350-6666 - www.sgs.com



This document is an authentic electronic certificate for Client' business purposes use only. Printed version of the electronic certificate are permitted and will be considered as a copy. This document is issued by the Company subject to SGS General Conditions of certification services available on [Terms and Conditions](#) | SGS. Attention is drawn to the limitation of liability, indemnification and jurisdictional clauses contained therein. This document is copyright protected and any unauthorized alteration, forgery or falsification of the content or appearance of this document is unlawful.



# Micro-Tech (Nanjing) Co., Ltd.

**ISO 13485:2016**

**EN ISO 13485:2016**

Design and Manufacture of Sterile Cytology Brush, Dilation Balloon (Disposable Dilation Balloon, Disposable Multistage Dilation Balloon Catheter), Disposable Hot Biopsy Forceps, Injection Needle, Non-Vascular Stent, Snare, Spray Catheter, Stone Extraction Basket, Single-Use Cleaning Brush, Single Use Bite Block, Endoscopy Working Channel Valves, Polyp Collection Kit, Cold Snare (used for clinical endoscopic procedure), Hydro Slide Guidewire (used for clinical endoscopic procedure), Biliary Drainage Catheter and Introducer Systems, Biliary Stone Retrieval Balloon Catheter, Repositionable Hemostasis Clipping Device, Pancreatic Pseudocyst Stent with Delivery System, Sphincterotome, Fixed Wire Balloon (ABC Dilatation Balloon Catheter, Rapide™ Multistage Dilatation Balloon Catheter), Sterile Biliary Nitinol Stent Set, short-wire compatible.  
Provision of Sterilization Service for Medical Devices using Ethylene Oxide Gas in accordance with EN ISO 11135:2014.



This document is an authentic electronic certificate for Client' business purposes use only. Printed version of the electronic certificate are permitted and will be considered as a copy. This document is issued by the Company subject to SGS General Conditions of certification services available on [Terms and Conditions](#) | SGS. Attention is drawn to the limitation of liability, indemnification and jurisdictional clauses contained therein. This document is copyright protected and any unauthorized alteration, forgery or falsification of the content or appearance of this document is unlawful.





Certificate CN13/20559, continued

# Micro-Tech (Nanjing) Co., Ltd.



**ISO 13485:2016**  
**EN ISO 13485:2016**

Issue 13
<b>Sites</b>
Micro-Tech (Nanjing) Co., Ltd. No. 10 Gaoke Third Road, Nanjing National Hi-Tech, Industrial Development Zone, Nanjing, 210032, Jiangsu Province, P.R. China
Micro-Tech (Nanjing) Co., Ltd. No. 199. Medicine Valley Avenue, Nanjing National Hi-Tech, Industrial Development Zone, Nanjing 210032, Jiangsu Province, P.R.China



This document is an authentic electronic certificate for Client' business purposes use only. Printed version of the electronic certificate are permitted and will be considered as a copy. This document is issued by the Company subject to SGS General Conditions of certification services available on [Terms and Conditions](#) | SGS. Attention is drawn to the limitation of liability, indemnification and jurisdictional clauses contained therein. This document is copyright protected and any unauthorized alteration, forgery or falsification of the content or appearance of this document is unlawful.



EC Certificate Full Quality Assurance System: Certificate CN19/41071

The management system of

# Micro-Tech (Nanjing) Co., Ltd.

No. 10 Gaoke Third Road, Nanjing National Hi-Tech, Industrial Development Zone,  
Nanjing, 210032, Jiangsu Province, P.R. China

has been assessed and certified as meeting the requirements of

## Directive 93/42/EEC on medical devices, Annex II (excluding Section 4)

For the following products

**The scope of registration appears on page 2 of this certificate.**

This certificate is valid from 16 December 2019 until 24 May 2024  
and remains valid subject to satisfactory surveillance audits.  
Issue 1. Certified since 26 September 2013  
and first certified by SGS Belgium NV since 16 December 2019

Certification is based on reports numbered CN/SZH 8403MDD

This is a multi-site certification.  
Additional site details are listed on subsequent pages

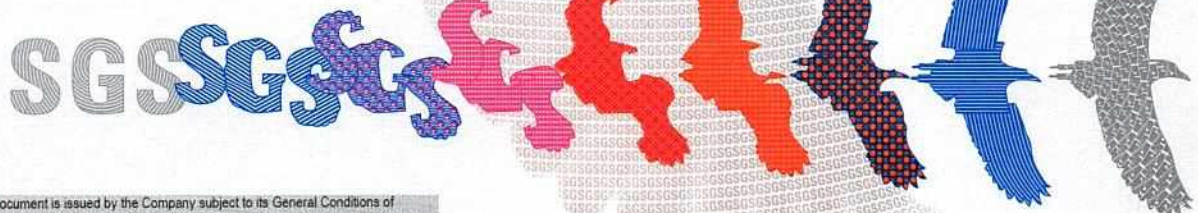
Authorised by

**SGS Belgium NV, Notified Body 1639**

SGS House Noordertaan 87 2030 Antwerp Belgium  
t +32 (0)3 545-48-48 f +32 (0)3 545-48-49 [www.sgs.com](http://www.sgs.com)

LPMD5007 - Certificate CE1639 Annex II-4, EN rev. 02

Page 1 of 2





# Micro-Tech (Nanjing) Co., Ltd.

## Directive 93/42/EEC

on medical devices, Annex II (excluding section 4)

Issue 1

Detailed scope

**Sterile Non Vascular Stent (Biliary Stent, Esophageal Stent, Intestinal Stent, Tracheal Stent)**  
**Sterile medical devices used for clinical endoscopic procedure including Sterile Dilation Balloon (Disposable Dilation Balloon , Disposable Multistage Dilation Balloon Catheter), Sterile Disposable Hot Biopsy Forceps, Sterile Injection Needle, Sterile Nasal Biliary Drainage Set, Sterile Hot Snare Sterile Stone Extraction Basket, Sterile Cold Snare, Non Vascular sterile Hydro Slide Guidewire, Sterile Biliary Drainage Catheter, Biliary Drainage Catheter Introducer System, Biliary Drainage Catheter with Introducer System, Sterile Biliary Stone Retrieval Balloon Catheter, Sterile Repositionable Hemostasis Clipping Device to be intended for short term use Sterile Pancreatic Pseudocyst Stent with Delivery System to be intended for short term use in the body within 30 days, Sterile Sphincterotome, Non sterile OXY CO<sub>2</sub> Bite Block used to protect the endoscope insertion tube and oesophageal dilators from being bitten by the patient. Sterile Biliary Nitinol Stent Set, short-wire compatible**  
**Class I (Sterility aspects only Restricted to the aspects of manufacture concerned with securing and maintaining sterile condition): Sterile Spray Catheter—used for lavage, spraying of a medical solution or contrast medium, Sterile Cytology Brush, Sterile Fixed Wire Balloon (ABC Dilatation Balloon Catheter, Rapide™ Multistage Dilatation Balloon Catheter) use in adult and adolescent populations to endoscopically dilate strictures of the esophagus for transient use**

Where the above scope includes class III medical device(s), a valid EC Design Examination Certificate according to Annex II (Section 4) is a mandatory requirement for each device in addition to this certificate to place that device on the market

Additional facilities

**No. 199 Medicine Valley Avenue, Nanjing National Hi-Tech, Industrial Development Zone, Nanjing, Jiangsu Province, 210032, P.R.China**



EC Certificate Full Quality Assurance System: CN13/20558

The management system of

# Micro-Tech (Nanjing) Co., Ltd.

No. 10 Gaoke Third Road, Nanjing National Hi-Tech, Industrial Development Zone,  
Nanjing, 210032, Jiangsu Province, P.R. China

has been assessed and certified as meeting the requirements of

## Directive 93/42/EEC on medical devices, Annex II (excluding Section 4)

For the following products

**The scope of registration appears on page 2 of this certificate.**

This certificate is valid from 26 September 2019 until 24 May 2024  
and remains valid subject to satisfactory surveillance audits.  
Re certification audit due before 04 September 2022  
Issue 12. Certified since 26 September 2013

Certification is based on reports numbered CN/SZH 8403MDD

This is a multi-site certification.  
Additional site details are listed on the subsequent page.

Authorised by

SGS United Kingdom Ltd, Notified Body 0120

202B Worle Parkway, Weston-super-Mare, BS22 6WA UK  
t +44 (0)1934 522917 f +44 (0)1934 522137 www.sgs.com

SGS CE 02 0315 M2

Page 1 of 2





## Micro-Tech (Nanjing) Co., Ltd.

### Directive 93/42/EEC

on medical devices, Annex II (excluding section 4)

Issue 12

Detailed scope

**Sterile Non Vascular Stent (Biliary Stent, Esophageal Stent, Intestinal Stent, Tracheal Stent)**  
**Sterile medical devices used for clinical endoscopic procedure including Sterile Dilation Balloon (Disposable Dilation Balloon , Disposable Multistage Dilation Balloon Catheter), Sterile Disposable Hot Biopsy Forceps, Sterile Injection Needle, Sterile Nasal Biliary Drainage Set, Sterile Hot Snare Sterile Stone Extraction Basket, Sterile Cold Snare, Non Vascular sterile Hydro Slide Guidewire, Sterile Biliary Drainage Catheter, Biliary Drainage Catheter Introducer System, Biliary Drainage Catheter with Introducer System, Sterile Biliary Stone Retrieval Balloon Catheter, Sterile Repositionable Hemostasis Clipping Device to be intended for short term use Sterile Pancreatic Pseudocyst Stent with Delivery System to be intended for short term use in the body within 30 days, Sterile Sphincterotome, Non sterile OXY CO<sub>2</sub> Bite Block used to protect the endoscope insertion tube and oesophageal dilators from being bitten by the patient. Sterile Biliary Nitinol Stent Set, short-wire compatible Class I (Sterility aspects only Restricted to the aspects of manufacture concerned with securing and maintaining sterile condition): Sterile Spray Catheter—used for lavage, spraying of a medical solution or contrast medium, Sterile Cytology Brush, Sterile Fixed Wire Balloon (ABC Dilatation Balloon Catheter, Rapide™ Multistage Dilatation Balloon Catheter) use in adult and adolescent populations to endoscopically dilate strictures of the esophagus for transient use**

Where the above scope includes class III medical device(s), a valid EC Design Examination Certificate according to Annex II (Section 4) is a mandatory requirement for each device in addition to this certificate to place that device on the market

Additional facilities

**No. 199 Medicine Valley Avenue, Nanjing National Hi-Tech, Industrial Development Zone, Nanjing, Jiangsu Province, 210032, P.R. China**