

OPHTHALMIC DIAGNOSTIC STRIPS

In Medical Grade Tyvek Pouches

Schirmer Strips

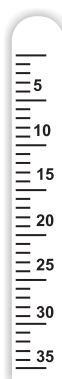
CE
2460



Sterile Ophthalmic strips for Dry Eye test

Packaging:

Each box contains 100 sterile strips.



Indications:

- Used for measurement of tear production
- Gauged for easy reading

Fluorescein Sodium Ophthalmic Strips

CE
2460

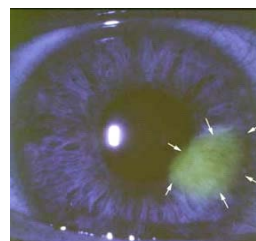


Composition (per strip):

Each strip is impregnated with 1.0 mg of Fluorescein Sodium

Packaging:

Each box contains 100 sterile strips.



Indications:

- For Applanation Tonometry
- For evaluating Contact Lens fitting

High Molecular Fluorescein Sodium Ophthalmic Strips

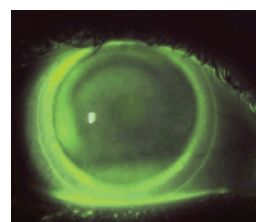


Composition (per strip):

Each strip is impregnated with 0.5 mg of high molecular Fluorescein Sodium

Packaging:

Each box contains 100 sterile strips.



Indications:

- For Applanation Tonometry
- For evaluating Contact Lens fitting

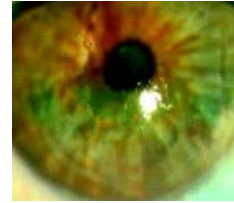
Lissamine Green Ophthalmic Strips

**Composition (per strip):**

Each strip is impregnated with 1.5 mg of Lissamine Green

Packaging:

Each box contains 100 sterile strips.

**Indications:**

- To stain preferentially damaged or devitalized cells
- To indicate any dry patches, as well as any mucus-deficient or damaged Corneal Epithelial cells
- It does not stain healthy, proliferating Ocular surface cells and has minimal effect on cell viability

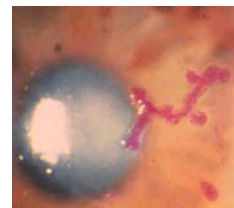
Rose Bengal Ophthalmic Strips

**Composition (per strip):**

Each strip is impregnated with 1.5 mg of Rose Bengal

Packaging:

Each box contains 100 sterile strips.

**Indication:**

- It stains dead or degenerated Epithelial cells of Cornea & Conjunctiva.



BIOTECH VISION CARE PVT LTD | Block 1, Abhishree Corporate Park, Opp. Swagat Bunglow BRTS Stop
Bopal - Ambli Road, Ahmedabad - 380 058 Gujarat India. | Tel: +91 79 66823000

Email: indiasales@biotechhealthcare.com | intlsales@biotechhealthcare.com | www.biotechhealthcare.com