

Get both ease and precision with CONVEY™ Guide Catheter,

featuring a highly radiopaque distal tip, unique hydrophilic coating, outstanding torque control, and excellent shape retention.

CONVEY Guide Catheter offers smooth and certain delivery with less friction and greater staying power, making it the natural choice whether you take the femoral or radial route.

Radial access reduces access-site bleeding and allows early patient mobilization.¹

CONVEY™ Guide Catheters 5F and 6F sizes support the benefits of radial procedures with a hydrophilic coating that lowers friction for smooth device entry and delivery.

Left Femoral Approach Curves
Amplatz Left (AL)
CLS™ (Contralateral Left Support)
Femoral Curve Left (FCL)
Femoral Left (FL)
Judkins Left (JL)

Radial/Brachial Approach Curves
KIMNY™
Left Back-Up (Left BU)
Radial Back-Up (RB)
Radial Back-Up Left (RBL)
Radial Back-Up Right (RBR)
Radial
TIG

Right Femoral Approach Curves
ALLRIGHT™ (ART)
Amplatz Right (AR)
Femoral Right (FR)
Hockey Stick (HS)
Judkins Right (JR)
Multipurpose A (MPA)
Right Coronary Shepherd's Crook (RC SC)

Additional Curves
Internal Mammary (IM)
Left Coronary Bypass (LCB)
Right Coronary Bypass (RCB)

Product	Inner Diameter	Outer Diameter
5F CONVEY™ Guide Catheter	1.47 mm (0.058")	1.76 mm (0.069")
6F CONVEY™ Guide Catheter	1.80 mm (0.071")	2.08 mm (0.082")
7F CONVEY™ Guide Catheter	2.08 mm (0.082")	2.37 mm (0.094")
8F CONVEY™ Guide Catheter	2.31 mm (0.091")	2.68 mm (0.106")

For a complete list of products, please contact your Boston Scientific representative.



www.bostonscientific.eu

© 2017 Boston Scientific Corporation or its affiliates. All rights reserved. DINCAR2706EA

All cited trademarks are the property of their respective owners. CAUTION: The law restricts these devices to sale by or on the order of a physician. Indications, contraindications, warnings and instructions for use can be found in the product labeling supplied with each device. Information for the use only in countries with applicable health authority product registrations. Information contained herein is for use or distribution outside the US, France, and Japan only.

IC-210411-AC-EU DEC2016 Printed in Germany by medicalvision.



CONVEY™ Guide Catheter



GLIDE with unique hydrophilic coating
ENGAGE with control and precision
SUPPORT with a robust shape portfolio
MANEUVER with highly radiopaque tip visibility

5-8F

1. Ferrante G, Rao SV, Jüni P, et al. Radial versus femoral access for coronary interventions across the entire spectrum of patients with coronary artery disease. JACC Cardiovasc Interv. 2016;9(14):1435-1437.

CONVEY™

Guide catheters provide controlled deliverability and critical back-up support.

Glide

Unique hydrophilic coating



Enables smooth catheter introduction



Lowers friction during catheter advancement



Higher lubricity designed to reduce vessel spasm

Coating applied only where needed

- Uncoated 7 cm distal segment provides meaningful feedback to help prevent unintentional deep intubation
- Uncoated proximal 25 cm segment provides controlled manipulation

Engage

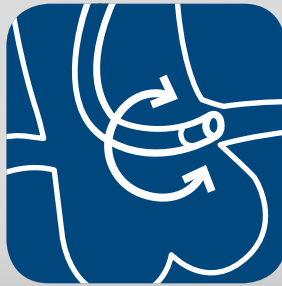
Exceptional control and precision



Precise torque response enhances maneuverability and engagement



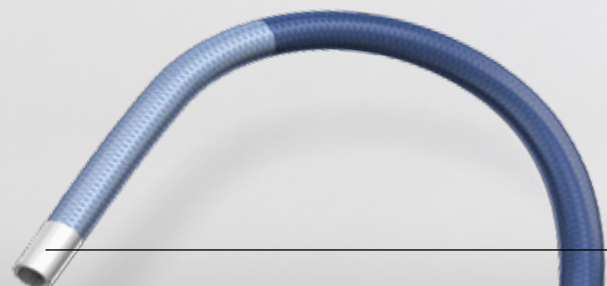
High strength braiding provides excellent kink resistance and pushability



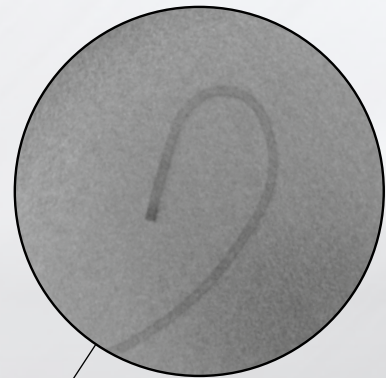
Low friction enables precise torque control of the tip

Maneuver

Highly radiopaque tip visibility



Highly radiopaque distal tip



Support

Exceptional back-up support



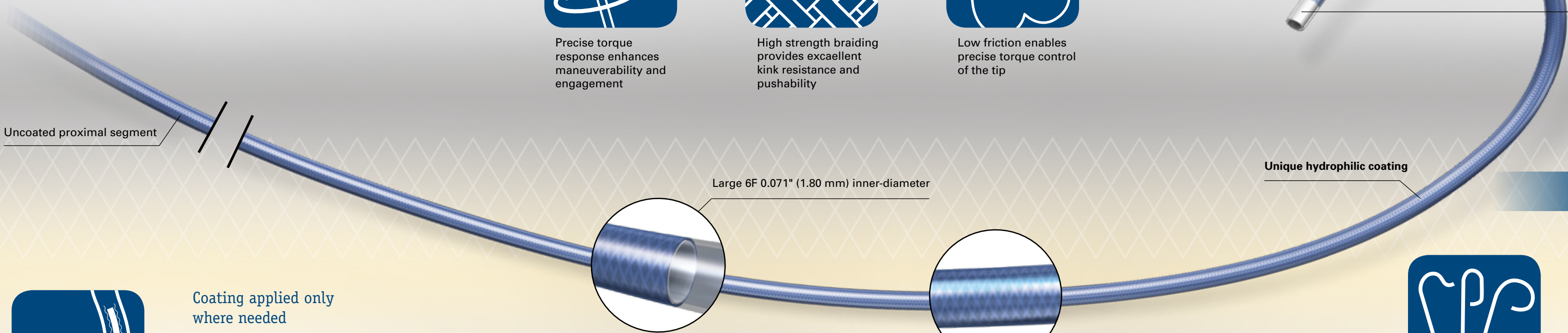
Robust shape portfolio to address anatomy variations



Uncoated distal segment designed to provide contralateral wall support during device advancement



Designed for excellent shape retention during prolonged procedure times



Uncoated proximal segment

Large 6F 0.071" (1.80 mm) inner-diameter

Ultra-thin 1 x 2 flat wire braid pattern

Unique hydrophilic coating