



TECHNICAL DATA SHEET (TDS) ELASTIC BANDAGE

Purpose of Use

Elastic bandage used to provide flexible support and compression during activity. Ideal for strains and sprains. This style fits all parts of the body, is washable and reusable. Used in healthcare facilities or over the counter.

Characteristic
Components

Features
70% cotton, 25% latex, 5% polyester
2 rolls of woven elastic material with selvedge edges (self-finished), held by clips. In compliance with TS 5098.

Tanım

| w* | L (non streched)* | L (streched)** |
|------|-------------------|----------------|
| 5cm | 1,5m | 4,5m |
| 6cm | 1,5m | 4,5m |
| 8cm | 1,5m | 4,5m |
| 10cm | 1,5m | 4,5m |
| 12cm | 1,5m | 4,5m |
| 15cm | 1,5m | 4,5m |
| 20cm | 1,5m | 4,5m |

* Can be cut to desired length.
** Maximum elasticity. It provides at least 120% elasticity.

Additional information

Class class-I other **GMDN** 10284 **Branch Type code** 916-BANDAJ
Shelf life 5 years
Storage status Store at ambient temperature and in a dry place
Packaging Appropriate packaging and packing is done.

| Packaging information | | | | |
|-----------------------|---------------|-----------|------------|------------|
| Reference no | GTIN no | sizes | pcs / crtn | crtn sizes |
| EASY411069 | 8684072228337 | 20 cm x 3 | 200 pcs | 40x50x43 |
| EASY411058 | 8684072228221 | 15 cm x 5 | 400 pcs | 40x50x43 |
| EASY411047 | 8684072228115 | 12cm x 5 | 500 pcs | 40x50x43 |
| EASY411036 | 8684072228009 | 10 cm x 3 | 500 pcs | 40x50x43 |
| EASY411027 | 8684072227910 | 8cm x 2M | 500 pcs | 40x50x43 |



Clinisponge® is an implantable, absorbable gelatin sponge with haemostatic effect and used in surgical procedures to achieve fast and effective hemostasis.

The sponge has a uniform porosity and reacts naturally to coagulation process.

Properties & Advantages

- Biocompatible and completely resorbable
- High absorption capacity - up to 35 times of its own weight
- Resorbed approx. in 3-4 weeks
- Used as a carrier for drugs
- Used dry or soaked with sterile sodium chloride solution
- Well adhering ability to the bleeding site
- Variety of sizes
- Can be cut to desired size



CE 2460



Indications

- General surgery
- Orthopaedic surgery
- Thoracic surgery
- Neurosurgery
- Gynecology
- Urology
- Maxillofacial surgery
- Orthopaedic surgery
- Thoracic surgery



| Type | Size | Pcs/Box | Reference |
|----------------------|-------------------|---------|-----------|
| Clinisponge Standart | 80 x 50 x 10 mm | 10 | CL5810 |
| Clinisponge Standart | 70 x 50 x 10 mm | 10 | CL5710 |
| Clinisponge Special | 80 x 50 x 1 mm | 10 | CL5811 |
| Clinisponge Special | 70 x 50 x 1 mm | 10 | CL5711 |
| Clinisponge Film | 200 x 70 x 0,5 mm | 10 | CL2075 |
| Clinisponge Dial | 30 x 30 x 10 mm | 10 | CL3010 |
| Clinisponge Tampon | 80 x ø30 mm | 5 | CL8030 |
| Clinisponge Dental | 10 x 10 x 10 mm | 50 | CL1010 |
| Clinisponge Dental | 14 x 7 x 7 mm | 50 | CL1477 |
| Clinisponge Powder | 1 gr | 5 | CL1000 |



Indications

- General surgery
- Orthopaedic surgery
- Thoracic surgery
- Neurosurgery
- Gynecology
- Urology
- Maxillofacial surgery
- Orthopaedic surgery
- Thoracic surgery

| Type | Size | Pcs/Box | Reference |
|----------------------|-------------------|---------|-----------|
| Clinisponge Standart | 80 x 50 x 10 mm | 10 | CL5810 |
| Clinisponge Standart | 70 x 50 x 10 mm | 10 | CL5710 |
| Clinisponge Special | 80 x 50 x 1 mm | 10 | CL5811 |
| Clinisponge Special | 70 x 50 x 1 mm | 10 | CL5711 |
| Clinisponge Film | 200 x 70 x 0,5 mm | 10 | CL2075 |
| Clinisponge Dial | 30 x 30 x 10 mm | 10 | CL3010 |
| Clinisponge Tampon | 80 x ø30 mm | 5 | CL8030 |
| Clinisponge Dental | 10 x 10 x 10 mm | 50 | CL1010 |
| Clinisponge Dental | 14 x 7 x 7 mm | 50 | CL1477 |
| Clinisponge Powder | 1 gr | 5 | CL1000 |

ANTIMICROBIAL INCISE DRAPE



HI-TEC drape contains developed iodophor. Iodophor provides high and fast disinfection with application.

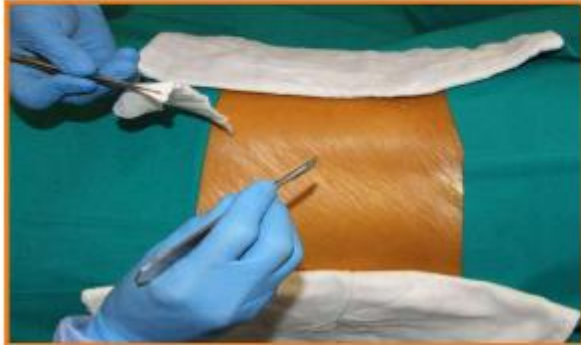
Especially it is important in implant surgeries.

Implants act as hideouts for bacterias and increase the risk.

Postoperative infections are major problem for surgeons.

There are some major skin pathogens responsible for postoperative infections on the following:

Staphylococcus aureus
Staphylococcus epidermidis
Escherichia coli
Escherichia enterococci



| CODE(KOD) | SIZE(EBAT) |
|------------------------------------|-----------------|
| ID3030 | 30X30 cm |
| ID3535 | 35X35 cm |
| ID4545 | 45X45 cm |
| ID4560 | 45X60 cm |
| ID5645 | 56X45 cm |
| ID6060 | 60X60 cm |
| ID6045 | 60X45 cm |
| ID6080 | 60X80 cm |
| ID6090 | 60X90 cm |
| CUSTOMIZED SIZES ARE AVAILABLE | |
| ÖZELLEŞTİRİLMİŞ EBAATLAR MEVCUTTUR | |

Ameliyat sonrası enfeksiyonlar, cerrahlar için ameliyatlarda büyük sorun oluşturur. Ameliyat sonrası enfeksiyonlara neden olan bazı deri patojenleri şu şekildedir:

Staphylococcus aureus
Staphylococcus epidermidis
Escherichia coli
Escherichia enterococci

Tracheostomy Tube

Cuffed

- ▶ Swivel 15 mm connector provides easy handling
- ▶ Flexible neckplate with slits for strap insertion providing secure positioning
- ▶ Designated size and nominal outside diameter markings on the neckplate
- ▶ Reliable inflation apparatus comprising of inflating tube, pilot balloon, and a check-valve with luer connection
- ▶ Soft, thin-walled, high-volume, low-pressure cuff
- ▶ Atraumatic, soft rounded tip, transparent, curved cannula
- ▶ Clear radiopaque line facilitates to help spatial positioning
- ▶ Obturator to prevent tissue drag and lumen obstruction



| Ref | Size | Length (mm) |
|------------|------|-------------|
| 555 0050 1 | 5.0 | 57 |
| 555 0055 1 | 5.5 | 57 |
| 555 0060 1 | 6.0 | 55 |
| 555 0065 1 | 6.5 | 61 |
| 555 0070 1 | 7.0 | 67 |
| 555 0075 1 | 7.5 | 73 |
| 555 0080 1 | 8.0 | 80 |
| 555 0085 1 | 8.5 | 84 |
| 555 0090 1 | 9.0 | 91 |

Thoracic Catheter

With Trocar, Standard Tip

- ▶ Trocar with tri-facetted cutting tip
- ▶ Flexible tubing wall provides leak proof tissue/tubing interface and easy milking
- ▶ Tapered tip for easy and safe insertion
- ▶ Cross side eyes to prevent tissue aspiration
- ▶ Radiopaque line
- ▶ Accurate positioning depth marks at each cm starting 2 cm from the distal end
- ▶ Integral large bore tapered connector



| Ref | Size | Length |
|------------|-------|--------|
| 184 1201 1 | 12 Ch | 225 mm |
| 184 1601 1 | 16 Ch | 235 mm |
| 184 2001 1 | 20 Ch | 390 mm |
| 184 2401 1 | 24 Ch | 390 mm |
| 184 2801 1 | 28 Ch | 390 mm |
| 184 3201 1 | 32 Ch | 390 mm |



Thoracic Catheter

With Trocar, Standard Tip

- ▶ Trocar with tri-faceted cutting tip
- ▶ Flexible tubing wall provides leak proof tissue/tubing interface and easy milking
- ▶ Tapered tip for easy and safe insertion
- ▶ Cross side eyes to prevent tissue aspiration
- ▶ Radiopaque line
- ▶ Accurate positioning depth marks at each cm starting 2 cm from the distal end
- ▶ Integral large bore tapered connector



| Ref | Size | Length |
|------------|-------|--------|
| 184 1201 1 | 12 Ch | 225 mm |
| 184 1601 1 | 16 Ch | 235 mm |
| 184 2001 1 | 20 Ch | 390 mm |
| 184 2401 1 | 24 Ch | 390 mm |
| 184 2801 1 | 28 Ch | 390 mm |
| 184 3201 1 | 32 Ch | 390 mm |



Thoracic Catheter

With Trocar, Standard Tip

- ▶ Trocar with tri-faceted cutting tip
- ▶ Flexible tubing wall provides leak proof tissue/tubing interface and easy milking
- ▶ Tapered tip for easy and safe insertion
- ▶ Cross side eyes to prevent tissue aspiration
- ▶ Radiopaque line
- ▶ Accurate positioning depth marks at each cm starting 2 cm from the distal end
- ▶ Integral large bore tapered connector



| Ref | Size | Length |
|------------|-------|--------|
| 184 1201 1 | 12 Ch | 225 mm |
| 184 1601 1 | 16 Ch | 235 mm |
| 184 2001 1 | 20 Ch | 390 mm |
| 184 2401 1 | 24 Ch | 390 mm |
| 184 2801 1 | 28 Ch | 390 mm |
| 184 3201 1 | 32 Ch | 390 mm |



BONE WAX

Cliniwax 2,5 g



Bone wax is a sterile haemostatic material to control of bleeding in bone injuries. Hemostatic effect will be produce mechanically by occlusion of intaosseous vessels during surgical procedures.

Bone wax is produced from PH Eur beeswax.

Indications

- In orthopedic surgery & traumatology
- In orthopedic surgery - sternum ve costa
- In Dental & maxillofacial cerrahi
- In neurosurgery - trepanation
- In general and plastic surgery

Advantages

- Soft and easy to form
- Easy to use
- Double packaged
- Gamma sterilized

| Type | Size | Pcs/Box | Reference |
|---------|-------|---------|-----------|
| Bonewax | 2,5gr | 24 | BW24 |





ARN < 104B

Functions like the classical Philadelphia collar. It has a tracheal opening in the front. Made of plastizote and suitable for MR monitoring as it does not contain any metal parts.

Lot 194

ARS08 - Ciorapi antitrombotici, pana la coapsa



Ciorapi medicali anti-trombotici, pana la coapsa - ARS08

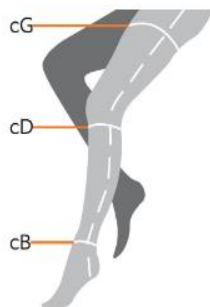
Utilizarea ciorapilor anti-trombotici previne aparitia fenomenului de formare a unor mici cheaguri de sange (tromboze) extrem de periculoase pentru sanatatea pacientului, la persoanele care au o activitate musculara redusa a membrelor inferioare.

Se recomanda purtarea ciorapilor anti-trombotici:

- in prevenirea venelor varicoase si a trombozelor
- pentru pacientii imobilizati la pat din cauza unor afectiuni locomotorii
- in perioada spitalizarii pre- si post-operatorii
- persoanelor care au afectiuni circulatorii venoase ale membrelor inferioare

Material: 82% poliamida, 18% elastan

Marimi:



1 - Small

2 - Medium

3 - Large

4 - X Large

5- XX Large

6- XXX Large

18-20 (cB)

20-22 (cB)

22-24 (cB)

24-26 (cB)

26-28 (cB)

28-30 (cB)

27-32 (cD)

28-35 (cD)

32-38 (cD)

34-41 (cD)

36-44 (cD)

38-47 (cD)

43-58 (cG)

46-61 (cG)

49-64 (cG)

52-68 (cG)

56-71 (cG)

60-74 (cG)

Lot 198

Umbilical Cord Clamp

- ▶ Lock security to prevent accidental opening
- ▶ Solid grip with toothed design
- ▶ Rounded edges to prevent skin irritation



| Ref |
|------------|
| 230 0001-1 |

Lot 203

Smooth Bore

22F

Bronchoscopy/Aspiration Port

Double Swivel

22 M/15F

Dead space (ml): 30

| Length | Code | Qty/Box |
|-----------|--------|---------|
| 15 cm/~6" | 316300 | 75 |

JARS

AUTOCLAVABLE and DISPOSABLE JARS for SUCTION UNITS

27

REUSABLE JARS are equipped with screw cover with handle for easy grip, autoclavable silicone o-ring for tight seal, overflow valve system integrated in the cover, clear graduated scale in ml with 100ml or 200ml intervals, CA-MI branding. Suitable for central vacuum systems and CA-MI suction units. Available in two types of polycarbonate, Makrolon® and Apec®.

REUSABLE JARS in MAKROLON® – FOR STEAM STERILIZATION UP TO 121 °C



| | Jar with: cover overflow valve o-ring | Jar | Cover with: overflow valve o-ring | O-ring | Suitable for: |
|---------|--|-----------|---|-----------|---|
| 400 ml | RE 210301 | RE 210305 | RE 210302 | RE 210304 | EMIVAC |
| 1000 ml | RE 210001/02 | RE 210003 | RE 210352/01 | RE 210354 | ASPIRET ASKIR series (all except C30 series) Central Vacuum Plants |
| 2000 ml | <u>RE 210351/01</u> | RE 210353 | RE 210352/01 | RE 210354 | ASPIRET - ASKIR Series HOSPIVAC Series Central Vacuum Plants |
| 4000 ml | RE 210006 | RE 210007 | RE 210008 | RE 210306 | HOSPIVAC Series Vuoto centralizzato |
| 5000 ml | RE 210010 | RE 210013 | RE 210012 | RE 210307 | HOSPIVAC Series Central Vacuum Plants |

ARMOR CLASSICS



Steel
Rods

| | | | | |
|-------|-------|--------|---------|---------|
| S | M | L | XL | XXL |
| 70-80 | 80-90 | 90-100 | 100-110 | 110-120 |



trunk

Available colors;

ARC
◀
330K

This product is applicable to correct the dorsal vertebra and reduce kyphosis, in traumas of lumbar and thoracic vertebra and postural abnormalities. Contains a pair of steel inserts.



| | | | | |
|-------|-------|--------|---------|---------|
| S | M | L | XL | XXL |
| 70-80 | 80-90 | 90-100 | 100-110 | 110-120 |

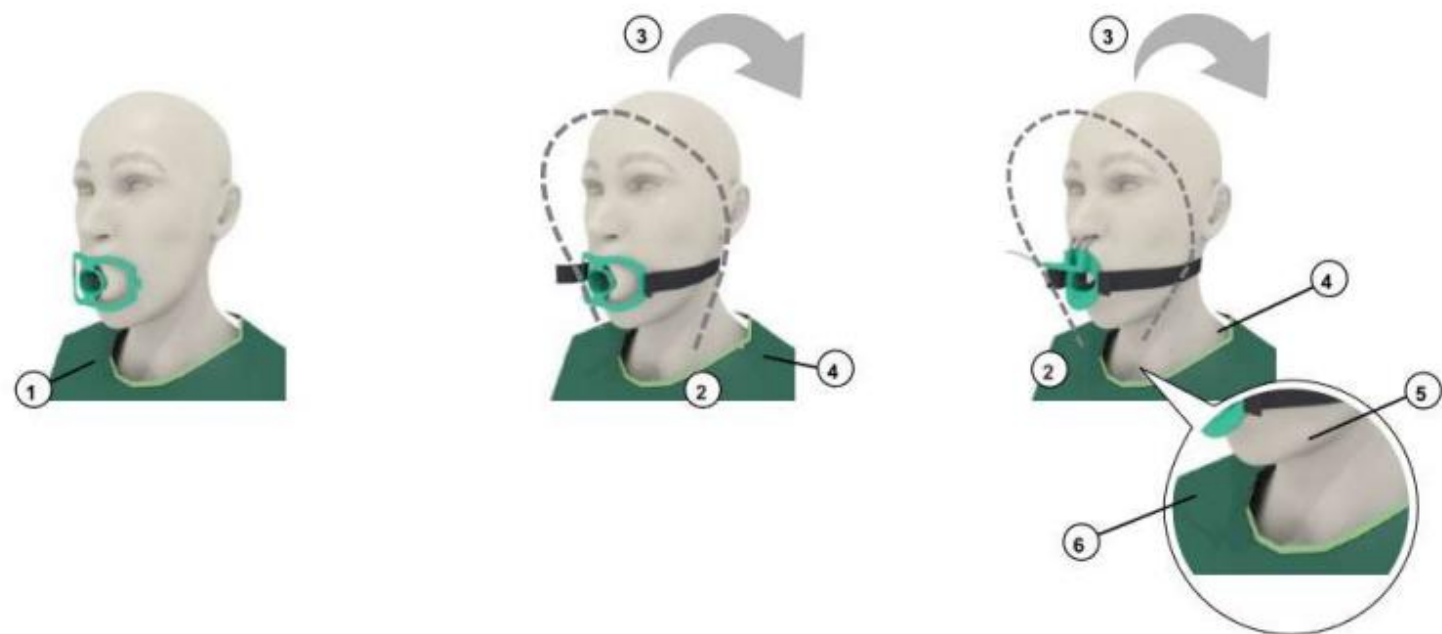


Available colors;

ARC
◀
320K

This product is actively used for facet joint problems of the lumbago, unbalanced postural muscles of the lumbar spine, ligament problems, osteokondrosis, spondiliosis, spondiliartosis and chronic back pains. Air permeable elastic filamented woven textile. 32 cm back height. Comes with built-in additional belt.

Endoscopy Mouthpieces



| REF NO | PRODUCT NAME | STERILIZATION |
|--------|---|---------------|
| 207 01 | Endoscopy Mouthpiece with Strap (Adult) | EO |
| 207 02 | Endoscopy Mouthpiece with Strap (Pediatric) | EO |

Elastic Fixation Tape

Ideal for fixation of dressing pads, catheters, canulla and various medical applications. Flexible structure allows to use on joints & various body contours, made of flexible nonwoven fabric. Hypoallergenic adhesive (strong, long lasting adhesion). Does not leave residues when removed. X-ray permeable,Air permeable.

| Ref No | Dimensions | Carton | Box |
|---------------------------------|-------------|-------------------|--------------|
| Non-woven, individually packed. | | | |
| IC4502 | 5m x 2,5cm | 288 Pcs. / Carton | 1 Pcs. / Box |
| IC4505 | 5m x 5cm | 144 Pcs. / Carton | 1 Pcs. / Box |
| IC4510 | 5m x 10cm | 72 Pcs. / Carton | 1 Pcs. / Box |
| IC4102 | 10m x 2,5cm | 180 Pcs. / Carton | 1 Pcs. / Box |
| IC4105 | 10m x 5cm | 90 Pcs. / Carton | 1 Pcs. / Box |
| IC4110 | 10m x 10cm | 45 Pcs. / Carton | 1 Pcs. / Box |
| IC4115 | 10m x 15cm | 30 Pcs. / Carton | 1 Pcs. / Box |
| IC4120 | 10m x 20cm | 20 Pcs. / Carton | 1 Pcs. / Box |
| IC4130 | 10m x 30cm | 15 Pcs. / Carton | 1 Pcs. / Box |



Eye Pad

Suitable for anatomical structure of eye. Protects the eye from external factors. It has high absorbent pad and flexible carrier. Can be used under glasses. Available in different sizes for children and adults. Made of non-woven fabric. It has strong and permanent adhesive. It is X-ray permeable. Air permeable. Hypoallergenic. Latex free.

| Ref No | Dimensions | Carton | Box |
|---|---------------|-------------------|---------------|
| Non-woven, sterile, with absorbent pad. | | | |
| C6950 | 6,5cm x 9,5cm | 500 Pcs. / Carton | 50 Pcs. / Box |



→ Bacterial-Viral Filters

- Transparent,easy to see the surface

→ High efficiency with low resistance electrostatic filters

→ Effective to prevent microbial cross contamination

→ Remarkably efficient heat and moisture exchangers
- 15 mm/22 mm connectors conforming to ISO Standards

→ Retainable cap


→ Inspected and approved by third party experts

| | | |
|--|----------------------------|----------------------------------|
| <div>Bacterial-Viral</div> <div>Filter without port sterile</div> | Code | 40900S |
| | Qty/Box | 50 |
| | Tidal Volume(ml) | 150-1500 |
| | Dead Space(ml) | 33 |
| | Bacterial-Viral Efficiency | >99,999% |
| | Viral Efficiency | >99,99% |
| | Resistance to Flow | 30 lt/min 8 mm H ₂ O |
| | | 60 lt/min 17 mm H ₂ O |
| | | 90 lt/min 27 mm H ₂ O |
| | Weight (gr) | 17,2 |
| | Fittings | 22F-15M/22 M-15F |

→ Mini Filters

- Optimal filtration performance
- Flat ergonomic design
- Small and light weight
- Gas sampling port


- Straight and angled version
- Latex free
- Inspected and approved by third party experts

| | | |
|---|---------------------------|--|
| Bacterial-Viral HME Neonatal Filter with paper HME  | Code | 40210 |
| | Sterile Code | 40210S |
| | Qty/Box | 75 |
| | Tidal Volume(ml) | 50-150 |
| | Dead Space(ml) | 8 |
| | Filtration Efficiency | BFE 99,999%; VFE 99,99% |
| | Humidification Efficiency | 22 mg/l H ₂ O (250 ml. tid. vol.) |
| | Resistance to Flow | 10 lt/min 13mm H ₂ O |
| | | 15 lt/min 24mm H ₂ O |
| | | 30 lt/min 60mm H ₂ O |
| | Weight (gr) | 7,5 |
| | Fittings | 15M/15F |

• Bacterial-Viral HME Filters

- Transparent
- Low dead space
- Gas sampling port available
- Straight and angled choices

- Low resistance
- Latex-free
- Inspected and approved by third party experts

| | | |
|--|----------------------------|---|
| Bacterial-Viral HME Filter with paper HME  | Code | 40820 |
| | Sterile Code | 40820S |
| | Qty/Box | 45 |
| | Tidal Volume(ml) | 150-1500 |
| | Dead Space(ml) | 53 |
| | Bacterial-Viral Efficiency | >99,999% |
| | Viral Efficiency | >99,99% |
| | Resistance to Flow | 30 lt/min 10 mm H ₂ O |
| | | 60 lt/min 22 mm H ₂ O |
| | | 90 lt/min 36 mm H ₂ O |
| | Weight (gr) | 26,2 |
| | Fittings | 22F-15M/22M-15F |
| | Humidification efficiency | 37,3 mg/l H ₂ O (500 ml tid. vol.) |



V1



V2



V3 TP



- Cotton surfaces touching the skin absorbs the sweat.
- Does not cause allergy and irritation in case of long term use.
- Cannula can be placed and removed without moving the patient's neck

STAENDERMED - V

Velcro Supported Holders

Holds the cannula with the agency of velcro (V) lock, 3 different models

V1 Single piece mid-supported

The middle portion of the tube wraps, 2 sizes.

V2 Single piece side-supported

The part close to the tube-to-end wraps 3 sizes.

V3 Two pieces model

One size.

by the usage of single piece side-supported and two pieces models.

- Three different types of Endotracheal Cannula Holders: Velcro supported, silicon supported and clomp supported.
- Gamma sterilized.



S1



S2

S3 TP



STAENDERMED - SC

Silicone Supported Holder Bands

Holder band fixes the cannula by gripping it with its silicone surface (S). There are 3 different models.

S1 Single piece, supported at middle part model.

The middle part wraps and grips the cannula. There are 2 sizes.

S2 Single piece, supported by side part model.

The part close to one end wraps and grips the cannula. There are 3 sizes.

S3 TP Two pieces model

There is only one standard single size.

Staendermed Ordering Information

| Model | Size (cm) | Pieces / Pouch | Pouch/ Box | Box Size (cm) | Box Weight | Order Code |
|-------|-----------|----------------|------------|---------------|------------|------------|
| V1 | 55 | 1 | 25 | 11 x 20 x 25 | 330 gr. | ETH 101 |
| | 65 | 1 | 25 | 11 x 20 x 25 | 345 gr. | ETH 102 |



FESTERMED Classic

- For the use of inpatient both bed or litter.
- Skin touch cotton surface absorbs the sweat.
- In case of long term use does not cause allergy and irritation.
- Gamma sterilized.

CE 1793

| Festermed Ordering Information | | | | | | |
|--------------------------------|-----------|---------------|------------|---------------|------------|------------|
| Model | Size (cm) | Piece / Pouch | Pouch/ Box | Box Size (cm) | Box Weight | Order Code |
| Deluxe | 34 | 1 | 25 | 20 x 30 x 20 | 1215 gr. | ALH 2006 |
| Deluxe / Çift | 34 | 2 | 12 | 20 x 30 x 20 | 1175 gr. | ALH 2007 |
| Twain | 32 | 1 | 25 | 20 x 30 x 20 | 1275 gr. | TC 2009 |
| QRB | 27 | 1 | 25 | 20 x 30 x 20 | 1790 gr. | QRB 2013 |
| QRB / Çift | 27 | 2 | 12 | 20 x 30 x 20 | 1726 gr. | QRB 2014 |
| Klasik El | 25 | 1 | 25 | 20 x 30 x 20 | 850 gr. | ALH 2001 |
| Klasik El / Çift | 25 | 2 | 12 | 20 x 30 x 20 | 815 gr. | ALH 2008 |
| Klasik Ayak | 40 | 1 | 25 | 20 x 30 x 20 | 910 gr. | ALH 2002 |
| Klasik Ayak / Çift | 40 | 2 | 12 | 20 x 30 x 20 | 885 gr. | ALH 2010 |
| Klasik Bacak | 65 | 1 | 25 | 20 x 30 x 20 | 1100 gr. | ALH 2003 |
| Metal El | 25 | 1 | 25 | 20 x 30 x 20 | 1215 gr. | ALH 2011 |
| Metal El / Çift | 25 | 2 | 12 | 20 x 30 x 20 | 1130 gr. | ALH 2012 |

BINDERMED

Baby Limb Holder



- Easy to use and pratique.
- Both use for hand and leg wrist.
- Skin touch surface absorbs the sweat.



- Covers the wrist safely and stable with its connection ribbons.
- Does not irritate the skin and cause allergy.
- Gamma sterilized.

| Bindermed Ordering Information | | | | | | |
|--------------------------------|-----------|---------------|------------|---------------|------------|------------|
| Model | Size (cm) | Piece / Pouch | Pouch/ Box | Box Size (cm) | Box Weight | Order Code |
| Bindermed | 3 x 11 | 1 | 25 | 11 x 20 x 25 | 263 gr. | BLH 3001 |

CE 1783



REF 202-01

Components of The Product

Medbar brand Cardboard Video Camera Cover (202 01) consists of 3 parts:

- Cardboard,
- Cover and
- Adhesive tape.

Product Features

- Centralized hanger hall.
- Telescopically folded.
- Single layer thickness is 40 micron.
- Eight layer folding allows the cover to pass over the camera easier and faster.
- Compatible with all endoscopic cameras.
- Different sizes available.



| REF NO | PRODUCT NAME | STERILIZATION | PACKAGING UNIT |
|--------|----------------------------------|---------------|------------------|
| 202-15 | Cardboard Camera Cover 14x140 cm | EO | 50 pcs inner box |
| 202-01 | Cardboard Camera Cover 14x250 cm | EO | 400 pcs outerbox |
| 202-25 | Cardboard Camera Cover 14x300 cm | EO | Box Dimensions: |
| 202-16 | Cardboard Camera Cover 18x300 cm | EO | 38*47*43 cm |
| 202-17 | Cardboard Camera Cover 18x250 cm | EO | |



Disposable Hypodermic Syringe

PP Material, medical grade, high transparent, imported from South Korea and Saudi Arabia

Accurate and clear scale printing assures rapid and precise operation

Specially formulated latex or latex free piston for excellent sliding performance

Available types: luer slip, luer lock or catheter tip

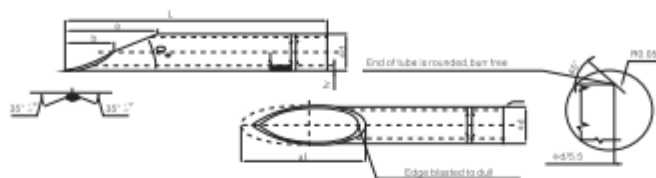
Available sizes: 1ml 2ml 2.5ml 3ml 5ml 10ml 20ml 30ml 50ml 60ml 100ml 150ml

Usual package: individual polybag, blister, bulk packing or as per request

Sterilizing method: Ethylene oxide Sterilization or Gamma

| SYRINGE CAPACITY | LUER TIP | | | | INDIVIDUAL PACKING |
|---------------------|-----------------------|-------------------------------------|-----------------------|-----------------------|--------------------|
| | SLIP | LOCK | CATHETER | ECCENTRIC | |
| 1ml U100/40 Insulin | <input type="radio"/> | | | | PE Bag or Blister |
| 1ml Tuber | <input type="radio"/> | <input type="radio"/> | | | PE Bag or Blister |
| 1ml | <input type="radio"/> | <input type="radio"/> | | | PE Bag or Blister |
| 2ml | <input type="radio"/> | <input type="radio"/> | | | PE Bag or Blister |
| 3ml | <input type="radio"/> | <input type="radio"/> | | | PE Bag or Blister |
| 5ml | <input type="radio"/> | <input type="radio"/> | | <input type="radio"/> | PE Bag or Blister |
| 10ml | <input type="radio"/> | <input type="radio"/> | | <input type="radio"/> | PE Bag or Blister |
| 20ml | <input type="radio"/> | <input type="radio"/> | | <input type="radio"/> | PE Bag or Blister |
| 30ml | <input type="radio"/> | <input type="radio"/> | <input type="radio"/> | <input type="radio"/> | PE Bag or Blister |
| 50ml | <input type="radio"/> | <input checked="" type="checkbox"/> | <input type="radio"/> | <input type="radio"/> | PE Bag or Blister |
| 60ml | <input type="radio"/> | <input type="radio"/> | <input type="radio"/> | <input type="radio"/> | PE Bag or Blister |
| 100ml | <input type="radio"/> | <input type="radio"/> | <input type="radio"/> | <input type="radio"/> | PE Bag or Blister |
| 150ml | <input type="radio"/> | <input type="radio"/> | <input type="radio"/> | <input type="radio"/> | PE Bag or Blister |

Disposable Hypodermic Needle



| Normal size Φd | | Diameter Limits(mm) | | Inner Diameter min(mm) | | | Point sizes(mm) | | | | | | | | | Color Code | | |
|---------------------------|---------|---------------------|-------|------------------------|-----------|-----------------|-----------------|------|-------|---------|-------|------|---------|------|-------|-------------|-------|--|
| | | | | | | | Standard | | | Medium | | | Short | | | | | |
| Gauge | Nominal | Lower | Upper | Regular wall | Thin wall | Extra Thin wall | a | a1 | b | a | a1 | b | a | a1 | b | | | |
| 30G | 0.30 | 0.298 | 0.302 | 0.133 | 0.165 | | 1.60 | 1.79 | 0.70 | | | | | | | Yellow | | |
| 29G | 0.33 | 0.298 | 0.332 | 0.133 | 0.190 | | 1.70 | 1.97 | 0.70 | | | | | | | Red | | |
| 28G | 0.36 | 0.328 | 0.352 | 0.133 | 0.190 | | 1.90 | 2.08 | 0.80 | | | | | | | Red | | |
| 27G | 0.40 | 0.348 | 0.406 | 0.184 | 0.241 | | 2.10 | 2.26 | 0.90 | 1.45 | 1.73 | 0.65 | 1.30 | 1.49 | 0.60 | Cool grey | | |
| 26G | 0.45 | 0.399 | 0.452 | 0.232 | 0.292 | | 2.30 | 2.55 | 1.00 | 1.70 | 1.95 | 0.80 | 1.40 | 1.68 | 0.65 | Brown | | |
| 25G | 0.50 | 0.448 | 0.512 | 0.232 | 0.292 | | 2.50 | 2.80 | 1.20 | 2.00 | 2.21 | 0.90 | 1.65 | 1.84 | 0.80 | orange | | |
| 24G | 0.55 | 0.508 | 0.562 | 0.280 | 0.343 | | 2.80 | 3.17 | 1.30 | 2.20 | 2.43 | 1.00 | 1.90 | 2.09 | 0.80 | Purple | | |
| 23G | 0.60 | 0.555 | 0.622 | 0.317 | 0.440 | 0.460 | 3.20 | 3.51 | 1.50 | 2.50 | 2.69 | 1.20 | 2.10 | 2.31 | 1.00 | Blue | | |
| 22G | 0.70 | 0.617 | 0.712 | 0.390 | 0.370 | 0.522 | 3.90 | 4.24 | 1.80 | 2.80 | 3.07 | 1.30 | 2.40 | 2.65 | 1.10 | Black | | |
| 21G | 0.80 | 0.705 | 0.812 | 0.490 | 0.547 | 0.610 | 4.20 | 4.59 | 2.00 | 3.20 | 3.51 | 1.40 | 2.80 | 3.02 | 1.20 | Green | | |
| 20G | 0.90 | 0.805 | 0.912 | 0.560 | 0.635 | 0.687 | 4.50 | 4.91 | 2.10 | 3.60 | 3.94 | 1.60 | 3.10 | 3.40 | 1.30 | Yellow | | |
| 19G | 1.10 | 0.905 | 1.110 | 0.648 | 0.750 | 0.850 | 5.20 | 5.66 | 2.40 | 4.25 | 4.55 | 2.00 | 3.70 | 3.92 | 1.60 | Cream | | |
| 18G | 1.20 | 1.050 | 1.282 | 0.790 | 0.910 | 1.041 | 5.70 | 6.58 | 2.60 | 5.00 | 5.54 | 2.40 | 4.50 | 4.78 | 2.00 | Pink | | |
| 17G | 1.40 | 1.275 | 1.405 | 0.950 | 1.156 | 1.244 | 6.00 | 6.87 | 2.80 | 5.50 | 6.07 | 2.70 | 5.00 | 5.23 | 2.30 | Red-blue | | |
| 16G | 1.60 | 1.398 | 1.632 | 1.100 | 1.283 | 1.390 | 6.50 | 7.66 | 3.00 | 6.00 | 7.06 | 2.90 | 5.70 | 6.08 | 2.60 | White | | |
| 15G | 1.80 | 1.798 | 1.805 | 1.300 | 1.460 | 1.560 | 7.00 | 8.46 | 3.20 | 6.70 | 7.80 | 3.10 | 6.40 | 6.72 | 3.00 | Bulu gray | | |
| 14G | 2.10 | 2.090 | 2.110 | 1.500 | 1.600 | 1.727 | 8.20 | 9.88 | 3.70 | 7.70 | 9.09 | 3.70 | 7.20 | 7.84 | 3.20 | Light-green | | |
| Tolerance of point size | | | | | | | ±0.20 | | ±0.10 | | ±0.20 | | ±0.15 | | ±0.15 | | ±0.10 | |
| Angle range of cannula:α° | | | | | | | 17° ±2° | | | 14° ±2° | | | 17° ±2° | | | | | |