

BAYLAN

WATER METERS

TY-26

Multi jet Wet type Water Meter



GENERAL

- MID Certified
- Multi jet working principle assures a long service time
- Available for optical reading
- Electrostatic painted body made of corrosion resistant brass
- Pulse output optional
- Suitable for potable water
- Non return valve
- Low pressure loss, high sensitivity at initial flow
- Special glass with high resistance to pressure and impact
- 360° rotating lid • Double filter
- Suitable for cold water up to 50°C
- Almost no maintenance • 3 years of warranty
- Service and spare parts available for 10 years
- Environmental Classes

Climatic : -10°C/+55°C | Mechanic: M1/O | Elektromagnetic: E2

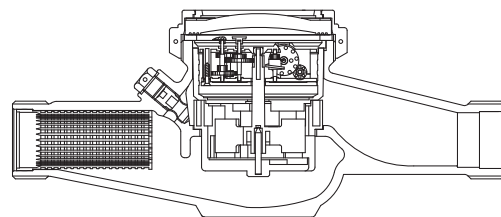
- $Q2 \leq Q \leq Q4$ Maximum Permissible Error

Class 2 Water Meters; $\% \pm 2$ (Water Temp. $\leq 30^\circ\text{C}$), $\% \pm 3$ (Water Temp. $> 30^\circ\text{C}$)

Class 1 Water Meters; $\% \pm 1$ (Water Temp. $\leq 30^\circ\text{C}$), $\% \pm 2$ (Water Temp. $> 30^\circ\text{C}$)

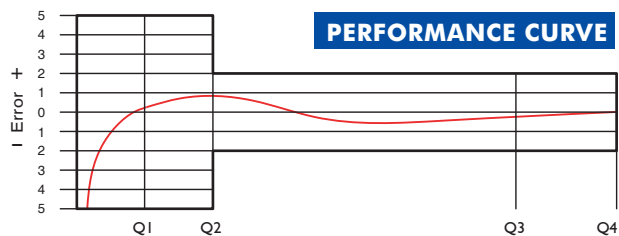
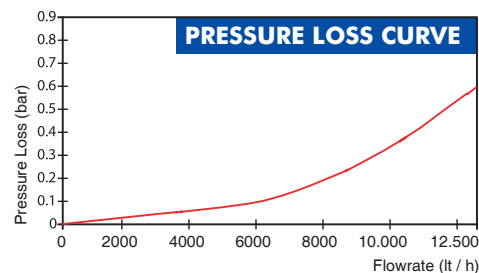
- $Q1 \leq Q < Q2$ Maximum Permissible Error

Class 2 Water Meters; $\% \pm 5$ | Class 1 Water Meters; $\% \pm 3$



PERFORMANCE DATA

Overload Flowrate	Q4	m ³ /h	12,5
Permanent Flowrate	Q3	m ³ /h	10
Transitional Flowrate	Q2	m ³ /h	0,064 0,2
Minimum Flowrate	Q1	m ³ /h	0,04 0,125
Q3/Q1 (MI-001 OIML R49)	-		≤ 250 ≤ 80
Mounting on the network	-	H	V
Maximum Registration Capacity	m ³	9999 / 99999 / 99999,99 / 99999,999	
Maximum Working Pressure	bar	16	
Maximum Working Temperature	°C	50	
Pressure Loss Class	bar	0,63	
Initial Flow	Qi	l/h	15
Smallest Reading Resolution	m ³	0,00005	
Class	-	Class 1/Class 2	
Unit weight	kg	2,28	
Package Weight (without connect)	kg	23,99	
Package Weight (with connect)	kg	30,79	
Quantity per package	-	10	
Package dimensions	cm	26,5x52x30,5	



DIMENSIONS

Nominal diameter	DN	32	mm
Connecting diameter	D	G1 1/2	B
Total overall meter height	H	124	mm
Axis height	h	47	mm
Width	B	100	mm
Length	L	260	mm
Length with connections	LB	385	mm

