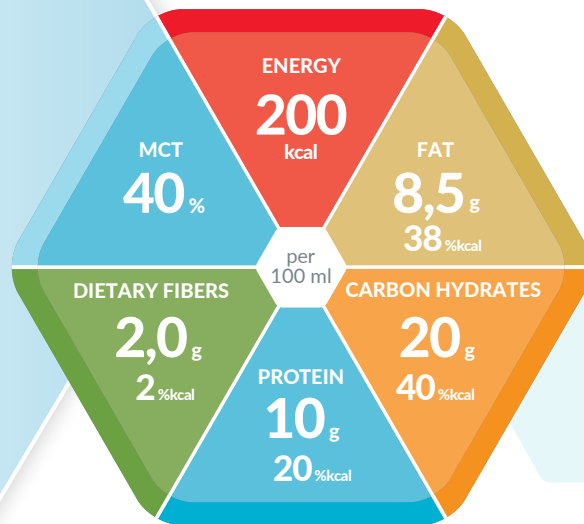


# isosoource® 2.0 protein fibre



SmartFlex®



## HIGH-PROTEIN AND HIGH-ENERGY TUBE FEEDS WITH DIETARY FIBERS

### Product Properties

- High caloric (2,0 kcal / ml)
- High in protein (20% kcal)
- High in dietary fiber (50% soluble and 50% insoluble dietary fibers)
- 40% MCT in fat content
- Low in lactose (< 0,5 g / 100 ml)
- Gluten free

### Indications

- To meet increased protein and/or energy requirements in the absence of or limited ability to provide adequate oral nutrition
- In case of impending or existing malnutrition, especially in case of increased protein requirement, e.g. in case of wound healing disorders, metabolic stress, trauma, after operations, for oncological and/or geriatric patients
- In case of restriction of fluid intake (cardiac and/or renal insufficiency, etc.)
- Physiological long-term nutrition – also suitable for diabetes mellitus or reduced glucose tolerance dosage

### Dosage

- **For exclusive nutrition:**  
750 to 1,000 ml per day
- **For supplemental nutrition:**  
≥ 250 ml per day or as directed by a physician

### Storage

Store unopened in a cool, dry place. If using the spike or universal adapter, apply within 24 hours. Re-seal opened SmartFlex®, store in refrigerator and use within 24 hours.

### Special Instructions

Use under medical supervision

- Not suitable for children under 3 years of age
- Do not mix with other food or add to medications
- Not for parenteral use
- Packed under protective atmosphere
- Food for special medical purposes (balanced diet)

### List of Ingredients

Water, maltodextrin, milk protein (casein, whey), medium chain triglycerides (MCT), vegetable oils (canola, sunflower), dietary fiber/nutritional fiber (pea fiber, acacia gum, Fructo-oligosaccharides, inulin), fish oil, minerals (potassium phosphate, potassium chloride, magnesium carbonate, potassium citrate, sodium citrate, sodium chloride, calcium phosphate, magnesium oxide, ferrous lactate, zinc sulfate, copper gluconate, manganese sulfate, sodium fluoride, chromium chloride, sodium molybdate, potassium iodide, sodium selenite), choline bitartrate, emulsifiers (E471, soy lecithin E472c), vitamins (C, E, niacin, pantothenic acid, B6, thiamin, riboflavin, A, folic acid, K, biotin, D, B12), acidity regulator (E330), stabilizers (E407, E418), antioxidant (E304). Gluten free.

**Allergens:** Milk, fish, soy.

## Nutritional Information

Isosource® 2.0 Protein Fibre		100 ml
<b>ENERGY:</b>	kcal	200
	kJ	840
<b>Fat</b> , of which	g	8.5
	% kcal	38%
– Saturated fatty acids	g	4.4
– MCTs	g	3.4
– Monounsaturated fatty acids	g	2.1
– Polyunsaturated fatty acids	g	0.92
– Omega-3	g	0.42
– Omega-6	g	0.50
<b>Carbohydrates</b> , of which	g	20
	% kcal	40%
– Sugars	g	1.5
– Of which lactose	g	< 0.5
<b>Dietary fiber</b>	g	2.0
	% kcal	2%
– Dietary fiber source		IS50*
<b>Protein</b>	g	10
	% kcal	20%
Protein source		85% casein, 15% whey
<b>MINERALS:</b>		
Sodium	mg	65
	mmol	2.8
Potassium	mg	180
	mmol	4.6
Chloride	mg	80
	mmol	2.3
Calcium	mg	125
	mmol	3.1
Phosphorus	mg	125
	mmol	4.0
Magnesium	mg	33
	mmol	1.4
Iron	mg	2.0
Zinc	mg	1.9
Copper	mg	0.28
Manganese	mg	0.48
Fluoride	mg	0.25
Selenium	µg	11
Chromium	µg	18
Molybdenum	µg	19
Iodine	µg	35
<b>VITAMINS:</b>		
Vitamin A	µg RE	160
Vitamin D	µg	2.6
Vitamin E	mg	4.0
Vitamin K	µg	11
Vitamin C	mg	22
Thiamine	mg	0.30
Riboflavin	mg	0.30
Niacin	mg NE	4.0
B <sub>6</sub>	mg	0.35
Folic acid	µg	60
B <sub>12</sub>	µg	0.70
Biotin	µg	10
Pantothenic acid	mg	1.0
<b>Choline</b>	mg	80
<b>Osmolarity</b>	mOsm/l	395
<b>Water content</b>	g	68

RE = retinol equivalent; NE = niacin equivalent; \* IS50: 50% soluble and 50% insoluble dietary fiber: Pea fiber, acacia gum, fructo-oligosaccharides, inulin.

## Nutrients

### FAT:

The fat content consists of nutritionally superior vegetable oils (canola and sunflower oils), medium chain triglycerides (MCT) and fish oil. The MCT content in the fat is 40%.

	in % of total fat	g / 100 ml
Saturated fatty acids, of which	52	4.4
– MCT	40	3.4
Monounsaturated fatty acids	25	2.1
Polyunsaturated fatty acids, of which	11	0.92
– Omega-3 fatty acids	5	0.42
Ratio omega-6 : omega-3		1.2 : 1

### CARBON HYDRATES:

The main ingredient is **maltodextrin**.

	in % of total carbohydrates	g / 100 ml
Oligo- and polysaccharides	93	19
Sugars (mono- and disaccharides)	7	1.5
Lactose	–	< 0.5

### DIETARY FIBERS:

Patented dietary fiber mix IS50 with 50% soluble and 50% insoluble dietary fibers.

	in % of total fat	g / 100 ml
Soluble	50	1.0
Insoluble	50	1.0

### PROTEIN:

The protein component in Isosource® 2.0 Protein Fibre consists of 15% whey and 85% casein.

### MINERALS AND VITAMINS:

The daily requirement of micronutrients (vitamins and minerals) is covered from 1,500 kcal.