

COLONOVideoscope

### CF-H170L/I

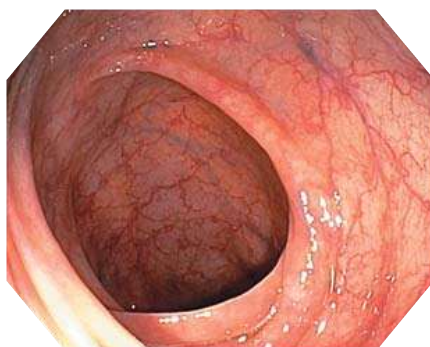
A powerful tool for routine colonoscopy – with HDTV image quality and improved insertability



## Main Features

### HDTV Image Quality

HDTV captures and displays clear images with precise details and accurate colors, helping you to perform more advanced procedures.



### NBI (Narrow Band Imaging)

NBI facilitates observation of capillaries and other structures on the mucosal surface. It helps identify suspicious areas.



### Close Focus

Close focus enables you to obtain an enlarged, close-up image by moving the scope tip as close as 2 mm from the mucosa.

### Variable Stiffness

Variable stiffness helps to avoid re-loop of the endoscope, for example at the sigmoid colon, and also allows the stiffness of the scope to be adjusted on a case-by-case basis in order to meet the unique anatomical needs of each patient or the handling preferences of the physician.

### Water Jet

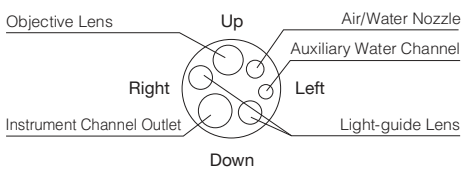
This technology removes mucus and debris inside the colon at the press of a button on the scope or the footswitch unit, providing a clear view.

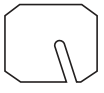

### Waterproof Connector

The newly designed connector is fully submersible and therefore eliminates the need for a water-resistant cap, while minimizing the risk of damage due to accidental immersion.



## Specifications

|                   |   |                         |
|-------------------|---|-------------------------|
| Optical System    | Field of view   | 140°                    |
|                   | Direction of view   | Forward viewing         |
|                   | Depth of field  | 2-100 mm                |
| Insertion Section | Distal end outer diameter   | 12.8 mm                 |
|                   | Distal end enlarged   |                         |
|                   |  |                         |
|                   | Insertion tube outer diameter   | 12.8 mm                 |
|                   | Working length  | L : 1680 mm I : 1330 mm |

|                    |  |   |
|--------------------|--|---|
| Instrument Channel | Channel inner diameter   | 3.7 mm  |
|                    | Minimum visible distance   | 5.0 mm from the distal end  |
| High-frequency     | Direction from which endotherapy accessories enter and exit the endoscopic image |   |
|                    | Cauterization treatment  | Available   |
| Bending Section    | Angulation range   | Up 180°   |
|                    |  | Down 180°   |
|                    |  | Right 160°  |
|                    |  | Left 160°   |
| Total Length       | L : 2005 mm I : 1655 mm  |   |

Specifications, design and accessories are subject to change without any notice or obligation on the part of the manufacturer.