

#### GENERATOR SET SPECIFICATIONS

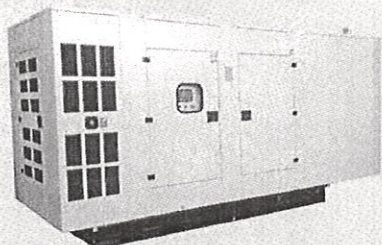
- \* High quality and reliability.
- \* Structurally easy start-up and maintenance.
- \* Heavy duty water cooled diesel engine.
- \* Brushless industrial alternator with AVR.
- \* Steel base frame integrated with high cap. fuel tank.
- \* Anti - vibration mounts.
- \* High temperature, low oil pressure, fuel level alarms and shutdowns.
- \* Engine filled with lubrication oil and coolant mix.
- \* Engine coolant heater.
- \* Fuel level indicator on LCD display of controller.
- \* Complete protection of rotating and hot parts.
- \* Industrial type silencer.
- \* Fuel tank and engine oil heater ( Option ).

#### CONTROL PANEL



- \* Multi - lingual control panel with microprocessor.
- \* Digital LCD - display provides simple, intuitive menu navigation and control of generator set operation.
- \* Key informations displayed via the LCD screen.
- \* Simple push-button control;  
OFF - MANUAL - AUTO - TEST - START
- \* Manual programming on control panel.
- \* Circuit Breaker.
- \* Emergency stop button, light and sound alarm siren.
- \* Battery charger.
- \* Remote control with GSM modem ( option ).

#### SOUNDPROOF CANOPY



- \* Sound attenuated.
- \* Robust and highly corrosion resistant construction.
- \* Excellent access for maintenance through 2-6 doors.
- \* Fully weatherproof.
- \* Base mounted lifting eyes and canopy lifting points.
- \* Non-flammable acoustic foam.
- \* Totally enclosed exhaust silencing system.
- \* Vibration absorber pads.

Manufacturer reserves the right to make changes in generator set specifications without prior notice.

#### OUTPUT RATINGS

Standby Power (ESP)	kVA / kW	110 / 88
Prime Power (PRP)	kVA / kW	100 / 80
Current (ESP)	A	158
Voltage - Frequency	V - Hz	400 / 230 - 50
Phase Quantity - Power Factor	Unit - Cosφ	3 - 0,8

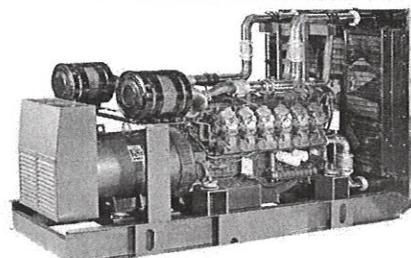
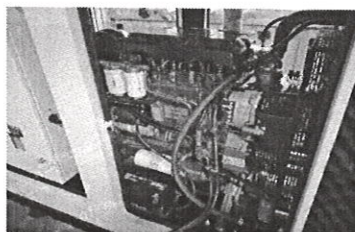
#### ENGINE

Engine Make & Model	BAUDOUIN	4M10G6D0/S
Engine Mechanical Prime Power	kW / (HP)	90 / 121
Air Intake System		Turbocharger & AC
Cylinder Volume	L	4,1
Cylinder Quantity / Type		4 / Line
Bore & Stroke	MM x MM	105 x 118
Compression Ratio		17,5 : 1
Governing Type		Electronic
Engine Speed	RPM	1500
Cooling Method		Water
Cooling System Capacity	L	23,6
Oil Lubrication System Capacity	L	13
Electrical System	V DC	12
Fuel Consumption		
100 % Prime load	L / H	23,2
75 % Prime load	L / H	17,4
50 % Prime load	L / H	11,9
Fuel tank Capacity	L	600

#### ALTERNATOR

Alternator Make & Model	C.STAMFORD	
Alternator Type	Electronic (AVR)	Brushless
Standby Power (ESP)	kVA	110
Voltage - Frequency	V - Hz	400 / 230 - 50
Voltage Regulation		+/- 1.0
Insulation / Protection Class		H / IP 21
Pole Quantity		4

#### DIMENSIONS AND WEIGHTS



Open Type	LxWxH - M / Weight - KG	1,95x1x1,5 / 1350
Canopied Type	LxWxH - M / Weight - KG	2,6x1x1,8 / 1600

Standby Power (ESP): Emergency power under varying electrical load. Overload is not permitted.

Prime Power (PRP): Nominal power under varying electrical load for unlimited hours. 10 % overload is available for a period of 1 hour within 12 hours.

Electrotech Dis Ticaret ve Tekstil Limited Sirketi Istanbul Trakya Serbest Bolge  
Subesi, Ataturk Bulvarı, Erguvan Sokak No: 8/1, Catalca / Istanbul / TURKEY  
Tel: +90 212 4383825-4383856, Gsm: +90 532 5446730, cagrio@electrotech-trade.com

**COPIA CORRESPONDE  
ORIGINALULUI**

