

**OUTDOOR PHOTOMETRIC REPORT**

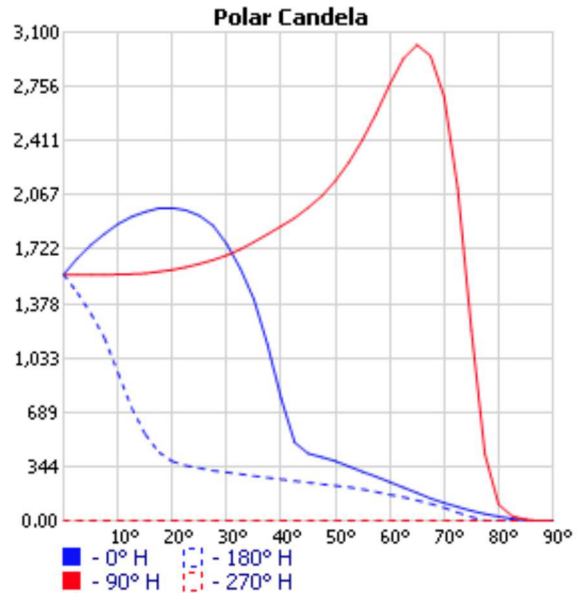
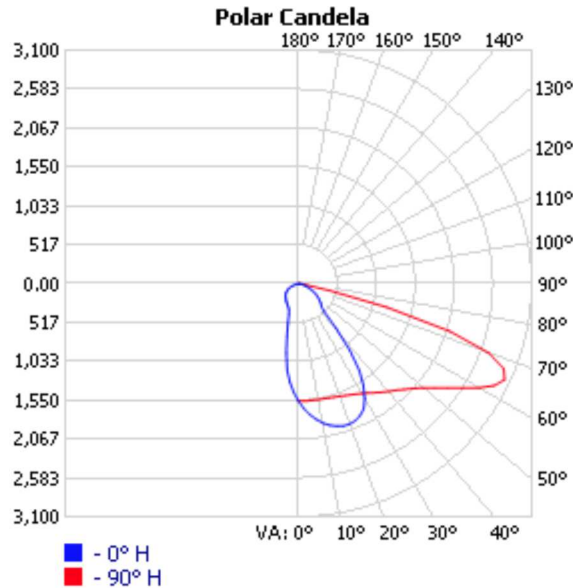
CATALOG: 130782.7L122.110.049



Manufacturer: LUG LIGHT FACTORY  
 Test #: 13150  
 Test Date: 20-03-2024  
 Catalog: 130782.7L122.110.049  
 Description: URBINO S HE ED 4300lm/740 O11 szary C4 II kl. Mod. 049  
 Lamp Catalog: LED 4000K  
 Lamp Output: 1 lamp, rated Lumens/lamp: 4300  
 Input Wattage: 30  
 Luminous Opening: Rectangle (L: 0.18M, W: 0.15M)  
 Max Cd: 3,021.3 at Horizontal: 90°, Vertical: 65°  
 CUTOFF CLASS: Cutoff  
 Roadway Class: SHORT, TYPE I  
 Efficiency: 62.3%

No  
Photo  
Available

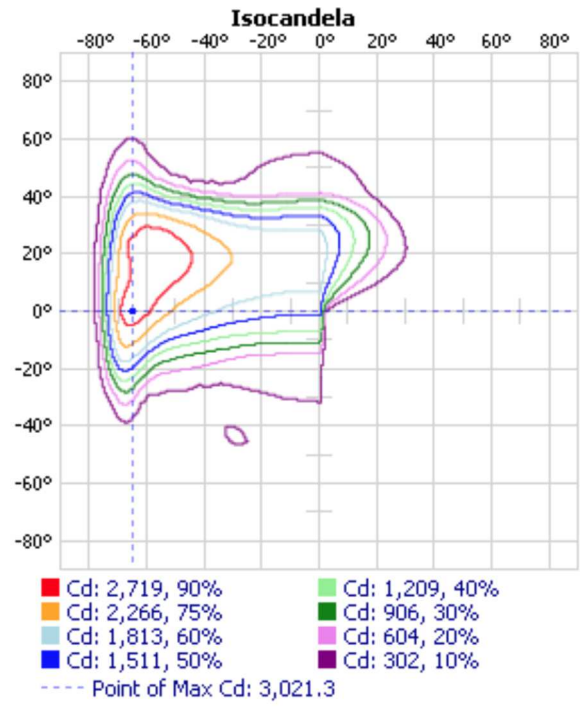
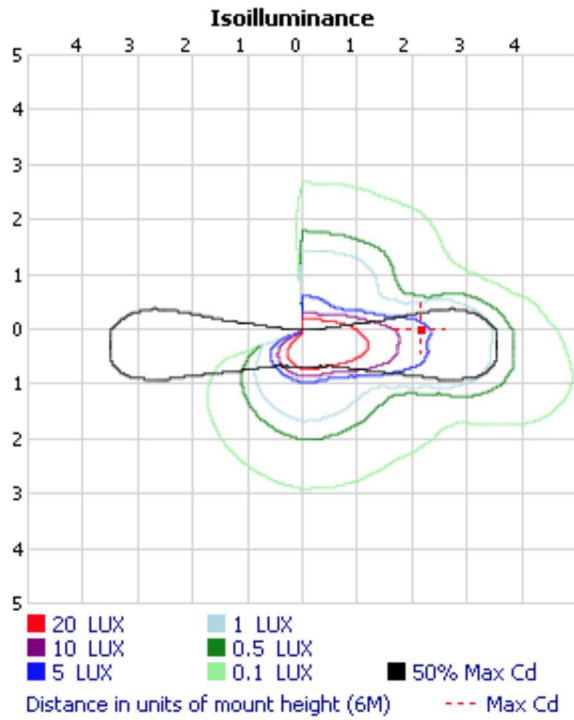
See report notes \*\*



\*\*File does not include sufficient vertical data to properly calculate BUG and LCS upright.  
 \*\*File does not include upper hemisphere data(90-180) and has Cd > 0 at 90° vertical.

Visual Photometric Tool 1.2.46 copyright 2024, Acuity Brands Lighting.

This Photometric report has been generated using methods recommended by the IESNA. Calculations are based on Photometric data provided by the manufacturer, and the accuracy of this Photometric report is dependent on the accuracy of the data provided. End-user environment and application (including, but not limited to, voltage variation and dirt accumulation) can cause actual Photometric performance to differ from the performance calculated using the data provided by the manufacturer. This report is provided without warranty as to accuracy, completeness, reliability or otherwise. In no event will Acuity Brands Lighting be responsible for any loss resulting from any use of this report.



**Zonal Lumen Summary**

Zone	Lumens	% Lamp	% Luminaire
0-30	717.8	16.7%	26.8%
0-40	1,185.6	27.6%	44.3%
0-60	2,105.9	49%	78.6%
60-90	572.9	13.3%	21.4%
0-90	2,678.8	62.3%	100%

**Lumens Per Zone**

Zone	Lumens	% Total
0-10	91.6	3.4%
10-20	248.3	9.3%
20-30	377.9	14.1%
30-40	467.9	17.5%
40-50	466.1	17.4%
50-60	454.2	17.0%
60-70	391.9	14.6%
70-80	171.4	6.4%
80-90	9.5	0.4%