

The slide features decorative elements in the corners: a teal circle with a white crescent pattern in the top-left, a teal shape with a white outline in the top-right, and a teal shape with a white outline and a cluster of teal dots in the bottom-left.

Etichetarea ecologică

Ce se află pe ambalaj?





GREENWASHING

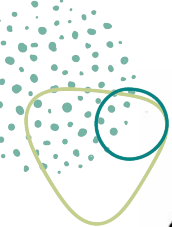


Mărci de calitate autohtone



M

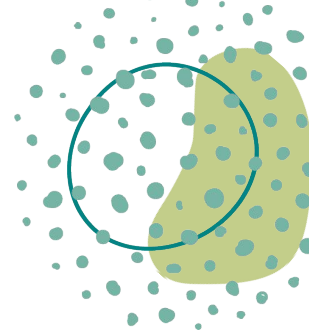
MOLDOVA



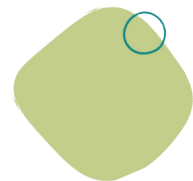
0 2 4

Mărci de calitate autohtone

Marca de conformitate (calitate) - [link](#)



Certificat eco (Agricultura ecologică
Republica Moldova - [link](#)



Certificat agricultură ecologică România -
[link 1](#)

[Link 2](#)





ГОСТ - standardul regional (Rusia) de calitate

[link](#)



*Mărci de calitate ecologică
internationale*



Mărci de calitate eco și organic internaționale

The Organic Logo - [link](#)



- NU se folosesc semințe OMG
- NU se folosesc fertilizatori artificiali
- Resursele naturale și energetice se folosesc rațional
- 95% ingrediente organice

Mărci de calitate eco și organic internaționale

EU Ecolabel - [link](http://www.ecolabel.eu)



Mărci de calitate eco și organic internaționale

Rainforest Alliance - [link](#)



UTZ Certified - [link](#)



Marcaje false, certificate
neexistente!





Nu oferă garanție că produsul nu conține aditivi, coloranți, că nu s-au folosit pesticide pentru a crește produsul etc



Chemical-Free-Life.org

Investigative report finds more "fake organic" food on U.S. shelves:

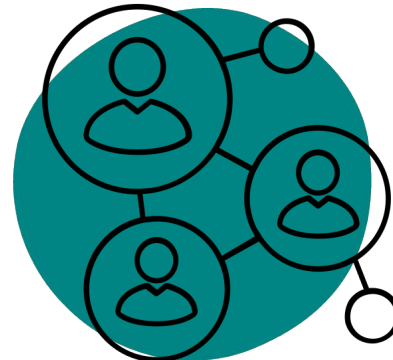
Conventional soybean and corn fumigated with pesticides, then labeled as "USDA Certified Organic" brings in millions of dollars for suppliers and dupes consumers.

*Mărci de calitate etice -
oameni*

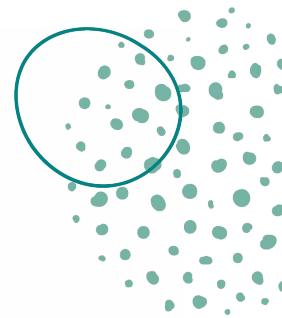


Mărci de calitate etice

Fair trade - [link](#)

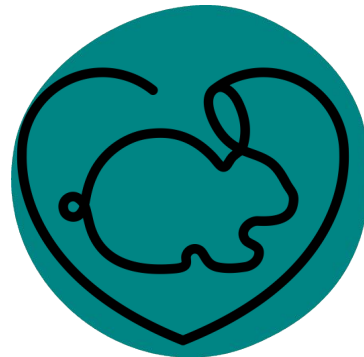
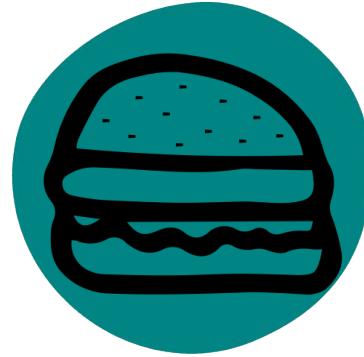


*Mărci de calitate etice.
Animale*



Mărci de calitate etice

Vegan society, V label - [link](#)

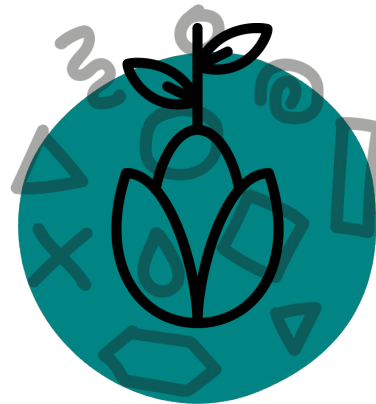


Mărci de calitate etice

Fără cruzime - nu se testează
pe animale (acum) - [link](#)



Organism Modificat Genetic - [link](#)

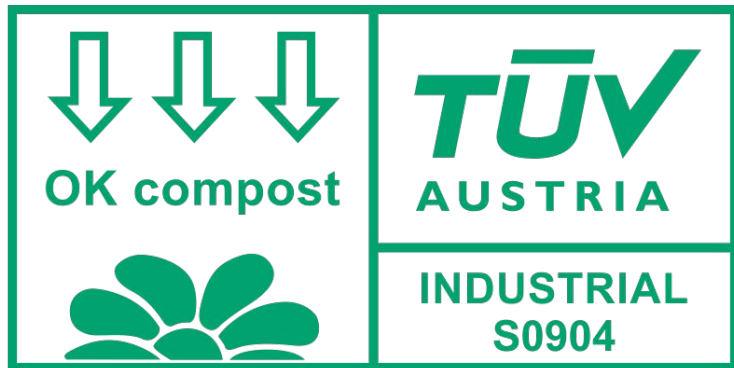


*Marcaje pe ambalaje despre
ambalaje*



Pungi, tacâmuri și ambalaje compostabile

Certificat de compostabilitate - [link](#)



Degradabil?

Compost fierbinte

BIO degradabil?

Hârtie și ambalaje de hârtie

Hârtie din surse responsabile - [link](#)



The mark of responsible forestry

Pulp and Paper Manufacturing Process

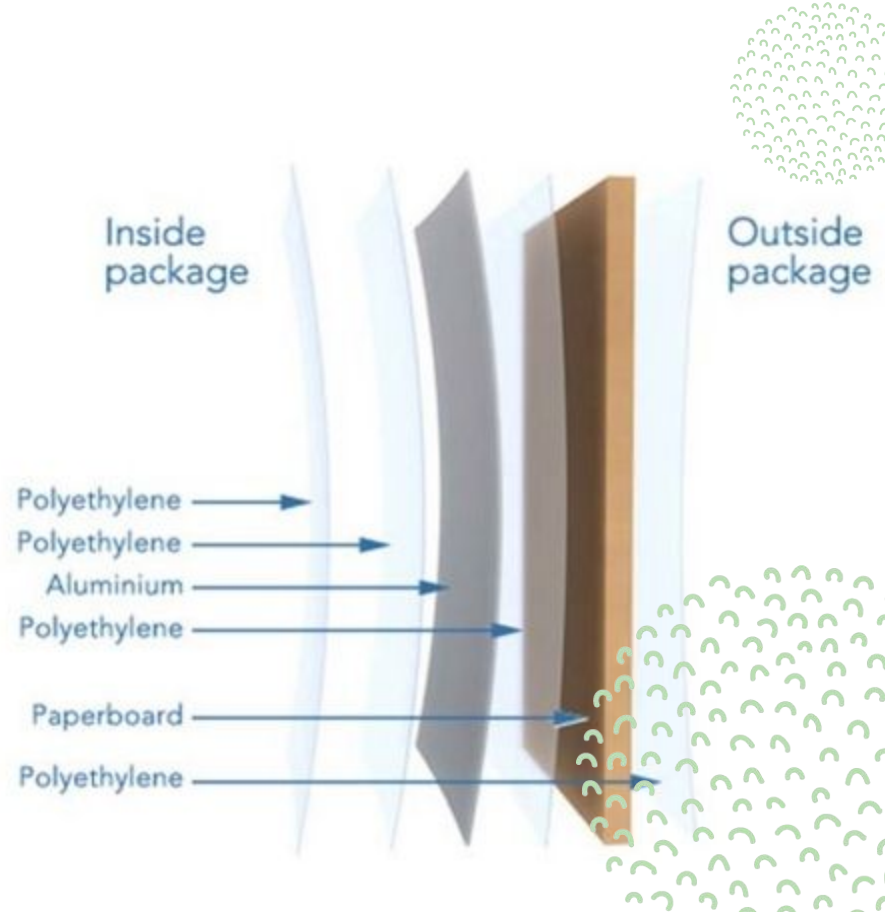


Pulp and Paper Industry

Hârtie și ambalaje de hârtie



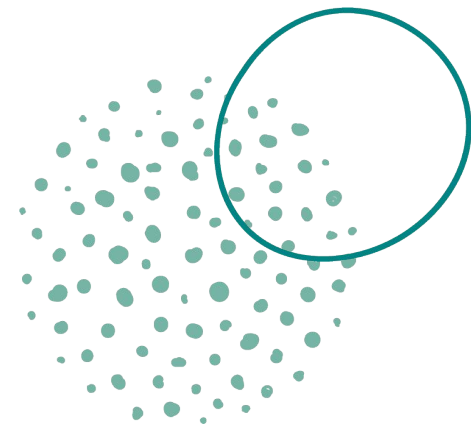
Tetra Pak - ambalaj mixt din plastic, hârtie și aluminiu



Aluminiu și metal



Sticlă 70-79





PETE

polyethylene terephthalate

soft drink bottles, mineral water, fruit juice containers and cooking oil



HDPE

high-density polyethylene

milk jugs, cleaning agents, laundry detergents, bleaching agents, shampoo bottles, washing and shower soaps



PVC

polyvinyl chloride

trays for sweets, fruit, plastic packing (bubble foil) and food foils to wrap the foodstuff



LDPE

low-density polyethylene

crushed bottles, shopping bags, highly-resistant sacks and most of the wrappings



PP

polypropylene

furniture, consumers, luggage, toys as well as bumpers, lining and external borders of the cars



PS

polystyrene

toys, hard packing, refrigerator trays, cosmetic bags, costume jewellery, audio cassettes, CD cases, vending cups



OTHER

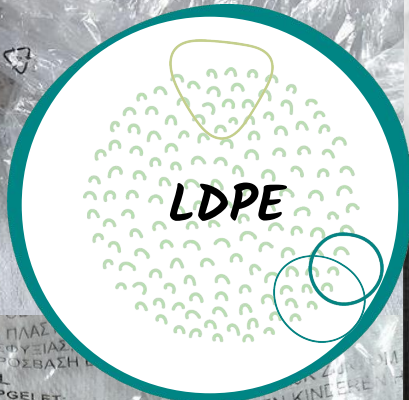
other plastics, including acrylic, polycarbonate, polyactic fibers, nylon, fiberglass

an example of one type is a polycarbonate used for CD production and baby feeding bottles

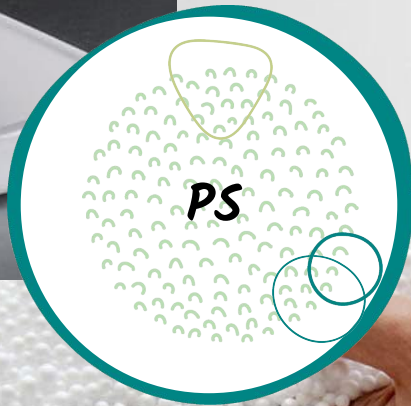


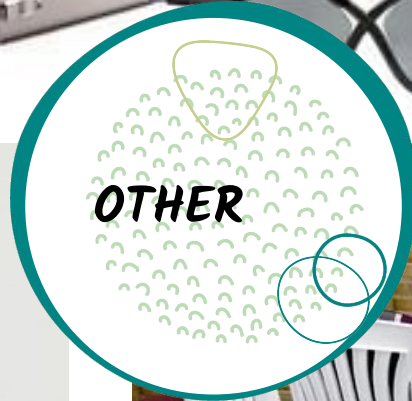








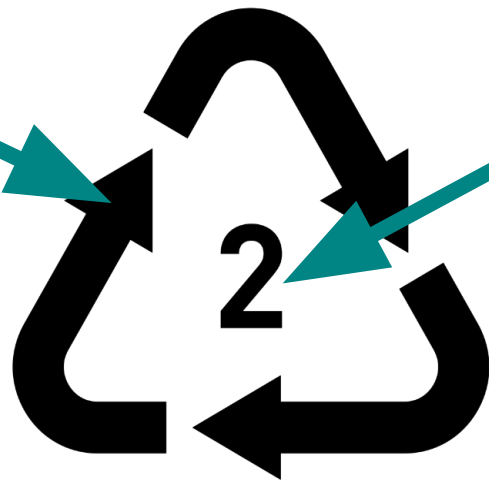




Cum identificăm tipul de plastic?

1. Găsim pe ambalaj
TRIUNGHIUL RECICLĂRII
(cel mai des pe fundul
recipientului)

2. Găsim cifra corespunzătoare,
în interiorul triunghiului, sau
direct sub triunghi. TEP
reciclează doar tipurile 2 și 5.



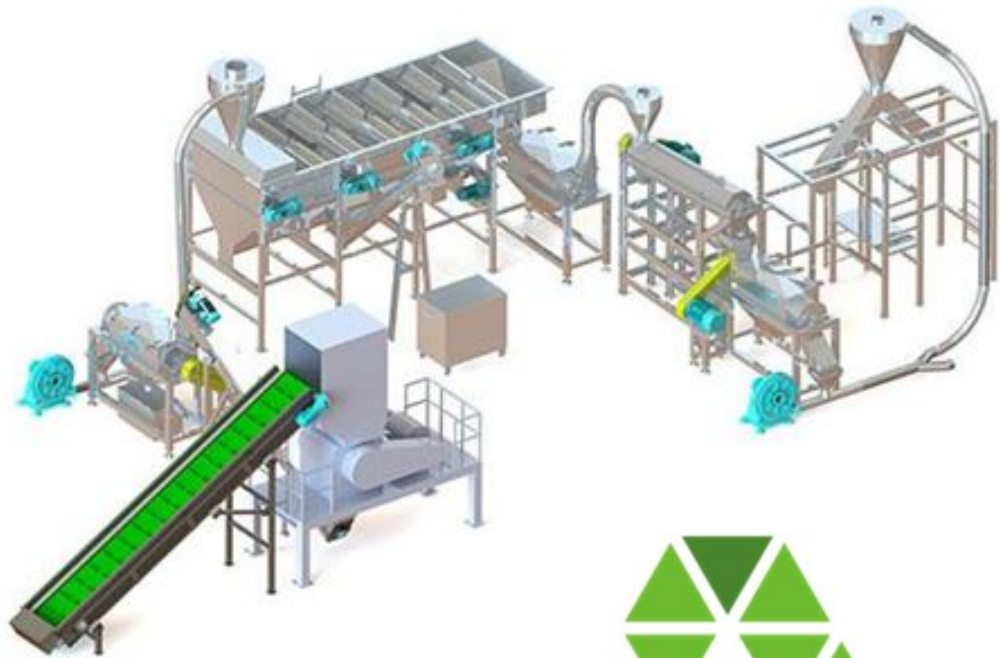
HDPE

IMPORTANT!
Dacă cifra nu este direct
în apropierea sau în
interiorul triunghiului,
aceasta nu indică tipul de
plastic !

3. Găsim abrevierea
corespunzătoare, direct sub
triunghi, sau uneori lângă
triunghi. TEP reciclează doar
tipurile 2 - HDPE (mai notat și
PE sau PE-HD) și 5 - PP.

Ambalajele - în tomberonul potrivit!





The background is a vibrant teal color. It features several large, organic, rounded shapes in shades of light green and pale blue. In the upper right quadrant, there is a circular area filled with a pattern of small, white, crescent-shaped marks. On the left side, a vertical line of small white dots is visible. The overall aesthetic is modern and eco-friendly.

Echipa EcoVisio