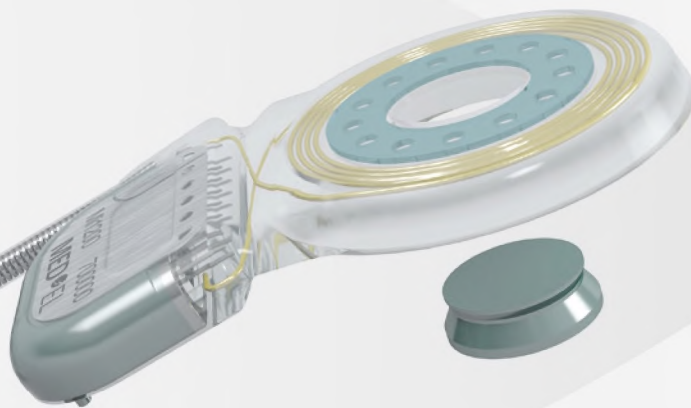


SYNCHRONY Implant

Product Catalogue



hearLIFE

Safety Above All Else

SYNCHRONY Cochlear Implant

With SYNCHRONY, your patients will have peace of mind knowing they have the only implant that delivers unmatched MRI safety*, outstanding reliability, and exceptional hearing quality.

Smallest Titanium Implant

As the smallest and lightest titanium cochlear implant with an exceptionally thin housing, SYNCHRONY is ideal for minimally invasive surgical techniques.

Revolutionary Magnet Design

The rotatable, self-aligning magnet delivers the highest MRI safety of any cochlear implant—enabling 3.0 T MRI without surgical magnet removal.

Proven Stability

Optional titanium fixation pins secure the placement of the implant for outstanding stability and long-term reliability.

Atraumatic Electrode Arrays

Flexible arrays better preserve delicate cochlear structures while enabling Complete Cochlear Coverage for superior hearing performance.

* Recipients with a SYNCHRONY Cochlear Implant may be safely MRI scanned at 0.2, 1.0, 1.5, and 3.0 Tesla following the conditions detailed in the instructions for use. Visit medel.com/isi for Medical Procedures Manual and other safety information for MED-EL implants.

SYNCHRONY Implant



Mi1200 SYNCHRONY Cochlear Implant

Includes SYNCHRONY Implant Template ■

Mi1200 Implant Template

Included with implant. Used to evaluate the optimal position of the CI. 09799

with FLEX Series Electrode Array

The softest and most flexible electrode array designed for Structure Preservation.

FLEXSOFT	09402
FLEX28	09400
FLEX24	09404
FLEX20	30896

with FORM Series Electrode Array

Ideal for malformed cochleae.
Features SEAL technology for better control of CSF leakage.

FORM24	30894
FORM19	30892

with CLASSIC Series Electrode Array

Features wave-shaped wires and double electrode contacts.

STANDARD	09395
MEDIUM	09408
COMPRESSED	09398

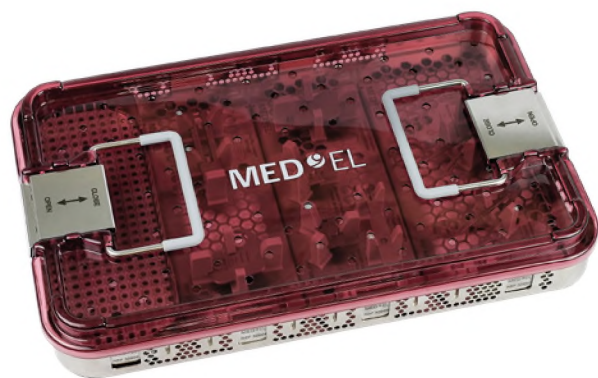
with ABI Electrode Array

Designed for individuals with hearing loss due to a non-functioning auditory nerve.

ABI	09406
-----	-------

CI Surgical Instrument Tray

The CI Surgical Instrument Tray is a collection of reusable tools for implantation of all current titanium MED-EL cochlear implants. The tools should be sterilized before use.



CI Surgical Instrument Tray 33117

▲ ⚙	CI Surgical Instrument Tray includes:	
	1 SONATA Implant Template	05064
	1 PIN Drill Guide SI	09906
	1 Processor Template	01557
	1 Skin Flap Gauge 6	03543
	1 Surgical Claw Angled	00284
	1 Micro Forceps Right-Angled	05777
	1 Micro Forceps Left-Angled	05778



Inlay 1 Insertion Tools 32954

▲ ⚙	1 Surgical Claw Angled	00284
	1 Micro Forceps Angled Set	05761
	1 Tray Inlay 1	



Inlay 2 Planning Tools 32955

▲ ⚙	1 Skin Flap Gauge 6	03543
	1 Processor Template	01557
	1 Tray Inlay 2	



Inlay 3 Mat 32956

▲ ⚙	1 Tray Inlay 3	
-----	----------------	--



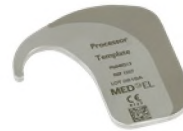
Inlay 5 Templates 32958

▲ ⚙	1 PIN Drill Guide SI	09906
	1 SONATA Implant Template	05064
	1 Tray Inlay 5	



PIN Drill Guide SI*

▲ ♻️
Small incision (SI) drilling template for the fixation pins of the SYNCHRONY PIN. 09906



Processor Template

▲ ♻️
Used for surgical planning to position the implant at the correct distance from the ear. 01557



Skin Flap Gauge 6

▲ ♻️
Used to evaluate the thickness of the skin flap covering the implant. 03543



SONATA Implant Template

Used to assess the size and the position of the implant on the skull. 05064



Micro Forceps Right-Angled

▲ ♻️
Used to grip, hold, and insert the electrode. 05777



Micro Forceps Left-Angled

▲ ♻️
Used to grip, hold, and insert the electrode. 05778



Micro Forceps Set

▲ ♻️
Includes:
1 Micro Forceps Right-Angled 05777
1 Micro Forceps Left-Angled 05778



Surgical Claw Angled

▲ ♻️
Used to position and insert the electrode array into the cochlea. 00284

Additional Implant Tools

These additional tools can be used for implanting SYNCHRONY, but are not included in the CI Surgical Instrument Tray.



Mi1200 Implant Template PIN

■ Used to evaluate the optimal position of the CI with PINs. It is included with the SYNCHRONY PIN Implant.

09800



Mi1200 Implant Template

■ Used to evaluate the optimal position of the CI. It is included with the SYNCHRONY Implant.

09799



SoftGrip Forceps

▲ ♻ Used to grip, hold and insert MED-EL electrodes into the cochlea.

58326



SoftGrip Forceps SR

▲ ♻ Alternative tool to SoftGrip Forceps (58326). Used to grip, hold and insert MED-EL electrodes into the cochlea. The SoftGrip Forceps SR have a self-retaining design to hold the electrodes without any external force.

58393



Surgical Claw Straight

▲ ♻ Alternative tool to Surgical Claw Angled (00284). Used to position and insert the electrode array into the cochlea.

07711



Fixation Clip

■ Implantable surgical accessory that provides additional fixation of the electrode lead on the bony bridge.

09917



Insertion Electrodes

■ Used to establish whether the cochlear lumen is obstructed or if it is freely accessible for the preferred electrode array.

FLEXSOFT	08255	STANDARD	08254
FLEX28	08348	MEDIUM	08256
FLEX26	36633	COMPRESSED	08258
FLEX24	08257		



Insertion Test Device

■ Has a stopper at 18 mm and 5 pairs of opaque markers to help determine insertion depth up to a maximum of 18 mm.

02081

Magnet Tool Kits

SYNCHRONY features a secure removable implant magnet. The Magnet Tool Kit and Magnet Replacement Kit provide all the necessary components for magnet removal and replacement.



Magnet Tool Kit

09734



Provides the surgical tools needed for SYNCHRONY magnet removal/replacement and should be used in conjunction with the Magnet Replacement Kit.

Includes:

- 1 Magnet Insertion Tool
- 1 Magnet Removal Tool

Magnet Replacement Kit

09693



Provides the magnet components needed for SYNCHRONY magnet removal/replacement and should be used in conjunction with the Magnet Tool Kit.

Includes:

- 1 Non-Magnetic Spacer (Purple)*
- 1 Replacement Magnet (Blue)*

*Not sold separately.



Magnet Insertion Tool

08399



For insertion of Non-Magnetic Spacer and Replacement Magnet.



Magnet Removal Tool

08400



For removal of implant magnet and Non-Magnetic Spacer.

MED-EL recommends replacing an implant magnet always with a magnet of the original type. Nevertheless, in case of a medical reason, selecting an alternative replacement magnet may be necessary. For further information please contact your MED-EL representative.

MED-EL Offices Worldwide

AMERICAS

Argentina

medel@medel.com.ar

Brazil

office@br.medel.com

Canada

officecanada@medel.com

Colombia

office-colombia@medel.com

Mexico

office-mexico@medel.com

United States

implants@medelus.com

ASIA PACIFIC

Australia

office@medel.com.au

China

office@medel.net.cn

Hong Kong

office@hk.medel.com

India

implants@medel.in

Indonesia

office@id.medel.com

Japan

office-japan@medel.com

Malaysia

office@my.medel.com

Philippines

office@ph.medel.com

Singapore

office@sg.medel.com

South Korea

office@kr.medel.com

Thailand

office@th.medel.com

Vietnam

office@vn.medel.com

EMEA

Austria

office@at.medel.com

Belgium

office@be.medel.com

Denmark

nordic@medel.com

Finland

office@fi.medel.com

France

office@fr.medel.com

Germany

office@medel.de

Italy

ufficio.italia@medel.com

Netherlands

office@nl.medel.com

Norway

norge@medel.com

Portugal

office@pt.medel.com

South Africa

customerserviceZA@medel.com

Spain

office@es.medel.com

Sweden

nordic@medel.com

Switzerland

office-ch@medel.com

Turkey

medelturkey@medel.com

United Arab Emirates

office@ae.medel.com

United Kingdom

customerservice@medel.co.uk

24642 r6.0