



# 3-LUMEN PAPILOTOME

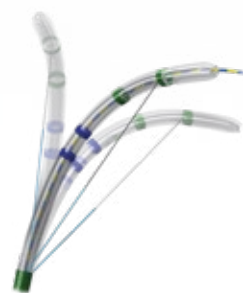
## FOR PRECISE WIRE GUIDANCE AND CANNULATION

Positioning, cannulation and resection are the decisive features of a safe and successful papillotomy. The 3-lumen papillotome from MICRO-TECH meets these requirements in every way: Emerging from the working channel in the correct position, the atraumatic tip, tapered to 5 Fr, supports cannulation and the resection is done reliably at the "11 o'clock" marker. Maximum safety during resection

is also provided by optional proximal insulation of the cutting wire. The three lumens for cutting wire, guide wire and contrast media provide for a high level of safety and efficient contrast injection. Thanks to the ergonomic 3-ring grip handle, this papillotome is highly user-friendly and easy to control.

### SPECIFIC CHARACTERISTICS

- 3 lumen for guide wire, cutting wire and contrast injection
- Optional insulation of proximal cutting wire
- Cutting direction at 11 o'clock
- Filiform tip, tapered to 5 Fr
- Working length: 2.000 mm
- Outer diameter: 2.5 mm
- Guide wire compatible fully mobile up to 0.035 inch



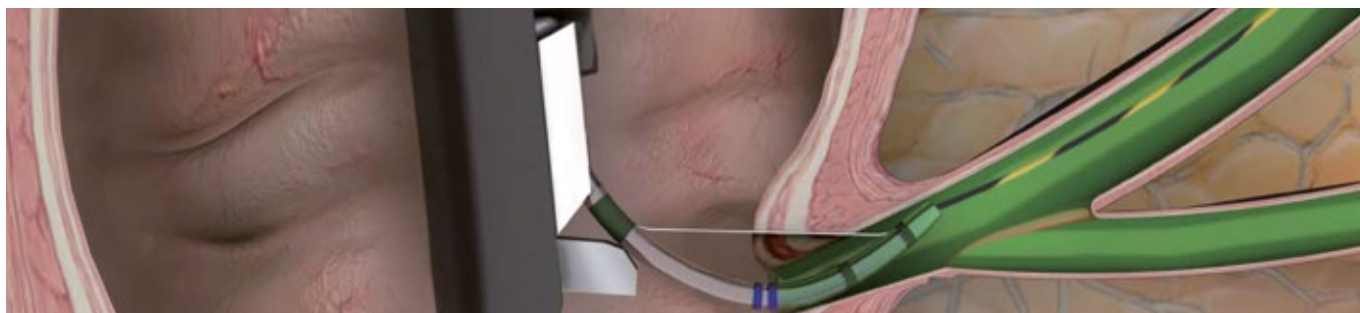
Precise adjustment function



Tip: Precut



Tip: Needle knife



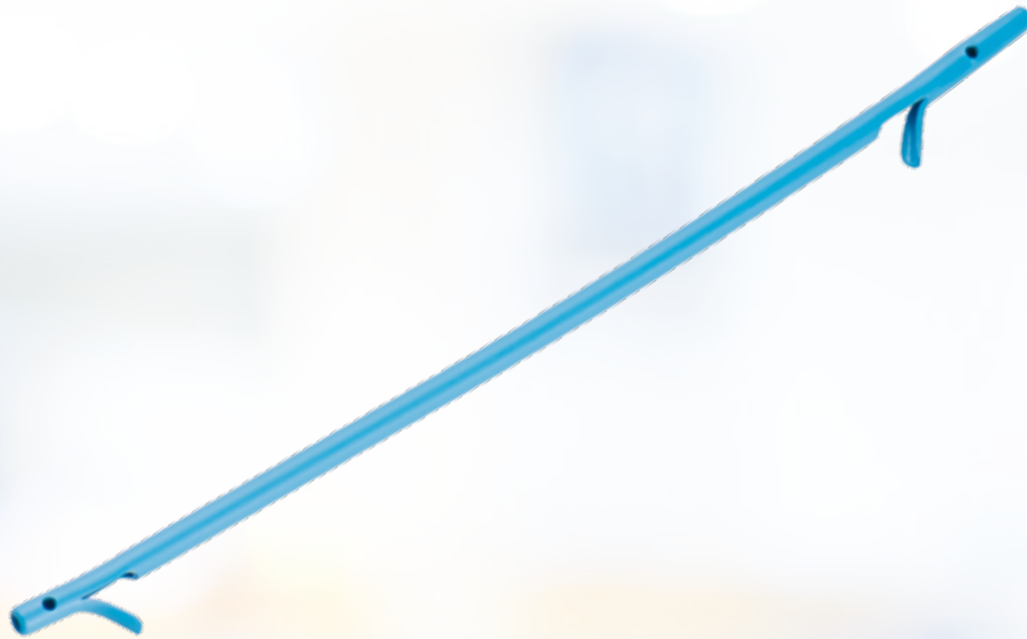
## SPECIFICATIONS

REF	Tip length mm	Cutting wire length mm	Partly insulated cutting wire	Preloaded guide wire	Ø working channel mm
<b>PAPILLOTOME, 3-LUMEN, CONE-TIP</b>					
DSP-30020-111111	0	20	No	No	2.8
DSP-30020-111211	0	20	Yes	No	2.8
DSP-30025-111111	0	25	No	No	2.8
DSP-30025-111211	0	25	Yes	No	2.8
DSP-30030-111111	0	30	No	No	2.8
DSP-30030-111211	0	30	Yes	No	2.8
DSP-30220-111111	2	20	No	No	2.8
DSP-30220-111211	2	20	Yes	No	2.8
DSP-30225-111111	2	25	No	No	2.8
DSP-30225-111211	2	25	Yes	No	2.8
DSP-30230-111111	2	30	No	No	2.8
DSP-30230-111211	2	30	Yes	No	2.8
DSP-30520-111111	5	20	No	No	2.8
DSP-30520-111211	5	20	Yes	No	2.8
DSP-30525-111111	5	25	No	No	2.8
DSP-30525-111211	5	25	Yes	No	2.8
DSP-30530-111111	5	30	No	No	2.8
DSP-30530-111211	5	30	Yes	No	2.8
DSP-30020-111121	0	20	No	Yes	2.8
DSP-30020-111221	0	20	Yes	Yes	2.8
DSP-30025-111121	0	25	No	Yes	2.8
DSP-30025-111221	0	25	Yes	Yes	2.8
DSP-30030-111121	0	30	No	Yes	2.8
DSP-30030-111221	0	30	Yes	Yes	2.8
DSP-30220-111121	2	20	No	Yes	2.8
DSP-30220-111221	2	20	Yes	Yes	2.8
DSP-30225-111121	2	25	No	Yes	2.8
DSP-30225-111221	2	25	Yes	Yes	2.8
DSP-30230-111121	2	30	No	Yes	2.8
DSP-30230-111221	2	30	Yes	Yes	2.8
DSP-30520-111121	5	20	No	Yes	2.8
DSP-30520-111221	5	20	Yes	Yes	2.8
DSP-30525-111121	5	25	No	Yes	2.8
DSP-30525-111221	5	25	Yes	Yes	2.8
DSP-30530-111121	5	30	No	Yes	2.8
DSP-30530-111221	5	30	Yes	Yes	2.8
<b>PAPILLOTOME, 3-LUMEN, NEEDLE KNIFE</b>					
DSP-30505-121111	0	5	No	No	2.8
DSP-30505-121211	0	5	Yes	No	2.8
DSP-30507-121111	0	7	No	No	2.8
DSP-30507-121211	0	7	Yes	No	2.8

Recommended guide wires 0.035": MTN-BM 89/45-A (straight), 600358-5 (straight), 600359-5 (J-Tip)

Recommended guide wires 0.025": MTN-BM 63/26-A (straight) and 600384-5 (straight)

Packaging unit: 2 pieces



# PLASTIC BILE DUCT STENTS

## MAXIMUM DRAINAGE, MAXIMUM HOLD

MICRO-TECH offers a comprehensive range of plastic stents for short and medium-term drainage in the bile duct. The stents are available in different shapes, lengths and diameters. Thus, the ideal stent is available for each indication. The high-quality PE-/PTFE-material of the stents ensures reliable drainage and adapts optimally

to the anatomy of the patient. Flaps at the ends of the stents also ensure a secure hold with minimal migration. For rapid and safe implantation, the stents are available both individually and on pre-loaded systems. In addition, MICRO-TECH also offers introduction-systems in all relevant sizes.

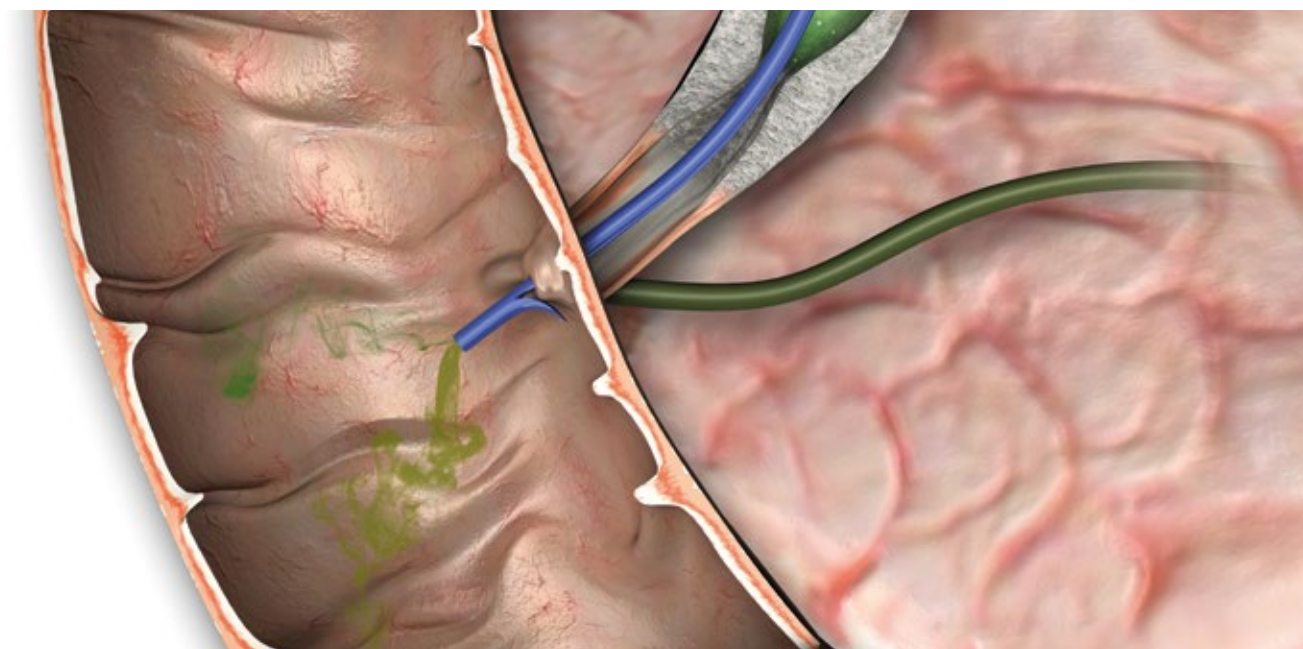
### SPECIFIC CHARACTERISTICS

- Different shapes: straight, curved, angled, pigtail, double-pigtail
- Optimum flow rate
- Ideal adaptation to anatomy
- Safe hold, minimal migration
- Available single-packed or pre-loaded on introduction-system
- High x-ray visibility



Pre-loaded stent

System handle



## SPECIFICATIONS

### STENT STRAIGHT



- Shape: straight
- 2 flaps
- 2 side-holes
- X-ray visible
- Material: PE

Working length	Diameter bile duct prosthesis			
	7 Fr.	8.5 Fr.	10 Fr.	11.5 Fr.
5 cm	BPDS-31114-0705	BPDS-31114-0805	BPDS-31114-1005	BPDS-31114-1105
6 cm	BPDS-31114-0706	BPDS-31114-0806	BPDS-31114-1006	BPDS-31114-1106
7 cm	BPDS-31114-0707	BPDS-31114-0807	BPDS-31114-1007	BPDS-31114-1107
8 cm	BPDS-31114-0708	BPDS-31114-0808	BPDS-31114-1008	BPDS-31114-1108
9 cm	BPDS-31114-0709	BPDS-31114-0809	BPDS-31114-1009	BPDS-31114-1109
10 cm	BPDS-31114-0710	BPDS-31114-0810	BPDS-31114-1010	BPDS-31114-1110
11 cm	BPDS-31114-0711	BPDS-31114-0811	BPDS-31114-1011	BPDS-31114-1111
12 cm	BPDS-31114-0712	BPDS-31114-0812	BPDS-31114-1012	BPDS-31114-1112
13 cm	BPDS-31114-0713	BPDS-31114-0813	BPDS-31114-1013	BPDS-31114-1113
14 cm	BPDS-31114-0714	BPDS-31114-0814	BPDS-31114-1014	BPDS-31114-1114
15 cm	BPDS-31114-0715	BPDS-31114-0815	BPDS-31114-1015	BPDS-31114-1115

## INTRODUCER-SYSTEMS WITHOUT STENT

### SPECIFICATIONS



- One step introducer-system
- X-ray visible

New: Extended guide catheter

REF	Ø catheter	Guide catheter	Introducer length
BPDI-0740/22	7 Fr.	40 cm	220 cm
BPDI-0840/22	8.5 Fr.	40 cm	220 cm
BPDI-1040/22	10 Fr.	40 cm	220 cm
BPDI-1140/22	11.5 Fr.	40 cm	220 cm

## INTRODUCER-SYSTEMS WITH PRE-LOADED STENT



- One step introducer-system
- X-ray visible

### SPECIFICATIONS

#### STENT STRAIGHT



- Shape: straight
- 2 flaps
- 2 side-holes
- X-ray visible
- Material: PE

REF	Ø catheter	Stent working/ total length	Introducer length
BPDS-31114-0805/22	8.5 Fr.	5 / 7 cm	220 cm
BPDS-31114-0807/22	8.5 Fr.	7 / 9 cm	220 cm
BPDS-31114-0809/22	8.5 Fr.	9 / 11 cm	220 cm
BPDS-31114-0811/22	8.5 Fr.	11 / 13 cm	220 cm
BPDS-31114-1005/22	10 Fr.	5 / 7 cm	220 cm
BPDS-31114-1007/22	10 Fr.	7 / 9 cm	220 cm
BPDS-31114-1009/22	10 Fr.	9 / 11 cm	220 cm
BPDS-31114-1011/22	10 Fr.	11 / 13 cm	220 cm

### SPECIFICATIONS

#### STENT CURVED



- Shape: 15° curved
- 2 flaps
- 2 side-holes
- X-ray visible
- Material: PE

REF	Ø catheter	Stent working/ total length	Introducer length
BPDS-32114-0805/22	8.5 Fr.	5 / 7 cm	220 cm
BPDS-32114-0807/22	8.5 Fr.	7 / 9 cm	220 cm
BPDS-32114-0809/22	8.5 Fr.	9 / 11 cm	220 cm
BPDS-32114-0811/22	8.5 Fr.	11 / 13 cm	220 cm
BPDS-32114-1005/22	10 Fr.	5 / 7 cm	220 cm
BPDS-32114-1007/22	10 Fr.	7 / 9 cm	220 cm
BPDS-32114-1009/22	10 Fr.	9 / 11 cm	220 cm
BPDS-32114-1011/22	10 Fr.	11 / 13 cm	220 cm