

EMR

ClearGrasp Snare



Cold
(0.2mm 1x7)



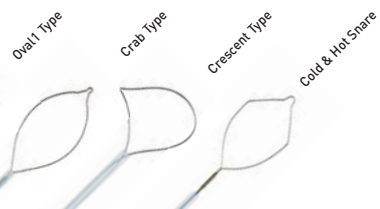
Soft
(0.3mm 1x7)



Stiff
(0.4mm 1x7)



Moderato
(0.4mm 3x3)



FEATURE & BENEFITS

(1) Built-in saline Irrigation port

- This product has the saline irrigation port. Using it, the users do not need to exchange accessories to flush the saline or water to detect the bleeding site.

(2) Looping rotation with the handle at 1:1 ratio

- The loop of this product can be rotated at 1:1 ratio with the handle, and the users can perform the EMR procedures more easily.

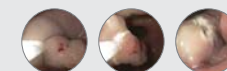
(3) Various shapes and sizes of loop (6mm-30mm)

- The users can select the shape and diameter of loop according to their needs.
- Cold Snare Polypectomy can be performed by using our small size snare (6-10mm)

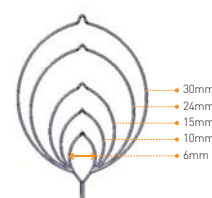
(4) Cold & Hot Snare



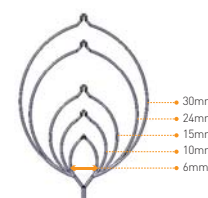
- Shield shape enables effective cold snare Polypectomy.
- Covering both Hot and Cold Snare Polypectomy.
- 6mm loop size facilitates the resection of diminutive polyps (size ≤5mm)
- Irrigation Port helps control bleeding during polypectomy.



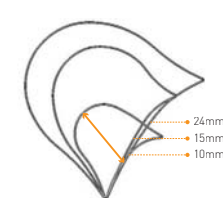
OVAL 1 TYPE



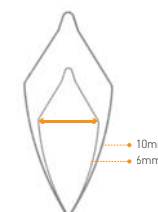
CRAB TYPE



CRESCENT TYPE



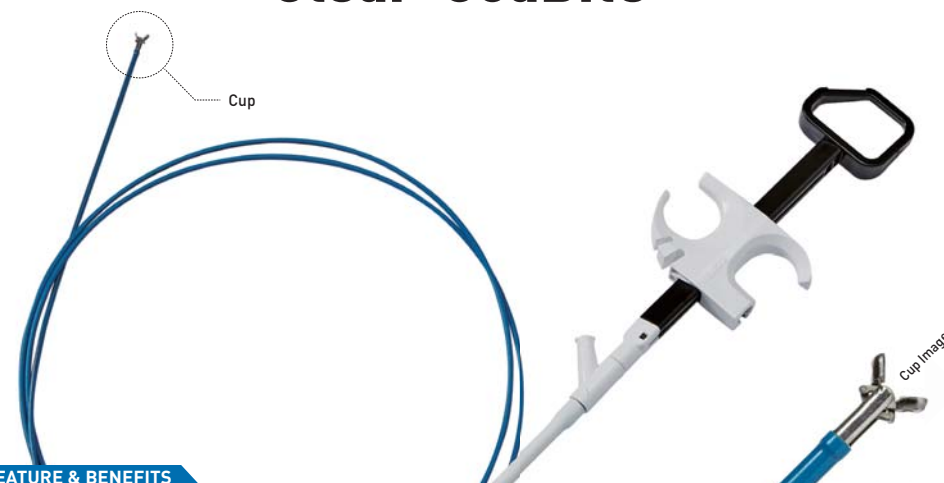
COLD TYPE



SPECIFICATION

Type	Model	Type of Retation	Loop Size	Loop Stiffness	Sheath O.D	Working Length	Number of Use	Validity of Sterilization
Oval1	FM-ESN006(2400)(Soft)	Non-Rotation	6mm	Soft	ø2.4mm	2,400mm	Single Use Only	3 years
	FM-ESN006(2400)(Stiff)			Stiff				
	FM-ESN006(2400)(Moderato)			Moderato				
	FM-ES0006(2400)(Soft)	Rotation	6mm	Soft				
	FM-ES0006(2400)(Stiff)			Stiff				
	FM-ES0006(2400)(Moderato)			Moderato				
	FM-ESN004(2400)(Soft)	Non-Rotation	10mm	Soft				
	FM-ESN004(2400)(Stiff)			Stiff				
	FM-ESN004(2400)(Moderato)			Moderato				
	FM-ES0004(2400)(Soft)	Rotation	10mm	Soft				
	FM-ES0004(2400)(Stiff)			Stiff				
	FM-ES0004(2400)(Moderato)			Moderato				
	FM-ESN005(2400)(Soft)	Non-Rotation	15mm	Soft				
	FM-ESN005(2400)(Stiff)			Stiff				
	FM-ESN005(2400)(Moderato)			Moderato				
	FM-ES0005(2400)(Soft)	Rotation	15mm	Soft				
	FM-ES0005(2400)(Stiff)			Stiff				
	FM-ES0005(2400)(Moderato)			Moderato				
	FM-ESN002(2400)(Soft)	Non-Rotation	24mm	Soft				
	FM-ESN002(2400)(Stiff)			Stiff				
	FM-ESN002(2400)(Moderato)			Moderato				
Crab	FM-ES0002(2400)(Soft)	Rotation	24mm	Soft				
	FM-ES0002(2400)(Stiff)			Stiff				
	FM-ES0002(2400)(Moderato)			Moderato				
	FM-ESN003(2400)(Soft)	Non-Rotation	30mm	Soft				
	FM-ESN003(2400)(Stiff)			Stiff				
	FM-ESN003(2400)(Moderato)			Moderato				
Crescent	FM-ES0003(2400)(Soft)	Rotation	30mm	Soft				
	FM-ES0003(2400)(Stiff)			Stiff				
	FM-ES0003(2400)(Moderato)			Moderato				
	FM-ESN006(Crab)(2400)(Stiff)	Non-Rotation	6mm	Stiff				
	FM-ES0006(Crab)(2400)(Stiff)	Rotation	10mm					
	FM-ESN004(Crab)(2400)(Stiff)	Non-Rotation	15mm					
Cold	FM-ES0005(Crab)(2400)(Stiff)	Non-Rotation	24mm					
	FM-ESN002(Crab)(2400)(Stiff)	Non-Rotation	30mm					
	FM-ESN003(Crab)(2400)(Stiff)	Non-Rotation	10mm					
	FM-ES0003(Crab)(2400)(Stiff)	Rotation	10mm					
	Crescent	FM-ES0004(Crecent)(2400)	Non-Rotation	10mm	Soft			
		FM-ES0004(Crecent)(2400)	Rotation	10mm	Stiff			
FM-ES0005(Crecent)(2400)		Non-Rotation	15mm	Soft				
FM-ES0005(Crecent)(2400)		Rotation	15mm	Stiff				
FM-ES0002(Crecent)(2400)		Non-Rotation	24mm	Soft				
FM-ES0002(Crecent)(2400)		Rotation	24mm	Stiff				
Cold	FM-ESN006(Cold)(2400)	Non-Rotation	6mm	Soft (0.2mm)				
	FM-ES0006(Cold)(2400)	Rotation	6mm					
	FM-ESN004(Cold)(2400)	Non-Rotation	10mm					
	FM-ES0004(Cold)(2400)	Rotation	10mm					

Clear-CoaBite



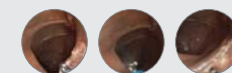
FEATURE & BENEFITS

(1) Built-in Saline Irrigation Port

- This product has the saline Irrigation port, This could let the users don't need to change snare to flush saline or water for detecting bleeding site.

(2) Improving usability

- By shortening the conductive length at the distal end of sheath from 9mm to 4mm, operators do not need to focus out in order to take the angle again.



SPECIFICATION

SPECIFICATION									
Model	Shape of Cup	Cup(Jaw)O.D	Sheath O.D	Working Length	Compatible Endoscopes		Number of Use	Validity of Sterilization	
					Length	Channel Inner Diameter			
FM-EB0001	Oval	ø1.72mm	ø2.3mm	1,600mm	Max. 1,100mm	Min. ø2.8mm	Single Use Only	3 years	
FM-EB0002				2,400mm	Max. 1,800mm				
FM-EB0003		ø2.3mm		1,600mm	Max. 1,100mm				
FM-EB0004				2,400mm	Max. 1,800mm				