

COMPANY
BOLLARD
UP&DOWN
BULKHEAD
FLOODLIGHT
IN-GROUND
BRICKLIGHT
GARDEN
URBAN CLASSIC
URBAN MODERN
HIGH-BAY
POST
LAMP
REFERENCES

VIVI 500 E27

GRAND SIZE



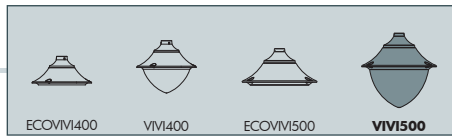
Modern luminaries made of shockproof resin material, UV-rays stabilized, rust and corrosion-free. Suitable for post top, wall and hanging installation. Provided with high temperature resistant ceiling suitable for horizontal bulb fixation and with aluminum reflector to optimize the light distribution. Designed according to the international regulations against light pollution (standard UNI 10819). Insulation class II, Protection rating IP65.

Diffusore moderno realizzato in resina antiurto, stabilizzato ai raggi UV, inattaccabile da ruggine e corrosione. Idoneo per il montaggio a palo, a sospensione o a parete. Fornito con soffitto ad alta resistenza al calore idoneo per il fissaggio orizzontale della lampadina e provvisto di parabola riflettente in alluminio per direzionare il flusso luminoso. Progettato in ottemperanza alle norme internazionali contro l'inquinamento luminoso (standard UNI 10819). Classe di isolamento II, grado di protezione IP65.



V60.000.E27

MADE IN ITALY



VIVI 500 E27 - E40 - COMPONENTS

IP65



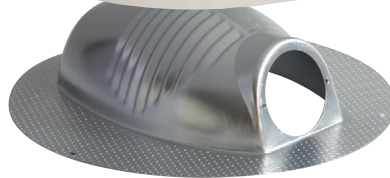
ROOF made of shockproof resin material, UV-rays stabilized, rust and corrosion-free.

TETTO realizzato in resina antiurto, stabilizzata ai raggi UV, inattaccabile da ruggine e corrosione.



High temperature resistant **CEILING** made of white polycarbonate (PC), UV-rays stabilized, suitable for ballast fixation on its upper side and provided with E27 or E40 lampholder on its lower side. Bulb in horizontal position.

SOFFITTO realizzato in policarbonato bianco (PC) ad alta resistenza al calore, stabilizzato ai raggi UV, nella cui parte superiore vengono fissati i reattori. Fornito completo di portalamпада E27 o E40 atto a sostenere la lampadina in posizione orizzontale.



Parabolic **REFLECTOR** made of anodized aluminium, designed to optimize the light distribution and to limit the skyward dispersion of the luminous flux.

PARABOLA riflettente realizzata in alluminio anodizzato, progettata per ottimizzare la distribuzione del flusso luminoso e limitarne la dispersione verso il cielo.



DIFFUSER made of UV-rays stabilized polymethylmethacrylate (PMMA), one piece only, available in clear or opal colour.

DIFFUSORE realizzato in polimetilmetacrilato (PMMA) stabilizzato ai raggi UV, un pezzo unico, disponibile in colore trasparente o opale.

Decorative connection **RING** to be fixed on the luminaries diffuser.

ANELLO decorativo di connessione da fissare sul diffusore dell'apparecchio.



Dimensions and weight

Height: 600 mm
Diameter: 600 mm
Weight: 6 Kg
Junction to support: diameter 60 mm
Area expose to wind pressure:
CxS = m² 0,1932

Moulded colours:

Black White Grey

Diffuser PMMA:

Clear Opal

E27-E40

*ADD SUFFIX

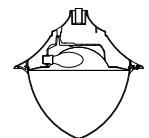


Luminaries supplied with E27 or E40 lampholder. Metal plate for ballast fixation available as an option (H.BAL.PLT)

suitable lamps: CFL-LED SON-HQI max 150W	E27 Lampholder only	.E27
	E40 Lampholder only	.E40

HORIZONTAL BULB

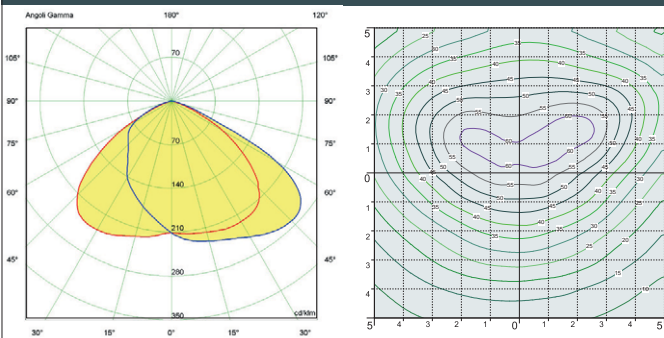
AGAINST LIGHT POLLUTION



E27 - E40 VERSION

* ADD THESE SUFFIXES TO THE REFERENCES MENTIONED IN THE CATALOGUE

PHOTOMETRIC DATA SAMPLE



VIVI 500 clear HQI 150W.

POST height 5mt
10x10mt area: average 35 lux

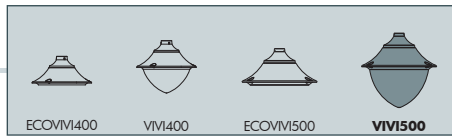
The photometric data for all the versions are available upon request or on our website.

COMPANY
BOLLARD
UP&DOWN
BULKHEAD
FLOODLIGHT
IN-GROUND
BRICKLIGHT
GARDEN
URBAN CLASSIC
URBAN MODERN
HIGH-BAY
POST
LAMPS
REFERENCES

VIVI 500

GRAND SIZE





VIVI 500
V60.000

Pcs 1
Kg 7,7
mc 0,10

NEW LOT/VIVI500
V60.115

Pcs 1
Kg 8,7
mc 0,13

MARIO/VIVI500
V60.129

Pcs 1
Kg 7,1
mc 0,11

PILAR/VIVI500
V60.253

Pcs 1
Kg 9,7
mc 0,15

EKTOR 6000 PILAR/VIVI500 2L
V60.384.P20

Pcs 1
Kg 94,6
mc 1,46

EKTOR 6000 PILAR/VIVI500 1L
V60.384.P10

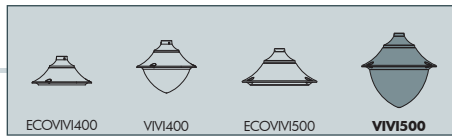
Pcs 1
Kg 86,2
mc 1,36

VIVI 500

GRAND SIZE



MADE IN ITALY



COMPANY
BOLLARD
UP&DOWN
BULKHEAD
FLOODLIGHT
IN-GROUND
BRICKLIGHT
GARDEN
URBAN CLASSIC
URBAN MODERN
HIGH-BAY
POST
LAMPS
REFERENCES

EKTOR 5000 PILAR/VIVI500 1L V60.377.P10	AKILLE 5000 PILAR/VIVI500 1L V60.427.P10
Pcs 1 Kg 55,7 mc 0,43	
EKTOR 4500 PILAR/VIVI500 1L V60.374.P10	AKILLE 4500 PILAR/VIVI500 1L V60.424.P10
Pcs 1 Kg 50,2 mc 0,40	
EKTOR 4000 PILAR/VIVI500 1L V60.371.P10	AKILLE 4000 PILAR/VIVI500 1L V60.421.P10
Pcs 1 Kg 44,7 mc 0,37	

EKTOR 5000 PILAR/VIVI500 2L V60.377.P20	AKILLE 5000 PILAR/VIVI500 2L V60.427.P20
Pcs 1 Kg 65,1 mc 0,60	
EKTOR 4500 PILAR/VIVI500 2L V60.374.P20	AKILLE 4500 PILAR/VIVI500 2L V60.424.P20
Pcs 1 Kg 59,6 mc 0,57	
EKTOR 4000 PILAR/VIVI500 2L V60.371.P20	AKILLE 4000 PILAR/VIVI500 2L V60.421.P20
Pcs 1 Kg 54,1 mc 0,54	