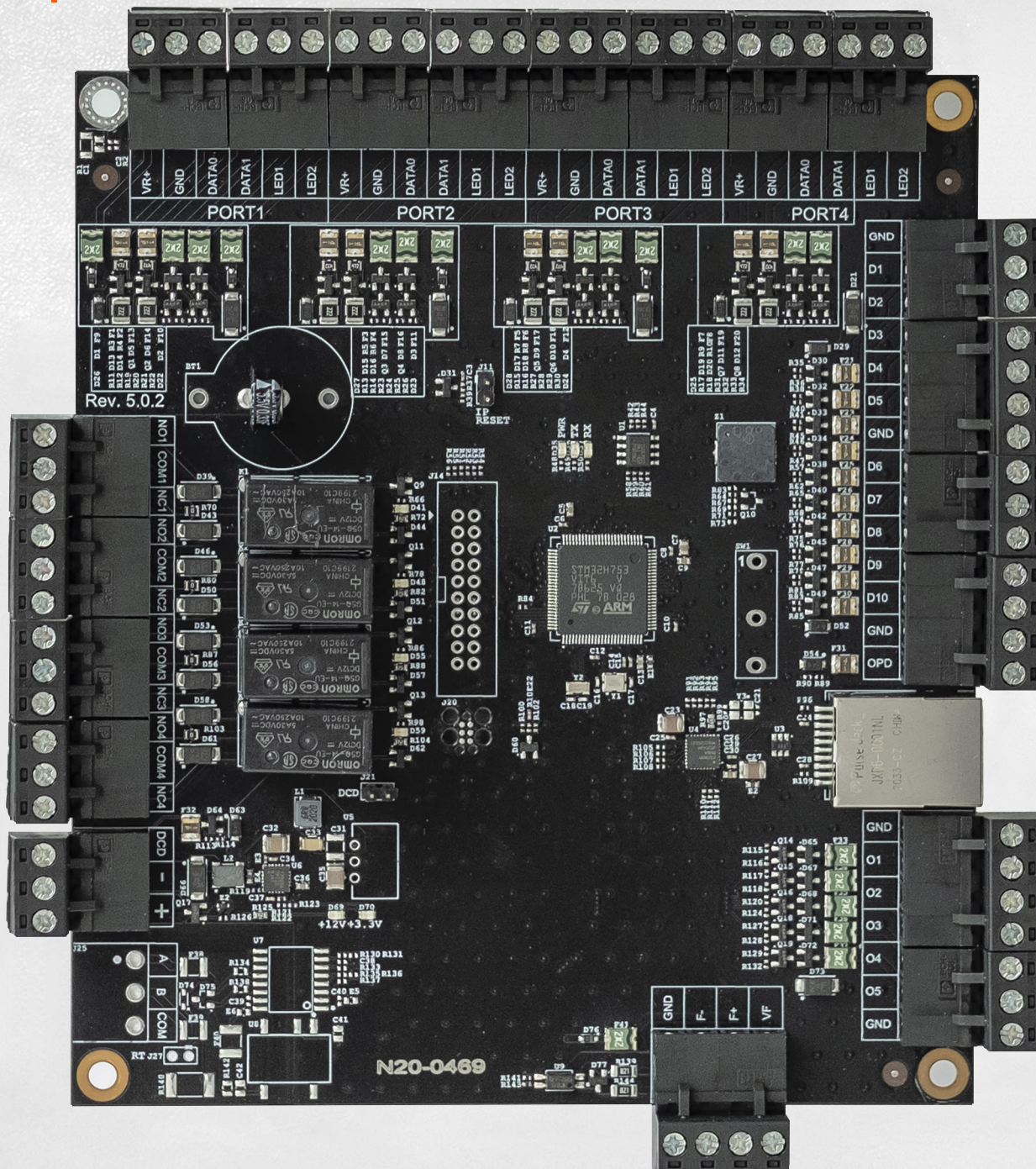


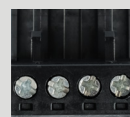
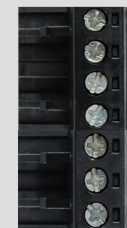
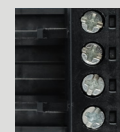
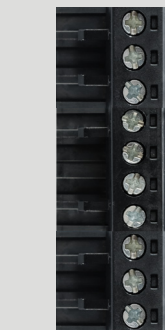
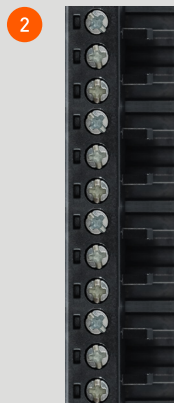
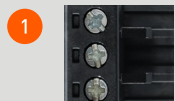
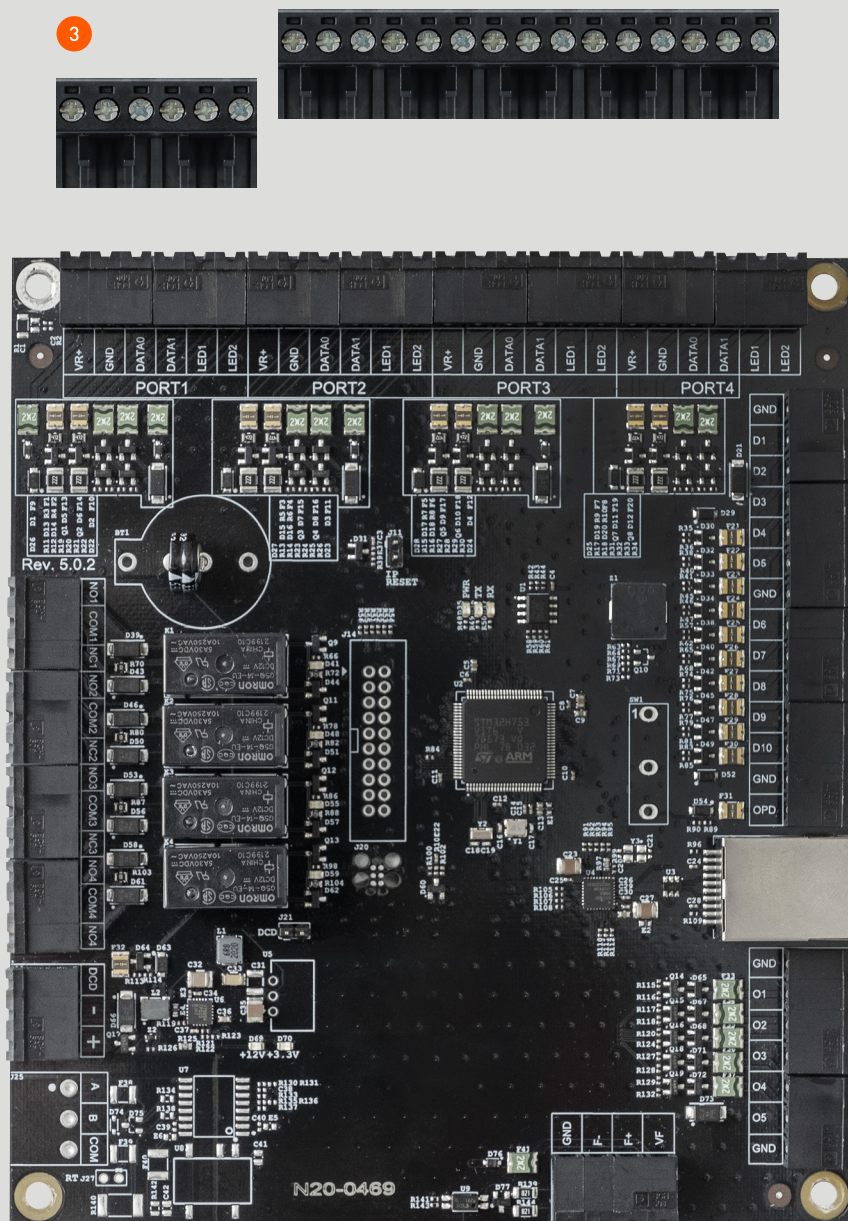
SIGUR



ACS CONTROLLER
SIGUR E510

* Scale 1:1

1. Power supply & battery health control
2. Actuators control
3. Up to 4 access points, Wiegand interface to connect readers & its indication management

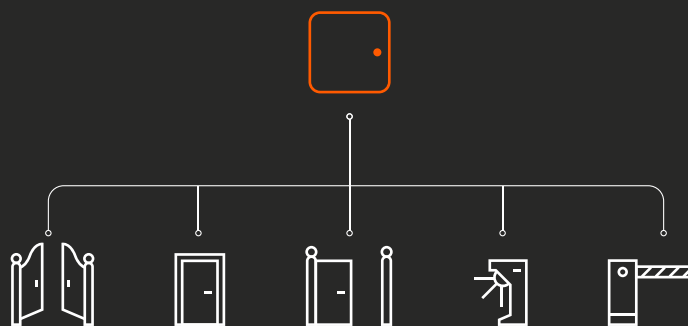


4. Connections for extra sensors
5. Connection for door sensor
6. Controller's outputs. Additional devices' control
7. Fire alarm & emergency unlock connection

Controller connection scheme

ANY ACTUATORS' CONTROL

- 01** Control of different equipment: doors, turnstiles, barriers, gates and others. Up to 4 access points. Types of devices can be combined flexibly.



ADDITIONAL EQUIPMENT

- 02** Card collectors, breathalyzers, lights and others connects directly to the controller. It does not require extension or similar devices.

READERS' CONNECTION

- 03** Work with any readers, including biometric ones, using the Wiegand protocol of various bit rates.

FIRE ALARM

- 04** Connection of several controllers to one fire alarm cable to unlock access points in a case of emergency.

AUTONOMOUS WORK

- 05** Autonomous realization of all the pass's logics, including the complex ones. All events are saved in the internal memory of the device and will be transmitted to the system server when communication is restored. More information:

DATA PROTECTION AND DEVICES' MONITORING

- 06**
- Modern encryption protocols.
 - Protection of transmitted data by SSL/TLS encryption between the server and controllers.
 - Support of DHCP and SNMP protocols, centralized administration and monitoring of devices in the system.

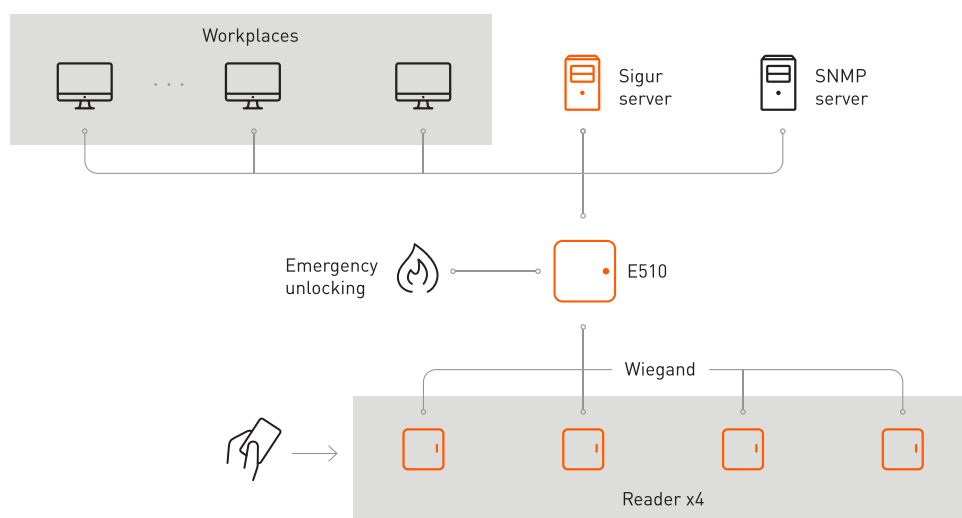
INSTALLATION AND EXPLOITATION

- 07**
- Removable terminal blocks for convenient connection of peripheral equipment: readers, sensors and others.
 - Extended temperature range of work from -40 to + 50 °C.
 - Clear marking of the controller's body with individual stickers.



KEY FEATURES

Feature	Description
Access points' management	Up to 4 access points: doors, turnstiles, gates or barrier arms depending on the settings and availability of free terminal blocks
Internal memory	90 000 identifiers 30 000 time zones 400 000 events 1
Server networking interface	Ethernet Exchange rate – Ethernet 10/100BASE-TX
Network protocols	DHCP, SNMP
Data encryption	SSL/TLS
Reader interface	Wiegand-26, 34, 37, 42, 58 Wiegand-4, 6, 8 (for keyboards) Dallas Touch Memory
Number of relay outputs	4
Number of open collector outputs	13
Number of signal inputs	10
Connection to fire alarm	Two-wire galvanically isolated line to connect several controllers to a single fire alarm cable
Supply voltage	10...15 V
Consumed current	max. 250 mA
Wattage	max. 4 W
Protection class	IP20
Temperature range	-40°C to +50°C



INTEGRATION INTO IT-INFRASTRUCTURE

The controllers are connected directly to the local network. This feature makes them convenient to use at objects with a developed network infrastructure, facilitating greatly cable installation. There is no limit on the number of controllers connected to the network. All data transmitted between the controllers and the system's server is encrypted (SSL / TLS).

The IP network used can be of any complexity and length, the controllers can interact via the Internet. Any controllers and methods of building a network can be combined within a system.

SNMP SUPPORT

A handy tool for administration and monitoring of devices in a network infrastructure. For example:

- Tracking the status of devices
- Various control scenarios
- Monitoring of the devices' input voltage
- Checking the date and time on the controller

DATA ENCRYPTION

SSL/TLS encryption is an established IT standard for data protection. The use of encryption allows to protect the transmitted data between the server and the controller, which is a mandatory requirement for objects with increased security requirements.



SIGUR

025

Model: N20-0488, E310
MAC: 02:00:00:00:00:00
Serial (Сериальный №): 15270477

N20-0488

| SIGUR | ACCESS MANAGEMENT