

VTevo

Mobile Lighting Tower



GENERAC® | **MOBILE**

GENERAC[®] | **MOBILE**

VTevo

The lighting power of 4x320W G4 LED multichip floodlights meets a very narrow canopy design evolving the new **VTevo** onto the most compact and eco-friendly lighting tower ever created! **VTevo** will help you to skimp up to 75% of fuel and protect our environment with a reduction in carbon emissions up to 10 Ton per year. The machine can run continuously without refueling up to 171 hours.



VTevo: Product Highlights



**4x320W HEAVY DUTY G4 LED
(LED POWER NO DRIVER)
188160 Lm - 147 lumen/watt**

Galvanized base of the mast

**Coiled cable protection and electrical
junction box enclosure with protection**

**Steel body – Silenced for
maximum reliability and quietness**

**Double, ventilation grille allows a suitable
ventilation even in hot climates**

**120 liters metal tank (spillage proof-
bundled) allows running time of 171 h**

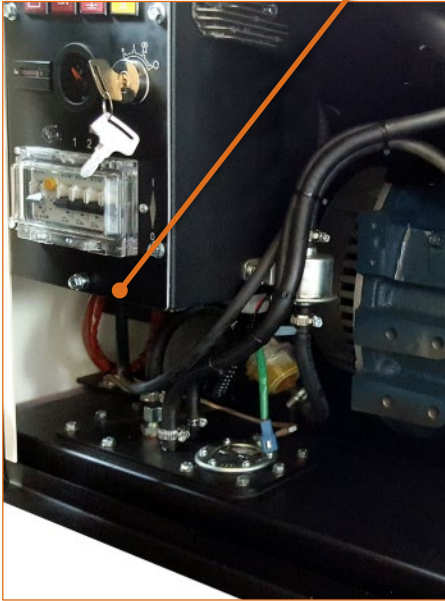
Compact frame (22 units in 40' cntr)

**Wide inspection & maintenance lockable
side doors steel canopy!
(customizable colors 100% available)**

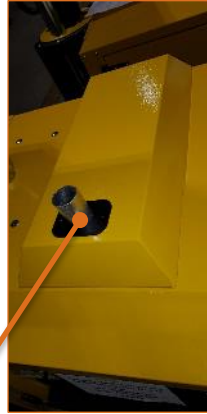
**Forklift pockets (all sides) on the base
frame. ZERO damage during handling and
transportation with double loading
position (from and side)**

VTevo: Engine Compartments

Sorted and grouped wiring.
Maximum access to the
assistance & service.



Muffler positioned on
top and protected by
a hood. 100% safe
and reliable.



120 liter metal fuel tank
allows a total running
time of up to 170h

Low noise

Unexposed tank

Leakage containment tank

DAS (Tank anti-emptying system)

LARGE filler neck for easy refueling

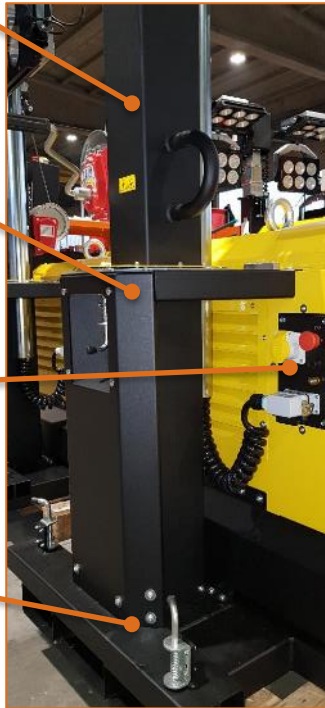
VTevo: Vertical Mast & Safety

Vertical telescopic mast for the best security. Height up to 8 metres.

Protective collar, sturdy, wide and equipped with safety and locking hook. Mast completely protected from bumps and dirt.

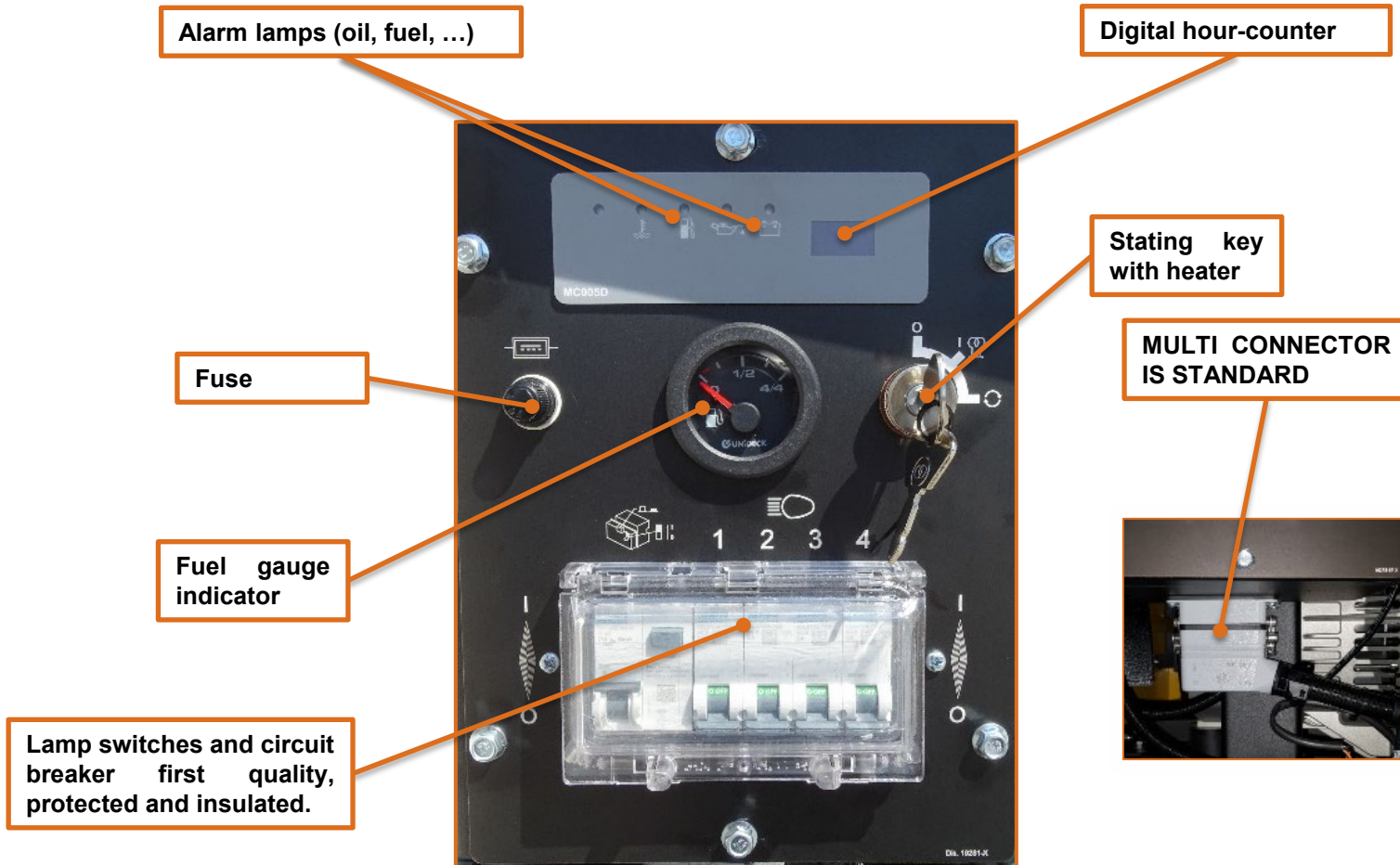
Lamps link with multi-connector, and emergency stop button, well positioned and safe.

The swivel unit is well insulated, protected and fitted with a ball bearing. Standard.



Rotation locking hook, with spring. Long life and safety.

VTevo: Manual Control Panel (MCP)



VTevo: optional Automatic Control Panel (ACP)

ECO PANEL IS SIMPLY ALL IN ONE!

- Oil pressure status
- Alternator input status
- Pre-heating system status
- Fuel level indicator
- Voltage indicator
- Frequency indicator
- Hour counter
- Engine status (on/off)
- Clock+Maintenance alarms
- Functionality button (automatic/manual)
- GTL01 button (on/off)
- Menu button
- Lamps buttons (on/off)



The simplicity and reliability of having all your lighting tower under control in just a few simple steps.

Control panel, designed and developed by Generac Mobile, for 100% use on our lighting towers. No compromises at all!

VTevo + Linktower T3

The best illumination with the lowest fuel consumption

It is possible to connect up to two Linktower units to a VTevo, to increase the illuminated area using only one engine!

VTevo:

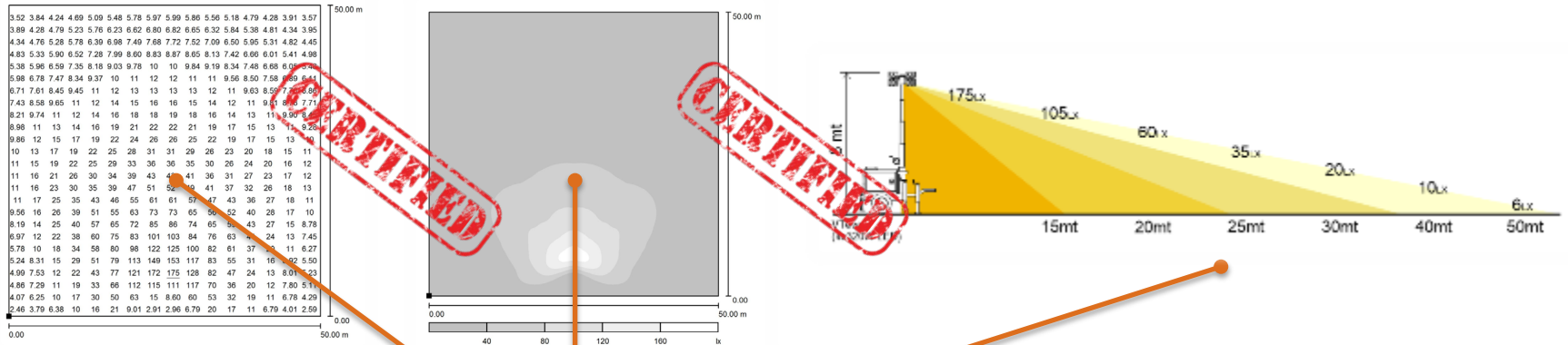
Fuel consumption: 0.70 L/h
Run time: 171 h
Illuminated area: 4500 m²

VTevo + 2x Linktower:

Fuel consumption: 1.00 L/h
Run time: 120 h
Illuminated area: 9500 m²



VTevo: Light & Data



Generac Mobile guarantees the diagram of the illuminated area, certified by third parties, with a guarantee of pure truth! No second intention, no fake info, and data. No lie, maximum transparency!

**High efficiency
NEW G4 LED
4 x 320 Watt
188.160 Lumen
4500 m²**

**Truly Tested
by our
technicians
In our yard
100% true values**

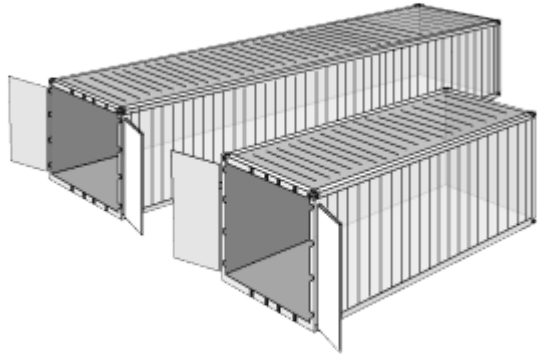


Distance	VTevo
mt	lux @ 8mt
5	270
10	743
15	373
20	163
25	90
30	51
35	28
40	19
45	16

TECHNICAL DATA

VTevo: two is better than one! Choose your evolution!

		VTevo K2	VTevo Y2
Min. dimensions (L x W x H)	mm	2480 x 1190 x 2450	2480 x 1190 x 2450
Max. dimensions (L x W x H)	mm	2480 x 2400 x 8000	2480 x 2400 x 8000
Dry weight	kg	658	650
Lifting system		Manual	Manual
Mast rotation	°	340	340
Lamps power	W	4 x 320	4 x 320
Lamps type		G4 LED	G4 LED
Total lumen	Lm	188.160	188.160
Illuminated area	m ²	4500	4500
Engine		Kubota Z482	Yanmar 2TNV70
Engine cooling		Liquid	Liquid
Cylinders (q.ty)		2	2
Engine speed (RPM)	50 Hz / 60 Hz	1500 / 1800	1500 / 1800
Liquid containment (110%)		Yes	Yes
Alternator	kVA/V/Hz	5/220/50 – 5/240/60	5/220/50 – 5/240/60
Outlet socket	kVA/V/Hz	2/220/50 – 2/240/60	2/220/50 – 2/240/60
Avg. sound pressure	dB(A) @ 7m	59	59
Wind speed resistance	km/h	80	80
Tank capacity	litres	120	120
Run time	h	171	171



20' CONTAINER: 10 units
(disassembled**)
40' CONTAINER: 22 units
(disassembled**)

13mt TRUCK: 25 units (disassembled**)
13mt TRUCK: 16 units (only tow bar dismantled)



** dismantled parts: tow bar, wheels and stabilizers

VTevo: THE REAL POWER IN PICTURES



It is prohibited the unauthorized distribution. This material is intended only for internal use.

GENERAC | MOBILE

GENERAC[®]



MOBILE