



YOULYY

INDUSTRIAL CO., LTD.



PROFESSIONAL SUPPLIER
OF
PHARMACEUTICAL PACKAGING



Company Profile	P1
Workshops	P3
Quality Management System	P4
On-line Automatic Inspection System	P5
Tubular Glass Vials for Injection	P6
Tubular Glass Vials for Oral Liquid	P8
Tubular Screw-neck Vials	P9
Large Tubular Glass Bottles	P10
Glass Cartridges	P11
Glass Ampoules	P12
Glass Test Tubes/Culture Tubes	P14
Moulded Glass Bottles	P15
Pharmaceutical Glass Tubing	P16
Pre-filled Syringes	P17
Vial Caps/Seals	P18
Pharmaceutical Rubber Stoppers	P19
Infusion Bags	P20
Auxiliary Products	P22



Company Profile

Yoully Industrial Co., Ltd. is a professional Chinese manufacturer of pharmaceutical packaging products, with seven branch companies and three shareholding factories, the earliest factory was established in 1992.

The main products of Yoully company are tubular glass vials, glass cartridges, glass test tubes, glass ampoules, moulded glass bottles, prefilled syringes, neutral borosilicate glass tubes, high borosilicate glass tubes, soda-lime glass tubes, aluminum seals, aluminum-plastic seals, plastic caps, butyl rubber stoppers. Products are widely used in medicine, health products, cosmetics, daily necessities and other fields.

Yoully's international business company also sell related products and equipments. Yoully team has rich design experience, can provide a full range of design solutions for pharmaceutical packaging products for customers.

Yoully company is committed to serving pharmaceutical companies and providing pharmaceutical companies with high-quality, high-stability products and services. Most of our team's main members have been engaged in the field of pharmaceutical packaging products, and have in-depth understanding of the production process and quality control system required by GMP standards. GMP management norms are the general program of daily management of Yoully. Yoully has continuously improved the quality management system and has passed ISO15378, ISO9001, ISO14001, the products also have CE certification.

Yoully company has three professional international business teams, they have rich experience in international trade, has exported our products to Germany, France, Britain, Holland, Poland, Russia, Ukraine, America, Canada, Mexico, Brazil, Chile, the United States of America, Canada, Mexico, Brazil, Chile, Argentina, Turkey, Saudi Arabia, Israel, Kazakhstan, India, Pakistan, Bangladesh, Egypt, Nigeria, South Africa, South Korea, Thailand, Indonesia, Malaysia and more than 70 countries and regions.

Yoully will always follow the development of the pharmaceutical industry, face the future, challenge opportunities, increase investments in scientific research and advanced equipment, Yoully always provides customers with integrity, professional, efficient, rigorous service. Yoully has always been committed to becoming the world's first-class modern pharmaceutical packaging production enterprises.





Vision & Values

Enterprise Vision: International advanced pharmaceutical packaging supplier

Enterprise tenet: Committed to the safe and reliable pharmaceutical packaging products; serve the human health, benefit the society

Business objectives: Pursue industry leadership, maintain continuous growth, help staff upgrade, improve team cohesion, and fulfill social responsibility

Business philosophy: globalization, localization, branding

Management guidelines: clear objectives, clear powers and responsibilities, clear rewards and penalties, knowing people to serve well

Values: customer supremacy, dare to compete first, honesty and trust, sunshine mentality

Enterprise spirit: self-improvement, dedication, pursuit of excellence, innovation

Team concept: integrity, respect for inclusiveness, solidarity and collaboration, contribution-oriented

Quality concept: customer satisfaction, continuous improvement, full participation; craftsman spirit, excellence

Service concept: good faith, professional, efficient, rigorous





Workshops





Quality Management System

Yoully Industrial Co., LTD. always implement the "quality first" management concept, fully perform ISO15378:2017 quality management system requirements.

We strictly control raw materials, production process, semi-finished products, finished products and other process to ensure stable and reliable product quality.

1. We have established a perfect quality management system

We fully implements the ISO15378:2017 quality management system, and formulates a full set of working standards, production standards and recording standards, established enterprise internal control standards higher than ISO standards.

2. We use the on-line automatic inspection system

We have installed advanced fully automatic light sense inspection equipment on the production line to inspect all products automated to avoid the instability of inspector inspection.

3. Complete test and inspection ability

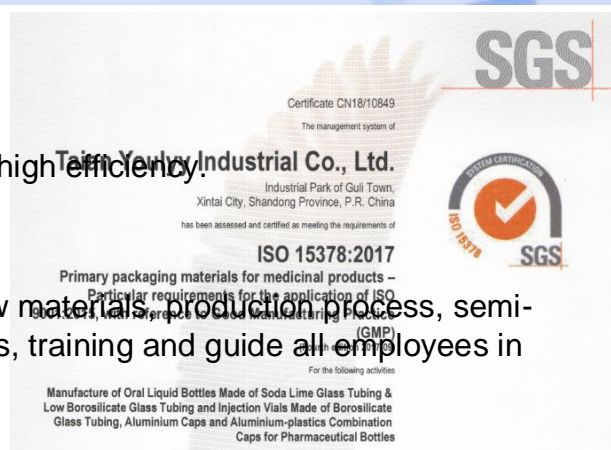
The company has a complete set of advanced laboratory testing instruments, which can be used for testing of standard requests.

4. Advanced and efficient production equipment

Our production equipments are high precision and high efficiency.

5. Independent quality management department

Quality management department strictly control raw materials, production process, semi-finished products, finished products and other process, training and guide all employees in accordance with the GMP requests for production.



6. Raw material supply chain management

We select suppliers strictly in accordance with the requirements of ISO15378:2017.

7. Retention sample management

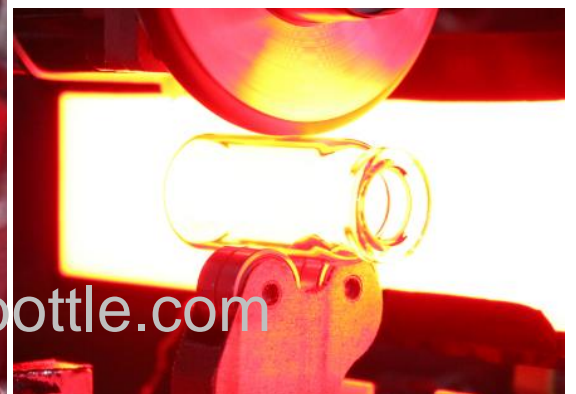
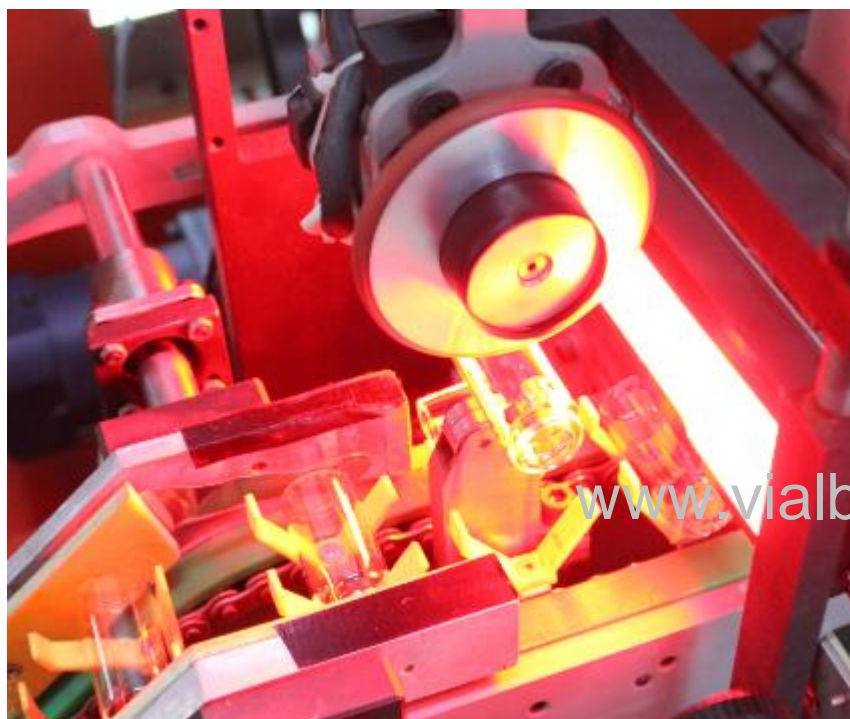
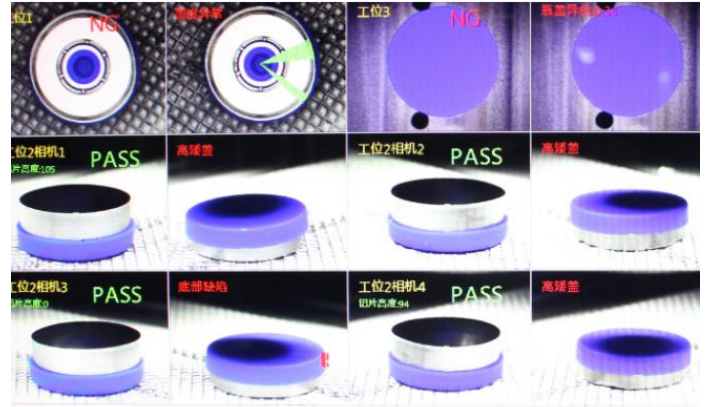
We have a professional sample retention room, and has a perfect management system, we store up the samples for every batch and every order.

8. Comprehensive training system

We have detailed training plans and training courses for employees in different positions, different job contents, different operating methods, various quality problems, customer complaints, etc.



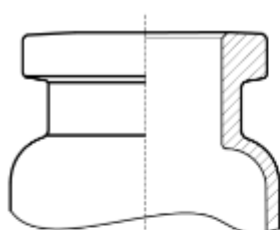
On-line Automatic Inspection System



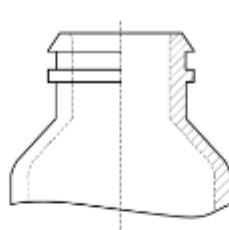


Tubular Glass Vials for Injection

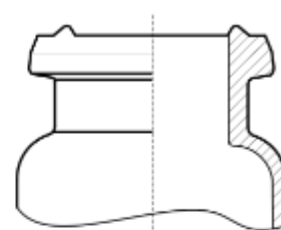
Type of glass	neutral borosilicate glass
Color	transparent or amber
Logo or text	customizable
Dimensions	ISO8362, Chinese standard, customizable
Water resistance	Type I
Acid resistance	Type I
Alkali resistance	Type II
Inner packaging	plastic box or paper box with heat shrinkage film
Outside packaging	strong carton, pallet



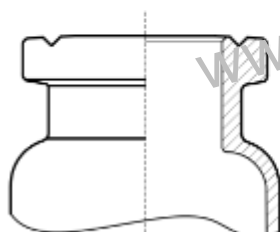
Standard



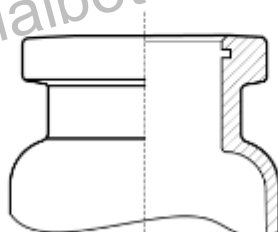
Small crimp



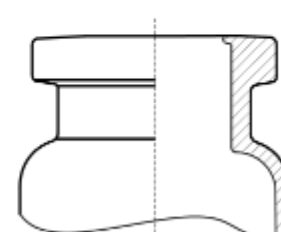
Bulge on top



Groove on top



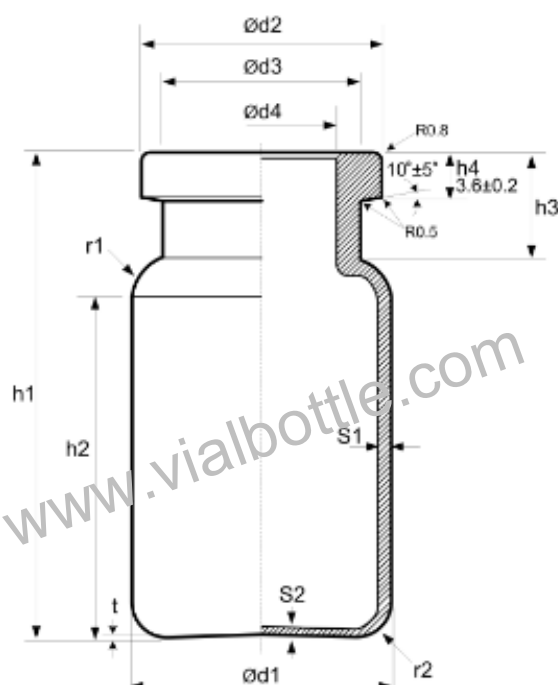
Groove on
internal surface



Bulge on
internal surface



Tubular Glass Vials for Injection

**Standard: YBB00302002-2015****Unit: mm**

Specifi- cation	Max.	d1		d2	d3	d4	h1		h2	h3 ≈	r1 ≈	r2 ≈	s1 ≈	s2	t	Weight	Max. Vol. M (ml)			
	a	Basic	Toler.	+0.2 -0.3	Max.	±0.2	Basic	Toler.	Min.		Min.	Max.	(≈g)							
2ml	1.0	16.0	±0.2	13.0	10.5	7.0	31.0	±0.5	18.0	8.0	2.5	1.5	1.0	0.7	0.7	4.2	3.5			
3ml									35.0							20.0	4.6	4.2		
5ml		18.4							7.6							39.7	28.0	5.0	7.5	
7ml	1.2	22.0	±0.2	19.6	16.0	12.6	45.0	±0.5	27.0	7.5	3.5	2.0	0.8	0.7	0.7	8.2	10.5			
8ml																	49.7	32.0	9.0	11.5
10ml																		37.0	9.7	13.5
15ml		24.0	±0.3	19.6	16.0	12.6	52.0	±0.7	37.0	8.5	5.5	2.5	1.0	0.7	1.0	12.1	18.5			
20ml							55.0		35.0				1.1			15.0	23.5			
25ml	28.0						65.0		47.0				1.2			16.2	28.5			
30ml	32.0						70.0		55.0				10.0			22.5	37.0			

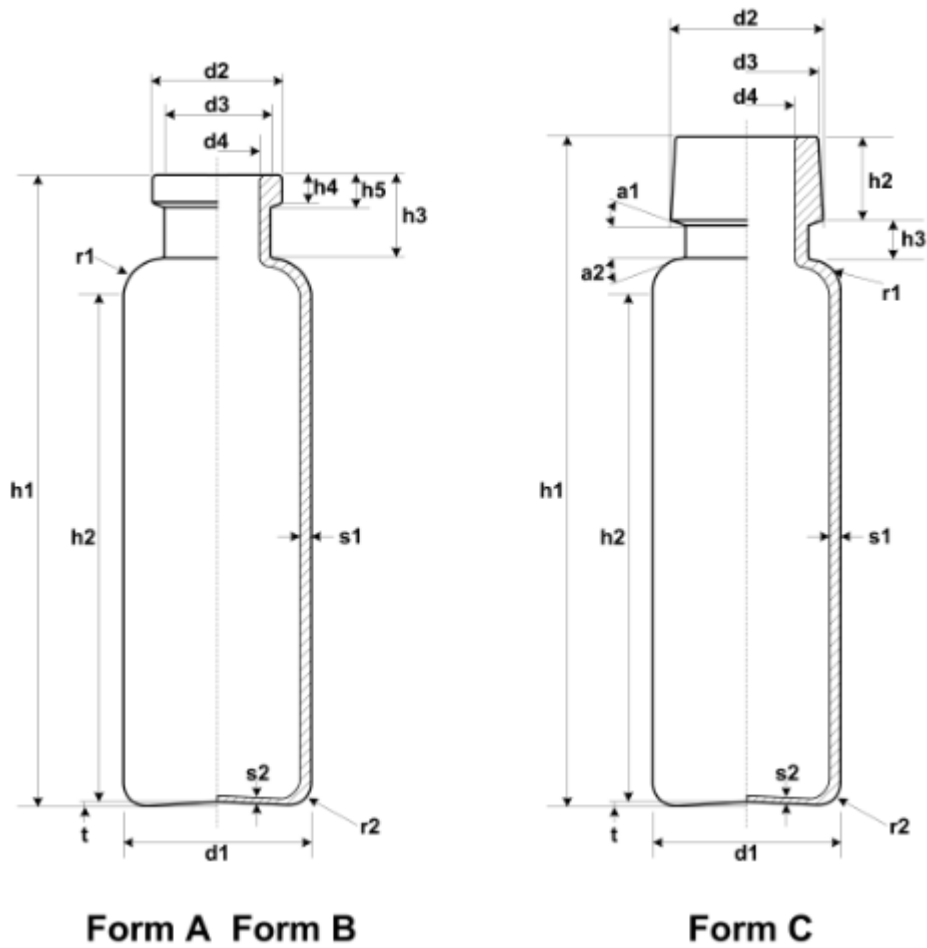
Standard: ISO8362-1**Unit: mm**

Specifi- cation	Max. Vol. MI		a	d1		d2	d3	d4	h1		h2	h3	r1	r2	s1	s2		t	Weight g
	Basic	Toler.		Basic	Toler.	+0.2 -0.3	Max.	±0.2	Basic	Toler.	Min.					Min.	Max.		
2R	4.0	±0.5	1.0	16.0	±0.15	13.0	10.5	7.0	35.0	±0.5	22.0	8.0	2.5	1.5	1.0	0.6	0.7		5.0
4R	6.0										32.0								6.1
6R	10.0										26.0								8.3
8R	11.5	±1.0	1.2	22.0	±0.2	20.0	16.5	12.6	45.0	±0.5	31.0	±0.5	3.5	2.0	±0.04	0.7	0.7		9.4
10R	13.5										30.0								10.2
15R	19.0										45.0								12.8
20R	26.0	±1.5	1.5	24.0	±0.3	17.5	17.5	12.6	55.0	±0.7	35.0	10.0	5.5	2.5	1.2	0.7	1.0		17.4
25R	32.5										45.0								20.0
30R	37.5										55.0								22.7

Non-standard glass vials can be customized



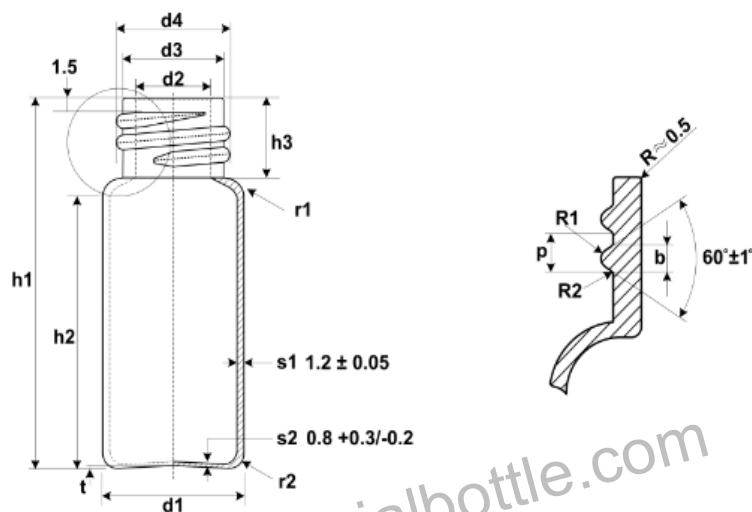
Tubular Glass Vials for Oral Liquid



Tubular Screw-neck Vials



Screw-neck vials made of glass tuing for liquid dosage forms



Standard: ISO11418-7

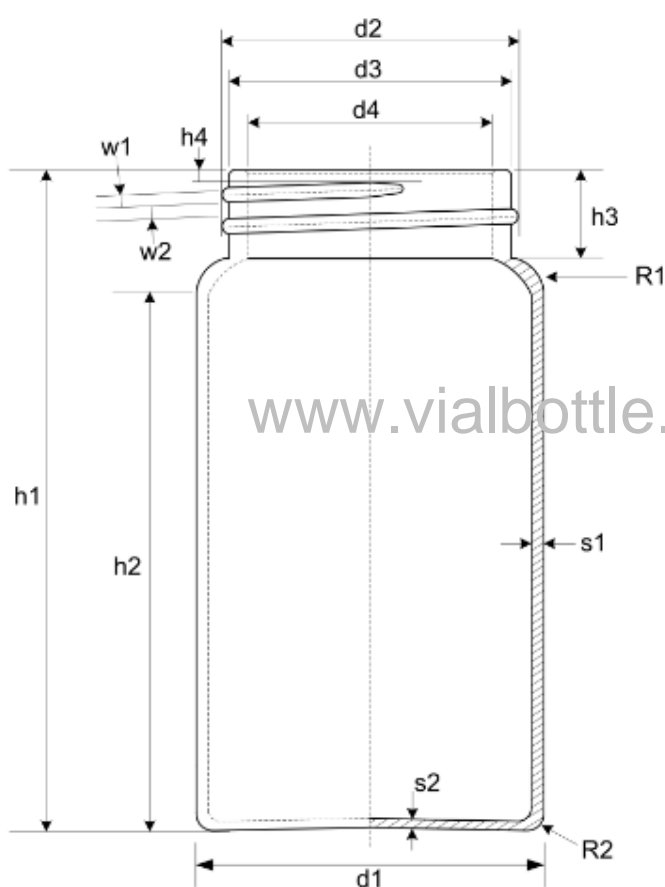
Unit: mm

Nominal size	d1	d2	d3	d4	h1	h2 Min.	h3 ±0.5	p	R1 ≈	R2	r1	r2	t	Weight ≈g
5ml	18.0 ± 0.2	8.6 ± 0.2	12.3 - 0.4	14.0 - 0.4	45.0 ± 0.5	29.0	10.5	2.5	0.62	0.25	3.0 ± 1.0	1.5 ± 0.5	0.5 ± 0.3	7.1
7.5ml	22.0 ± 0.2	11.5 ± 0.2	16.0 - 0.5	18.0 - 0.5	40.0 ± 0.5	23.0	11.0	3.0	0.74	0.3	3.5 ± 1.0	2.0 ± 0.5		8.8
10ml	24.0 ± 0.2	11.5 ± 0.2	16.0 - 0.5	18.0 - 0.5	45.0 ± 0.5	28.0								10.5
15ml	24.0 ± 0.2	11.5 ± 0.2	16.0 - 0.5	18.0 - 0.5	60.0 ± 0.5	43.0								13.7
20ml	30.0 ± 0.3	15.2 ± 0.25	20.0 - 0.5	22.0 - 0.5	55.0 ± 0.7	36.0							16.5	
25ml	30.0 ± 0.3	15.2 ± 0.25	20.0 - 0.5	22.0 - 0.5	65.0 ± 0.7	46.0					5.5 ± 1.5	2.5 ± 1.0	0.6 ± 0.4	18.6
30ml	30.0 ± 0.3	15.2 ± 0.25	20.0 - 0.5	22.0 - 0.5	75.0 ± 0.7	56.0	21.2							



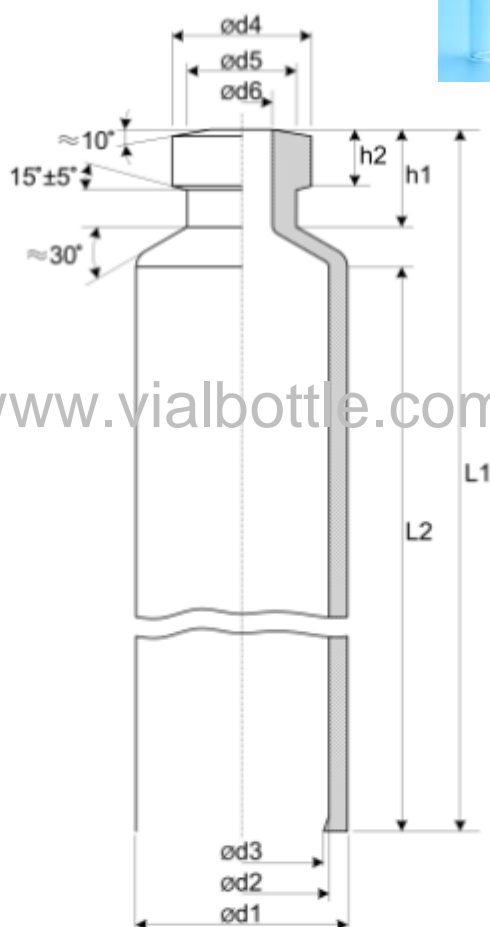
Large Tubular Glass Bottles

Type of glass	high borosilicate glass
Color	transparent
Logo or text	customizable
Dimensions	customizable
Inner packaging	plastic box or paper box with heat shrinkage film
Outside packaging	strong carton, pallet





Glass Cartridges



www.vialbottle.com

d1		d2		d3 min	d4		d5		d6		h1		h2	
Basic	Toler. (±)	Basic	Toler. (±)	Basic	Basic	Toler. (±)	Basic	Toler. (±)	Basic	Toler. (±)	Basic	Toler. (±)	Basic	Toler. (±)
8.65	0.1	6.85	0.1	6.55	7.15	0.2	5.6	0.35	3.15	0.2	5.0	0.20	2.9	0.1
10.85	0.1	8.65	0.1	8.35	7.15	0.2	5.6	0.35	3.15	0.2	5.0	0.20	2.9	0.1
10.95	0.15	9.25	0.1	8.95	7.15	0.2	5.6	0.35	3.15	0.2	5.0	0.20	2.9	0.1
11.60	0.15	9.65	0.1	9.35	7.15	0.2	5.6	0.35	3.15	0.2	5.0	0.20	2.9	0.1
14.00	0.15	12.00	0.15	11.65	9.50	0.2	7.6	0.35	4.50	0.2	5.0	0.50	2.9	0.15
14.45	0.15	11.85	0.15	11.50	9.50	0.2	7.6	0.35	4.50	0.2	5.0	0.50	2.9	0.15
18.25	0.15	16.05	0.15	15.50	9.50	0.2	7.6	0.35	4.50	0.2	5.0	0.50	2.9	0.15
L1, L2 can be customized.														



Glass Ampoules



Form B



Form C



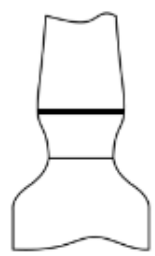
Form D



One-point-cut
(OPC)



Color break



Cut ring





Glass Ampoules

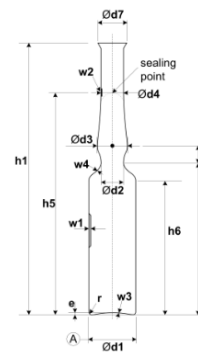


Figure 1 - Form B

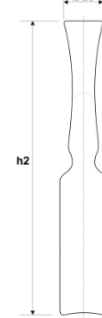


Figure 2 - Form C

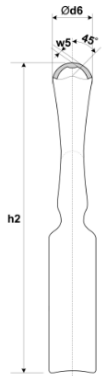


Figure 3 - Form D

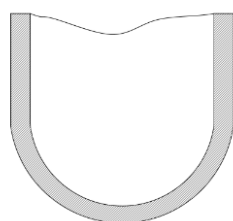
Standard: ISO9187

Dimension in millimetres			Nominal volume							
			1ml	2ml	3ml	5ml	10ml	20ml	25ml	30ml
External diameter	Body	d1	10.75 ±0.15	10.75 ±0.15	12.75 ±0.15	14.75 ±0.15	17.75 ±0.20	22.5 ±0.25	22.5 ±0.25	22.5 ±0.25
	Constriction	d2 ±0.5	6.5	6.5	6.5	7.0	7.5	8.5	8.5	8.5
	Bulb	d3	8.5 ±0.5	8.5 ±0.5	8.5 ±0.5	9.0 ±0.5	9.5 ±0.5	12.0 ±1.0	12.0 ±1.0	12.0 ±1.0
	Stem	d4	6.0 ±0.35	6.0 ±0.35	6.0 ±0.35	7.0 ±0.35	7.1 ±0.35	7.8 ±0.5	7.8 ±0.5	7.8 ±0.5
	Funnel	d5	9.0 ±0.8	9.0 ±0.8	10.7 ±0.8	12.2 ±1.0	13.0 ±1.0	14.0 ±1.0	14.0 ±1.0	14.0 ±1.0
	Dome	d6 ±1.0	10.0	10.0	10.5	12.0	13.5	13.5	13.5	13.5
	Flared end	d7 ±1.0	8.0	8.0	8.0	9.0	9.5	11.0	11.0	11.0
Overall height	Form B	h1 ±1.0	60	72	75	83	102	113	128	143
	Form C	h2 ±1.0	67	79	82	90	109	120	135	150
	Form D	h3 ±1.0	70	83	89	95	112	126	141	156
Height	Height to constriction	h4	25.5 ±0.5	37.5 ±0.5	39.5 ±0.5	46.5 ±0.5	62.0 ±1.0	76.0 ±1.3	91.0 ±1.3	106.0 ±1.3
	Height to gauging point	h5 ±2.0	47.0	57.0	62.0	68.0	87.0	100.0	115.0	130.0
	Body height	h6 min.	21.0	33.0	35.0	41.0	55.0	65.0	80.0	95.0
	Height measured from centre of constriction to bulb	h7 max.	4.5	4.5	5.0	5.5	6.0	6.5	6.5	6.5
Base	Radius	r ±0.5	1.0	1.0	1.5	1.5	1.5	2.0	2.0	2.0
	Depth of the base	e	1.0 ±0.5	1.0 ±0.5	1.0 ±0.5	1.0 ±0.5	1.25 ±0.75	1.5 ±1.0	1.5 ±1.0	1.5 ±1.0
Wall thickness	Thickness of body	w1	0.5 ±0.03	0.5 ±0.03	0.5 ±0.03	0.55 ±0.03	0.6 ±0.04	0.7 ±0.04	0.7 ±0.04	0.7 ±0.04
	Thickness of stem at gauging	w2 ±0.05	0.37	0.37	0.37	0.40	0.47	0.50	0.50	0.50
	Thickness at base	w3 min.	0.3	0.3	0.3	0.4	0.4	0.5	0.5	0.5
	Thickness at constriction	w4	0.7 ±0.1	0.7 ±0.1	0.7 ±0.1	0.7 ±0.15	0.8 ±0.15	1.0 ±0.2	1.0 ±0.2	1.0 ±0.2
	Thickness of dome	w5	0.1 to 0.25					0.1 to 0.30		
Circular run-out tolerance			t	0.6	0.6	0.8	1.0	1.0	1.2	1.2
Volume to centre of constriction			V _≈	1.5	2.3	3.5	5.5	11.5	23.5	33.5

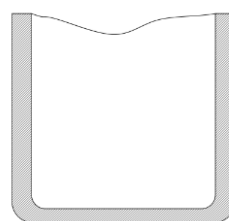


Glass Test Tubes/Culture Tubes

Type of glass	borosilicate glass
Color	transparent or amber
Logo or text	customizable
Dimensions	customizable
Inner packaging	plastic box or paper box with heat shrinkage film
Outside packaging	strong carton, pallet



Round bottom



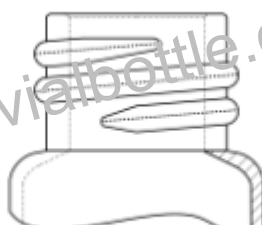
Flat bottom



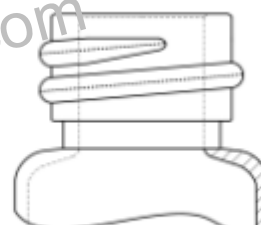
Smooth finish



Finish with rim



Thread neck 1



Thread neck 2



Thread neck 2



Moulded Glass Bottles

Moulded glass bottles	Description
Moulded injection vials	Clear color: USP type I, II, III Amber color: USP type II, III 7ml, 8ml, 10ml, 15ml, 20ml, 30ml, 50ml, 100ml
Essence oil bottles	Clear, GPI 400 0.5oz, 1oz, 2oz, 4oz, 20ml, 30ml
Glass infusion bottles	Clear, USP type I, II; ring finish 28m, 32mm 50ml, 100ml, 250ml, 500ml
Glass bottles for syrup	Clear, amber 30ml, 60ml, 90ml, 125ml, 150ml
Dropper dispensing bottles	Clear, amber, green 10ml, 15ml, 30ml, 50ml, 100ml, 150ml
Wide mouth bottles	Clear, amber, blue; GPI 400 60ml~500ml
Food & Juice glass bottles	Clear, blue 50ml~500ml
Cosmetic bottles	Clear 2ml~20ml





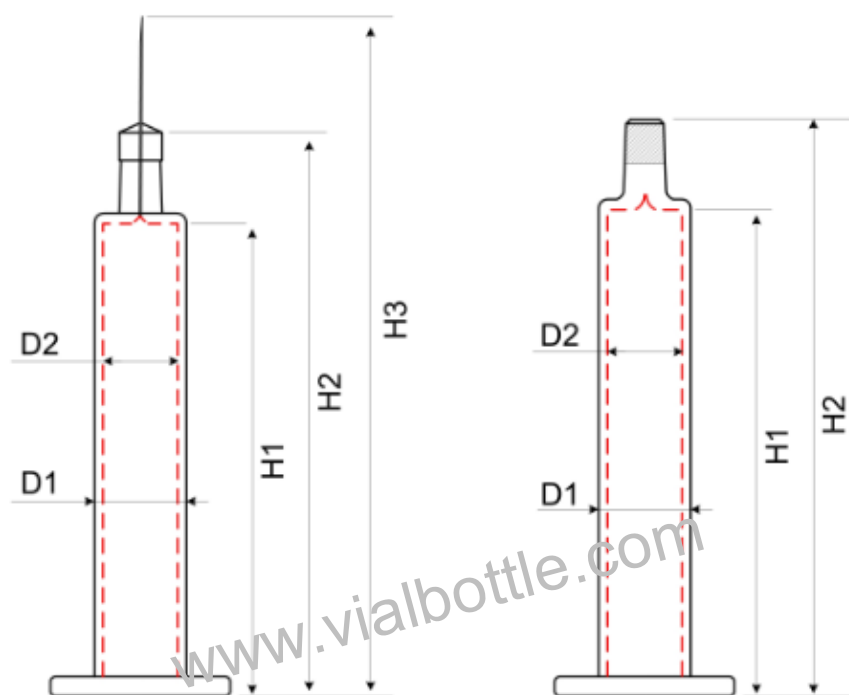
Pharmaceutical Glass Tubing



ITEM		Neutral borosilicate glass tube	Low borosilicate glass tube	High borosilicate glass tube	Soda-lime glass tube
Thermal expansion coefficient (20-300°C, $\times 10^{-6}/^{\circ}\text{C}$)		3.5~6.1	6.2~7.5	3.2~3.4	7.6~9.2
Transformation Temperature (annealing point)		565 \pm 10°C	550 \pm 10°C	560 \pm 10°C	530 \pm 10°C
Softening point		785 \pm 10°C	740 \pm 10°C	825 \pm 10°C	720 \pm 10°C
Density at 25°C(g/cm ³)		2.34	2.46	2.23	2.50
Chemical Composition	SiO ₂	75 \pm 0.5 %	70~72 %	78~81 %	68~71 %
	B ₂ O ₃	10.5 \pm 0.5 %	5.5~7.1 %	12.6~14 %	1.0~1.5 %
	Al ₂ O ₃	5.0 \pm 0.5 %	4.0~5.0 %	1.5~2.3 %	3.0~4.0 %
	BaO	0.5 \pm 0.2 %	1.5~3.0 %	0.3~0.6 %	2.0~3.0 %
	CaO	1.0~1.5 %	2.0~3.0 %	0.2~0.5 %	4.5~6.5 %
	Na ₂ O	7.0 \pm 0.5 %	6.5~8.0 %	2.0~4.0 %	12.0~13.5 %
	K ₂ O	0.5 \pm 0.2 %	4.0~5.0 %	1.0~2.0 %	5.0~7.0 %
Chemical Properties	Hydrolytic resistance	Type I	Type I	Type I	Type II/III
	Acid resistance	Type I	Type I	Type I	Type II/III
	Alkali resistance	Type II	Type II	Type II	\
Application		Tubular glass vials Glass ampoules Glass cartridges Prefilled syringes	Tubular glass vials Glass ampoules Glass test tubes Culture tubes	Tubular glass vials Glass test tubes Culture tubes Domestic glass-ware Solar energy tubes	Tubular glass vials Glass test tubes Culture tubes
Features		best chemical properties better physical properties best dimensions best appearance	general chemical properties better physical properties better dimensions general appearance	better chemical properties best physical properties bad dimensions better appearance	bad chemical properties bad physical properties better dimensions general appearance
Color		clear, amber	clear, amber	clear, amber	clear, amber, blue



Pre-filled Syringes



Specification	D1(mm)	D2(mm)	H1(mm)	H2(mm)	H3(mm)
1ml slight with needle	8.15±0.1	6.35±0.1	54.0±0.5	64.0±0.5	76.7±0.5
1ml standard with needle	10.85±0.1	8.65±0.1	35.7±0.5	46.7±0.5	62.7±0.5
2.25ml with needle	10.85±0.1	8.65±0.1	54.4±0.5	65.5±0.5	78.1±0.5
2.25ml luer or luer lock	10.85±0.1	8.65±0.1	56.0±0.5	65.5±0.5	\
3ml luer or luer lock	10.85±0.1	8.65±0.1	72.2±0.5	83.2±0.5	\
5ml luer or luer lock	14.45±0.1	11.85±0.1	66.7±0.5	80.0±0.5	\



Vial Caps/Seals





Pharmaceutical Rubber Stoppers

Top diameter: 12.5 \pm 0.2
Plunger diameter: 7.5 \pm 0.15
Total height: 6.7 \pm 0.3

13-A



Top diameter: 12.5 \pm 0.2
Plunger diameter: 7.7 \pm 0.15
Total height: 11.1 \pm 0.3

13-D2



13-D1



Top diameter: 12.5 \pm 0.2
Plunger diameter: 7.5 \pm 0.15
Total height: 12.2 \pm 0.3

13-D4



Top diameter: 12.6 \pm 0.2
Plunger diameter: 9.0 \pm 0.15
Total height: 11.8 \pm 0.4

Top diameter: 15.5 \pm 0.2
Top thickness: 1.65 \pm 0.15

15-P



15-A



Top diameter: 15.65 \pm 0.15
Plunger diameter: 10.2 \pm 0.15
Total height: 5.8 \pm 0.2

Top diameter: 15.6 \pm 0.2
Plunger diameter: 12.1 \pm 0.15
Total height: 12.7 \pm 0.3

15-D4



20-A



Top diameter: 18.8 \pm 0.2
Plunger diameter: 13.2 \pm 0.15
Total height: 8.8 \pm 0.4

Top diameter: 18.8 \pm 0.2
Plunger diameter: 13.3 \pm 0.15
Total height: 15.8 \pm 0.3

20-D1



20-D2



Top diameter: 18.8 \pm 0.2
Plunger diameter: 13.2 \pm 0.15
Total height: 13.8 \pm 0.3

Top diameter: 18.8 \pm 0.2
Plunger diameter: 13.2 \pm 0.2
Total height: 13.5 \pm 0.4

20-D3



20-D4



Top diameter: 18.8 \pm 0.2
Plunger diameter: 13.2 \pm 0.2
Total height: 14.3 \pm 0.4

Top diameter: 26.6 \pm 0.3
Plunger diameter: 18.0 \pm 0.2
Total height: 11.8 \pm 0.4

28-B



28-B1



Top diameter: 26.6 \pm 0.3
Plunger diameter: 20.7 \pm 0.2
Total height: 10.8 \pm 0.4

Top diameter: 30.8 \pm 0.3
Plunger diameter: 23.6 \pm 0.2
Total height: 12.2 \pm 0.4

32-A



32-A1



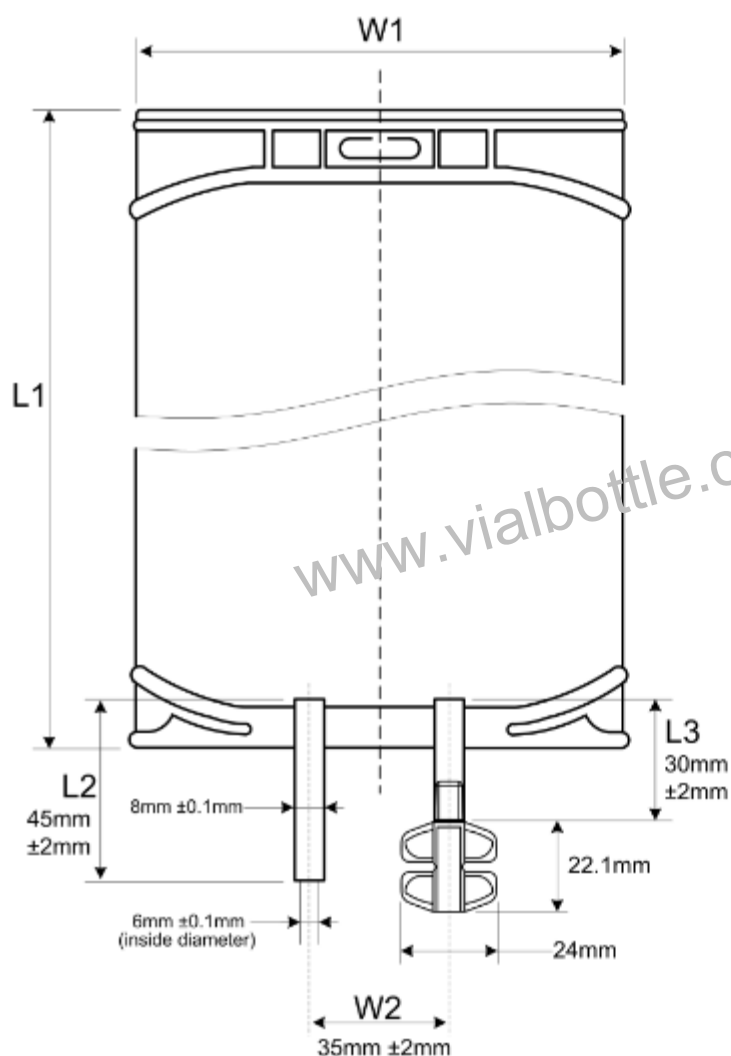
Top diameter: 30.8 \pm 0.3
Plunger diameter: 24.2 \pm 0.2
Total height: 16.0 \pm 0.4



PVC Infusion Bags



PVC Infusion Bags Drawing



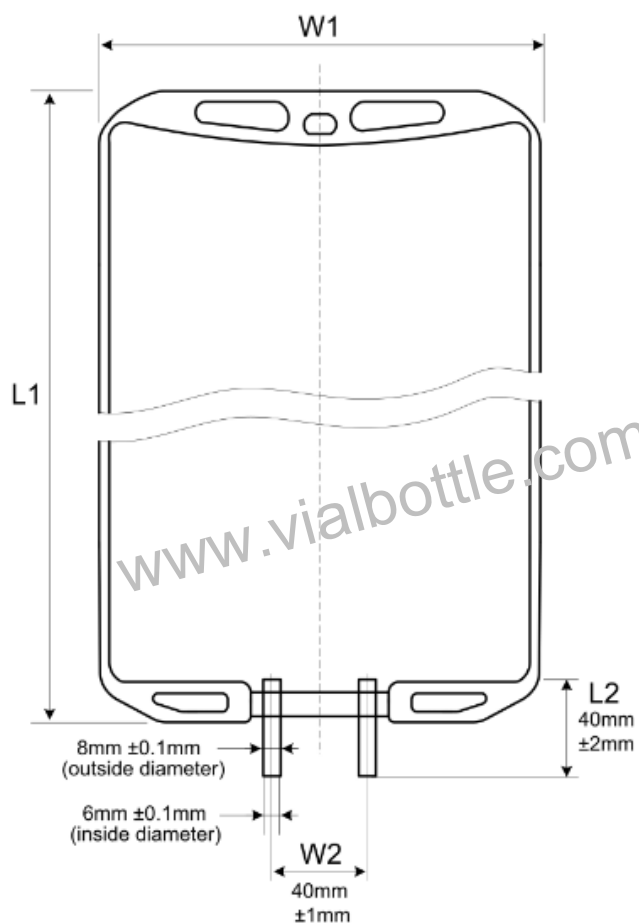
Volume	L1(mm)	W1(mm)
50ml	110 ± 3	80 ± 3
100ml	128 ± 3	90 ± 3
150ml	150 ± 3	90 ± 3
250ml	143 ± 3	120 ± 3
500ml	190 ± 3	120 ± 3
1000ml	303 ± 3	120 ± 3
2000ml	320 ± 3	180 ± 3
3000ml	370 ± 3	200 ± 3
4000ml	390 ± 3	260 ± 3
5000ml	450 ± 3	260 ± 3
Thickness of PVC film: 0.36 ± 0.04		
The dimensions are customized		



PVC Infusion Bags



NON-PVC Infusion Bags Drawing



Volume	L1(mm)	W1(mm)
100ml	120 ±3	135 ±3
250ml	160 ±3	135 ±3
500ml	220 ±3	135 ±3
1000ml	320 ±3	135 ±3
2000ml	320 ±3	195 ±3
3000ml	396 ±3	220 ±3
Thickness of PVC film: 0.25 ±0.02		
The dimensions are customized		



Auxiliary Products



玻璃瓶表面处理工艺
Surface treatment technology of glass vial

