



tele iC *tilting*

Chest stand with vertical and tilting movement of image receptor support

Product Data

Mechanical features

Height	2265 mm
Width	700 mm
Depth	825 mm (with bucky at 0°) 1205 mm (with bucky at 90°)
Vertical bucky movement	Manual balanced, with permanent magnet breaks. Unlocking button on ergonomic handle. Motorized movement in option
Vertical bucky run-length	1650 mm
Tilting movement	-20°/+90°, manual. Motorized movement in option
Receptor rotation	Manual, 0°/90° in horizontal position. Motorized movement in option
Receptor centre to floor distance	380 ÷ 2030 mm (with bucky at 0°) 420 ÷ 2070 mm (with bucky at 90°)
Chin support to floor distance	629 ÷ 2279 mm
Weight	350 kg

Bucky

Predisposition	Film cassettes, portable flat panel detectors, fixed flat panel detectors
Type	- Standard bucky for film cassettes - Rotating bucky for portable detectors in option - Bucky for fixed detectors in option
Insertion side	- Right or left for standard bucky - Bucky with double side insertion for portable cassettes (option)
Cassettes size	From 13x18 cm to 35x43 cm. (up to 43x43 cm for portable digital detectors)
Cassette centering	Semi-automatic
AEC measuring chamber	Predisposed for 3 field measuring chamber
Skin to film distance	38 mm
Grid (other models on request)	Ratio: 10:1 Focalization: 180 cm Lines/cm: 34



Grid functions	<p>Oscillating, removable on standard bucky and bucky for fixed DR detector.</p> <p>Stationary, removable on rotating bucky.</p> <p>On the frontal cover of Tele iC there is a marker displaying the number of the inserted grid</p>
----------------	--

Functions

Vertical auto-tracking (option)	<p>It requires column or ceiling suspension with motorized vertical movement predisposed for vertical auto-tracking.</p> <p>Function with double tracking movement:</p> <ul style="list-style-type: none"> - The tube automatically follows the vertical movement of the image receptor to keep the tube-receptor alignment. - The receptor automatically follows the tube when it is moved in vertical direction. <p>The function can be enabled/disabled by pressing a dedicated push-button on chest stand</p>
Stitching (option)	<p>Procedure typically dedicated to exam of vertebral column and inferior limbs. A set of exposure taken on the chest stand are automatically acquired and pasted in a single image by the digital acquisition system. Function available only with digital acquisition system, it requires floor column or ceiling suspension with touch screen interface, vertical and rotation motorized tube movement, automatic collimator. It requires the patient support for stitching</p>
Auto-positioning (option)	<p>In function of the anatomic procedure, the system automatically sets position of tube stand and tube, position of receptor, focus-receptor distance, size of collimated area. Function available only with digital acquisition system, it requires floor column or ceiling suspension with touch screen interface, all motorized movements, automatic collimator</p>

Accessories

Patient handle	Standard
Arm-rest support for lateral projections	Option



Electrical features

Power supply	110-240 Vac \pm 10% single phase
Frequency	50-60 Hz
Adsorbed current	0.9 A (110 Vac) 0.45 A (240 Vac)
Adsorbed power	103 VA (110 Vac) 102 VA (240 Vac)
Equipment type and classification (IEC 60601-1)	Class I with type B applied parts
Degree of protection (IEC 60529)	IPX0
Operating mode	Continuous

Environmental conditions

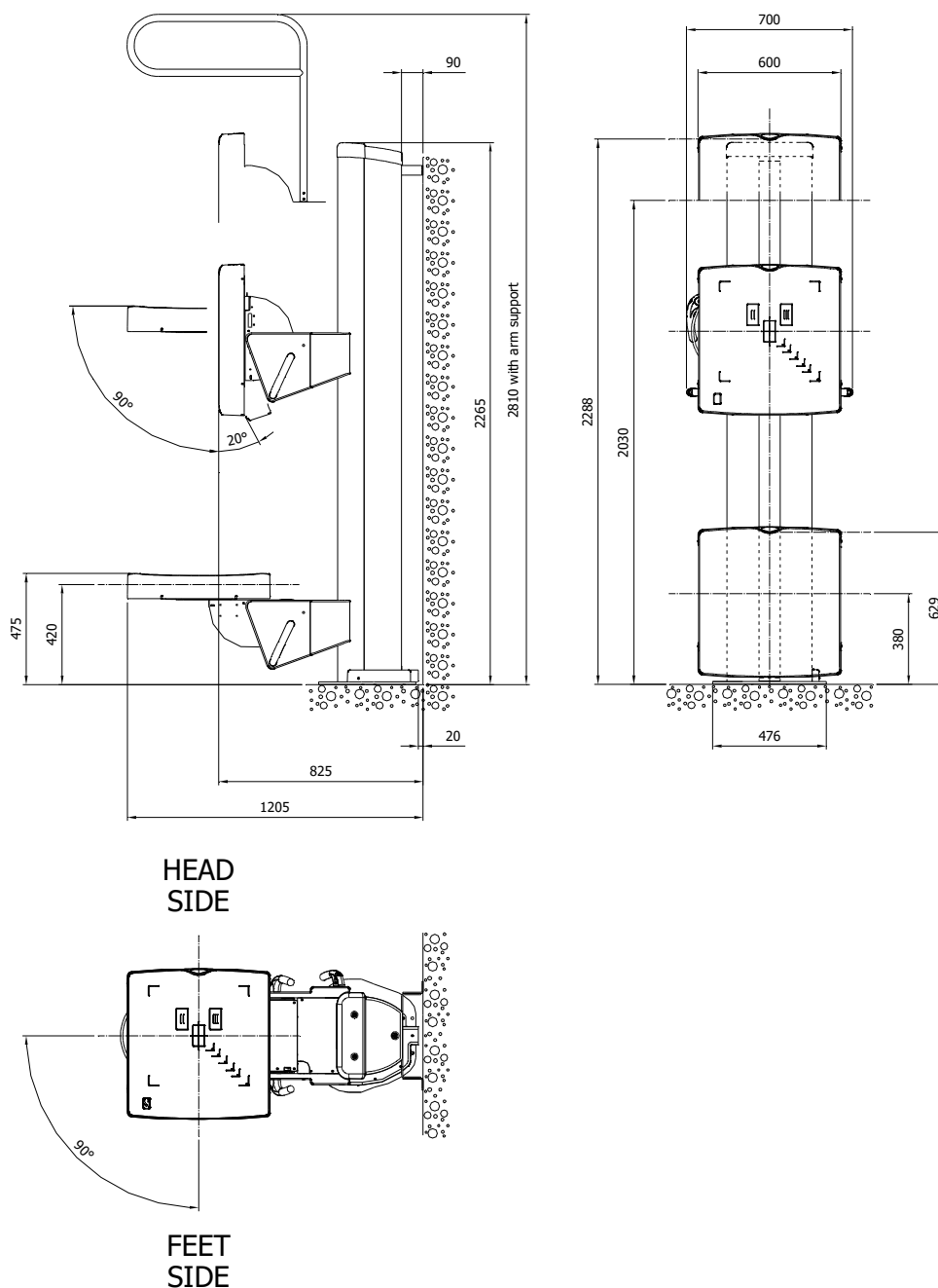
Operating conditions	Temperature: +10° to +40° Celsius Humidity: 30% to 75% Pressure: 700 hPa to 1060 hPa
Conditions for transport and storage	Temperature: -20° to +70° Celsius Humidity: 90% not condensing Pressure: 630 hPa

Standards and regulation

	CE symbol grants the product compliance to the European Directive for Medical Devices 93/42/EEC and its revised versions
---	--



Dimensions (all quotes in mm)



Note: Products are continuously under review in the light of technical advancement. The actual specification may therefore be subject to improvement or modification without notice.

VILLA SISTEMI MEDICALI s.p.a.
20090 BUCCINASCO (MI) - ITALY,
Via delle Azalee, 3
Tel. +39-02-488591, Fax +39-02-4881844

Company with Quality System certified by



ISO 9001:2015



ISO 13485:2016