

OESOPHAGUS STENTS (GEN-I)

HIGHEST QUALITY FOR EVERY INDICATION

MICRO-TECH provides you with a comprehensive selection of self-expanding stents for bypassing oesophageal stenoses. The stents are characterised by very high flexibility and are available with and without covering. The

working diameter of the stent is 20, 24 or 28 mm while lengths vary of between 60 and 140 mm. Therefore, the optimum solution is always at hand for every indication.

SPECIFIC CHARACTERISTICS

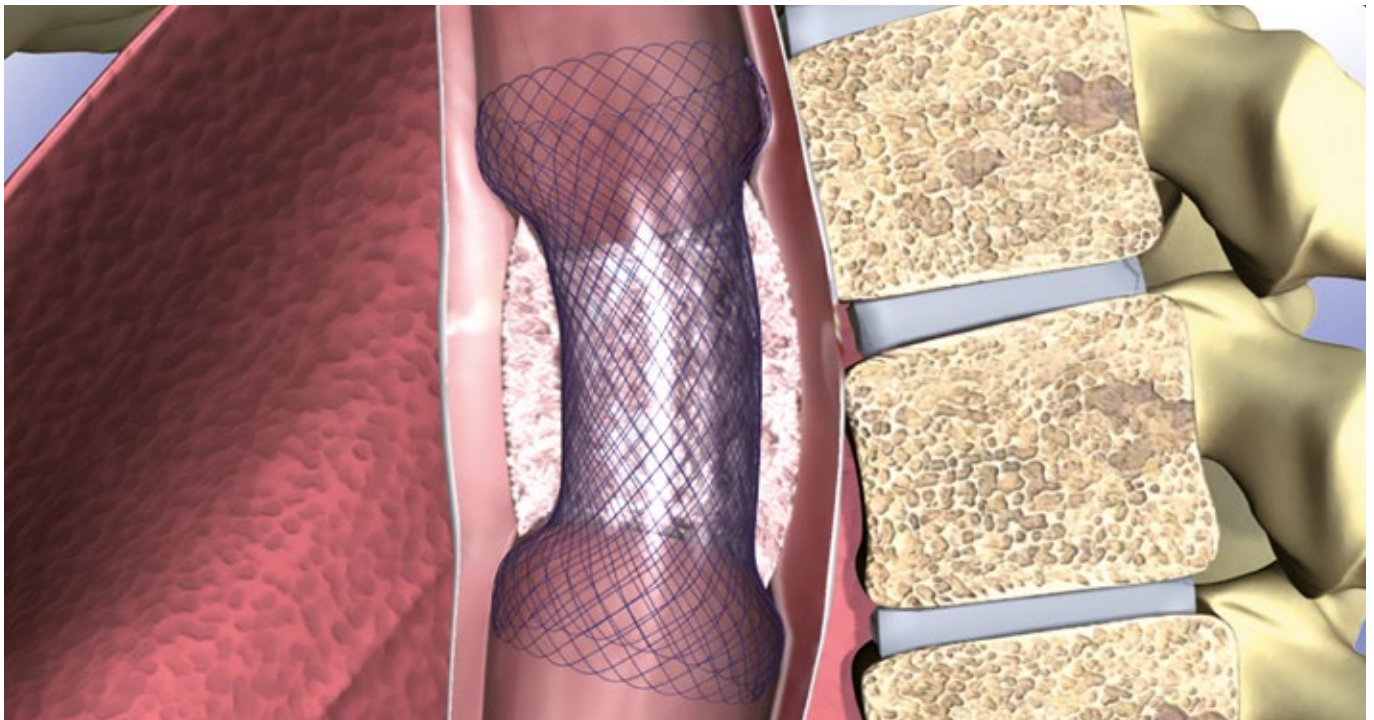
- Self-expanding
- Nitinol mesh with atraumatic ends
- Excellent positional stability
- High radial force
- Resistant and elastic covering
- Fully covered stents available
- Parylene coated
- High radiopacity
- Extraction threads for removal and repositioning
- Guide wire-compatible up to 0.035 inches



X-ray markings



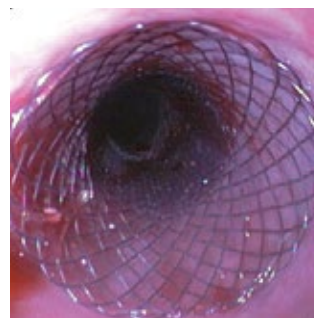
Extraction thread



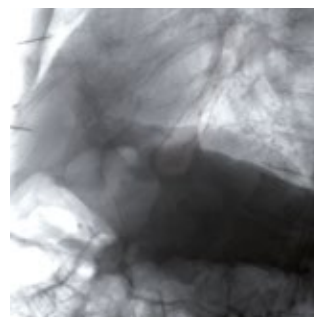
SUCCESSFUL IN PRACTICAL USE

The MICRO-TECH oesophagus stent has already proved its worth thousands of times in practice owing to its reliability, positional stability, excellent handling and the wide selection of lengths.

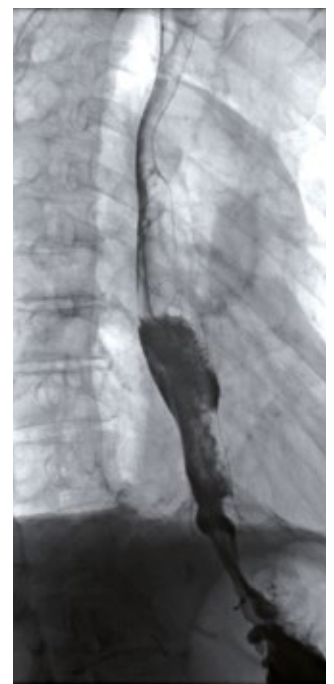
The stent adapts to the oesophageal wall in the best possible manner thanks to its atraumatic shape and high radial force. Furthermore, the stent possesses excellent radiopacity and can be positioned with good visibility and precision at significant points with the aid of the additional X-ray markings.



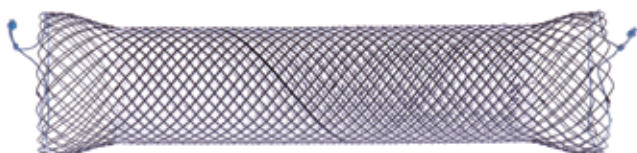
View of the proximal tulip



Released under X-ray



Control with contrast medium

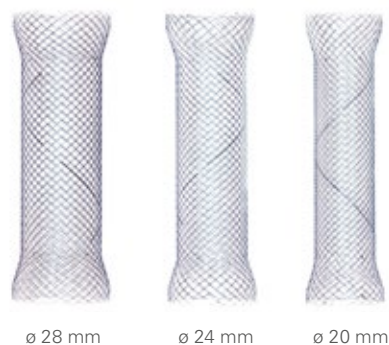
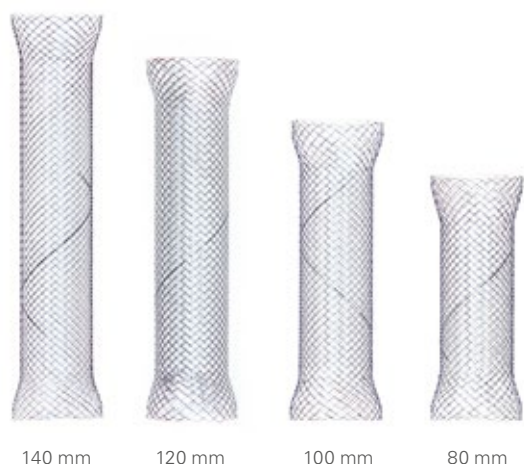


POSITIONALLY STABLE STENT DESIGN

The oesophagus stent is extremely positionally stable. Its self-expanding Nitinol wire adapts itself perfectly to the patient's anatomy and the atraumatic ends ensure a maximum hold.

DIAMETERS UP TO 28 MM

MICRO-TECH always offers you the appropriate solution with the oesophagus stent in three different diameters: 20, 24 or 28 mm in the central section. The stent end is 6 mm wider in each case.

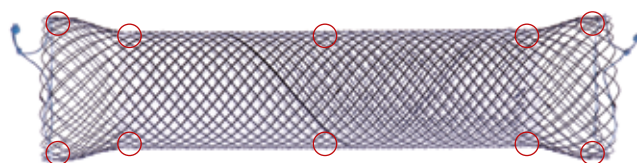


NUMEROUS STANDARD LENGTHS

Depending on the length of the site to be bypassed, you can resort to one of five standard lengths: short stents measuring 60 and 80 mm, medium lengths of 100 and 120 mm and long versions of 140 mm.

RADIOPAQUE MARKERS FOR SECURE INSERTION OF STENTS

All of our esophagus stents are equipped with up to 10 radiopaque markers. They are clearly visible under radiological control and thus enable a secure and precise stent release.



10 X-ray markers on all significant positions

WITH AND WITHOUT COVERING

Depending on the model, the stents have a protective covering. Choose between a complete covering from one stent end to the other, a partial covering in which the ends remain free and a cover-free stent.

POINT OF NO RETURN

A mark on the delivery system shows the “point of no return” at stent placement.



INTRODUCER FOR PRECISE RELEASE

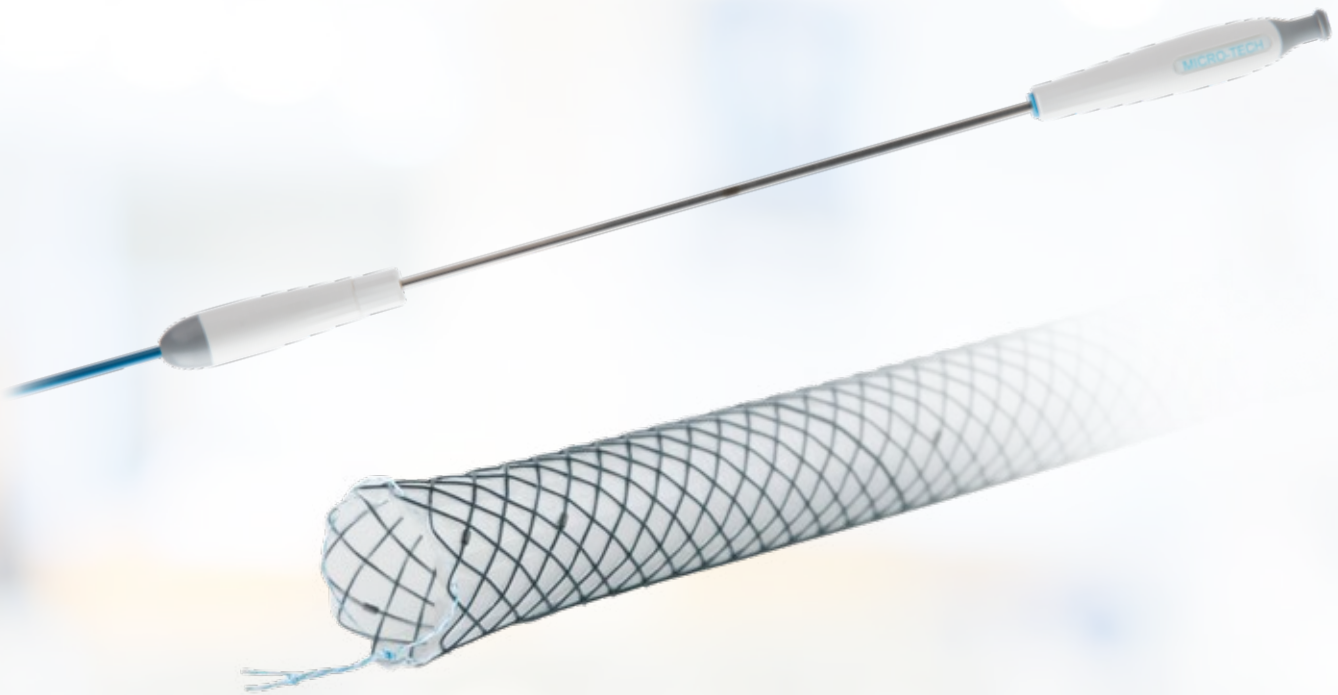
All stents are preloaded on the easy-to-manipulate introducer, which allows rapid and precise stent release. The system also allows you to bring the stent into the desired position even when in the oral cavity during release.

SPECIFICATIONS

REF	Ø centre mm	Ø end mm	Length mm	Covering mm		
STENTS WITHOUT COVERING						
ST01-101.20.080	20	26	80	Without		
ST01-101.20.100	20	26	100	Without		
ST01-101.20.120	20	26	120	Without		
ST01-101.20.140	20	26	140	Without		
ST01-101.24.080	24	30	80	Without		
ST01-101.24.100	24	30	100	Without		
ST01-101.24.120	24	30	120	Without		
ST01-101.24.140	24	30	140	Without		
STENTS WITH PARTIAL COVERING						
ST01-102.20.060	20	26	60	30		
ST01-102.20.080	20	26	80	50		
ST01-102.20.100	20	26	100	70		
ST01-102.20.120	20	26	120	90		
ST01-102.20.140	20	26	140	110		
ST01-102.24.080	24	30	80	50		
ST01-102.24.100	24	30	100	70		
ST01-102.24.120	24	30	120	90		
ST01-102.24.140	24	30	140	110		
STENTS WITH END-TO-END COVERING						
ST01-103.20.060	20	26	60	60		
ST01-103.20.080	20	26	80	80		
ST01-103.20.100	20	26	100	100		
ST01-103.20.120	20	26	120	120		
ST01-103.20.140	20	26	140	140		
ST01-103.24.060	24	30	60	60		
ST01-103.24.080	24	30	80	80		
ST01-103.24.100	24	30	100	100		
ST01-103.24.120	24	30	120	120		
ST01-103.24.140	24	30	140	140		
ST01-103.28.100	28	34	100	100		
ST01-103.28.120	28	34	120	120		
	Ø mm/Fr	Length mm	Guide wire	RM ^{*1}	IC ^{*2}	Lock ^{*3}
INTRODUCER SYSTEM						
	8/24	700	0.035 inch	2	Yes	Yes

Recommended guide wire: 600375-5

*1 RM – radiopaque markings / *2 IC – irrigation channel / *3 Lock – secures the introducer system during storage, transportation and introduction



BILIARY-STENT (GEN-II)

HIGH PRECISION IN SLIM DESIGN

The next generation of MICRO-TECH's biliary stents takes the bridging of bile-duct stenosis to a new level. Thanks to its slim design, the system can be pushed almost frictionless through the endoscope and released easily in the bile-duct. A high flexible, specially developed Nitinol wire and the tantalum markers ensure optimal placement under

X-ray vision. The range of stents are available in lengths from 40 to 100 mm as well as fully, partially and uncovered stents. Uncovered and partially covered variants are produced with a "point-of-no-return" that allows to re-insert the stent into the sheath again and make the repositioning much easier.

SPECIFIC CHARACTERISTICS

- Slimmer introducer set
- Point-of-no-return for uncovered and partially covered stents
- Stent system does not need to be flushed before application
- Stent with tantalum marker for good visibility under X-ray



Tantalum X-ray markings



Partly expanded

SPECIFICATIONS

REF	Ø mm	Length mm	Working channel mm	Covering	
STENTS STRAIGHT					
NST03-001-10.040	10	40	3.7	Without	
NST03-001-10.060	10	60	3.7	Without	
NST03-001-10.080	10	80	3.7	Without	
NST03-001-10.100	10	100	3.7	Without	
NST03-002-10.040	10	40	3.7	Partial	
NST03-002-10.060	10	60	3.7	Partial	
NST03-002-10.080	10	80	3.7	Partial	
NST03-002-10.100	10	100	3.7	Partial	
NST03-004-10.040	10	40	3.7	Complete	
NST03-004-10.060	10	60	3.7	Complete	
NST03-004-10.080	10	80	3.7	Complete	
NST03-004-10.100	10	100	3.7	Complete	
STENTS WITH EXTENDED TULIPS					
NST03-111-10.040	10/13	40	3.7	Without	
NST03-111-10.060	10/13	60	3.7	Without	
NST03-111-10.080	10/13	80	3.7	Without	
NST03-111-10.100	10/13	100	3.7	Without	
NST03-112-10.040	10/13	40	3.7	Partial	
NST03-112-10.060	10/13	60	3.7	Partial	
NST03-112-10.080	10/13	80	3.7	Partial	
NST03-112-10.100	10/13	100	3.7	Partial	
NST03-114-10.040	10/13	40	3.7	Complete	
NST03-114-10.060	10/13	60	3.7	Complete	
NST03-114-10.080	10/13	80	3.7	Complete	
NST03-114-10.100	10/13	100	3.7	Complete	
	Ø mm/Fr	Length mm	Guide wire	RM ^{*1}	Lock ^{*2}
INTRODUCER SYSTEM					
	2.5/7.5; 2.8/8.5	1800	0.035 inch	2	Yes

*1 RM – radiopaque markings / *2 Lock – secures the introducer system during transport, storage and insertion

Recommended guide wires:

Straight: MTN-BM-89/45-A, MTN-BM-63/45-A, MTN-BM-53/45-A, MTN-BM-45/45-A.

J-tip: MTN-BM-89/45-A-J, MTN-BM-63/45-A-J.