

Lot 23

Sistem videoendoscopic pentru videogastroscopie (caracteristici avansate)
Descriere Sistem video pentru investigarea și tratamentului căilor gastrice
Cod 290150 , **HD 550 with gastroscope EG550, trolley with transformer.**

Parametrul Specificația
Videoprosesor Intrări cameră ≥ 1, Da.

Imaginea HDTV / HD ≥1920x1080 pixeli- pag 6, **Processor**

- Resolution: 1920×1080, 1920×1200

Controale / caracteristici Ajustare nuanță obligatoriu
Iluminare auto, **Da,**

Brightness	Auto/Manual, 1-19 levels
------------	--------------------------

Balans de alb auto-

White Balance	Auto-saved
---------------	------------

Acuitate obligatoriu-**Da**

Videocompensare obligatoriu-**Da**

4.7.5 Image Enhancement

Press the **ENH** button on the front panel to adjust the edge enhancement level or structure enhancement level. The indicator corresponding to the selected level of edge enhancement or structure enhancement will be illuminated.

The image enhancement includes edge enhancement and structure enhancement. The structure enhancement includes two modes: Structure A and Structure B.

Image enhancement	Structure enhancement, Edge enhancement
Contrast/denoise	L/M/H , auto-denoise

Înghetarea imaginii obligatoriu

Processor

- Image freeze/storage

- Real time image freeze

Iris automat obligatoriu

IRIS	Peak/Avg/Auto
------	---------------

"Reducerea zgomotului imaginii" obligatoriu

AGC (Automatic gain control)

On/Off

Zoom electronic obligatoriu

AGC (Automatic gain control)

On/Off


leșiri RGB 1 Y/C ≥ 1 -- da, prin S-video

Remarca:

 **RGB analog**


- Poate transmite semnal de calitate înaltă, dar:
 - nu este un standard HD „garantat”
 - depinde de bandă și de echipament
- Teoretic poate reda imagini apropiate de HD în anumite sisteme, dar:
 - nu este stabil ca standard HD (720p/1080p definite clar)

 Concluzie: nu este considerat soluție HD modernă standard

 **Y/C (S-Video)**

- Este limitat la semnal analog clasic
- Lățime de bandă insuficientă pentru HD
- conceput pentru PAL/NTSC (SD)



 Concluzie: nu suportă HD

Digital (DVI, SDI, HD-SDI) obligatoriu

Video output	SDI, DVI, VGA, CVBS, S-video
--------------	------------------------------

Tehnologia de banda ingusta de culoare, care are rolul de a evidentia capilarele si structurile de pe suprafata mucoasei, pentru o mai buna delimitarea a leziunilor de la nivelul mucoasei obligatoriu

Boosted Image Performance

The 4-LED light source enables multi-spectrum and multi-mode imaging. Its versatility not only allows a superior brightness under the White Light mode, but also an uncompromised illumination under chromoendoscopy modes SFI¹ and VIST², where the vascular color contrast and mucosal structure are greatly enhanced. You will get much more from this level of image performance.

White-light Mode (Default)	SFI Mode	VIST Mode
<ul style="list-style-type: none">• Highly illuminated image• True to color• Suitable for routine observation	<ul style="list-style-type: none">• Normal-focus mode with enhanced structure and color• Supporting in detection and demarcation of the lesions	<ul style="list-style-type: none">• Near-focus mode with increased mucosal contrast• Assisting in characterization of the lesions and diagnosis

Sursa de lumină Tip lampă LED sau xenon $\geq 250W$ - LED

Timp de viață lampă ≥ 500 h- 10000 ore.

Service time	10000 hours (Continuous use)
--------------	------------------------------

pentru lampa LED echivalentul la ≥ 250 W", DA

Max. output light flux	<ul style="list-style-type: none">• VLS-55Q and VLS-55T: ≥ 1400 lm,
------------------------	---

Mod standby obligatoriu, da

6	On/Standby Button (⏻)	<ul style="list-style-type: none"> • Power off status: Press it to power on the device and the indicator lights on. • Power on status: Press it to switch the endoscope connection status; or, press it and hold for 3 seconds to power off the device on the main screen or the login screen, and the indicator lights off.
---	-----------------------	--

Periferice disponibile Display medical HD ≥ 23 inch

27' High Resolution LCD Color Monitor

"Posibilitatea de stocare a datelor prin cel puțin una din metode" "DVD / SD-card / memory stick USB / HDD portabil"- incorporate, pag 5 Processor

- Storage capacity: 500GB (standard

Data Management	500G Built-in, 5 USB, DICOM
-----------------	-----------------------------

Înregistrare a datelor pacienților (minim ID, nume, sex, data nasterii, varsta, comentariu) ≥ 50 înregistrări, Da 10000 pacienti, pag 10, 550 Processor

Digital Zoom	1.4x, 1.6x, 1.8x
Patient Data	≥ 10,000 records

8. Work Order List

- More than 10000 work orders can be created and saved into the work order list.

Usermanual processor, pag 28

Order

Patient Info

ID: ▼

*Name: ▼

Gender: ▼

Age:

Exam Info

Exam Item: ▼ Pre-exam Date: ▼

Applicant: ▼ Application Date: ▼

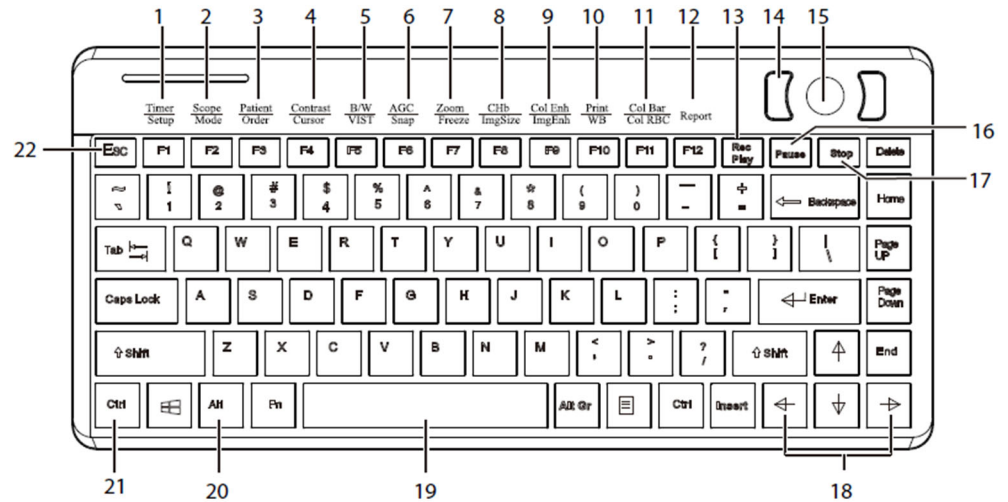
Status:

(*: Required Filed.)

Figure 4-6 Work Order

Tastatura pentru introducerea datelor, tastare multilingva care poate tasta si semnele diacritice obligatoriu

2.3 Keyboard



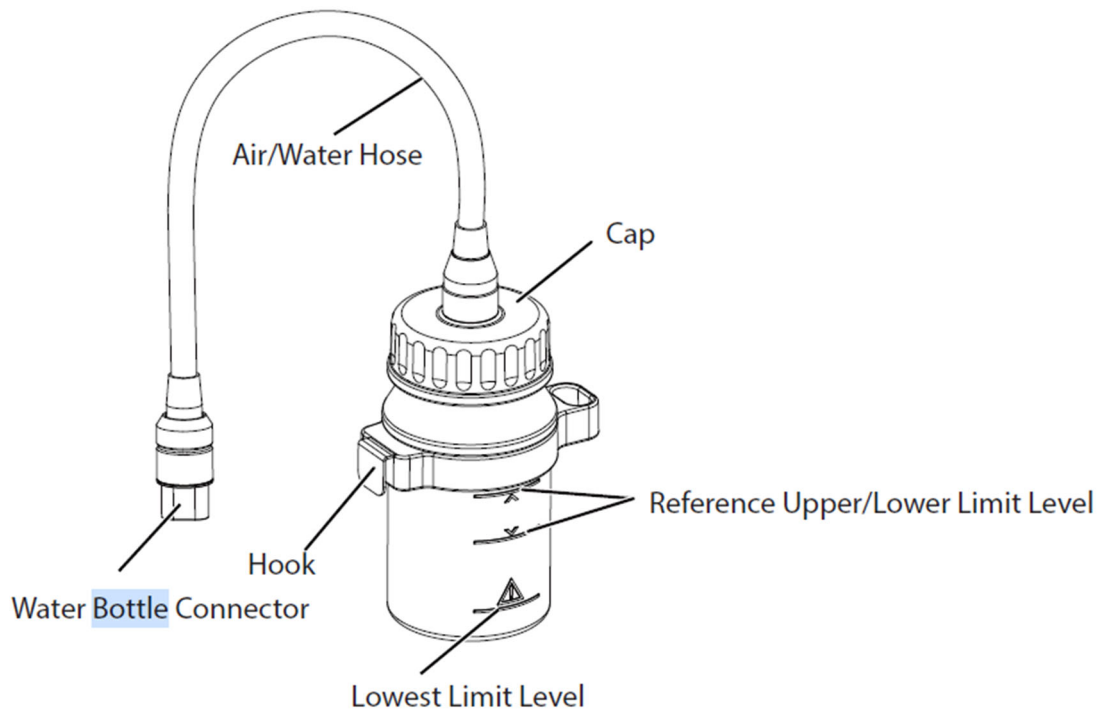
Suport pe roțile obligatoriu, **DA**

	oney cannot be moved easily.
Keyboard tray	The keyboard tray is between the top cover and the Shelf A and near to bottom of the top cover. The keyboard tray can be pulled and pushed. Ensure that it can be moved easily.

Sistem de furnizare a aerului/apelor minim 3 regimuri de lucru

Air feeding	4 levels (Off/L/M/H)
-------------	----------------------

volumul vasului pentru apă minim 250 ml, **DA**.



Sistem de aspirație Să se indice modelul oferit modelul **H002**

Tip Separat de procesor

Volumul rezervorului obligatoriu **2x 2500 ml**

Vid da

Dirijarea nivelului de aspirare în trepte

III. SPECIFICATIONS

1. Max vacuum: ≥ 90 kPa
2. Adjustable vacuum range: 20 kPa \sim Max vacuum
3. Max airflow: ≥ 20 L/min
4. Sound Level: ≤ 60 dB(A)
5. Suction bottle (glass): 2500ml/bottle, 2 bottles in a group

Accesorii:

Sursa de lumină modelul oferit 1 unit. **VLS-55Q** 1 unit.

Pompă inclusă- **DA**

0,3- 0,6 bar— extrem de mica valoare solicitata, improprie endoscopiei flexibile.

- Air-pump flow levels: high/medium/

low

- Pressure range: 45Kpa – 65Kpa

- Maximum air flow volume:

- High: 3.7L/min – 5.5L/min
- Medium: 3.0L/min – 4.7L/min
- Low: 2.0L/min – 3.7L/min

Piesă bucală 2 unit. - **Da**

Tester automat 1 unit. (să se indice modelul) -**LT-217**

LT-217™

AUTOMATIC SYSTEM TO CHECK THE INTEGRITY OF FLEXIBLE AND SEMI-RIGID ENDOSCOPES



LT-217

LT-217/B (with built-in barcode reader)

Dimensions: W 115 x D 240 x H 70 mm
Materials: Shock resistant plastic

Classification: laboratory instrument
Warranty: 12 months
Standard pump average life: 4.000 cycles

DESCRIPTION

Patented leak tester designed to check all types and brands of flexible and semi-rigid endoscopes. It verifies the integrity of the endoscope and its inner channels through a patented vacuum and pressure system. 5 different cycles are available, all customizable. Equipped with 4" display, battery charger, mini-USB connector to download cycles (cable included).

Aspirator endoscopic ≥ 0.85 bar—**0,9**

Vas de rezervă pentru aspirator $\geq 1,4$ litri, 1 unit.-2 buc. 2500 ml

Filtre pentru aspirator 5 unit.-10 buc

III. SPECIFICATIONS

1. Max vacuum: ≥ 90 kPa
2. Adjustable vacuum range: 20 kPa \sim Max vacuum
3. Max airflow: ≥ 20 L/min
4. Sound Level: ≤ 60 dB(A)
5. Suction bottle (glass): 2500ml/bottle, 2 bottles in a group

II. ACCESSORIES LIST

● Abdomen suction tube	1PC
● Suction soft tube $<\Phi 7 \times \Phi 12$, length 2m $>$	1PC
● Fuse tube $< RF2AL250V \sim / \Phi 5 \times 20 >$	2PCS
● Power cord	1PC
● Foot-switch	1PC
● Air filter	2PCS
● Manual	1PC.

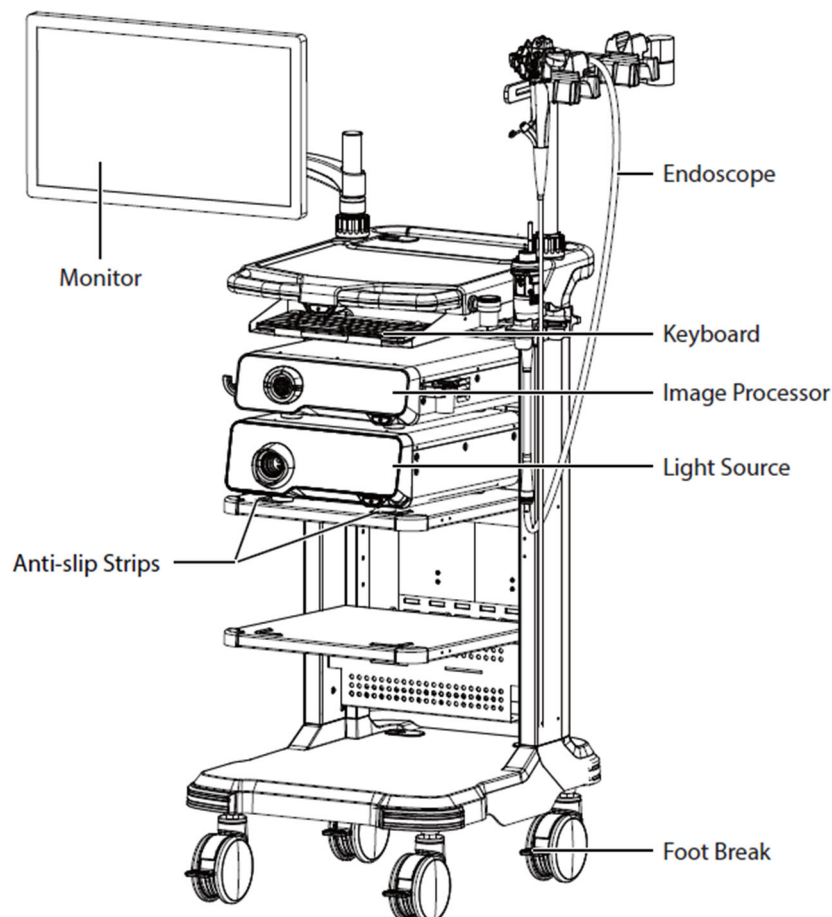
All specifications and product configurations are subject to change without notification.

Display medical HD ≥ 23 inch, să se indice modelul DSH-270WA

27" High Resolution LCD Color Monitor

Troliu cu transformator de izolare pentru excluderea electrocutării pacienților și medicilor în timpul procedurilor 1 unit. (să se indice modelul) **HDT-500 (With Transformer) (brosura anexată)**

Polițe reglabile la înălțime sau fixe 4 unit. -5 unit



Videogastroscoop Să se indice modelul oferit modelul **EG-550**.

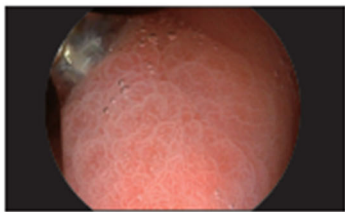
Tip HDTV / HD ≥ 1920x1080 pixeli

**HD-550,
Full High Definition Video Endoscopy System**

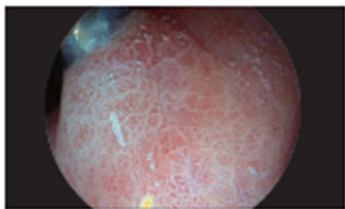
Compatibilitatea cu Tehnologia de banda ingusta de culoare, care are rolul de a evidentia capilarele si structurile de pe suprafata mucoasei, pentru o mai buna delimitarea a leziunilor de la nivelul mucoasei obligatoriu

- When switching among the variable intelligent staining technology (VIST) mode and the common illumination mode, the image would be interfered. Therefore, do not operate the endoscope or perform a treatment while switching. Otherwise, it may result in personal injury.

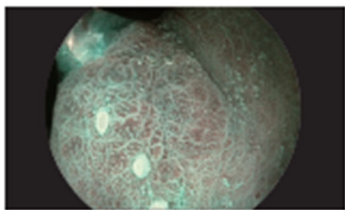
White-light Mode (Default)	SFI Mode	VIST Mode
<ul style="list-style-type: none"> • Highly illuminated image • True to color • Suitable for routine observation 	<ul style="list-style-type: none"> • Normal-focus mode with enhanced structure and color • Supporting in detection and demarcation of the lesions 	<ul style="list-style-type: none"> • Near-focus mode with increased mucosal contrast • Assisting in characterization of the lesions and diagnosis



White Light



SFI



VIST

¹SFI: Spectral Focused Imaging

²VIST: Variable Intelligent Staining Technology

Tubul de inserție Lungime totală ≥ 1300 mm—**1350 mm**

Technical Parameters		Product
		EG-550
Dimensions	Total length	1350 mm

Lungime de lucru ≥ 1000 mm ---1050 mm

Diametrul exterior ≤ 9.3 mm---9,3 mm

Marcaj de lungime da

Canal de lucru Numărul de canale ≥ 1 , Da

Diametrul $\geq 2,8$ mm ----2,8 mm

Optica Unghiul câmpului vizual ≥ 140 grade, Da

Înclinația câmpului vizual 0 grade Da

Adâncimea câmpului vizual 2-100 mm, 3-100 mm- parametru alternativ

Tipul și unghiurile de deflecție Sus/jos 210/90 grade, Da

Stînga/dreapta 100/100 grade Da

550 SERIES SCOPES

	EG-550	EG-550L	EC-550	EC-550T	EC-550L	EC-550L/T
Field of view	140°	140°	140°	140°	140°	140°
Depth of view	3-100mm	3-100mm	3-100mm	3-100mm	3-100mm	3-100mm
Distal End Dia.	9.3mm	9.8mm	12mm	12mm	12.9mm	12.9mm
Insertion Dia.	9.3mm	9.8mm	12.5mm	12.5mm	12.9mm	12.9mm
Instrument Dia.	2.8mm	3.2mm	3.8mm	3.8mm	4.2mm	4.2mm
Angulation	U210°, D90°, L/R100°		U/D180°, L/R160°			
Working length	1050mm	1050mm	1350mm	1700mm	1350mm	1700mm
Water Jet	Yes	Yes	Yes	Yes	Yes	Yes
OneTouch	Yes	Yes	Yes	Yes	Yes	Yes
Optical Fiber Trans	Yes	Yes	Yes	Yes	Yes	Yes

Funcționalitatea mîinerului de dirijare butoane ≥ 4

înghețarea imaginii obligatoriu

eliberarea imaginii obligatoriu

capturare imaginii obligatoriu

reglarea intensității lumii obligatoriu

reglarea tonului de culoare (filtre optice) obligatoriu

modificarea contrastului obligatoriu

zoom electronic obligatoriu

Remote Buttons (0/1/2/3), Left /right pedal of footswitch	Freeze	Click it to enable/disable the image-freezing function.
	Zoom	Click it to select the image magnification levels (L1/L2/L3).
	VIST	Click it to select the illumination mode.
	IRIS	Click it to select photometry modes (Ave, Peak and Auto).
	Img Enh	Click it to switch among the levels of edge enhancement or structure enhancement (L1/L2/L3).
	Col Enh	Click it to switch among the three levels of color enhancement (L1/L2/L3).
	CHb	Click it to adjust the size of CHb pseudo-color image.
	Transparent	Click it to enable/disable transillumination feature.
	Contrast	Click it to select the image contrast levels.
	AGC	Click it to enable/disable automatic gain feature.
	ImgSize	Click it to enter/exit full-screen mode.
	Snap	Click it to save the current endoscopic image..
	Video Print	Click it to print the endoscopic image.
	Record	Click it to start/stop recording.
	Timer	Click it to start/pause time keeping.
	PBP	After the endoscopic image is frozen, click it to enable/disable the picture by picture (PBP) feature.
	Other	Content display
Fast Export		Select it on the main screen to directly export the image or video saved currently.
Fast Upload		Select it on the main screen to upload images and the report saved currently to the DICOM server.
IRIS		Set the photometry mode.
Contrast		Set the image contrast.
	Save Automatically	Tick it to save the value of IRIS and levels of ZOOM, ENH and COLOR in the current mode during shutdown or logout.

Spălarea obiectivului obligatoriu

2.2.3 Distal End

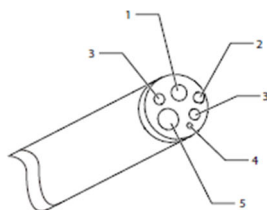


Figure 2-4 Distal End

No.	Part Name	Description
1	Objective Lens	Used for transmitting optical signals of the tissue image to be observed to the sensor.
2	Air/Water Nozzle	Used as an outlet for feeding air or water.
3	Light Guide Lens	Light is transmitted through these lenses to assist endoscopic image observation.
4	Auxiliary Water-feeding Outlet	Water spurts out from this outlet.
5	Instrument Channel Outlet	Used as an instrument (such as biopsy forceps) outlet, liquid feeding outlet or suction inlet.

Metode de sterilizare Chimic- **Da**

Etilen oxid opțional- **Da**

Posibilitatea de a se efectua multiple proceduri de sterilizare proceduri de sterilizare minim o metodă de sterilizare- **Da**

HD-550 Endoscopy System	
PART NO.	DESCRIPTION
Standard Configuration(Gastro&Colonoscope System Package)	
	HDT-550 Trolley system (With or Without Isolated Transformer)
	Color Monitor 27"
	Video Gastroscope (EG-550 series gastroscope, including one scope only)
	Video Colonoscope (EC-550 series colonoscope, including one scope only)
	Light Source: VLS-50 series LED light source (VLS-50D or VLS-50T)
	Image Processor: HD-550
	Keyboard
	Suction Machine
Optional Parts	
	HDT-500 Trolley system
	HDT-500 Trolley system with Isolated Transformer
	Barco 26"
	Video Gastroscope EG-550:Φ9.3*1050mm, 2.8mm working channel
	Video Gastroscope EG-550L: Φ9.8*1050mm, 3.2mm working channel
	Video Colonoscope EC-550:Φ12*1350mm, 3.8mm working channel
	Video Colonoscope EC-550T:Φ12*1700mm, 3.8mm working channel
	Video Colonoscope EC-550L:Φ12.9*1350mm, 4.2mm working channel
	Video Colonoscope EC-550L/T:Φ12.9*1700mm, 4.2mm working channel
	Image Processor HD-550
	VLS-50D
	VLS-50T