

# TONTARRA

## ENDOSCOPY



## ENDOOR - TOWER



## ABOUT US

For more than 50 years “made by TONTARRA, Germany” is a synonym for state-of-the-art surgical and endoscopic instruments and equipment.

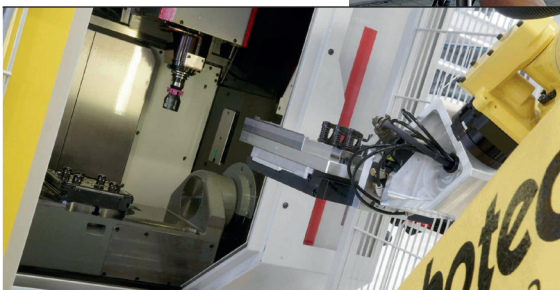
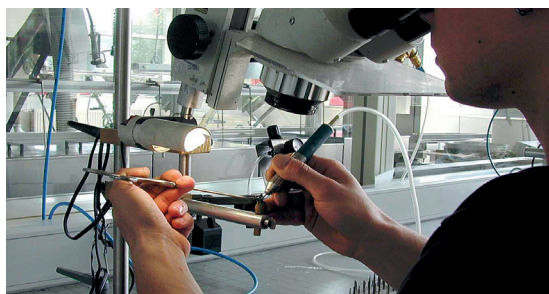
This success and the international recognition of the skillfulness in surgical and endoscopic instrument making of Tontarra Medizintechnik GmbH are based on our commitment to medical innovation, mastery in manufacturing, and a strong focus on our continuing tradition of excellence.

The confidence in our surgical and endoscopic lines as expressed by our international customers, distribution- and OEM-partners are a driving force to face and meet new challenges.

# TONTARRA



Indispensable ‘tools’ for maturing new ideas into high-precision surgical instruments of highest precision include our state-of-the-art manufacturing facility and production processes, and especially the comprehensive technical know-how, ingenuity and strong commitment of our entire team.



## TABLE OF CONTENT

|                   |         |
|-------------------|---------|
| ▶ Camera Models   | 4 – 5   |
| ▶ Camera Features | 6 – 7   |
| ▶ Camera Heads    | 8 - 10  |
| ▶ Light Source    | 11      |
| ▶ Pumps           | 12 – 14 |
| ▶ Insufflator     | 15 - 16 |
| ▶ Video Recorder  | 17      |
| ▶ Equipment Cart  | 18      |
| ▶ Monitors        | 19      |

# EndoorCam 10

Camera Models

## EndoorCam 10 Full HD camera:

Maximum compatibility of a high performance camera system to existing infrastructures.



An endoscopic camera controller for best in class image quality.

**Edge enhancement, automatic gain control (AGC) and dynamic contrast function** guarantee a best in class performance.

Time saving **camera presets** for Laparoscopy, Arthroscopy, Gynecology, Urology, ENT, Neuroendoscopy and Fiberscope complete the user-friendliness.

**Two different camera heads** for use with DIN ocular endoscopes:

- Camera Head Full HD Zoom
- Camera Head Full HD Fix 90° Angled

Enabling use in different medical departments and application areas.



## EndoorCam 10

Art.No. SCHO/95-3930 \*

### Controller Full HD USB image capture

- ▶ Full HD USB image capture
- ▶ Multi-connectivity
- ▶ Videoalgorithms: selective color enhancement, smoke reduction, grid removal

| TECHNICAL DATA          |  |
|-------------------------|--|
| Art.No. SCHO/95-3930    | Controller Full HD USB image capture                                       |
| Operation control panel | On-Off, menu, white balance, photo   |
| Video outputs           | High definition: 2 x DVI (1080 p),<br>2 x HD-SDI (1080i)                   |
| Remote outputs          | 2 x 3.5 mm phone jack connectors<br>(to connect recording/printer devices) |
| Remote inputs           | 2 x 3.5 mm phone jack connectors<br>(to connect a foot control switch)     |
| Connectivity            | SCHÖLLY MIS-Bus interface  |
| Dimensions/Weight       | 295 x 100 x 355 mm (W x H x D) / 4.39 kg                                   |
| SYSTEM                  |  |
| Standard compliance     | IEC 60601-1 2 <sup>nd</sup> and 3 <sup>rd</sup>                            |
| Directive compliance    | CE-mark  |
| Power connection        | 100 - 240 V AC, 50/60 Hz   |
| Power consumption       | 0.8 - 0.4 A  |

\* Original Manufacturer Product of SCHÖLLY



# EndoorCam 20

Camera Models

## EndoorCam 20 Native Full HD camera:

An endoscopic camera controller par excellence with integrated USB port for full HD image and video capturing.



Recording made easy via controller button or via illuminated camera head button.

First class **images & videos** based on state-of-the-art technologies.

Equipped with a **Native Full HD resolution** for capturing and storing images and video recordings via USB in Full HD.

Different **video algorithms** contribute to the excellent picture quality: Color shift 1+2, selective color enhancement, smoke reduction, grid removal and picture out of picture mode for the video algorithms.

In combination with the **EndoorLight 300 LED light source**, the patented **automatic light control** offers an additional advantage for user and patient.

For **maximum image quality** the **3CMOS** Camera Head is recommended.



## EndoorCam 20

Art.No. SCHO/95-3970 \*

### Controller Full HD

### USB image / video capture / advanced image features

- ▶ Full HD USB image / video capture
- ▶ Multi-connectivity
- ▶ Videoalgorithms: color shift 1 + 2, selective color enhancement, smoke reduction, grid removal
- ▶ Picture out of picture modus at use of video algorithms
- ▶ Automatic light control in combination with EndoorLight 300 LED light source
- ▶ Compatible with all Endoor HD Camera Heads

| TECHNICAL DATA                            |  |
|---|--|
| Art.No. SCHO/95-3970                      | Controller Full HD USB image / video capture                               |
| Operation control panel                   | On-Off, menu, white balance, photo, video                                  |
| Video outputs                             | High definition: 2 x DVI (1080 p),<br>2 x 3G-SDI (1080i)                   |
| Interfaces Remote outputs                 | 2 x 3.5 mm phone jack connectors<br>(to connect recording/printer devices) |
| Interfaces Remote inputs                  | 2 x 3.5 mm phone jack connectors<br>(to connect a foot control switch)     |
| Interfaces USB Keyboard / Drive           | 2 x USB  |
| Connectivity                              | SCHÖLLY MIS-Bus interface  |
| Dimensions/Weight                         | 295 x 100 x 355 mm (W x H x D) / 5.7 kg                                    |
| SYSTEM                                    |  |
| Standard compliance                       | IEC 60601-1  |
| Electromagnetic compatibility             | IEC/EN 60601-1-2   |
| Directive compliance                      | CE-mark  |
| Supply voltage                            | 100 - 240 V-, 50/60 Hz   |
| Current consumption                       | 0.8 - 0.4 A  |
| Protection class as per IEC 60601-1       | Protection class I   |
| Degree of protection                      | IP 21  |
| Classification as per Directive 93/42/EEC | Class I medical device   |
| Classification as per IEC/CISPR 11        | Group 1 Class B  |

\* Original Manufacturer Product of SCHÖLLY

# EndoorCam Features

## Camera features

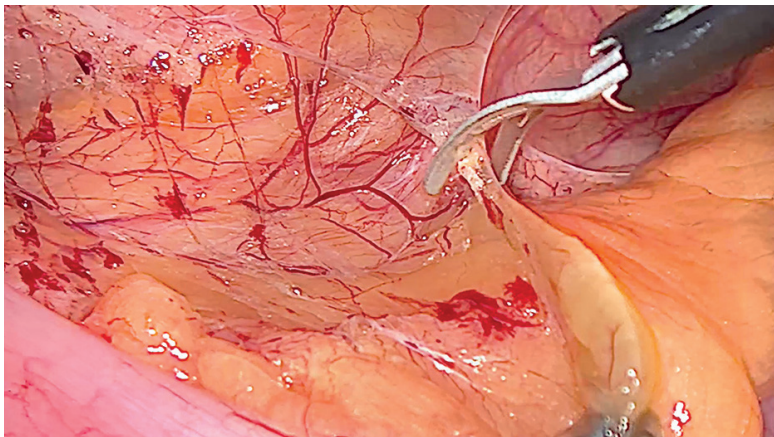
### EndoorCam – NATIVE FULL HD RESOLUTION



#### No compromise in image quality

Latest CMOS chip technology integrated in the **EndoorCam** native full HD endoscopy camera systems provides a brilliant image quality with highest sensitivity. Edge enhancement, dynamic contrast function and various video algorithms lead to a vivid, crystal clear image.

Vessels and tissue structures can be highlighted, the view during HF or laser applications can be improved or the honeycomb structure of image bundle endoscopes can be reduced. All these details and technologies lead to this best-in-class camera solution.



#### ▶ Video Algorithm Color Shift 1 + 2

The range of advanced imaging algorithms is completed with „Color Shift“ modes. Spectral colors are shifted and exchanged. It can be used to enhance vessels and tissue structures.

#### ▶ Picture out of picture mode (POP)

User can display the image improved by video algorithm either in fullscreen or use it side by side, with the original image, both on the same monitor in PoP-mode.

#### ▶ Automatic Light Control

Perfect integration of LED light source and camera through MIS-Bus. The light source can be switched on and off and regulated in brightness through the camera controller and camera head buttons. The camera can even control the luminance of the light source fully automatic.

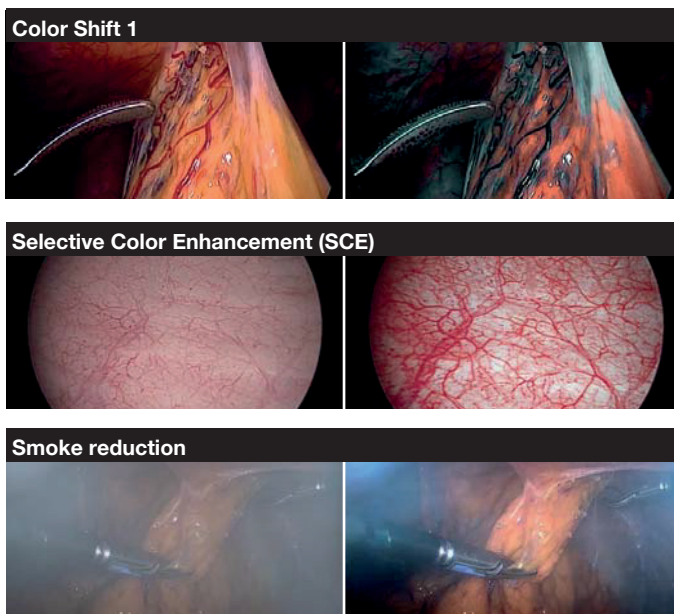
#### ▶ OR-Integration Module

As an option the camera can be controlled by your integrated OR system. The whole camera menu can be accessed by your OR control system. Additionally we offer solutions for still image archive and video streaming though Ethernet hospital network to a KIS/PACS system

# EndoorCam Features

## Camera features

### EndoorCam – NATIVE FULL HD RESOLUTION



| System overview   | EndoorCam 10<br>SCHO/95-3930 | EndoorCam 20<br>SCHO/95-3970 |
|---|------------------------------|------------------------------|
| Video algorithms  |                              |                              |
| ▶ Selective color enhancement   | ✓                            | ✓                            |
| ▶ Smoke reduction   | ✓                            | ✓                            |
| ▶ Grid removal  | ✓                            | ✓                            |
| ▶ Clear view  | optional                     | optional                     |
| ▶ Color Shift 1 + 2   | -                            | ✓                            |
| Picture out of picture mode (PoP)<br>for all above mentioned algorithms | -                            | ✓                            |
| Integrated galvanic insulation for use<br>with chip-in-tip endoscopes   | -                            | ✓                            |
| Compatibility with future camera<br>heads e.g. autoclavable heads       | ✓                            | ✓                            |
| Full HD USB image capture   | ✓                            | ✓                            |
| Full HD USB video capture   | -                            | ✓                            |
| Automatic light control with<br>NEW LED light source                    | -                            | ✓                            |
| OR integration module   | -                            | optional                     |
| Camera Head Full HD Zoom  | ✓                            | ✓                            |
| Camera Head Full HD Fix 90° Angled                                      | ✓                            | ✓                            |
| Camera Head Full HD 3CMOS Zoom  | -                            | ✓                            |

- ▶ **Color Shift 1**  
Enhances vessels and tissue structures. Spectral colors are shifted and exchanged; with a stronger effect.
- ▶ **Color Shift 2**  
Enhances vessels and tissue structures. Spectral colors are shifted and exchanged; with a weaker effect.
- ▶ **Selective Color Enhancement**  
Enhances vessels and tissue structures with higher color contrast. The original color impression remains.
- ▶ **Smoke reduction**  
For a clear view during dissection technologies that create smoke (e.g. HF).
- ▶ **Grid removal**  
Reduces the honeycomb structure of image bundle endoscopes.
- ▶ **Clear view**  
For a clear view during operations in hazy liquids (e.g. Arthroscopy)

# EndoorCam

## Camera Heads

### EndoorCam Camera Head Full HD Zoom: For a wide variety of endoscopic applications



Lightweight & ergonomic

Three individually programmable and illuminated keys.

Manually adjustable focal length of 14.25 - 28 mm.

Illuminated control buttons for easy identification in dark OR.

Designed to ensure that the full HD image remains sharp when zooming.

All-purpose 2 x optical zoom offers full screen laparoscopic images.



### Camera Head Full HD Zoom

Art.No. SCHO/95-3901 \*

### Designed for a variety of endoscopic applications

- ▶ Full HD sensor resolution
- ▶ Illuminated control buttons
- ▶ 2x optical zoom
- ▶ 3x digital zoom
- ▶ Lockable endoscope connection
- ▶ Time saving and useful presets
- ▶ All rigid, flexible or semi-flexible endoscopes with standard ocular can be connected

| TECHNICAL DATA                     |  |
|------------------------------------|--|
| Art.No. SCHO/95-3901               | Camera Head Full HD Zoom                   |
| Image sensor                       | 1/3" CMOS, progressive scan                |
| Sensor resolution                  | 1920 x 1080, 50/60p                        |
| Function keys                      | 3 individ. programmable & illuminated keys |
| Endocoupler                        | For standard ocular, lockable              |
| Parfocal zoom                      | f = 14.25 - 28 mm                          |
| Waterproof connection plug         | Yes  |
| Lockable endoscope connection      | Yes  |
| Length camera cable                | 3.5 m                                      |
| Weight camera head (without cable) | 210 g                                      |
| Control unit compatibility         | EndoorCam 10 & EndoorCam 20                |

\* Original Manufacturer Product of SCHÖLLY



# EndoorCam

## Camera Heads

**EndoorCam Camera Head Full HD Fix 90° Angled:**  
Especially useful for urologic and gynecologic procedures



One focus ring with a focal length of 14.25 mm.

Illuminated control buttons for easy identification in dark OR.

Endocoupler has a 90° angle so that the camera cable does not hinder the surgeon during the treatment.

Self-aligning to keep the horizon fixed while turning the endoscope.

The rotation can be stopped using the pendulum locking lever.

Low weight and long camera cable enables a long procedure time with maximal freedom of movement.



**Camera Head Full HD Fix 90° Angled**

Art.No. SCHO/95-3903 \*

| TECHNICAL DATA                     |   |
|------------------------------------|---|
| Art.No. SCHO/95-3903               | Camera Head Full HD Fix 90° Angled              |
| Image sensor                       | 1/3" CMOS, progressive scan                     |
| Sensor resolution                  | 1920 x 1080, 50/60p                             |
| Function keys                      | 3 individ. programmable & illuminated keys      |
| Endocoupler                        | For standard ocular, freely rotating & lockable |
| Focal length                       | f = 14.25 mm                                    |
| Waterproof connection plug         | Yes   |
| Lockable endoscope connection      | Yes   |
| Length camera cable                | 3.5 m   |
| Weight camera head (without cable) | 190 g   |
| Control unit compatibility         | EndoorCam 10 & EndoorCam 20                     |

### Designed for urology, gynecology and ENT surgeries

- ▶ Full HD sensor resolution
- ▶ Illuminated control buttons
- ▶ Lightweight and slim design
- ▶ 3x digital zoom
- ▶ Lockable endoscope connection
- ▶ Time saving and useful presets
- ▶ All rigid, flexible or semi-flexible endoscopes with standard ocular can be connected

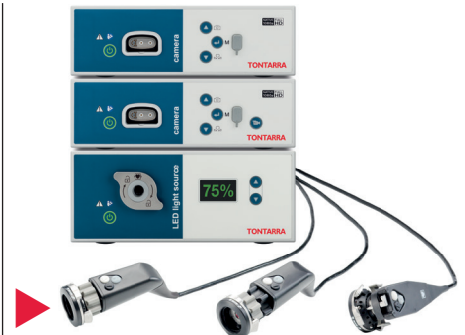
\* Original Manufacturer Product of SCHÖLLY

# EndoorCam

## Camera Heads

### EndoorCam Camera Head **Native Full HD 3CMOS Zoom:**

For excellent color reproduction



Exceptionally ergonomic 3CMOS head for the EndoorCam 20 camera platform.

Illuminated control buttons for easy identification in dark OR.

All-purpose 2 x **optical** zoom for full screen laparoscopic images as well as circular images of small endoscopes (e.g. arthro, uro, fiber).

Lockable endoscope connection for safe use.

Compatible for STERRAD sterilization.



### Camera Head **Full HD 3CMOS Zoom**

Art.No. SCHO/95-3906 \*

| TECHNICAL DATA                     |  |
|------------------------------------|--|
| Art.No. SCHO/95-3906               | Camera Head Full HD 3CMOS Zoom             |
| Image sensor                       | 3 x 1/3" CMOS, progressive scan            |
| Sensor resolution                  | 3 x 1920 x 1080, 50 / 60p                  |
| Function keys                      | 3 individ. programmable & illuminated keys |
| Endocoupler                        | For standard ocular, lockable              |
| Parfocal zoom                      | f = 14.25 - 28 mm                          |
| Waterproof connection plug         | Yes  |
| Lockable endoscope connection      | Yes  |
| Length camera cable                | 3.5 m                                      |
| Weight camera head (without cable) | 300 g                                      |
| Applied part as per IEC 60601-1    | Type CF defibrillation-proof               |
| Control unit compatibility         | EndoorCam 20                               |

### Outstanding performance

- ▶ 3CMOS sensor, native Full HD
- ▶ Best color reproduction due to 3CMOS sensor design
- ▶ 2x optical zoom (plus 3x digital zoom)
- ▶ Unique lockable endoscope connection
- ▶ STERRAD compatible
- ▶ Time saving and useful presets
- ▶ All rigid, flexible or semi-flexible endoscopes with standard ocular can be connected
- ▶ Illuminated control buttons

\* Original Manufacturer Product of SCHÖLLY

# EndoorLight 300

Light Source

**EndoorLight 300 luminous intensity LED light source:**  
 Unique high Color Rendering Index (CRI): Ra > 90



Universal LED light source for all applications comparable to 300 W Xenon.

**Patented fully automatic light control**, permitting reliable and efficient use in combination with the **EndoorCam 20** camera.

**Quick adjustment** by the user via camera control unit or camera head button.

**Very silent** during use.

The **multi-light guide adapter** allows the use of light guides from Storz, Wolf and Olympus.

**Bus system** for easy connection to camera.



**EndoorLight 300 LED**  
 Art.No. SCHO/05-0760led \*

| TECHNICAL DATA                             |   |
|--|---|
| Art.No. SCHO/05-0760led                    | EndoorLight 300 LED                                     |
| Illumination type                          | High power white light LED                              |
| Color Rendering Index                      | CRI Ra > 90   |
| Color temperatue                           | 5,600 K   |
| Luminous flux                              | 1,420 lm  |
| Lifetime of the illuminant                 | > 30.000 h  |
| Operation control panel                    | LCD Display with illuminated buttons                    |
| Standard compliance                        | IEC 60601-1 (3.1 Edition)                               |
| Electromagnetic compatibility              | IEC/EN 60601-1-2 (3 <sup>rd</sup> and 4 <sup>th</sup> ) |
| Directive compliance                       | CE-mark   |
| Dimensions (W x H x D)                     | 295 x 130 x 355 mm                                      |
| Weight                                     | 8 kg  |
| Supply voltage                             | 100 - 240 V~, 50/60 Hz                                  |
| Power consumption                          | 1.6 - 0.6 A   |
| Protection class acc. to IEC 60601-1       | Protection class I                                      |
| Degree of protection                       | IP21  |
| Applied part as per IEC 60601-1            | Type CF defibrillation-proof                            |
| Classification acc. to Directive 93/42/EEC | Class I medical device                                  |
| Classification as per IEC/CISPR 11         | Group 1 Class B   |

## Light Source

- ▶ High color rendering index (CRI): RA > 90
- ▶ Low noise level
- ▶ Multi-light-guide adapter
- ▶ Automatic light control in combination with EndoorCam 20
- ▶ Meets high requirements for CF with defibrillators

\* Original Manufacturer Product of SCHÖLLY

# Multi Indication Pump

Pumps

## MULTI-INDICATION PUMP – One pump, four indications

The **Multi-Indication Pump** facilitates everyday routine hospital activities.

The ingenious device combines a streamlined design, easy operation, and maximum safety.

Key parameters are seen at a glance, allowing for quick and correct actions by personnel.

Transponders for each of the applications have to be ordered additionally (see page 14 / Accessories).



### Multi-Indication Pump

Art.No. WOMO/PM304-M01 \*

#### Multi Indication:

- ▶ Laparoscopy
- ▶ Arthroscopy
- ▶ Hysteroscopy
- ▶ Urology

| TECHNICAL DATA         |   |
|------------------------|---|
| Art.No. WOMO/PM304-M01 | Multi-Indication Pump   |
| Pressure range         | Laparoscopy: not adjustable<br>Arthroscopy: 5 - 150 mmHG<br>Hysteroscopy: 15 - 150 mmHG<br>Urology: 15 - 150 mmHG         |
| Flow range             | Laparoscopy: 1.0 - 1.8 l/min<br>Arthroscopy: 0.1 - 1.8 l/min<br>Hysteroscopy: 50 - 500 ml/min<br>Urology: 50 - 500 ml/min |
| Suction capacity       | Max. 2 l/min (depending on outflow cannula)   |
| Power supply           | 100 - 240 V~  |
| Frequency              | 50 - 60 Hz  |
| Power consumption      | 80 VA   |
| Current consumption    | 100 V: 0.8 A<br>240 V: 0.3 A  |
| Classifications        | Protection Class I, Type BF, IP 41  |
| Dimensions (W x H x D) | 381 x 149 x 379 mm  |
| Weight                 | 6.3 kg  |

\* Original Manufacturer Product of WOM



# Lap Pump

**Pumps**

**LAP-PUMP** – One device, two functions:  
suction & irrigation



With a built-in vacuum pump, the **LAP-Pump** combines irrigation and suction functionality in one device – which makes it the device of choice for minimally invasive surgeries.

A suction and irrigation volume of 3 l/min and a pressure performance of up to 450 mmHg when irrigating, creates clear view during the operation.

The LAP-Pump reacts to our RFID protected tube sets and ensures proper use. If used improperly, the pump automatically locks and irrigation is not possible.



**Lap-Pump**

Art.No. WOMO/PP120-M01 \*

**One device, two functions,  
many advantages**

- ▶ Simple set up and operation
- ▶ Easy to load tube set
- ▶ Vacuum suction included

| TECHNICAL DATA                 |                    |
|--------------------------------|--------------------|
| ART.No. WOMO/PP120-M01         | Lap-Pump           |
| Mains voltage range            | AC 100 - 240 V~    |
| Supply frequency range         | 50 / 60 Hz         |
| Protection class               | IP21               |
| Classification acc.            | Ila                |
| Max. sound level               | < 80 dB (a)        |
| Max. negative suction pressure | - 60 kPA           |
| Max. pump pressure             | 450 mmHg           |
| Max. irrigation performance    | 3 l/min            |
| Accuracy flow                  | ± 10 %             |
| Dimensions (W x H x D)         | 380 x 148 x 388 mm |
| Weight                         | 6.0 kg             |

\* Original Manufacturer Product of WOM

# Accessories

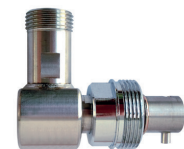
## Pumps

### ACCESSORIES –

For Multi-Indication Pump & Lap Pump



| ACCESSORIES * | FOR MULTI-INDICATION PUMP   |
|---------------|---|
| WOMO/2205334  | Transponder, Indication LAP   |
| WOMO/2205331  | Transponder, Indication ARTHRO  |
| WOMO/2205333  | Transponder, Indication HYS   |
| WOMO/2205336  | Transponder, Indication URO   |
| WOMO/T0505-01 | Tube set for Irrigation, single-use, 10 pcs./pack, all indications            |
| WOMO/T0506-01 | Tube set for Irrigation, reusable, 20 uses, 1 pc./pack, all indications       |
| WOMO/T0502-01 | Tube set for suction, single-use, 10 pcs./pack, all indications               |
| WOMO/T0503-01 | Tube set for suction, 2 connectors, single-use, 10 pcs./pack, all indications |
| WOMO/T0504-01 | Tube set for Vacuum, incl. Filter, 30-day use, 10 pcs./pack, all indications  |
| WOMO/Z0223-01 | Differential volume scale only for WOMO/PM304-M01                             |
| WOMO/Z0540-01 | Foot pedal  |
| WOMO/Z0554-01 | Bemis Container, 3 L, 2 pcs./pack, disposable                                 |
| WOMO/Z0555-01 | Bemis Container, 3 L, 36 pcs./pack, disposable                                |
| ACCESSORIES * | FOR MULTI-INDICATION PUMP & LAP-PUMP  |
| WOMO/Z0101-01 | Power supply cord EU  |
| WOMO/Z0176-00 | Power supply cord UK  |
| WOMO/Z0102-01 | Power supply cord US  |
| WOMO/Z0103-01 | Power supply cord CN  |
| WOMO/Z0560-01 | Power supply cord BR  |



\* Original Manufacturer Product of WOM

# Insufflator 50 L

Insufflator

**INSUFFLATOR 50L** – Higher performance enhances safety in the operating room



## Insufflator 50L

The Insufflator 50L adds even more safety during minimally invasive surgeries delivering the performance needed – even under extreme conditions such as obesity of the patient – to maintain a stable pneumoperitoneum. In pediatric or vessel-harvesting mode, the insufflator optimally adjusts according to the different anatomical requirements.

Another plus for all surgical procedures is its ease of use. The Insufflator has a color touchscreen for a high degree of user-friendliness.



### Insufflator 50L

Art.No. WOMO/FM134-M01 \*

| TECHNICAL DATA         |                                   |
|------------------------|-----------------------------------|
| Art.No. WOMO/FM134-M01 | Insufflator 50L                   |
| Insufflation medium    | Med. CO <sub>2</sub>              |
| Max. gas flow          | 50 l/min                          |
| Pressure range         | 1 - 30 mmHG                       |
| Power supply           | 100 - 240 V~                      |
| Frequency              | 50 - 60 Hz                        |
| Power consumption      | 150 VA                            |
| Current consumption    | 100 V: 1.5 A<br>240 V: 0.63 A     |
| Classification         | Protection Class I, Type BF, IP21 |
| Dimensions (W x H x D) | 406 x 150 x 195 mm                |
| Weight                 | 10 kg                             |

### Multi-mode powerhouse

- ▶ Three additional modes: Bariatric, Pediatric and Vessel Harvesting
- ▶ High-end performance
- ▶ Gas heating: reusable and disposable

\* Original Manufacturer Product of WOM

# Accessories

## Insufflator

### ACCESSORIES – For Insufflator 50L



| ACCESSORIES * | FOR INSUFFLATOR 50L                                       |
|---------------|---|
| WOMO/Z0452-01 | Tube set for insufflation, reusable, 20 uses, ISO         |
| WOMO/Z0280-01 | Heating tube set for insufflation, reusable, 100 uses     |
| WOMO/Z0293-01 | Tube set for insufflation, single-use (20 pieces)         |
| WOMO/Z0260-01 | Heating tube set for insufflation, single-use (10 pieces) |
| WOMO/Z0536-01 | Filter, single-use, sterile, ISO-ISO                      |
| WOMO/Z5044-01 | Hose for CO2 gas bottle DIN:US, 1.5m                      |
| WOMO/Z5045-01 | Hose for CO2 gas bottle ISO:US, 1.5m                      |
| WOMO/Z0499-01 | Hose for CO2 gas bottle Pin:US, 1.5m                      |
| WOMO/Z5073-01 | US adapter for universal gas connector                    |
| WOMO/Z5077-01 | Universal gas connector CO2 angled                        |
| WOMO/Z5031-01 | Hose for CO2 central gas supply DIN:NIST, 5m              |
| WOMO/Z5033-01 | Hose for CO2 central gas supply AGA:NIST, 5m              |
| WOMO/Z5037-01 | Hose for CO2 central gas supply NF:NIST, 5m               |
| WOMO/Z5039-01 | Hose for CO2 central gas supply UNI:NIST, 5m              |
| WOMO/Z5074-01 | NIST adapter for universal gas connection                 |
| WOMO/Z5075-01 | DISS adapter for universal gas connection                 |
| WOMO/Z5072-01 | Sinter filter for universal gas connector (5 pieces)      |



\* Original Manufacturer Product of WOM



# Digital Video Recorder

## MediCap USB 300 Digital Video Recorder – Medical Imaging made easy

Records high-definition video and still images from medical video sources to internal hard drive, external USB drive, or network drive

| TECHNICAL DATA       |   |
|----------------------|---|
| MECO/USB300UE        | MediCap USB300 Digital Video Recorder   |
| Device Type          | HD/3D2 Medical Video Recorder   |
| Case                 | Rugged metal case with high-impact plastic faceplate  |
| LCD Monitor          | 2 1/2", full color<br>(for video confirmation only, not for diagnosis)  |
| Buttons              | Sealed membrane, fluid resistant  |
| Video Inputs         | DVI (RGB via adapter), HD SDI, S-Video, Composite   |
| Video Output         | DVI (RGB, VGA via adapter)  |
| Video Formats        | H.264 / MPEG4 (1080, 720, NTSC, PAL)  |
| Video Quality        | Compact, Normal, Ultra (up to 40 Mbit/s)  |
| Image Formats        | JPG, TIFF, BMP, DICOM   |
| Networking           | RJ45 10/100/1000 Ethernet   |
| Internal Storage     | Internal hard drive, 1TB  |
| External Storage     | USB flash drive, USB hard drive, network drive  |
| USB Support          | USB2.0, high speed, 1 front connector, 2 rear connectors  |
| Printer Support      | Sony UP-DR80MD medical color printer  |
| Footswitch / Trigger | Standard 3.5mm mini jacks (one for photos, one for videos)  |
| Mechanical           | Size: 240 x 211 x 63mm / 9.5 x 8.3 x 2.5"<br>Weight: 1.8kg / 3lb 15oz   |
| Environmental        | Storage: -40° to +85° C; Operating: -20° to +40° C  |
| Power                | AC 100-240V 50/60Hz 25W; 3-prong AC jack  |
| Certifications       | CE 93/42/EEC, IEC 60601-1:2005, ANSI/AAMI ES60601-1:2005, CAN/CSA C22.2 No.60601, 1:2008, E361228, FCC Part 15, FDA Class 1, RoHS, PSE, GOST-R, CCC |
| Kit Contents         | MediCap USB300, USB flash drive, video and power cables, user guide   |



**MediCap USB300  
Digital Video Recorder**  
Art.No. MECO/USB300UE \*

### Medical Imaging made easy

- ▶ HD / 3D Medical Video Recorder
- ▶ Intuitive use
- ▶ Medical grade



**SlimCool Medical Grade  
Keyboard**  
Art.No. MECO/KB001WHUS \*

\* Original Manufacturer Product of MEDICAPTURE

# Equipment Cart

## **EQUIPMENT CART CLASSIC –**

The universal solution for all applications

### Equipment Cart Classic

Limitless options for expansion and upgrade.

Flexibility is facilitated by the high load capacity of 150 kg / 330 lbs, combined with standard supply in two widths and three heights.

Numerous accessory components, such as shelves with a distributed load rating of up to 50 kg / 110 lbs, offer solutions to meet all types of requirement.

Four large twin castors also provide a high level of mobility and easy maneuverability.

The support extrusions offer easy attachment for the jointed arm and optionally supplied power columns guarantee safe cabling, accommodation of all standard socket strips and large volumes of power lines and data cables.

| <b>TECHNICAL DATA</b>                                       |
|---|
| Art.No. ITDI/KU.1 Equipment Cart Classic                    |
| CONSISTING OF:  |
| Classic-cart basic frame Profi 40U, W500                    |
| Castor conversion kit Ø 125mm, conductive                   |
| Power columns 40U   |
| Shelf, W500   |
| Keyboard drawer with mousepad, D491, W500; color: waterblue |
| Shelf with handle, W500                                     |
| Isolating transformer 1600 VA for classic-cart              |
| Cross piece with monitor holder up to 14 kg, W500           |
| Socket strip earthed 8-way for trafo                        |



### **Equipment Cart Classic**

Art.No. ITDO/KU.1 \*

### **RM-Port Pivot Arm**

Art.No. ITDO/TH.2101.991 \*

\* Original Manufacturer Product of ITD

# Monitors

## ACL OR-MD FULL HD MEDICAL DISPLAYS –

Bright, true colors make this series first choice for endoscopy



### ACL OR-MD Medical Displays

ACL Medical Displays in a sealed aluminium housing with bright, true-color IPS displays and allround viewing angle are the first choice for medical image and video display in operating theatres and intensive care units. Configurable with a variety of analogue and digital interfaces, even including an integrated video crossbar.

Endoscopy, microscopy and radiology are important applications for ACL Medical Displays. But with their optional touch functionality, these monitors are also ideal for use as a second screen for various medical devices.

| TECHNICAL DATA     |  |
|--------------------|--|
| Laquering          | Light grey RAL 7035; optional: germ-reduction nano-lacquering, other color tones in conformity with RAL                              |
| Protective pane    | integrated: optional with touchscreen  |
| Mounting           | Built-in VESA-100 interfaces; optional: extensive mounting solutions available as accessories  |
| Weight             | 10.5 kg (without accessories)  |
| Power supply unit  | 100 - 240 V / 50 / 60 Hz / internal 80 W   |
| USV                | none; optional: external (as much as 10 minutes of power failure bridging)   |
| Front keypad       | On/Off-button, six buttons for OSD   |
| Display            | Internal TFT display, 16.7 million colors, Solution 1920x1080 pixels, Contrast 1000:1, Brightness 350 cd/m², Viewing Angle 178°/178° |
| Digital            | DVI-I (optional: VGA D-SUB-15)   |
| S-video            | 4-polig mini DIN   |
| Composite video    | RCA (PAL/NTSC)   |
| Programming        | RS232  |
| Language selection | german; optional: english, french, italian, hispanic, polish   |



**ACL OR-MD 24"**  
Art.No. ACLO/OR-MD24 \*



**ACL OR-MD 27"**  
Art.No. ACLO/OR-MD27 \*



**ACL OR-MD 32"**  
Art.No. ACLO/OR-MD32 \*

\* Original Manufacturer Product of ACL



· WORLD WIDE DISTRIBUTION NETWORK ·



**TONTARRA Medizintechnik GmbH**

Daimlerstr. 15 · 78573 Wurmlingen/Germany

Tel: +49(0) 74 61/9 65 76 -0

Fax: +49(0) 74 61/9 65 76 -26

info@tontarra.de

[www.tontarra.de](http://www.tontarra.de)

All rights are reserved. Technical alterations are possible. This folder may be used for no other purpose than offering, buying and selling of our products. No part may be copied or reproduced in any form. In the case of misuse, we retain the rights to recall our catalogs and pricelists and to take legal actions.

999-305-01E · 04.2020