



Product catalog 2023

Contact us

Bukultu 7b
LV-1005 Riga,
Latvia
+371 6755 8743
info@elmi-tech.com

For more details please go to www.elmi-tech.com



Newest centrifuges

CM-7S & CM-8S



CM-7S
3500 RPM



CM-8S
4500 RPM



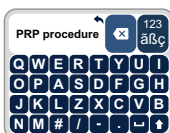
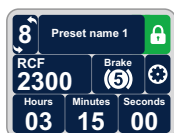
Designed for safety. This centrifuge features our completely new stainless steel inner bowl, stainless steel motor cover and new and more efficient passive cooling system. CM-7S is cold room and refrigerator safe, and comes equipped with a transparent lid and automatic lid lock for extra convenience and safety.

Compact and Versatile, with its exceptionally slim design, is one of the most compact and versatile swing-out centrifuges on the market.

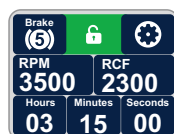
SkySpin patented motor controller:
Digital speed and balance controller, smooth, noiseless and non-heating operation.

Simultaneous display of RPM and G-Force on LCD Display

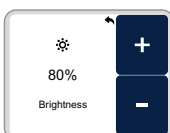
Stainless Steel Inner bowl and motor cover Six different brake speeds.



Create custom presets quick and easy, give preset custom names etc.



Colorful LCD touchscreen display allows navigating and setting parameters effortlessly.



Interface can be precisely adjusted to match your working environment and preferences.



Accessories for CM-7S и CM-8S



ELMI Rotor 8M.01

All stainless steel rotor for 4 test tubes of up to 50 ml



ELMI Rotor 8M.06

All stainless steel rotor for 6 test tubes of up to 50 ml



ELMI Rotor 8M.02

All stainless steel rotor for 24 test tubes 12 of up to 12 ml and 12 of up to 15 ml



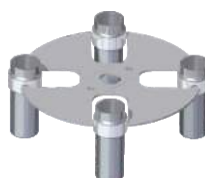
ELMI Rotor 8M.08

All stainless steel rotor for 6 test tubes of up to 50 ml



ELMI Rotor 8M.03

All stainless steel rotor for 4 test tubes adapters



ELMI Rotor 8M.07

All stainless steel rotor for 4 test tubes of up to 50 ml



ELMI Rotor 8M.05

All stainless steel rotor for 12 test tubes of up to 15 ml



ELMI Rotor 8M.09

All stainless steel rotor for 6 test tubes of up to 15 ml and 2 test tubes of up to 50 ml



ELMI Rotor 8M

All stainless steel rotor for 12 test tubes of up to 12 ml



ELMI Rotor 8M.10

All stainless steel rotor for 6 test tubes. 4 of up to 15 ml and 2 of up to 50 ml



Desktop centrifuge

CM-7S Plus



Start/Stop and Open functions have dedicated physical buttons for increased daily comfort.

3500 RPM 2300 RCF powerfull drive and 6 brake levels to adjust centrifuge for your needs.

All operation parameters and settings are displayed realtime on colorful LCD display.

Lid is made of rigid transparent plastic that insures both highest safety and comfort.

CM-7S Plus. Redesigned stainless-steel inner bowl and motor cover provide new level of safety, reliability and ease of use. CM-7S Plus is your ideal unit for PRP, PRF, Clinical, Medical, Research or any other application.

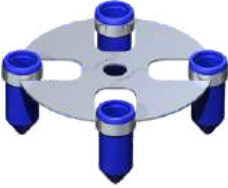
- Compact and Versatile CM-7S Plus, with its exceptionally slim design, is one of the most compact and versatile swing-out centrifuges on the market.
- Designed for safety. This centrifuge features our completely new stainless steel inner bowl, stainless steel motor cover and new and mover efficient passive cooling system. CM-7S Plus is cold room and refrigerator safe, and comes equipped with a transparent lid and automatic lid lock for extra convenience and safety.
- Designed from ground up with Medical and PRP applications in mind, our new unit includes variable brake speed, 2300 RCF (3500 RPM), hour counter, rotor imbalance and much more.
- CM-7S Plus has a huge selection of rotors and adapters to fit almost any size tube.
- Compliance with IEC 61010-1 requirements, CE marking, FDA approval and ISO 13485 certification.



Accessories for CM-7S Plus

**ELMI Rotor 6M**

All stainless steel rotor for 12 test tubes of up to 12 ml

**ELMI Rotor 6M.01**

Rotor for 4 test tubes of up to 50 ml

**ELMI Rotor 6M.02**

All stainless steel rotor for 24 test tubes
12 of up to 12 ml and 12 of up to 15 ml

**ELMI Rotor 6M.03**

All stainless steel rotor for 24 standard gel cards

**ELMI Rotor 6M.05**

All stainless steel rotor for 12 test tubes of up to 15 ml

**ELMI Rotor 6M.06**

Rotor for 6 test tubes of up to 50 ml



ELMI spacer for microtainer tubes 5-10 ml



Intelli-Mixer RM-2S, RM-2M & RM-2L

It's a class by itself

Powered by V-Spin the world's most advanced, patented mixing and liquid-handling technology the Intelli-Mixer RM-2 is truly the latest in cutting-edge science. V-spin harnesses the energy of an unequalled stepper motor, allowing for a wide variety of mixing, vibrating, and rotating cycles. This multipurpose unit is a rotator, vortex mixer, and blotter all in one. Designed to be cold room safe, and with an unprecedented 34 modes of operation, this versatile piece is unrivaled in today's market.



The Intelli-Mixers are designed to perform mixing of various laboratory liquid samples in a wide range of test tubes from 0.5 ml up to 50 ml volume. The Intelli-Mixers are designed to perform mixing of various laboratory liquid samples in a wide range of test tubes from 0.5 ml up to 50 ml volume. Powered by V-Spin the world's most advanced, patented mixing and liquid-handling technology the Intelli-Mixer™ RM-2 is truly the latest in cutting-edge science. V-spin harnesses the energy of an unequalled stepper motor, allowing for a wide variety of mixing, vibrating, and rotating cycles. This multipurpose unit is a rotator, vortex mixer, and blotter all in one. Designed to be cold room safe, and with an unprecedented 34 modes of operation, this versatile piece is unrivaled in today's market.



Intelli-Mixer RM-2S, RM-2M & RM-2L

Accessories



ELMI 11mm test tube
rack for RM-2M



ELMI 13mm test tube
rack for RM-2M



ELMI 16mm test tube
rack for RM-2M



ELMI 30mm test tube
rack for RM-2M



ELMI 8mm test tube
rack for RM-2M



ELMI Blotting rack for
RM-2M



ELMI Mix rack for RM-
2M



ELMI Rocking platform
for RM-2M

Technical Data

Rotation Speed	1 - 99 RPM
Rotation Speed Settings Step	1 RPM
Overall Number of Programs	28 Standard + 3 Custom
Environmental Temperature	10 - 45 °C
Relative Air Humidity (at 20°C)	up to 80%
Power Supply Adapter	DC 12V, 1.5 A



Shakers

Orbital, Rocking & Thermostatic



Smart driver allows to run multiple mixing modes on the same machine seamlessly organized in a custom program.



Orbital
Rotation



Rocking
Platform



Reciprocal
Wave



Autoreverse
Rotation



Vibration



Incubation

The Sky Line series is a high-performance line of orbital and rocking shakers, capable of non-stop operation in a wide variety of medical, chemical, and biological laboratories. Designed for flexibility, these units come with a great selection of optional accessories and attachments, and in an assortment of sizes and loading capacities to satisfy your specific lab needs. With an excellent record of reliability and long life, the Sky Line series will be a superior partner in your laboratory.

Features:

- Optimal amplitude of platform rotation for intensive mixing
- Advanced stepper motor control system
- Digital timer
- High-precision, rotational speed controls
- Sound notification when mixing complete
- Onboard memory for storing settings



Digital rocking shaker DRS-4



- 12 levels of rocking for intensive mixing
- Advanced high precision speed control system
- Digital timer
- Sound notification when mixing completes
- Onboard memory for storing settings
- Anti-vibration system
- Programmable custom cycles

Accessories for orbital and rocking shakers



Attachable multi-level platform for DRS-12
Several levels can be added to the rocker for maximum capacity.



Microplate Adapter
Ensures utmost efficiency by securing varieties of microplates at once. Depending on the unit's platform size, this adapter can accommodate 4 or 8 microplates.



Universal roller clips
Very effective solution for securing various unstable lab flasks, such as those with flat bottoms and extra height.



Universal magnetic clips
Fast and easy way to fixate flat-bottom lab flasks and bottles w can be used in combination with roller clips.



Thermostatic shakers

DTS-2 & DTS-4

Incredibly accurate and reliable thermostats, accommodating 2 or 4 microplates. Its hermetic aluminum container and digital platform sensors, combined with a bi-directional heating system housed within the lid and platform, ensure an amazingly smooth temperature gradient and precise heating of all samples.



Technical Data

Microplate Capacity	4
Supported Microplate Dimensions	86 x 128 x 20 mm
Temperature Range	Ambient +3 up to 60 °C
Temperature Control Accuracy	0.1 °C
Platform Rotation Type	Orbital
Platform Rotation Orbit	2 mm
Platform Rotation Speed	100 - 1300 RPM
Timer	1 - 999 min
Ambient Temperature Range	from +10 to +45
Relative Atmospheric Moisture at 20°C	max 80 %
Power Supply	100-240 V; 50/60 Hz
Power Consumption	140 W
External Dimensions (L x W x H)	370 x 335 x 120
Weight	9.1 kg



Water bath

TW-2.02 & TW-2.03

The stainless steel TW-2.02 and the plastic TW-2.03 are both convenient and reliable 8.5 liter baths that consistently deliver outstanding results in the lab.



FEATURES

- Precise and user-friendly temperature control in the bath
- Automatic water level detection system
- Variable water circulation speed
- External water circulation pump to accurately heat outer items
- Thorough water mixing to maintain consistent temperature
- Slim, simplified design for quick and easy disassembling and cleaning



Fugamix CM-50M & CM-70M

The Fugamix™ family of products is a unique series, engineered to combine the two most frequently used functions in the laboratory – mixing and spin down – in a single machine. This exciting, one-of-a-kind system will swiftly and efficiently handle both operations either manually or automatically. Plus, Fugamix™ is powered by V-Spin™ – the world's most advanced, patented mixing and liquid-handling technology. The result is huge savings in time, effort, and workspace.



Patent pending
motor drive



Lid lock



Digital imbalance
Sensor



Low noise



Digital rotor
Recognition

- Simple, yet exceptionally powerful and versatile centrifuge
- Intense vortex for up to 12 x 0.2-2ml tubes with 12 levels of shaking
- Specially-developed shaking mode to imitate hand shaking
- 4 Rotor options with rotor recognition
- Intuitive and clear interface with large color display
- Display preferences include the following:
 - Language
 - Brightness
 - Sleep mode
 - Sound volume
- Sample prep Spin-Mix-Spin mode
- Short Spin button
- 15300 RCF
- Quiet operation
- Imbalance control system with great tolerance
- Strong high tech motor
- Patented motor control driver
- Innovative automatic rotor recognition
- Ultra-smooth vibration-free run, due to unique drive chassis
- Custom Spin-Mix-Spin mode for an array of applications
- Large buttons for separate vortexing or centrifugation



Accessories for CM-50M & CM-70M



Specifically designed Spin-Mix™ rotor that enables mixing and spinning down tubes simultaneously with the same rotor.



Universal high speed rotor with patent pending cover cap. Insures optimum air flow and incredibly low sample heating.



Our patented Carbon-Spin™ rotor is composed of our proprietary aluminum alloy and a carbon-fibre stability ring. Its robust design allows the user to spin and vigorously shake any substance for as long as the experiment requires.



Universal PCR strip rotor for standard PCR strips.



Mix rotor for test tubes of 0.2 - 2 ml volume



Universal PCR strip rotor for standard PCR strips 0.2 ml volume.



Rotor adapter for 0.2 & 0.5mL test tubes.



Mixers

V-3 & MS-01

VORTEX V-3 is a durable, easily operated, trustworthy addition to every laboratory, and accommodates any test tube up to 50 ml volume.



Technical Data

Rotor Rotation Speed	50 - 4000 RPM
Vortex Rotor Vibration Amplitude	4 mm
Dimensions (D x H)	130 x 58 mm
Power Supply Adapter	12 VDC, 1.5 A or 24 VDC, 1 A
Weight	0.7 kg



Strong This motor-driven unit provides an extra strong field for up to 4 flat-bottom lab flasks at one time.

Versatile Specially designed to be compatible with the TW-2.03 water thermostat, the combo offers highly accurate temperature control and effective mixing simultaneously.

Durable The magnetic stirrer's stainless steel enclosure is highly resistible, as well as easily cleaned and sterilized.

Convenient Its simple and noiseless operation make the MS-01 an obvious choice for any laboratory.



Centrifuge CM-50

CM-50 is one of the most compact and powerful micro-centrifuges available today. Its patented air cooling system and magnetic rotor cap guarantee exceptionally low sample heating, far surpassing the industry's most stringent standards.

This mighty mini-centrifuge spins down samples at 15,000 RPM, yet runs on only 24 volts, and fits easily into the smallest spaces. Its high-performance motor with maintenance-free drive ensures outstanding durability and long life in your lab.



Universal high speed rotor with patent pending cover cap. Insures optimum air flow and incredibly low sample heating.



Universal PCR strip rotor for standard PCR strips.



Rotor adapter for 0.2 & 0.5mL test tubes.

Technical Data

Centrifugation Speed	1,000-15,000 RPM
Maximum Centrifugal Force	15,295 RCF
Timer	from 0.1 up to 99 min
Dimensions (L x W x H)	200 x 180 x 145 mm
Power Supply Adapter	24 VDC, 5A
Weight	3.1 kg

