

exeol wipes optimal

Disinfectant detergent wipes for surfaces and medical devices, alcohol-free

Pre-impregnated wipes:

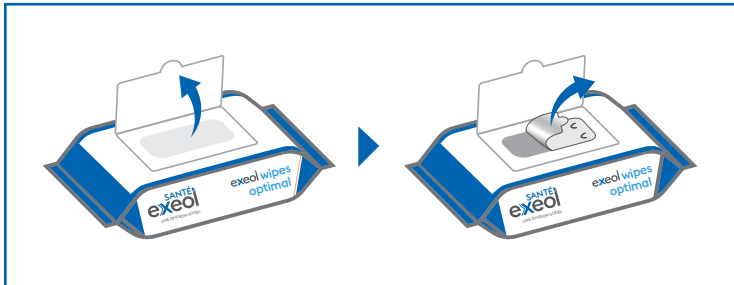
- ▶ **Medical device application:** for cleaning and disinfection by wet wiping of the surfaces of invasive and non-invasive reusable medical devices.
- ▶ **Biocidal product application:** for cleaning and disinfection by wet wiping of surfaces, furniture and heavy equipment.



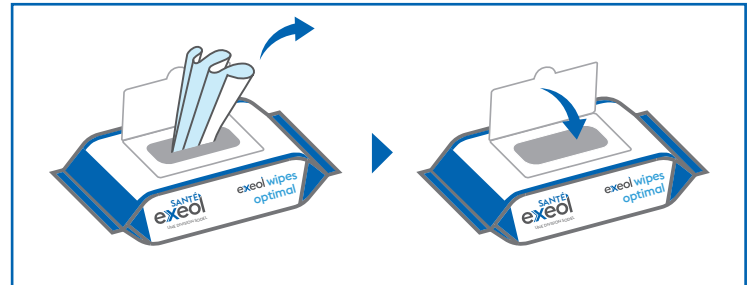
SURFACES

Before use, check the expiry date on the label.
exeol wipes optimal is ready-to-use.

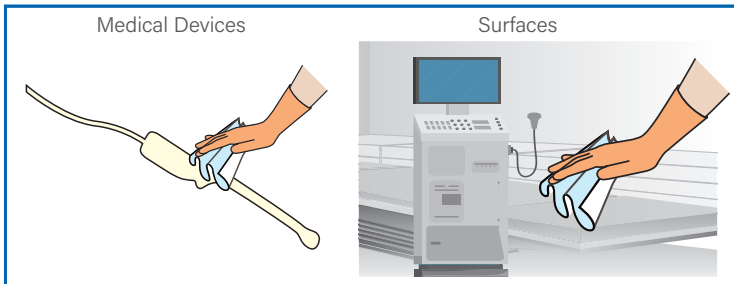
Wipes



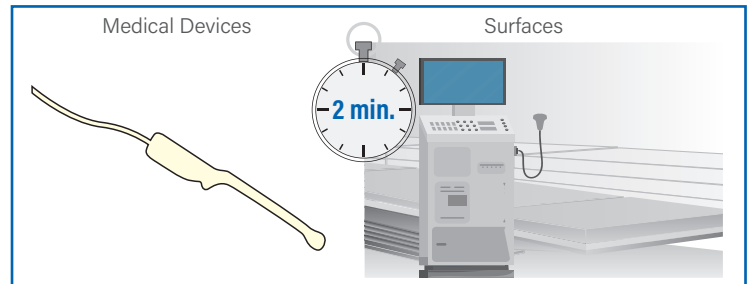
When using for the first time, open the bag and remove the protective seal.



1 Take a wipe.
Close the bag after use.



2 Thoroughly wipe the surface to be treated. Use the number of wipes needed (2 wipes/m²).



3 Contact time: from 2 min. depending on the required activity spectrum.



4 Do not rinse (except surfaces in direct contact with mucous membranes or foodstuffs, or if a further disinfection step is required).

Repeat the disinfection operation whenever necessary.
Shelf life after opening: 3 months.

Use biocides safely. Always read the label and product information before use.

PROFESSIONAL USE ONLY

MADE IN FRANCE



Product file available on
www.exeol.fr

Sodel
190 rue René Barthélemy
14100 Lisieux, France.
TEL: +33 (0)2 31 31 10 50
www.exeol.fr

CE marking received in 2023
MD class IIa





exeol wipes optimal

Disinfectant detergent wipes for surfaces and medical devices, alcohol-free

Pre-impregnated wipes:

- ▶ **Medical device application:** for cleaning and disinfection by wet wiping of the surfaces of invasive and non-invasive reusable medical devices.
- ▶ **Biocidal product application:** for cleaning and disinfection by wet wiping of surfaces, furniture and heavy equipment.

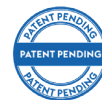
• **Original synergistic combination of two antimicrobial active ingredients (SCALE effect).**

• **Active from 2 min. (bactericidal, yeasticidal and virucidal against enveloped viruses).**

• **Cleanability effect enhanced by a surfactant selected to confer a low surface tension (ST < 27 mN/m).**

• **Broad compatibility with materials.**

• **Suitable for surfaces in contact with foodstuffs.**



SURFACES

Direction for use

exeol wipes optimal is ready-to-use.

When using for the first time, open the bag and remove the protective seal.

1. Take a wipe. Close the bag after use.
2. Thoroughly wipe the surface to be treated. Use the number of wipes needed (2 wipes/m²).
3. Contact time: from 2 min. depending on the required activity spectrum.
4. Do not rinse (except surfaces in direct contact with mucous membranes or foodstuffs, or if a further disinfection step is required).

- Repeat the disinfection operation whenever necessary.

PRODUCT

ALCOHOL
FREE

SCALE
effect

2 MIN.

GOOD PRACTICES



Commercial presentations

- Box 12 x 100 wipes (180 x 200mm): EXS0041
- Also exists in 750mL format: **exeol surf optimal** (EXS0038)



Product file available on
www.exeol.fr

MD class IIa
CE marking obtained in 2023



SANTÉ
exeol
A SODEL DIVISION

exeol wipes optimal

Disinfectant detergent wipes for surfaces and medical devices,
alcohol-free

Microbiological properties of the liquid extracted from the wipes

Dirty conditions, ready-to-use, 20°C:

	TESTS ²	STRAINS	CONTACT TIME
Bactericidal	EN 1276	<i>Pseudomonas aeruginosa</i> , <i>Staphylococcus aureus</i> , <i>Enterococcus hirae</i> , <i>Escherichia coli</i>	2 min.
	EN 13727 EN 16615	<i>Pseudomonas aeruginosa</i> , <i>Staphylococcus aureus</i> , <i>Enterococcus hirae</i>	
Yeasticidal	EN 1650 EN 13624 EN 16615	<i>Candida albicans</i>	2 min.
Active on <i>Candida auris</i>	EN 13624 EN 16615	<i>Candida auris</i>	2 min.
Virucidal against enveloped viruses ¹	EN 14476 EN 16777	Vaccinia virus ¹ <i>Elstree</i> strain	2 min.
Active on Norovirus and Rotavirus	EN 14476 EN 16777	Murine Norovirus strain S-99, Rotavirus strain SA-11	15 min.
Active on Adenovirus	EN 14476	Adenovirus type 5	45 min.

¹ Vaccinia virus is the representative virus of the enveloped viruses presented in Annex A of standards EN 14476+A2 and EN 16777 and in Annex B of standard EN 17111, such as for example: Hepatitis B virus (HBV); Hepatitis C virus (HCV); Human Immunodeficiency Virus (HIV); Herpesviridae (Herpes virus); Coronavirus; Influenza, rabies, rubella, measles viruses; ...

² All microbiology standards have been performed on liquid extracted from the wipes, except for standard EN 16615 performed with the wipe, and standards EN 14476 and EN 16777 on Rotavirus, performed on the impregnating solution of the wipes.

Composition	Characteristics	Cautionary notes
Wipes pre-impregnated with a PT2/PT4 biocidal liquid solution. Biocidal active substances (% w/w): Alkyl (C12-16) dimethylbenzyl ammonium chloride (CAS: 68424-85-1) 0.08%; Didecyldimethylammonium chloride (CAS: 7173-51-5) 0.16%.	Wipe impregnation solution: <ul style="list-style-type: none">pH: 6.5 - 7.5Fragrance: UnscentedColour: Colourless	Use biocides safely. Always read the label and product information before use. UFI: 4C69-M0Y3-T007-XRAW

PROFESSIONAL USE ONLY

MADE IN FRANCE

 Sodel
190 rue René Barthélemy
14100 Lisieux, France.
TEL: +33 (0)2 31 31 10 50
www.exeol.fr


A SODEL DIVISION

SECTION 1: Identification of the substance/mixture and of the company/undertaking

1.1. Product identifier

Product form	: Mixture
Trade name	: exeol wipes optimal
UFI	: 4C69-M0Y3-T007-XRAW
Product code	: 3324-112-3
Type of product	: Detergent, Medical devices for cleaning or disinfection, Biocidal product (Regulation (EU) No 528/2012 concerning the making available on the market and use of biocidal products)
Product group	: Trade product

1.2. Relevant identified uses of the substance or mixture and uses advised against

1.2.1. Relevant identified uses

Main use category	: Professional use
Use of the substance/mixture	: Disinfectant detergent wipes for surfaces and medical devices, alcohol-free Pre-impregnated wipes Medical device application: for cleaning and disinfection by wet wiping of surfaces of invasive and non-invasive reusable medical devices Biocidal product application: for cleaning and disinfection by wet wiping of surfaces, furniture and heavy equipment PT 2 - Disinfectants and algaecides not intended for direct application to humans or animals PT 4 - Food and feed area

1.2.2. Uses advised against

No additional information available

1.3. Details of the supplier of the safety data sheet

Manufacturer

SODEL
190 rue René Barthélemy
FR 14100 LISIEUX
FRANCE
T +33(0)2 31 31 10 50, F +33(0)2 31 31 80 60
info@sodel-sa.eu, www.sodel-sa.eu

1.4. Emergency telephone number

Country/Area	Organisation/Company	Address	Emergency number	Comment
Ireland	National Poisons Information Centre Beaumont Hospital	PO Box 1297 Beaumont Road 9 Dublin	+353 1 809 2566 (Healthcare professionals- 24/7) +353 1 809 2166 (public, 8am - 10pm, 7/7)	
United Kingdom	Guy's & St Thomas' Poisons Unit Medical Toxicology Unit, Guy's & St Thomas' Hospital Trust	Avonley Road SE14 5ER	+44 20 7188 7188	
United Kingdom	National Poisons Information Service (Newcastle Centre) Regional Drugs and Therapeutics Centre	16/17 Framlington Place Newcastle-upon-Tyne NE2 4AB Newcastle	0344 892 0111	Only for healthcare professionals

SECTION 2: Hazards identification

2.1. Classification of the substance or mixture

Classification according to Regulation (EC) No. 1272/2008 [CLP]

Not classified

exeol wipes optimal

Safety Data Sheet

according to the REACH Regulation (EC) 1907/2006 amended by Regulation (EU) 2020/878

Adverse physicochemical, human health and environmental effects

To our knowledge, this product does not present any particular risk, provided it is handled in accordance with good occupational hygiene and safety practice.

2.2. Label elements

Labelling according to Regulation (EC) No. 1272/2008 [CLP]

No labelling applicable

2.3. Other hazards

Contains no PBT and/or vPvB substances $\geq 0.1\%$ assessed in accordance with REACH Annex XIII

The mixture does not contain substance(s) included in the list established in accordance with Article 59(1) of REACH for having endocrine disrupting properties, or substance(s) are not identified as having endocrine disrupting properties in accordance with the criteria set out in Commission Delegated Regulation (EU) 2017/2100 or Commission Regulation (EU) 2018/605 at a concentration equal to or greater than 0,1 %

SECTION 3: Composition/information on ingredients

3.1. Substances

Not applicable

3.2. Mixtures

This mixture does not contain any substances to be mentioned according to the criteria of section 3.2 of REACH Annex II

SECTION 4: First aid measures

4.1. Description of first aid measures

First-aid measures general	: As a general rule, in case of doubt or if symptoms persist, always call a doctor. Never give anything by mouth to an unconscious person.
First-aid measures after inhalation	: Remove person to fresh air and keep comfortable for breathing.
First-aid measures after skin contact	: Wash skin with plenty of water.
First-aid measures after eye contact	: Rinse eyes with water as a precaution.
First-aid measures after ingestion	: Call a poison center or a doctor if you feel unwell. Rinse mouth. Do not induce vomiting.

4.2. Most important symptoms and effects, both acute and delayed

No additional information available

4.3. Indication of any immediate medical attention and special treatment needed

Treat symptomatically.

SECTION 5: Firefighting measures

5.1. Extinguishing media

Suitable extinguishing media : Water spray. Dry powder. Foam. Carbon dioxide.

5.2. Special hazards arising from the substance or mixture

Fire hazard	: Not flammable.
Hazardous decomposition products in case of fire	: Toxic fumes may be released. Do not breathe in smoke.

5.3. Advice for firefighters

Protection during firefighting : Do not attempt to take action without suitable protective equipment. Self-contained breathing apparatus. Complete protective clothing.

exeol wipes optimal

Safety Data Sheet

according to the REACH Regulation (EC) 1907/2006 amended by Regulation (EU) 2020/878

SECTION 6: Accidental release measures

6.1. Personal precautions, protective equipment and emergency procedures

6.1.1. For non-emergency personnel

Emergency procedures : Ventilate spillage area.

6.1.2. For emergency responders

Protective equipment : Do not attempt to take action without suitable protective equipment. For further information refer to section 8: "Exposure controls/personal protection".

6.2. Environmental precautions

Avoid release to the environment. Prevent entry into storm water systems or watercourses.

6.3. Methods and material for containment and cleaning up

For containment : Cover spill with non combustible material, e.g.: sand, earth, vermiculite.
Methods for cleaning up : Take up liquid spill into absorbent material.
Other information : Dispose of materials or solid residues at an authorized site.

6.4. Reference to other sections

For further information refer to section 13.

SECTION 7: Handling and storage

7.1. Precautions for safe handling

Precautions for safe handling : Ensure good ventilation of the work station. Wear personal protective equipment.
Hygiene measures : Do not eat, drink or smoke when using this product. Always wash hands after handling the product.

7.2. Conditions for safe storage, including any incompatibilities

Storage conditions : Store in original container. Store in a well-ventilated place. Keep cool.
Storage temperature : 5 – 25 °C
Storage area : Store away from heat.

7.3. Specific end use(s)

No additional information available

SECTION 8: Exposure controls/personal protection

8.1. Control parameters

8.1.1 National occupational exposure and biological limit values

sodium hydroxide (1310-73-2)	
Ireland - Occupational Exposure Limits	
Local name	Sodium hydroxide
OEL STEL	2 mg/m ³
Regulatory reference	Chemical Agents Code of Practice 2021
United Kingdom - Occupational Exposure Limits	
Local name	Sodium hydroxide
WEL STEL (OEL STEL)	2 mg/m ³
Regulatory reference	EH40/2005 (Fourth edition, 2020). HSE

exeol wipes optimal

Safety Data Sheet

according to the REACH Regulation (EC) 1907/2006 amended by Regulation (EU) 2020/878

8.1.2. Recommended monitoring procedures

No additional information available

8.1.3. Air contaminants formed

No additional information available

8.1.4. DNEL and PNEC

No additional information available

8.1.5. Control banding

No additional information available

8.2. Exposure controls

8.2.1. Appropriate engineering controls

Appropriate engineering controls:

Ensure good ventilation of the work station. Emergency eye wash fountains and safety showers should be available in the immediate vicinity of any potential exposure.

8.2.2. Personal protection equipment

8.2.2.1. Eye and face protection

Eye protection:

Avoid contact with eyes. Prescription glasses are not considered as protection. Emergency eye wash fountains should be available in the immediate vicinity of any potential exposure. The wearing of protective glasses is not compulsory. If your protocols recommend wearing them, use eye protection designed against liquid splashes in accordance with standard EN166.

8.2.2.2. Skin protection

Hand protection:

The wearing of protective gloves is not compulsory. If your protocols recommend wearing them, use suitable protective gloves resistant to chemical agents in accordance with standard EN374. Chemical resistant gloves (according to European standard ISO 374-1 or equivalent). Gloves must be selected according to the application and duration of use at the workstation

Other skin protection

Materials for protective clothing:

Avoid contact with skin. Grossly contaminated clothing should be removed and the skin washed with soap and water or a proprietary skin cleaner. Work clothing worn by personnel shall be laundered regularly. Protective clothing is not mandatory, but if your protocol requires it, use suitable chemical protective clothing

8.2.2.3. Respiratory protection

Respiratory protection:

Wearing a mask or respirator is not obligatory. If your protocols recommend wearing one, wear appropriate respirator

8.2.2.4. Thermal hazards

No additional information available

8.2.3. Environmental exposure controls

Environmental exposure controls:

Avoid release to the environment.

SECTION 9: Physical and chemical properties

9.1. Information on basic physical and chemical properties

Physical state	: Liquid
Colour	: Colourless.
Appearance	: Clear.
Odour	: Fragrance-free.
Odour threshold	: Not available
Melting point	: Not applicable
Freezing point	: Not available
Boiling point	: Not available

exeol wipes optimal

Safety Data Sheet

according to the REACH Regulation (EC) 1907/2006 amended by Regulation (EU) 2020/878

Flammability	: Not applicable
Lower explosion limit	: Not available
Upper explosion limit	: Not available
Flash point	: > 110 °C
Auto-ignition temperature	: > 601 °C
Decomposition temperature	: Not available
pH	: 6.5 – 7.5
Viscosity, kinematic	: Not available
Solubility	: Not available
Partition coefficient n-octanol/water (Log Kow)	: Not available
Vapour pressure	: Not available
Vapour pressure at 50°C	: Not available
Density	: 0.995 – 1.005 g/ml
Relative density	: Not available
Relative vapour density at 20°C	: Not available
Particle characteristics	: Not applicable

9.2. Other information

9.2.1. Information with regard to physical hazard classes

No additional information available

9.2.2. Other safety characteristics

VOC content	: 0 % (EU Directive 2010/75)
Refractive index	: 1.334 – 1.335

SECTION 10: Stability and reactivity

10.1. Reactivity

The product is non-reactive under normal conditions of use, storage and transport.

10.2. Chemical stability

Stable under normal conditions.

10.3. Possibility of hazardous reactions

No dangerous reactions known under normal conditions of use.

10.4. Conditions to avoid

None under recommended storage and handling conditions (see section 7).

10.5. Incompatible materials

No additional information available

10.6. Hazardous decomposition products

Under normal conditions of storage and use, hazardous decomposition products should not be produced.

SECTION 11: Toxicological information

11.1. Information on hazard classes as defined in Regulation (EC) No 1272/2008

Acute toxicity (oral)	: Not classified
Acute toxicity (dermal)	: Not classified
Acute toxicity (inhalation)	: Not classified
Skin corrosion/irritation	: Not classified pH: 6.5 – 7.5
Serious eye damage/irritation	: Not classified pH: 6.5 – 7.5
Respiratory or skin sensitisation	: Not classified

exeol wipes optimal

Safety Data Sheet

according to the REACH Regulation (EC) 1907/2006 amended by Regulation (EU) 2020/878

Germ cell mutagenicity	: Not classified
Carcinogenicity	: Not classified
Reproductive toxicity	: Not classified
STOT-single exposure	: Not classified
STOT-repeated exposure	: Not classified
Aspiration hazard	: Not classified

11.2. Information on other hazards

No additional information available

SECTION 12: Ecological information

12.1. Toxicity

Ecology - general	: The product is not considered harmful to aquatic organisms nor to cause long-term adverse effects in the environment.
Hazardous to the aquatic environment, short-term (acute)	: Not classified
Hazardous to the aquatic environment, long-term (chronic)	: Not classified

12.2. Persistence and degradability

exeol wipes optimal	
Persistence and degradability	The surfactant(s) contained in this preparation complies(comply) with the biodegradability criteria as laid down in Regulation (EC) No. 648/2004 on detergents. Data to support this assertion are held at the disposal of the competent authorities of the Member States and will be made available to them, at their direct request or at the request of a detergent manufacturer.

12.3. Bioaccumulative potential

No additional information available

12.4. Mobility in soil

No additional information available

12.5. Results of PBT and vPvB assessment

No additional information available

12.6. Endocrine disrupting properties

No additional information available

12.7. Other adverse effects

No additional information available

SECTION 13: Disposal considerations

13.1. Waste treatment methods

Waste treatment methods	: Dispose of contents/container in accordance with licensed collector's sorting instructions.
Sewage disposal recommendations	: Disposal must be done according to official regulations.
Product/Packaging disposal recommendations	: Empty container completely. Keep label(s) on container. Prevent entry into storm water systems or watercourses. Avoid release to the environment. Disposal must be done according to official regulations. Waste management is carried out without endangering human health, without harming the environment and, in particular without risk to water, air, soil, plants or animals. Do not flush down the toilet.

exeol wipes optimal

Safety Data Sheet

according to the REACH Regulation (EC) 1907/2006 amended by Regulation (EU) 2020/878

SECTION 14: Transport information

In accordance with ADR / IMDG / IATA / ADN / RID

ADR	IMDG	IATA	ADN	RID
14.1. UN number or ID number				
Not applicable	Not applicable	Not applicable	Not applicable	Not applicable
14.2. UN proper shipping name				
Not applicable	Not applicable	Not applicable	Not applicable	Not applicable
14.3. Transport hazard class(es)				
Not applicable	Not applicable	Not applicable	Not applicable	Not applicable
14.4. Packing group				
Not applicable	Not applicable	Not applicable	Not applicable	Not applicable
14.5. Environmental hazards				
Not applicable	Not applicable	Not applicable	Not applicable	Not applicable
No supplementary information available				

14.6. Special precautions for user

Overland transport

Not applicable

Transport by sea

Not applicable

Air transport

Not applicable

Inland waterway transport

Not applicable

Rail transport

Not applicable

14.7. Maritime transport in bulk according to IMO instruments

Not applicable

SECTION 15: Regulatory information

15.1. Safety, health and environmental regulations/legislation specific for the substance or mixture

15.1.1. EU-Regulations

REACH Annex XVII (Restriction List)

Contains no substance(s) listed on REACH Annex XVII (Restriction Conditions)

REACH Annex XIV (Authorisation List)

Contains no substance(s) listed on REACH Annex XIV (Authorisation List)

REACH Candidate List (SVHC)

Contains no substance(s) listed on the REACH Candidate List

PIC Regulation (Prior Informed Consent)

Contains no substance(s) listed on the PIC list (Regulation EU 649/2012 concerning the export and import of hazardous chemicals)

exeol wipes optimal

Safety Data Sheet

according to the REACH Regulation (EC) 1907/2006 amended by Regulation (EU) 2020/878

POP Regulation (Persistent Organic Pollutants)

Contains no substance(s) listed on the POP list (Regulation EU 2019/1021 on persistent organic pollutants)

Ozone Regulation (1005/2009)

Contains no substance(s) listed on the Ozone Depletion list (Regulation EU 1005/2009 on substances that deplete the ozone layer)

Dual-Use Regulation (428/2009)

Contains no substance subject to the COUNCIL REGULATION (EC) No 428/2009 of 5 May 2009 setting up a Community regime for the control of exports, transfer, brokering and transit of dual-use items.

VOC Directive (2004/42)

VOC content : 0 % (EU Directive 2010/75)

Detergent Regulation (648/2004)

Labelling of contents	
Component	%
disinfectants	

Explosives Precursors Regulation (2019/1148)

Contains no substance(s) listed on the Explosives Precursors list (Regulation EU 2019/1148 on the marketing and use of explosives precursors)

Drug Precursors Regulation (273/2004)

Contains no substance(s) listed on the Drug Precursors list (Regulation EC 273/2004 on the manufacture and the placing on market of certain substances used in the illicit manufacture of narcotic drugs and psychotropic substances)

15.1.2. National regulations

No additional information available

15.2. Chemical safety assessment

No chemical safety assessment has been carried out

SECTION 16: Other information

Abbreviations and acronyms:	
ADN	European Agreement concerning the International Carriage of Dangerous Goods by Inland Waterways
ADR	European Agreement concerning the International Carriage of Dangerous Goods by Road
ATE	Acute Toxicity Estimate
BCF	Bioconcentration factor
BLV	Biological limit value
BOD	Biochemical oxygen demand (BOD)
COD	Chemical oxygen demand (COD)
DMEL	Derived Minimal Effect level
DNEL	Derived-No Effect Level
EC-No.	European Community number
EC50	Median effective concentration
EN	European Standard
IARC	International Agency for Research on Cancer
IATA	International Air Transport Association
IMDG	International Maritime Dangerous Goods
LC50	Median lethal concentration

exeol wipes optimal

Safety Data Sheet

according to the REACH Regulation (EC) 1907/2006 amended by Regulation (EU) 2020/878

Abbreviations and acronyms:	
LD50	Median lethal dose
LOAEL	Lowest Observed Adverse Effect Level
NOAEC	No-Observed Adverse Effect Concentration
NOAEL	No-Observed Adverse Effect Level
NOEC	No-Observed Effect Concentration
OECD	Organisation for Economic Co-operation and Development
OEL	Occupational Exposure Limit
PBT	Persistent Bioaccumulative Toxic
PNEC	Predicted No-Effect Concentration
RID	Regulations concerning the International Carriage of Dangerous Goods by Rail
SDS	Safety Data Sheet
STP	Sewage treatment plant
ThOD	Theoretical oxygen demand (ThOD)
TLM	Median Tolerance Limit
VOC	Volatile Organic Compounds
CAS-No.	Chemical Abstract Service number
N.O.S.	Not Otherwise Specified
vPvB	Very Persistent and Very Bioaccumulative
ED	Endocrine disrupting properties

Other information

: Since the user's working conditions are not known by us, the information supplied on this safety data sheet is based on our current level of knowledge and on national and community regulations. The mixture must not be used for other uses than those specified in section 1 without having first obtained written handling instructions. It is at all times the responsibility of the user to take all necessary measures to comply with legal requirements and local regulations.

The classification complies with

: ATP 12

Safety Data Sheet (SDS), EU

This information is based on our current knowledge and is intended to describe the product for the purposes of health, safety and environmental requirements only. It should not therefore be construed as guaranteeing any specific property of the product.