



Viale G.di Vittorio, 30  
20048 Pantigliate (MI) Italy  
Tel. (+39) 02.55230061  
[www.histoline.com](http://www.histoline.com)  
email: [histoline@histoline.com](mailto:histoline@histoline.com)

# 2026

## Vacuum Tissue Processor HISTO-PRO 200 User Manual

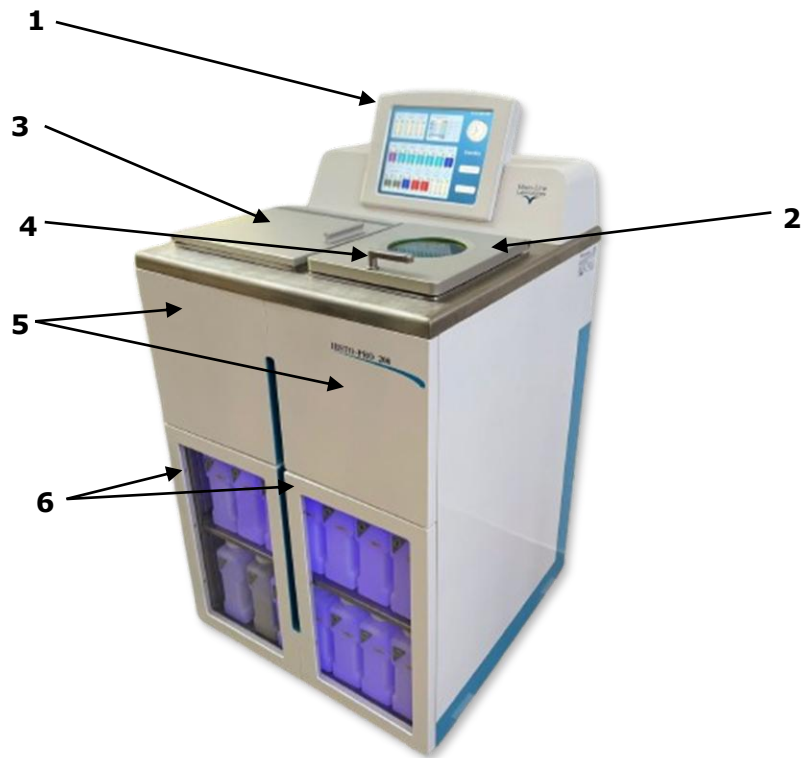


Revision date: 19/01/2026

### 3. Instrument features and specifications

#### 3.1 Overview-instrument

##### Front Panel



1. LCD Screen

S4 2. Retort

3. Paraffin Tank

4. Lock handle of Retort

5. Drain paraffin port

6. Door

##### Rear Panel

7. [Reagent filling time]

It is recommended to adopt default values.

8. [Reagent washing time 14]

Recommended number of Washing 14  $\geq$  2.

9. [Reagent washing time 15]

Recommended number of Washing 15  $\geq$  1.

10. [Stir interval]

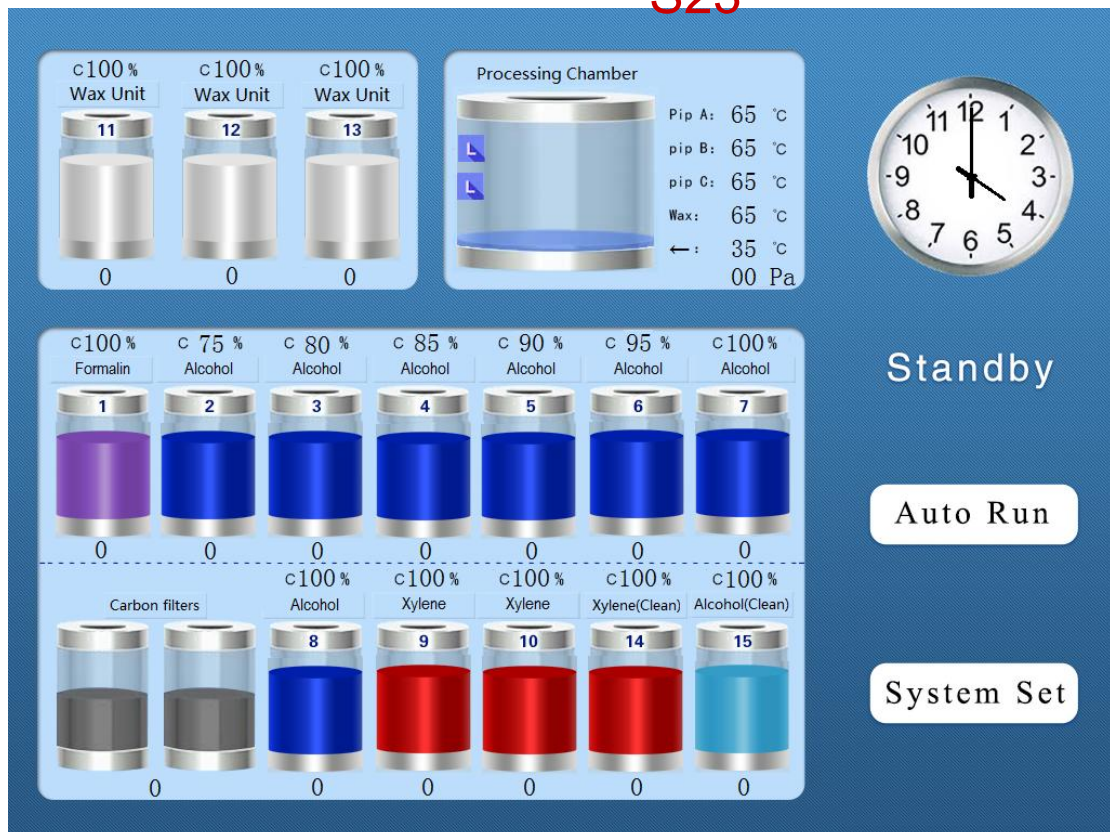
It is recommended to adopt default values.

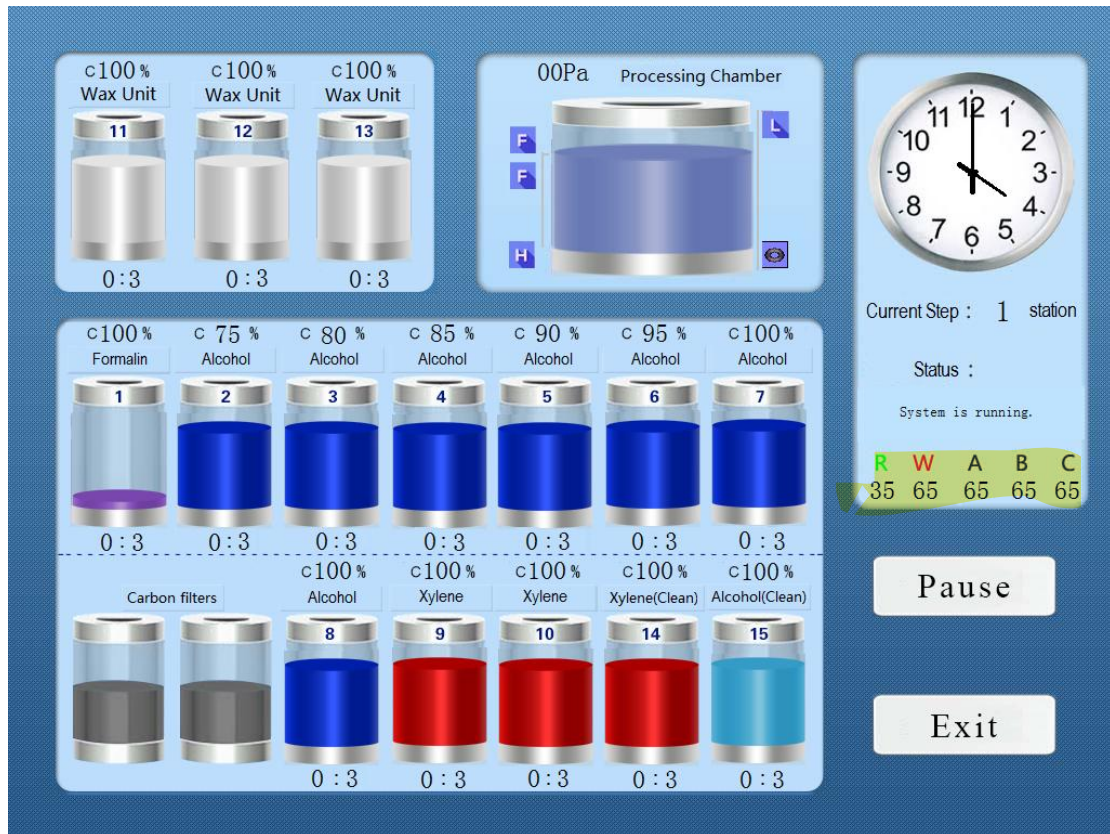
11. [Temperature]

It is recommended to adopt default values.

Press [SAVE] to save these parameters. Press [Back] to back the standby interface as below.

S23



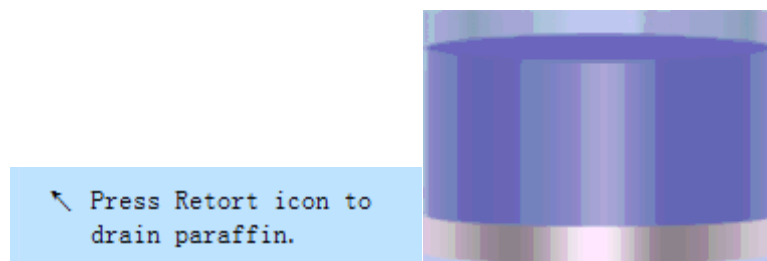


S23

Note: During the operation of the equipment, any key in the display shall not be arbitrarily pressed. If it is necessary to open the cover and other temporary operations, please press the [Pause] key, the equipment will automatically suspend operation. To restore the operating environment, close the handle and press the [Pause] button again to continue the running.

### STEP 3

Finally, when the paraffin in tank 13 needs to be emptied, the display will show the following message. Press the Chamber icon on the screen to confirm the paraffin emptiness.



## 5.10 Samples protection

### Power supply failure

During running automatically, if main power supply failure, as soon as power supply recover, it will go on running from the pause step.

### Retort Safe Switch is turn on

S25



(Fig.13)

On the right handle of retort, there is a Safe Switch fixed. While retort in vacuum running, if the Safe switch is turned on, the running will stop immediately and show message on screen to remind customer.

### S24 Retort reagent level is over than the Full Level Sensor



(Fig.14)

There are 3 Level Sensors totally in retort:

- L** Lower sensor, for Low Level processing.
- H** Higher sensor, for High Level processing.
- F** Overflow sensor, this is the highest level for reagent in retort.

If retort reagent level is over than the Full level sensor, it will stop running immediately.