

BMI® Medical

Shunting System



BMI® Medical

Ventricular Catheter 06118, 06118S

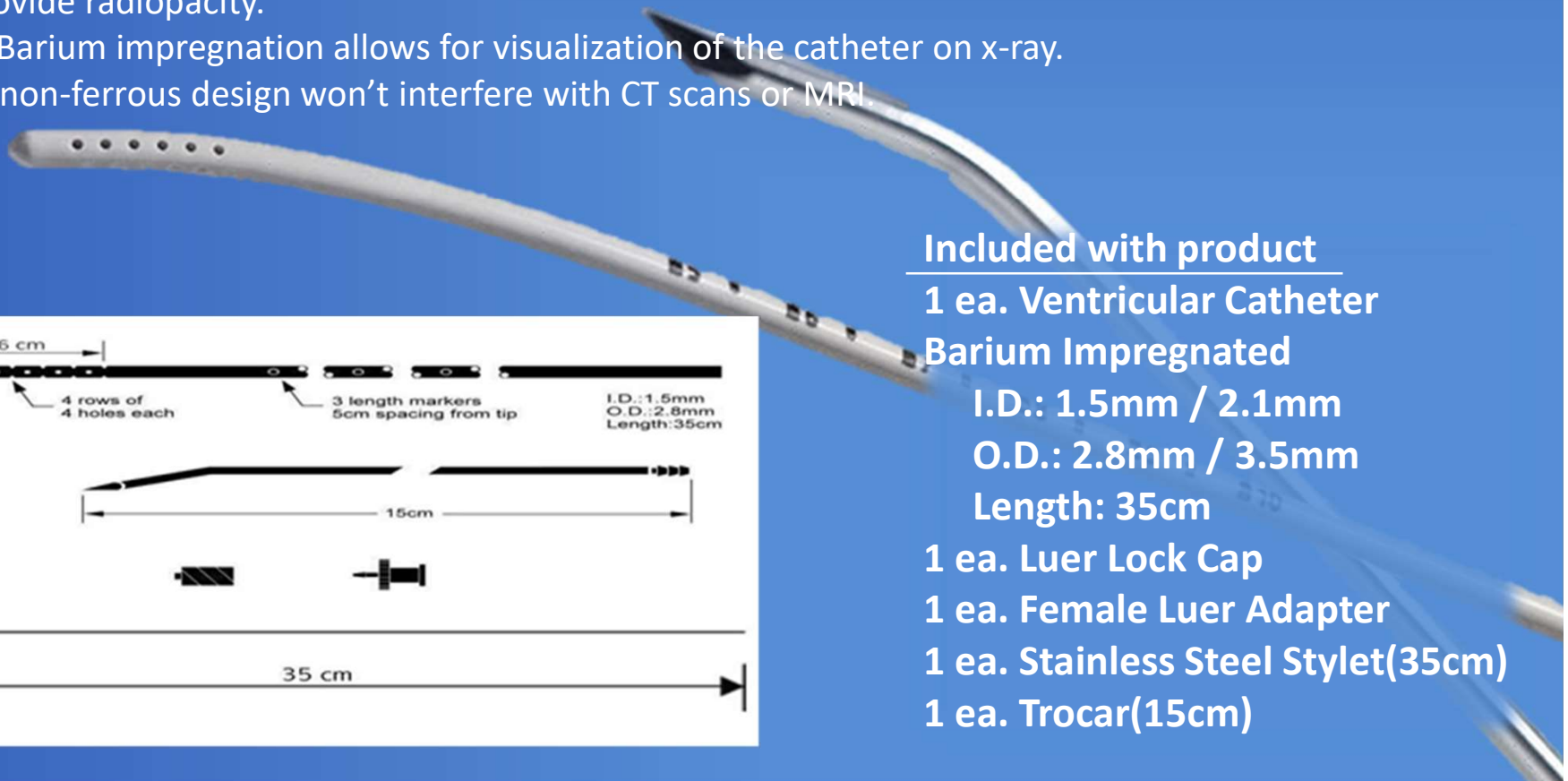
Barium impregnated silicone catheter.

Kink and compression resistant.

Stainless steel stylet allows catheter to be directed during catheter placement.

The catheter is fabricated from silicone elastomer tubing impregnated with barium to provide radiopacity.

- Barium impregnation allows for visualization of the catheter on x-ray.
- non-ferrous design won't interfere with CT scans or MRI.



Included with product

1 ea. Ventricular Catheter
Barium Impregnated

I.D.: 1.5mm / 2.1mm

O.D.: 2.8mm / 3.5mm

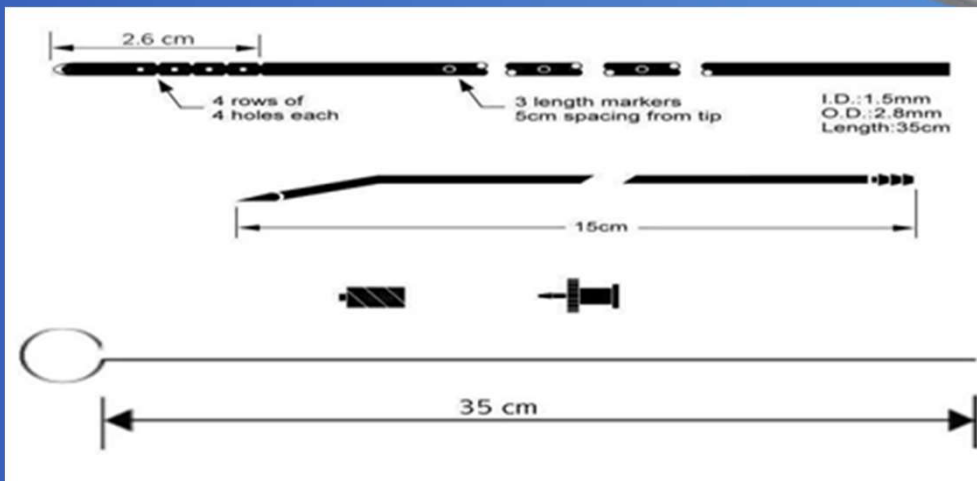
Length: 35cm

1 ea. Luer Lock Cap

1 ea. Female Luer Adapter

1 ea. Stainless Steel Stylet(35cm)

1 ea. Trocar(15cm)



BMI® Medical

Wellong Instruments Co., Ltd.

E-mail : cctco@ms35.hinet.net

Phone Number : +886-2-25719829 · +886-2-25413710

Fax Number : +886-2-25627884

Address : 2F., No.63, Linsen N. Rd., Zhongshan Dist.,
Taipei City 104, Taiwan (R.O.C.)