

# BMO-200B

## Patient Monitor

Suitable for ICU/CCU, Postoperative observatory,  
Emergency room, General ward, etc



## ADVANTAGES AT A GLANCE

- 12.1" color TFT LCD screen with multi channel waveforms display
- Rechargeable high energy built in Li Battery
- Easy to learn, easy to use, simplified menus and delicate functions keys
- Easy connecting with central monitoring system 96 hours data storage
- Suitable for adult, pediatrics and neonates
- Monitors end-tidal CO2 and inspired CO2 accuracy at high respiration rates
- Gas monitoring with cutting edge water filter tube



## ① Vital signs show perfectly

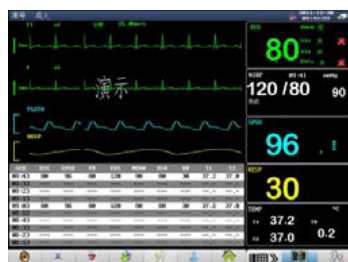
Suitable for ICU/CCU, Postoperative observatory,  
Emergency room, General ward, etc



Standard Interface



Max 8 waveform display simultaneously,  
max 6 leads ECG waveforms display



Trend graphs



Big Font interface



Durable probes  
connector with high quality



Build in Thermal Recorder

## ② Advanced

Our monitor could be used for Adult, Pediatric  
and Neonatal.

Our monitor has been welcomed by the  
doctors because of its stability in service  
reliability in operation and simplicity in  
maintenance.

BMV Medical, win the reputation by  
providing high quality products.

Conformable handle  
solid and easy take.

## ③ Data Storage – stable and fast

- 400 groups NIBP measurements
- 72 hours Trend data and Trend graphs
- 200 groups Alarm events reviewing
- 12 hours Wave forms reviewing
- Supporting for Arrhythmia analysis and drug dose calculation

## ④ Alarming – more safe and reliable

3 level Audible and visual alarming,  
Dual alarm light for physiological and technical  
alarming

## ⑤ Standard Parameter: ECG, RESP, NIBP, SpO2, PR, TEMP Optional: 2-IBP, EtCO2, Touch screen, Build in thermal printer



# SYS-50 Syringe Pump

## Simple and Comfortable

### ◆ 3.5" Touch screen operation

Large and clear user interface, providing medical staff with a pleasant visual experience and facilitating real-time observation of the infusion status.

### ◆ IV set management

A standard fitted tube clamp will prevent iv-sets entanglement and enhance infusion control.

## Innovative and Safe

- ◆ certified by EN1789 standard for ambulances and medical transportation vehicles
- ◆ Syringe slider protection
- ◆ Internal battery up to 20 hours continuous power supply.

## Information interconnection

- ◆ Optional built-in WiFi module.
- ◆ Can connected to HIS/CIS via WLAN or LAN.
- ◆ Can connected to MP-900 infusion central monitoring system to implement centralized monitoring of all infusions.

## Smart and Convenient

- ◆ 8 infusion modes: Adapted for various clinical departments and a variety of special drugs.
- ◆ Continuous titration: Changing the flow rate without stopping the infusion.

Simplified  
Smart



## Specifications

Dimension:	362(L) X 151(H) X 130(W)mm
Weight:	1.8kg (including battery)
Screen:	3.5 inch LCD touch screen
Classification:	Type CF, Class I, IP24
Syringe types:	All standard syringes of 5ml, 10ml, 20ml, 30ml, 50ml, 60ml

## Basic parameter

<b>Infusion mode:</b>	Rate, Time, Weight, Sequence, Trapezia, Loading dose, Micro, TIVA
<b>Infusion rate range:</b>	0.10-2000.0(ml/h), minimum increments 0.01ml/h
<b>VTBI range:</b>	0.1-9999ml
<b>Accumulated volume:</b>	0.0-99999.99ml
<b>Accuracy:</b>	≤2%
<b>KVO rate:</b>	0.1-5ml/h
<b>Bolus rate:</b>	0.10-2000.0(ml/h)
<b>Occlusion level:</b>	11 levels selectable, 225mmHg- 975mmHg

## Special function

<b>Recent therapy:</b>	20 recent therapies are recorded and can be used for rapid infusion
<b>Rate change during infusion:</b>	Infusion rate can be changed during infusion without stop.
<b>Auto screen lock:</b>	Available.
<b>Repeated Alarm:</b>	The Alarm sounds again in 2 minutes, if the alarm is not resolved but set mute only.
<b>Storage:</b>	Maximum 2000 records can be stored and reviewed.
<b>Sound volume:</b>	11 levels selectable
<b>Power supply switching:</b>	When AC/DC power supply is cut off, the infusion automatically switch to internal battery supply

## Power supply

<b>AC power:</b>	100-240, 50/60 Hz, power consumption 45VA
<b>External DC power:</b>	DC 12 V, 1.5A
<b>Internal battery:</b>	Lithium battery 11.1V 1500mAh or Lithium battery 11.34V 2900mAh

Battery VS Charging time:			
Configuration	Fast charging time(Power off)	Normal charging time(Power on)	Battery Operation time
One 1500mAh@11.1V battery	3 hours up to 95% percentage, less than 4 hours to full	6 hours to full	Not less than 8 hours
Two 1500mAh@11.1V batteries	6 hours up to 95% percentage, less than 8 hours to full	12hours to full	Not less than 15 hours
Two 2900mAh@11.34V batteries	12 hours up to 95% percentage, less than 16 hours to full	24hours to full	Not less than 22 hours
NOTE:Infusion at 5ml/h with new battery under room temperature			

## Connectivity

<b>WiFi/Wired:</b>	Available
<b>Data interface:</b>	USB

## Safe conditions

	Temperature	Humidity	Pressure altitude
<b>Operating conditions:</b>	5°C to 40°C	15% to 95% RH, non-condensing	70.0 kPa-106.0 kPa
<b>Storage and Shipping conditions:</b>	-20°C to +55°C	10% to 95% RH, non-condensing	22.0 kPa-107.4 kPa



**MEDCAPTAIN MEDICAL TECHNOLOGY CO., LTD**

Add: 12th Floor, Baiwang Research Building, No.5158 Shahe West Road, Xili, Nanshan, Shenzhen, P.R. China

Tel: +86 755 26953369

Fax: +86 755 26001651

E-mail: info@medcaptain.com

Website: www.medcaptain.com



**DISTRIBUTOR:**

MEDCAPTAIN is a trade mark of Medcaptain Medical Technology Co., Ltd.  
Specifications are subject to change without prior notice.  
©2015-2017 Medcaptain Medical Technology Co., Ltd. All rights reserved.



Product Service

# EC Certificate

## Full Quality Assurance System

Directive 93/42/EEC on Medical Devices (MDD), Annex II excluding (4)  
(Devices in Class IIa, IIb or III)

No. G1 14 09 81250 002

**Manufacturer:****BMV Technology Co.,Ltd**

4/F, BMV of Yinjin Building,  
Block 71, Baoan Centre District,  
Shenzhen 518010, Guangdong,  
PEOPLE'S REPUBLIC OF CHINA

**EC-Representative:****Wellkang Ltd**

Suite B, 29 Harley Street  
LONDON  
W1G 9QR  
UNITED KINGDOM

**Product****Patient Monitors****Category(ies):**

The Certification Body of TÜV SÜD Product Service GmbH declares that the aforementioned manufacturer has implemented a quality assurance system for design, manufacture and final inspection of the respective devices / device categories in accordance with MDD Annex II. This quality assurance system conforms to the requirements of this Directive and is subject to periodical surveillance. For marketing of class III devices an additional Annex II (4) certificate is mandatory. See also notes overleaf.

**Report No.:**

748496336

**Valid from:**

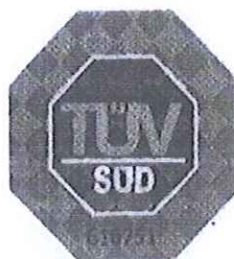
2018-10-30

**Valid until:**

2020-10-29

Date, 2018-10-30

Hans-Heiner Junker



TÜV SÜD Product Service GmbH is Notified Body with identification no. 0123

Page 1 of 2



Product Service

**EC Certificate****Full Quality Assurance System**

Directive 93/42/EEC on Medical Devices (MDD), Annex II excluding (4)  
(Devices in Class IIa, IIb or III)

**No. G1 14 09 81250 002****Facility(ies):**

BMV Technology Co.,Ltd

4/F, BMV of Yinjin Building, Block 71,Baoan Centre District,

Shenzhen 518010, Guangdong,PEOPLE'S REPUBLIC OF CHINA



Benannt durch/Designated by  
Zentralstelle der Länder  
für Gesundheitsschutz  
bei Arzneimitteln und  
Medizinprodukten  
www.zlg.de  
ZLG-BS-244.10.08



Product Service

# EC Certificate

Full Quality Assurance System

Directive 93/42/EEC on Medical Devices (MDD), Annex II excluding (4)  
(Devices in Class IIa, IIb or III)

**No. G1 086916 0017 Rev. 00**

**Manufacturer:**

**MEDCAPTAIN MEDICAL  
TECHNOLOGY CO., LTD.**

12th Floor, Baiwang Research Building  
No.5158 Shahe West Road  
Xili, Nanshan  
518055 Shenzhen, Guangdong  
PEOPLE'S REPUBLIC OF CHINA

**EC-Representative:**

Shanghai International Holding Corp. GmbH (Europe)  
Eiffestraße 80, 20537 Hamburg, GERMANY

**Product Category(ies):** Syringe Pump, Infusion Pump, Infusion Workstation, Sterile  
Syringes for single use, Sterile Infusion sets for single use,  
DVT Preventive Pump

The Certification Body of TÜV SÜD Product Service GmbH declares that the aforementioned manufacturer has implemented a quality assurance system for design, manufacture and final inspection of the respective devices / device categories in accordance with MDD Annex II. This quality assurance system conforms to the requirements of this Directive and is subject to periodical surveillance. For marketing of class III devices an additional Annex II (4) certificate is mandatory. See also notes overleaf.

**Report No.:**

GZ18117EXT01

**Valid from:**

2019-02-17

**Valid until:**

2024-02-16

**Date,** 2019-01-30

Stefan Preiß



Benannt durch/Designated by  
Zentralstelle der Länder  
für Gesundheitsschutz  
bei Arzneimitteln und  
Medizinprodukten  
www.zlg.de  
ZLG-BS-244.10.08



Product Service

# EC Certificate

Full Quality Assurance System

Directive 93/42/EEC on Medical Devices (MDD), Annex II excluding (4)  
(Devices in Class IIa, IIb or III)

**No. G1 086916 0017 Rev. 00**

## Facility(ies):

MEDCAPTAIN MEDICAL TECHNOLOGY CO., LTD.  
12th Floor, Baiwang Research Building, No.5158 Shahe West  
Road, Xili, Nanshan, 518055 Shenzhen, Guangdong, PEOPLE'S  
REPUBLIC OF CHINA

MEDCAPTAIN MEDICAL TECHNOLOGY CO., LTD.  
1-4 Floor, 11th Factory Building, Nangang 1st Industrial Park,  
Songbai Road, Xili, Nanshan, 518055 Shenzhen, Guangdong,  
PEOPLE'S REPUBLIC OF CHINA

MEDCAPTAIN MEDICAL TECHNOLOGY CO., LTD.  
Room No. 401, Block B, Weike Science and Technology Building,  
Dongming Avenue, Guangming Subdistrict, Guangming New  
District, 518107 Shenzhen, Guangdong, PEOPLE'S REPUBLIC  
OF CHINA



Product Service

# CERTIFICATE

No. Q1N 14 10 81250 003

**Holder of Certificate:** BMV Technology Co., Ltd.  
4/F, BMV of Yinjin Building,  
Block 71, Baoan Centre District,  
Shenzhen 518010, Guangdong,  
PEOPLE'S REPUBLIC OF CHINA

**Facility(ies):** BMV Technology Co., Ltd.  
4/F, BMV of Yinjin Building, Block 71, Baoan Centre  
District, 518010, Shenzhen, Guangdong, PEOPLE'S  
REPUBLIC OF CHINA

**Certification Mark:**



**Scope of Certificate:** Design and Development, Production and Distribution  
of Patient Monitors

**Applied Standard(s):** EN ISO 13485:2012 + AC:2012  
Medical devices - Quality management systems -  
Requirements for regulatory purposes  
(ISO 13485:2003 + Cor 1:2009)  
DIN EN ISO 13485:2012

The Certification Body of TÜV SÜD Product Service GmbH certifies that the company mentioned above has established and is maintaining a quality management system, which meets the requirements of the listed standard(s). See also notes overleaf.

**Report No.:** 748496336

**Valid from:** 2018-10-30

**Valid until:** 2020-10-29

**Date,** 2018-10-30

Hans-Heiner Junker



Page 1 of 1

**DAKKS**  
Deutsche  
Akkreditierungsstelle  
D-2M 11321 01-00



Product Service

# CERTIFICATE

No. Q1N 16 12 86916 007

**Holder of Certificate:** **MEDCAPTAIN MEDICAL  
TECHNOLOGY CO., LTD.**

12th Floor, Baiwang Research Building  
No.5158 Shahe West Road  
Xili, Nanshan  
518055 Shenzhen, Guangdong  
PEOPLE'S REPUBLIC OF CHINA



**Certification Mark:**



**Scope of Certificate:** Design and Development, Production and Distribution of Syringe Pump, Infusion Pump, Infusion Workstation, Infusion Central Monitoring System, Sterile Syringes for single use, Sterile Infusion sets for single use and DVT Preventive Pump

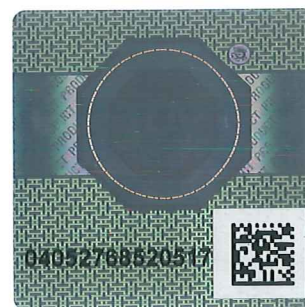
The Certification Body of TÜV SÜD Product Service GmbH certifies that the company mentioned above has established and is maintaining a quality management system, which meets the requirements of the listed standard(s). See also notes overleaf.

**Report No.:** GZ1711701

**Valid from:** 2017-03-17  
**Valid until:** 2020-02-16

**Date,** 2017-03-17

*S. Preiß*  
Stefan Preiß



Page 1 of 2





Product Service

**CERTIFICATE****No. Q1N 16 12 86916 007**

**Applied Standard(s):** EN ISO 13485:2012 + AC:2012  
 Medical devices - Quality management systems -  
 Requirements for regulatory purposes  
 (ISO 13485:2003 + Cor. 1:2009)  
 DIN EN ISO 13485:2012

**Facility(ies):** MEDCAPTAIN MEDICAL TECHNOLOGY CO., LTD.  
 1-4 Floor, 11th Factory Building, Nangang 1st Industrial Park,  
 Songbai Road, Xili, Nanshan, 518055 Shenzhen, Guangdong,  
 PEOPLE'S REPUBLIC OF CHINA

MEDCAPTAIN MEDICAL TECHNOLOGY CO., LTD.  
 12th Floor, Baiwang Research Building, No.5158 Shahe West  
 Road, Xili, Nanshan, 518055 Shenzhen, Guangdong, PEOPLE'S  
 REPUBLIC OF CHINA