


DECLARATION

We **IDEAL MAKİNA ENDÜSTRİ ÜRÜNLERİ SAN. VE TİC. A.Ş.**, who are official manufacturers of Oxygen Generator System & accessories, IDEAL MAKİNA Company having factories at Emek, Ordu Cd. No:16, 34785 Dudullu Osb/Sancaktepe/İstanbul do hereby confirm that the proposed **20 ft HC Containers of IDEAL Oxygen Generator Systems** comply with the specifications listed below:

Container type system	Yes	Yes, 20 ft HC Container
Transportable (forklift and ISO screw corners allowed)	Yes	Yes
Plug and play system	Yes	Yes
The total area, height and volume of the container must be sufficient for the access of technical personnel for the purpose of monitoring and technical maintenance.	Yes	Yes
Resistant to mechanical shocks (handling or movement)	Yes	Yes
The container or construction must be surface treated and painted to prevent corrosion	Yes	Yes
The floor must be covered with a washable surface to maintain cleanliness	Yes	Yes
Air intake filter in the container	Yes	Yes
Drainage system for the evacuation of condensate from the compressor and dryer.	Yes	Yes
Air conditioning to maintain indoor temperature and humidity strictly in accordance with the recommendations provided by the manufacturer.	Yes	Yes
Independent air intake, thermally conditioned by the compressor	Yes	Yes
The operating temperature of the container must ensure insulation	Yes	Yes
thermal for temperatures between –20°C and +45°C (±10°C)	Yes	Yes
Waterproof container	Yes	Yes
Resistant and sealed against dust, sand and salt spray	Yes	Yes
Interior lighting system for the operator	Yes	Yes
Emergency interior lighting system.	Yes	Yes
Outdoor lighting system in the entrance area.	Yes	Yes
System for monitoring the oxygen concentration of the ambient air in the container	Yes	Yes
A minimum of 4 220V electrical sockets intended for corrective maintenance and preventive maintenance should be installed.	Yes	Yes (Included Electrical Box with min 4 220V electrical sockets)
Smoke detectors with alarm	Yes	Yes

Alpaslan Tekin
General Manager

Dated on 16.02.2023



IDEAL MAKİNA END. ÜRÜN. SAN. VE TİC. A.Ş.
Esenkent Mh. Nato Yolu Cd. No:277 34776 Ümraniye-İST.
Sarıgazi V.D. 470 097 1538 Tic. Sic. No: 530388
www.idealmakina.com

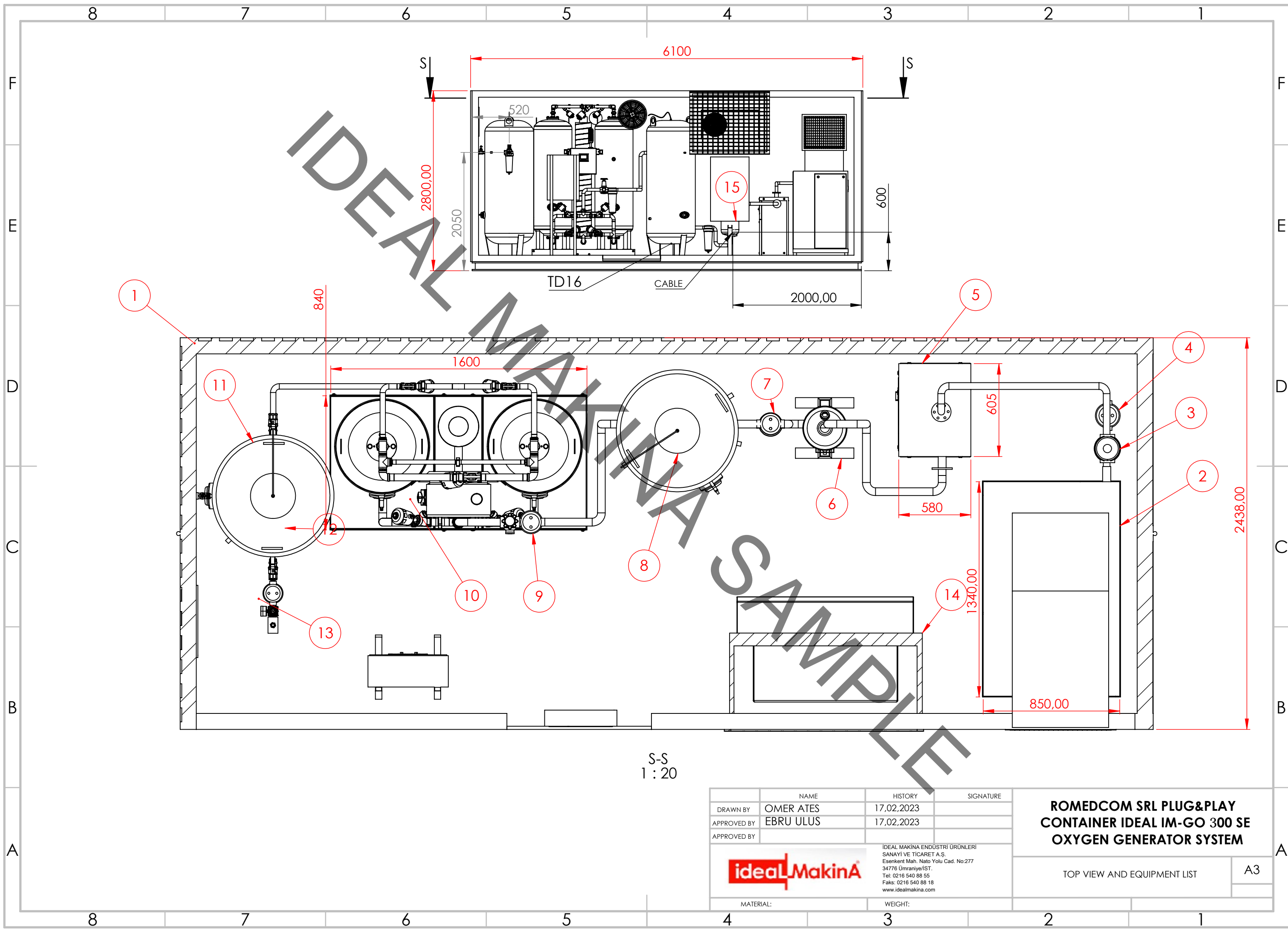
High Cube 20 ft ISO Container for Ideal IM-GO 300 SE Oxygen Generator System



- Exhaust & suction ducts, two main doors, one emergency exit door, air conditioner, interior lightning, emergency interior lightning, main power distribution cabinet, all cabling and piping, outdoor lightning system, ambient oxygen sensor are included.
- All equipments will be connected each other and tested at İdeal Makina workshop in İstanbul.
- There will be High Cube 20 ft ISO locked, heavy duty, heat and noise insulated container where all equipments will be assembled in.
- The main power distribution panel with all required thermal switches will be installed in container.
- The mechanical and electrical connections will be tested before delivery.
- FAT (Factory Acceptance Test) will be done and reported by İdeal Makina Technical Service Team.
- No installation on-site, No leakage possibility, Easy commissioning on-site, PLUG & PLAY.

Alpaslan Tekin
General Manager
Dated on 17.02.2023

idealMakina®
İDEAL MAKİNA END. ÜRÜN. SAN. VE TİC. A.Ş.
Esenkent Mh. Nato Yolu Cd. No:277 34776 Ümraniye-İST.
Sarıgazi V.D 470 097 1928 Tic. Sic. No: 530388
www.idealmakina.com



S-S
1 : 20

NAME	HISTORY	SIGNATURE	ROMEDCOM SRL PLUG&PLAY CONTAINER IDEAL IM-GO 300 SE OXYGEN GENERATOR SYSTEM	
DRAWN BY	OMER ATES	17.02.2023		
APPROVED BY	EBRU ULUS	17.02.2023		
APPROVED BY				
idealmakina		IDEAL MAKINA ENDÜSTRİ ÜRÜNLERİ SANAYİ VE TİCARET A.Ş. Esenkent Mah. Nato Yolu Cad. No:277 34776 Ümraniye/İST. Tel: 0216 540 88 55 Faks: 0216 540 88 18 www.idealmakina.com	TOP VIEW AND EQUIPMENT LIST	
MATERIAL:		WEIGHT:	A3	

It is very easy to produce your own oxygen gas and fill your empty oxygen cylinders with Ideal Makina Oxygen Generators and mobile container cylinder filling stations!

Consisting of high efficiency equipment selected to work together in harmony, the only need for Container Oxygen Generator System is the power connection. It is very easy to produce your own oxygen gas and fill your empty oxygen cylinders with Ideal Makina Oxygen Generators and mobile container cylinder filling stations! By producing your own oxygen gas which is much more economical compared to the cost of your cylinder purchasings, you can fill your cylinders by yourself and can save considerably.

Pipe connections, electrical wiring, main energy distribution together with control panel and all accessories in the container are assembled in the most accurate way and ready to be used. The produced high purity oxygen gas is being filled into oxygen cylinder bundles at 150barg pressure and fully responds to your variable oxygen consumption. These systems are presenting the produced oxygen gas uninterruptedly in the desired quantity, required pressure and high purity.

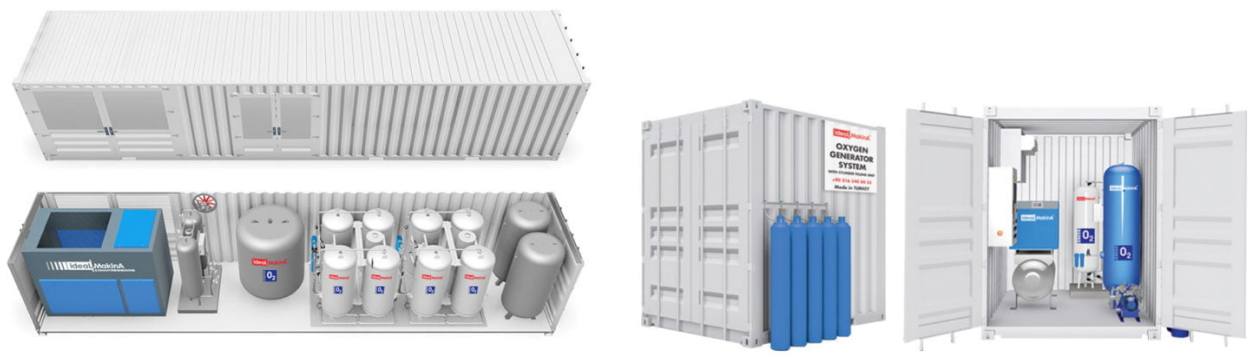
Deep experience of having installed more than 500 nitrogen & oxygen generator systems for more than 16 years; IDEAL MAKINA guarantees high quality of **Plug & Play** Oxygen Generator Systems.

With the container type oxygen cylinder filling station designed by İdeal Makina with a special design, you can produce oxygen gas much more economically compared to your cylinder purchasing costs and can make serious savings!

Please contact us for our container designs that are resistant to all atmospheric conditions and corrosion. They can provide the maximum working performance required for all sound and heat insulated system units.

ADVANTAGES

- Mobile, heavy duty, sound and heat insulated, ISO locked containers
- Ready system with all electrical and mechanical assemblies completed.
- Uninterrupted operation in summer and winter equipped with air conditioners and heaters
- Gas production and cylinders filling in any climate conditions on the field
- Factory-tested "ZERO LEAKAGE".
- Ease installation and commissioning on site.
- Easy transportation to another place when requested
- Little space usage with its compact structure.
- Main Power Distribution Panel
- User friendly, automatic "START STOP".
- Environment Friendly Design
- Ability to work with field type diesel electric generators



- All containers have ISO type lifting lugs and ISO locks.
- Suitable for transportation by road, sea and air freight.
- The lower chassis is made of 2/3 tear sheet metal over 100 NPU.
- Cab walls are made of 1,5mm, cabin ceiling is made of 2mm DKP trapeze sheet.
- The cabin insulation is covered with galvanized sheet on 5cm rock wool. In this way, sound and heat insulation is provided.
- G4 dust filter is used in air suction louvers.
- The isolation of the hot air ducts of the compressors is done with aluminum golf sheet on 5 cm rock wool.
- Cabin interior temperature is controlled by air conditioner and fan.
- A Main Electricity Distribution Board available in the cabin where the entire system can be controlled.
- Automatic Fire Prevention and Extinguishing Systems.
- 2 double wing container doors and 1 single wing service door on the cabin.
- Cabine primer paint is epoxy and topcoat is epoxy painted. Paint colour option according to the desired color codes.
- Details such as mechanical and electrical installations, lighting and **condensate** drain channels completed, all leakage tests are performed and ready for dispatch.

APPLICATION PHOTOS

