

TISSUE PROCESSING

Histo-Pro 300 Vacuum Tissue Processor

IVD CE



The Instrument

Histo-Pro 300 set a new standard in vacuum tissue processing.

Its unique reagent monitoring and management delivers significant reagent cost savings.

Superior process control, functional design, and precise temperature control ensure optimum specimen quality.

An active extraction process ensures efficient paraffin cleaning, which extends paraffin life, improves tissue quality, and reduces operating and reagents costs.

User safety is enhanced by a fully enclosed fume system and improved reagent bottle and cabinet design.

Through the control panel all the operating parameters like programs, temperatures, vacuum and levels can be freely modified

3 different reagent level according to sample quantity processed.

Histo-Pro 300 is available with Automatic fill/drain reagent system to prevent the risks of reagents contact. (Optional)

352

Display and Software

S1

Large Touch-screen color Liquid Crystal Display (LCD).
User-friendly, smart icons software.

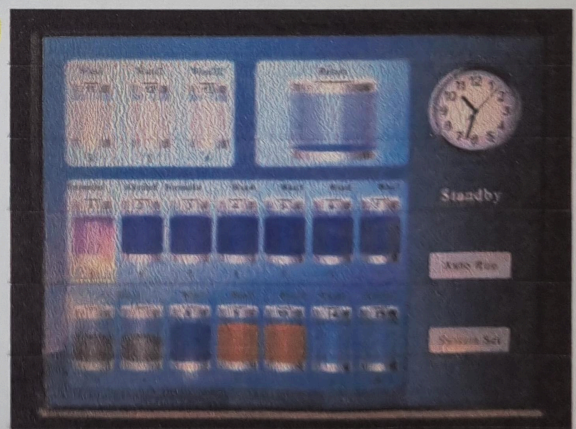
Alarm system for wrong operation and troubles

S9, 10, 11

Multiple specimen protection system.

The operator can set the different programs varied in duration, temperature.

Freely customized programs for retort cleaning cycle.



TISSUE PROCESSING



Capacities

Capacity about 300 cassettes

20 programs that consist of up to 10 reagent and 3 paraffin wax steps

Time for program step: 0 to 99 hours, 59 minutes

Up to 300 cassettes can be processed

Wax clean program

10 reagent bottles

3 wax baths a temperature: 50°C - 65°C

2 cleaning solution bottles

1 condensate bottle

1 carbon filter bottle

Maximum bottle volume: 6.0 lt

Retort

Reagent volume: 6.8 Lt

Temperature (paraffin): 50°C - 65°C

Temperature (reagents): ambient or 35°C

Temperature (cleaning reagents): 50°C - 65°C

Temperature accuracy: + 1°C

Filling time: up to 5 min

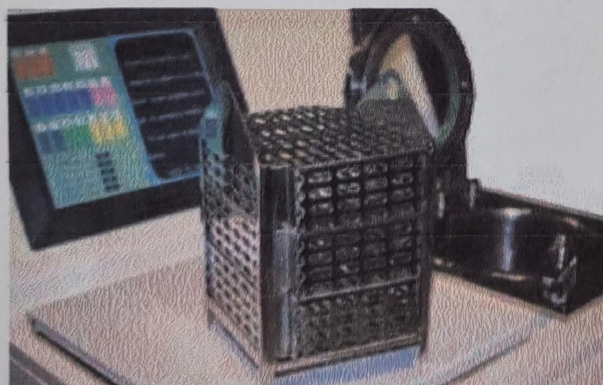
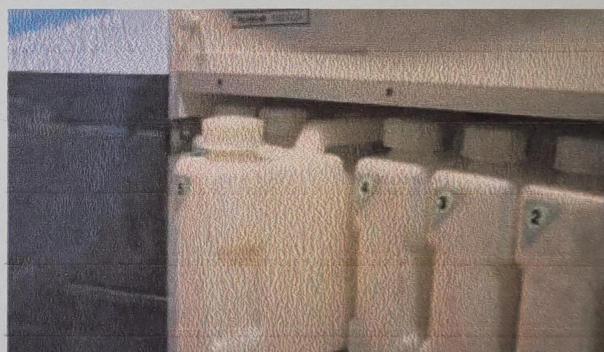
Drain time: up to 5 min

Impregnation vacuum: -70 kPa (g)

Impregnation pressure: 35 kPa (g)

Fill vacuum: -70 kPa (g)

Drain pressure: 35 kPa (g)



Technical Data

Nominal voltage: AC 220 V

Nominal frequency: 60 Hz

Main fuses: 10 A

Nominal power: 1500 W/A

Dry weight, unpacked: approx. 100 kg

Weight, packed: 120 kg

Operating temperature range: 15 °C to 35 °C

Relative humidity: 10 to 80 %

Recirculation (pump in/out): ON/OFF

Time between cycles: 15 min

Product	Size	Packaging	Code
Histo-Pro 300 Vacuum Tissue Processor	Unit	1 pc	HistoPro300

Web page Histoline

<https://www.histoline.com/en/pro300>

Histo-Pro 300 fully enclosed tissue processor. Designed for routine and research histopathology of up to 300 cassettes.

- Easy-to-use smart software with alarm and Multiple Sample protection system
- Histo-Pro 300 processes all biological tissues using standard reagents or no toxic reagents like **Diaphane** (isoparaffin based xylene substitute) and **Histo-Clear** (d-lemonene based xylene substitute).
- The processor is designed with optimized protocols and adaptable to all user needs.
- **Vacuum** and **pressure** are programmable for each processing step to enhance infiltration and speed up reagent exchange.
- Simplify user operations with a color touch screen and an **intuitive user interface**.
- Take advantage of our broad range of **consumables** specifically designed to meet your tissue processing needs

Product Features

Simple design and smart use

The **Pro300 tissue processor** is designed for smart paraffin infiltration of tissue. Straight forward routine user operations and a variety of 'Smart' features, such as quick start for commonly used programs, improve specimen quality and laboratory economy.

Ergonomic, attractive and modern design features rounded corners.

Start automates the start of **most common programs** and allows the technician to perform scheduling functions, such as defining a delayed end time by extending certain program steps.

Biopsy and standard protocols are prestored to shorten turnaround time and reduce the need to level workflow in the laboratory.



Full process control and saving coast



Real-time process data about key instrument settings, such as **current filling status**, temperature and pressure inside the retort, paraffin bath temperature, as well as status of the paraffin bath and retort heating systems, is always available.

An active extraction process ensures efficient reagents quality, which extends paraffin life, improves tissue quality, and reduces operating costs.

User safety is enhanced by a **fully enclosed fume system** and by the improved reagent bottle and cabinet design to prevent the risk of contact and **reagent carry-over**.

High quality specimens



514

Magnetic stirrer – for gentle circulation of the reagents, thus ensuring a uniform reagent temperature.

Programmable end time for infiltration programs. Three-step drainage of the retort (adjustable) to reduce reagent displacement. **Infiltration process** at **ambient pressure**, with **pressure**, **vacuum**, or a combination of both.

Alarm system for wrong operation and troubles. **Multiple specimen protection system.**

Large Touch-screen color Liquid Crystal Display (LCD).

User-friendly, smart icons software