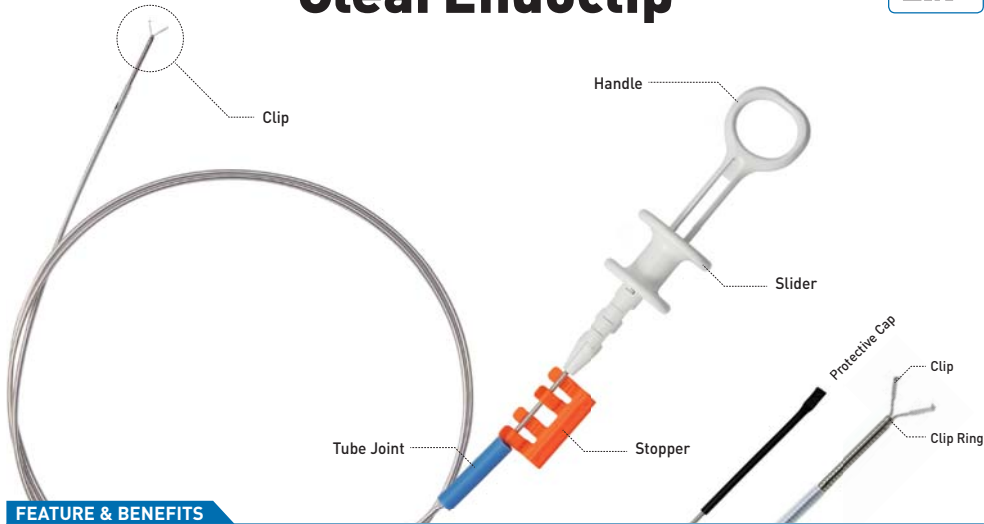


HEMOSTASIS

# ClearEndoclip



FEATURE & BENEFITS

**(1) 1:1 Rotation**

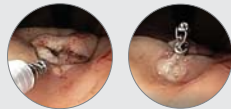
- Clip rotation with the handle at 1:1 ratio.  
(Tip : Hold the tube joint and Rotate the handle)

**(2) Installed Reopen function**

- Reopen and close for correct positioning prior to deployment.  
(Caution : Open and close up to five times prior to deployment)

**(3) Improved safety**

- The thickness of the clip is thinner than other products, and it can be tightly deployed to the lesion.



SPECIFICATION

Model	Sheath O.D	Clip Angle	Clip Length	Type of Rotation	Working Length	Number of Use	Validity of Sterilization
FM-CLD11-090(1650)	ø2.6mm	90°	11mm	Rotational	1,650mm	Single Use Only	3 years
FM-CLD11-090(2300)					2,300mm		

ERCP

# Fine-Grab Basket



FEATURE & BENEFITS

**(1) Standard Four-wire Basket**

- These products are made of 4 stainless steel wires in a hexagon shape which is the most popular and suitable for the requirement in the Bile and Pancreatic Ducts.

**(2) Precision in Configuration**

- 4 wires are arranged in high precision. So this configuration helps operator removes stones fast and safety.

**(3) Maintaining the Symmetry**

- These products are designed to maintain the symmetry even after the difficult stone manipulation.
- This special and strong structure could make users feel comfortable during ERCP.

SPECIFICATION

Model	Basket Opening Size	Basket Shape & Material	Sheath O.D	Working Length	Number of Use	Validity of Sterilization
FM-EG0002	15mm	Hexagon / 4 Wires Stainless Steel	ø2.40mm	2,000mm (+/- 500)	Single Use Only	3 years
FM-EG0003	20mm					
FM-EG0004	25mm					