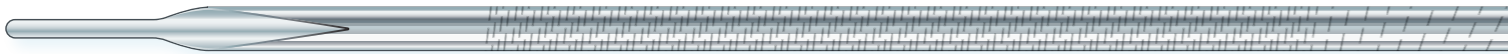


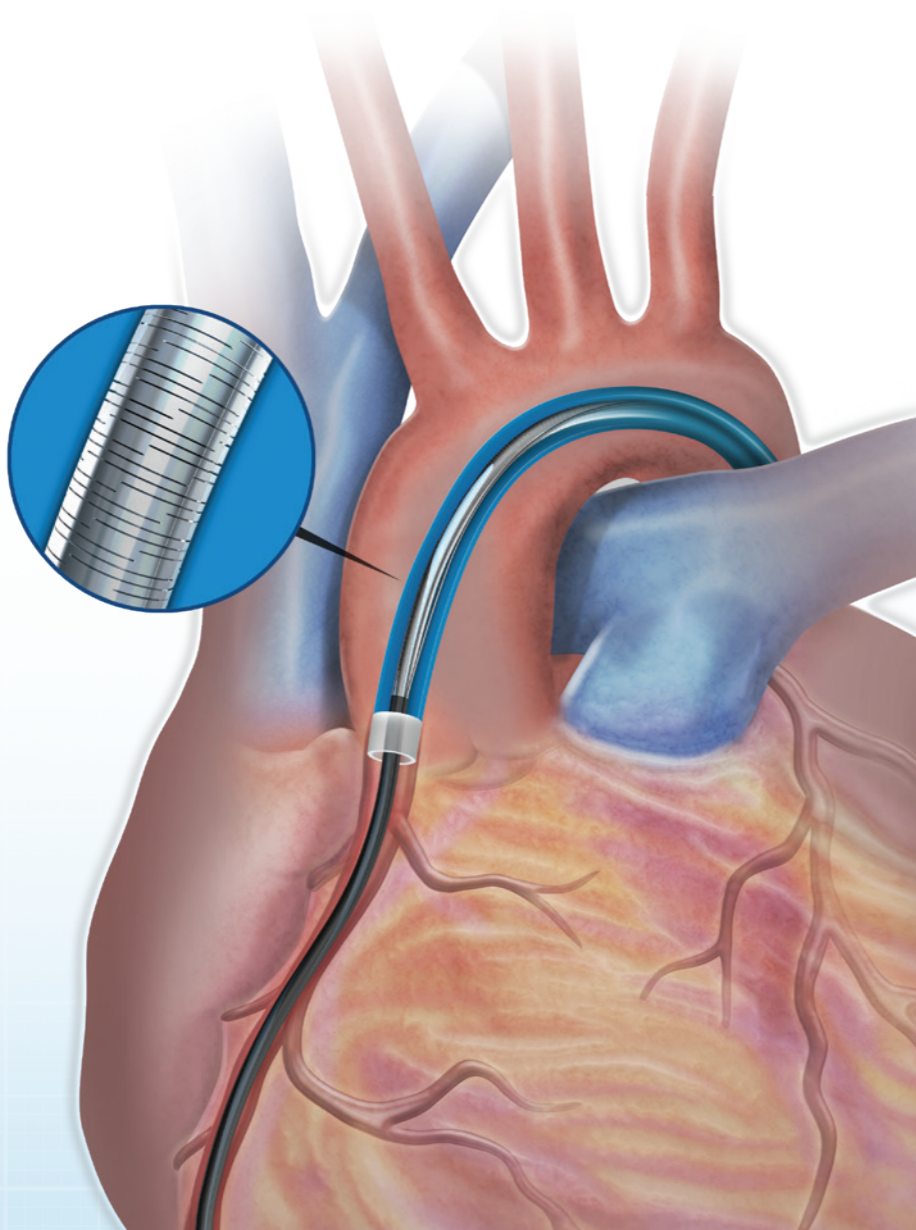
# Outstanding Deliverability

Enhanced delivery system for optimal balance of pushability, flexibility, and trackability

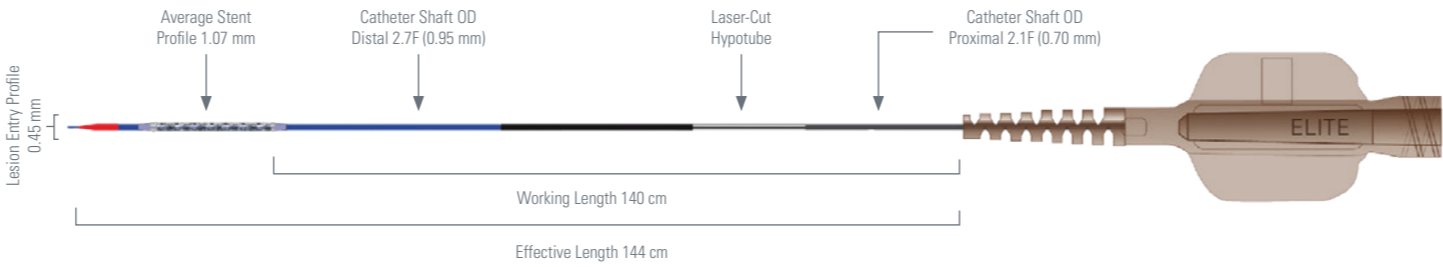


## Proprietary Laser-Cut Hypotube Technology

- 15% increase in pushability\*
- 19% more trackable than competitive DES\*\*
- Variable cut pattern specifically designed for coronary anatomy
- More than 300 cuts over 100 mm length



## Ordering Information



(mm)	8	12	16	20	24	28	32	38
2.25	H749 394130822 0	H749 394131222 0	H749 394131622 0	H749 394132022 0	H749 394132422 0	H749 394132822 0	H749 394133222 0	n/a
2.5	H749 394130825 0	H749 394131225 0	H749 394131625 0	H749 394132025 0	H749 394132425 0	H749 394132825 0	H749 394133225 0	H749 394133825 0
2.75	H749 394130827 0	H749 394131227 0	H749 394131627 0	H749 394132027 0	H749 394132427 0	H749 394132827 0	H749 394133227 0	H749 394133827 0
3.0	H749 394130830 0	H749 394131230 0	H749 394131630 0	H749 394132030 0	H749 394132430 0	H749 394132830 0	H749 394133230 0	H749 394133830 0
3.5	H749 394130835 0	H749 394131235 0	H749 394131635 0	H749 394132035 0	H749 394132435 0	H749 394132835 0	H749 394133235 0	H749 394133835 0
4.0	H749 394130840 0	H749 394131240 0	H749 394131640 0	H749 394132040 0	H749 394132440 0	H749 394132840 0	H749 394133240 0	H749 394133840 0

**Boston Scientific**  
Advancing science for life™

All trademarks are the property of their respective owners.

**Caution:** The law restricts these devices to sale by or on the order of a physician. Indications, contraindications, warnings, and instructions for use can be found in the product labelling supplied with each device. Information for the use only in countries with applicable health authority product registrations. Information contained herein is for use or distribution outside the US, France, and Japan only. For a complete list of products, please contact your Boston Scientific representative.

IC- 553307-AA MAY 2018 CreativeServices

[www.bostonscientific-international.com](http://www.bostonscientific-international.com)

© 2017 Boston Scientific Corporation or its affiliates. All rights reserved.  
DINCAR2730EA

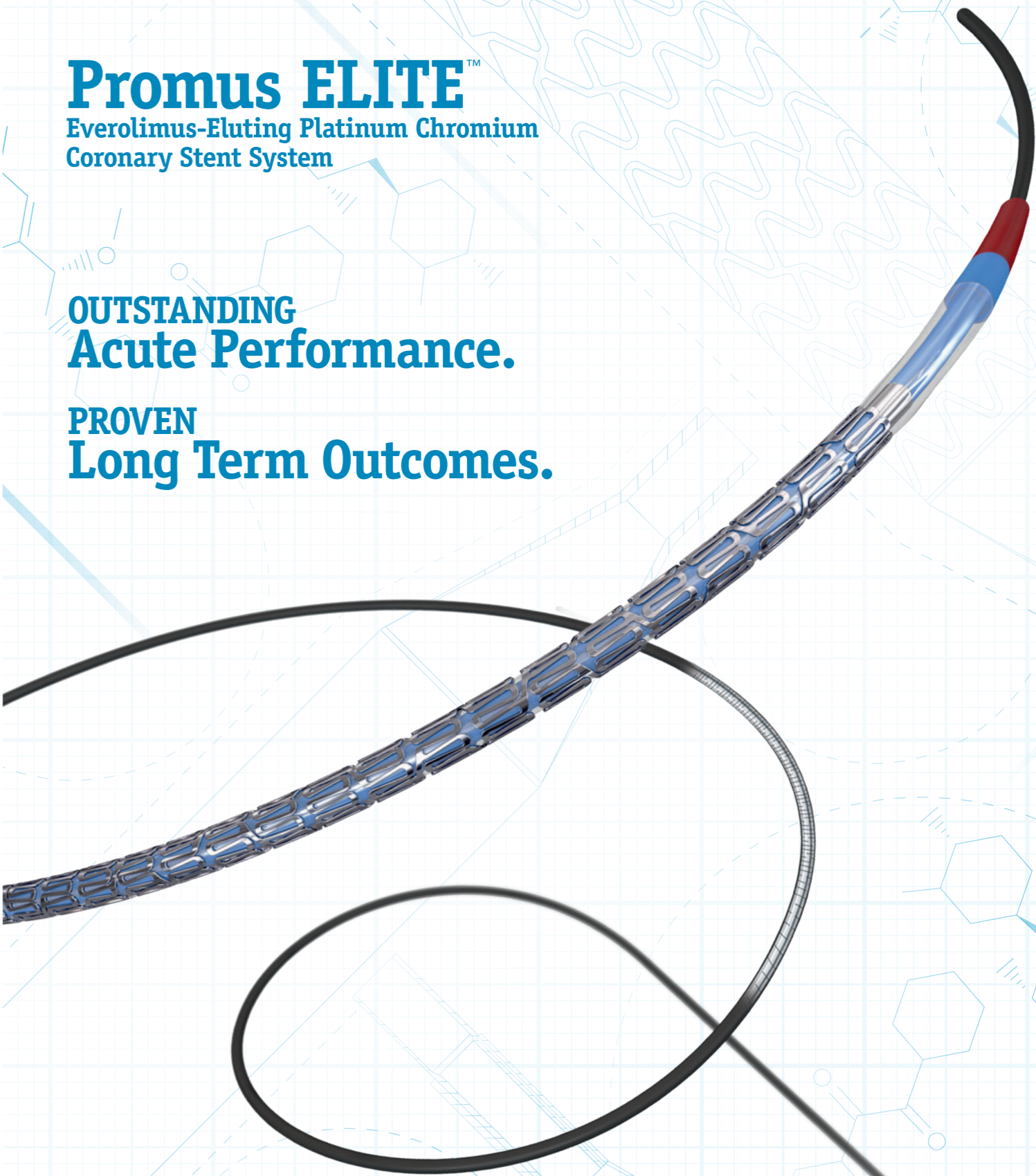
**Boston Scientific**  
Advancing science for life™

# Promus ELITE™

Everolimus-Eluting Platinum Chromium  
Coronary Stent System

**OUTSTANDING  
Acute Performance.**

**PROVEN  
Long Term Outcomes.**

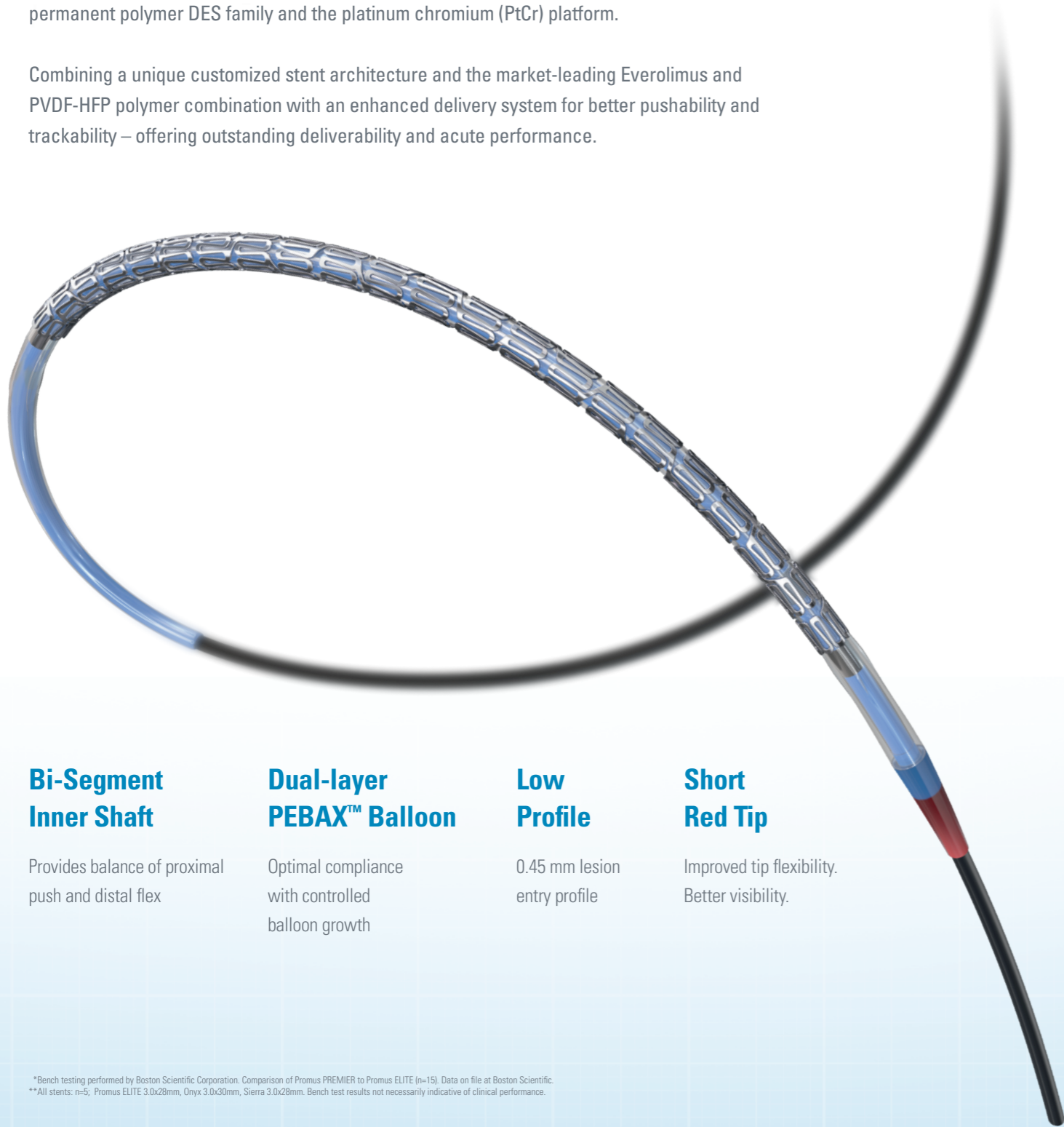


# Promus ELITE™

Everolimus-Eluting Platinum Chromium  
Coronary Stent System

The Promus ELITE Stent System builds upon the proven performance of the Promus permanent polymer DES family and the platinum chromium (PtCr) platform.

Combining a unique customized stent architecture and the market-leading Everolimus and PVDF-HFP polymer combination with an enhanced delivery system for better pushability and trackability – offering outstanding deliverability and acute performance.



### Bi-Segment Inner Shaft

Provides balance of proximal push and distal flex

### Dual-layer PEBAX™ Balloon

Optimal compliance with controlled balloon growth

### Low Profile

0.45 mm lesion entry profile

### Short Red Tip

Improved tip flexibility. Better visibility.

### Superior Conformability

Up to 8x more conformable\*

### Unmatched Radial Strength

Up to 23% higher radial strength\*

### Low Recoil

50% less recoil than competitive DES\*

### Best-in-Class Visibility

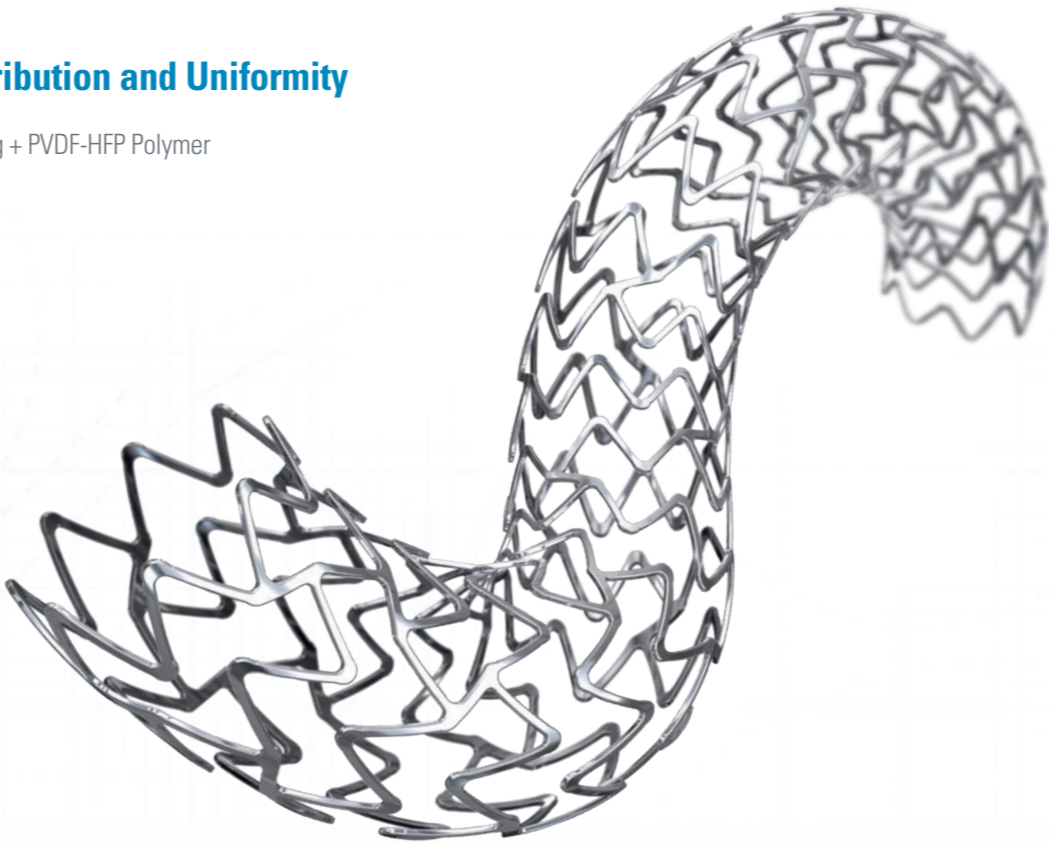
Unique PtCr stent platform

## Trusted Stent Platform

Customized stent architecture design offers the ideal balance of strength and flexibility

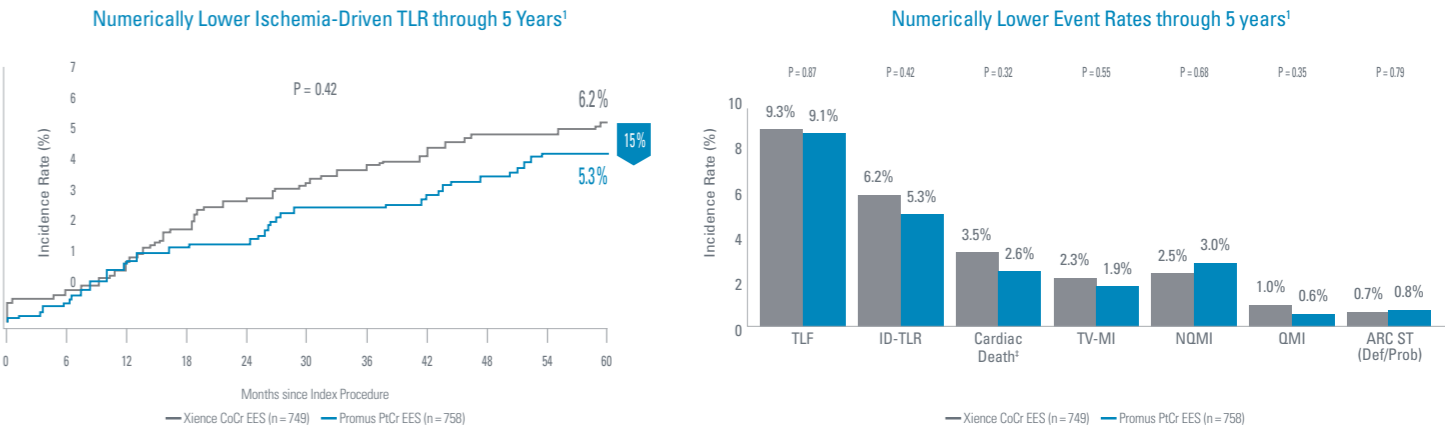
### Excellent Drug Distribution and Uniformity

Market-leading Everolimus drug + PVDF-HFP Polymer



## Proven Clinical Outcomes

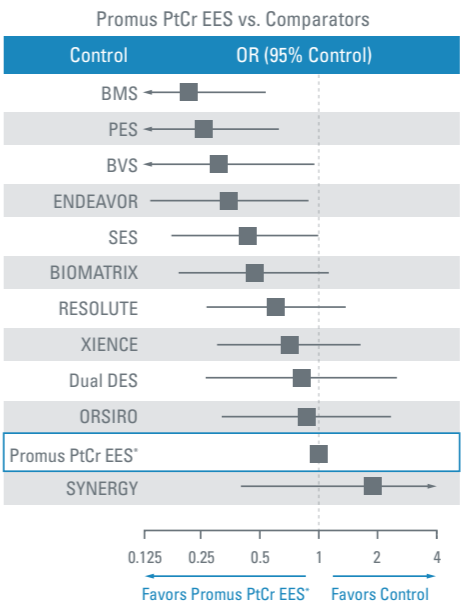
Proven clinical outcomes in 11 studies of almost 10,000 patients in the PLATINUM Family of trials



### Outstanding safety shown in real-world use

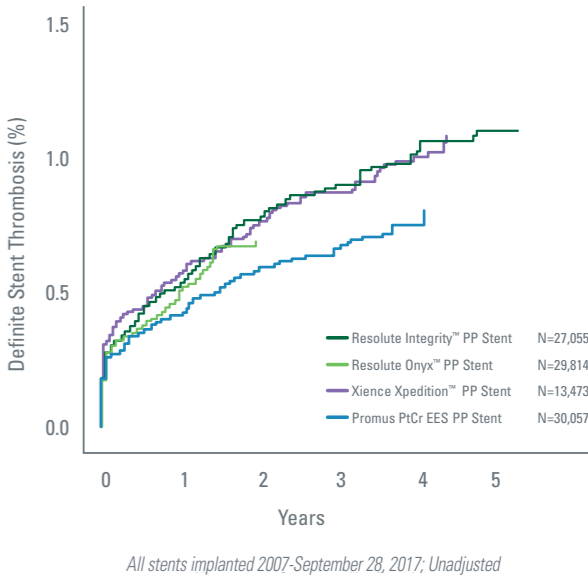
#### Kang Network Meta-Analysis<sup>2</sup>

Promus PtCr EES ranked #2 for the lowest relative risk of Def/Prob Stent Thrombosis



#### SCAAR Registry<sup>3</sup>

Promus PtCr EES reported numerically lowest Permanent Polymer ST rates in real-world SCAAR Registry



### More than 8 Million Promus PtCr DES implanted worldwide<sup>§</sup>

\*Bench testing performed by Boston Scientific Corporation. Comparison of Promus PREMIER to Promus ELITE (n=15). Data on file at Boston Scientific.  
\*\*All stents: n=5; Promus ELITE 3.0x28mm, Onyx 3.0x30mm, Sierra 3.0x28mm. Bench test results not necessarily indicative of clinical performance.

\*Bench tests performed by Boston Scientific Corporation. Data on file. All stents: n=5; Promus ELITE 3.0x28mm, Onyx 3.0x30mm, Sierra 3.0x28mm. Bench test results not necessarily indicative of clinical performance.

Caution should be taken in interpreting study results, as some stents had limited numbers of comparisons, and some of the studies had a potential risk of bias. \*All Promus PtCr-EES stents, also includes PROMUS Element, PROMUS Element Plus and Promus PREMIER. Def/prob ST was available in 110 studies with 111,088 patients. † Deaths due to unknown causes were adjudicated as cardiac death. § Implants based on Promus DES units sold through March 2018. Includes (Promus, Promus Element, Promus Element Plus, Promus PREMIER). 1. Stone, GW. PLATINUM Workhorse Trial. ACC 2015. PLATINUM Clinical Trial Program studied the PROMUS Element™ Stent (Promus PtCr EES) and the Xience V™ Stent (Xience CoCr EES).  
2. Kang, S et al. J Am Coll Cardiol Interv. doi:10.1016/j.jcin.2016.03.038 3. Adapted from Presentation by Stefan James, MD at TCT 2017 (Swedish SCAAR database, real-world outcomes of latest DES generations).