

Supra Phob  
Reġen



**PRECISION &  
ACCURACY**  
BROUGHT ALIVE TO COMPETE



## SUPRAPHOB REGEN

**Supraphob Regen** is a new generation diffractive-refractive multifocal intra-ocular lens designed to offer EXCELLENT VISION TO THE PATIENTS undergoing CATARACT SURGERY providing spectacle independence.

### MATERIAL & OPTIC DESIGN



- Supraphob Regen is made of premium quality biocompatible hydrophobic acrylic material
- Fabricated by nano resolution high technology machine with minimum polishing
- The non-touch preloaded system makes IOL implantation simple
- Regen is a diffractive-refractive combined multifocal technology
  - The central 4.2 mm diameter has 20 diffractive zones and remaining 1.8 mm (upto 6 mm) has refractive zones
  - The step height gradually declines towards the periphery
  - This distributes the light between the distant, intermediate and near focal points, resulting in a crystal clear visual quality at all distances

### CLEAR VISION AT ALL DISTANCES

- Good functional vision at all distances
- Excellent patient satisfaction
- Enjoy the crystal clear vision at all lighting conditions



**NEAR**

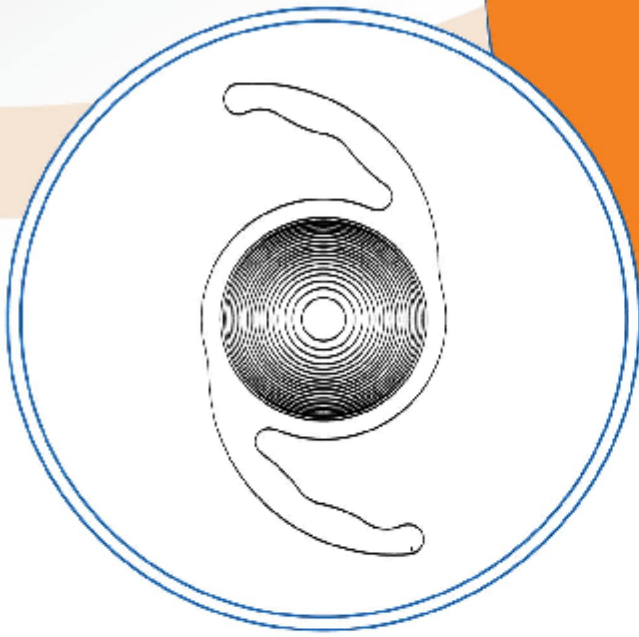


**INTERMEDIATE**



**DISTANT**

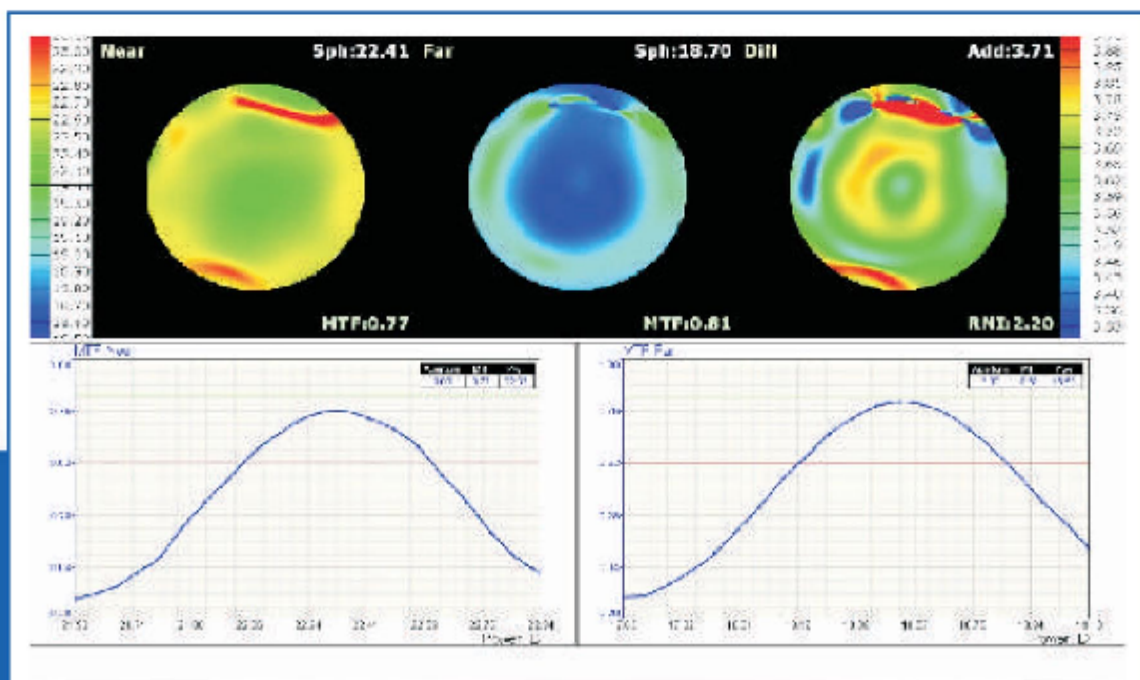
## ADD POWER



- Regen has +3.5D add power. It separates the near and distant images and makes them distinctive.
- With the years of experience in multifocal IOL design, the addition of +3.5D yields the patient, benefit of both near and distant vision at its best level.

## QUALITY & ACCURACY

- All lenses are tested for resolution with air force target immediately after lathing
- Each Regen is INDIVIDUALLY TESTED with Optical Bench System called IOLA-MFD for power, quality and MTF for near and far focal points
- Thanks to the advanced technology and material each Regen are assured of higher MTF values
- High MTF values ensure higher contrast at all distances in all light conditions





## NO TO PCO

- Each "Regen" is having 360° square edge posteriorly
- Thanks to the superior quality of the hydrophobic material the posterior capsule securely adheres to the rear surface of the lens
- The anterior placement of diffractive optics protects optical properties from YAG laser
- Together with the material and square edge optics Regen offers excellent barrier to PCO



## SPECIAL FEATURES

- The overall Haptic and Optic design offers excellent centration of IOL irrespective of the capsular bag size
- The negative Asphericity provided in Regen offers better visual quality than any other spherical IOL

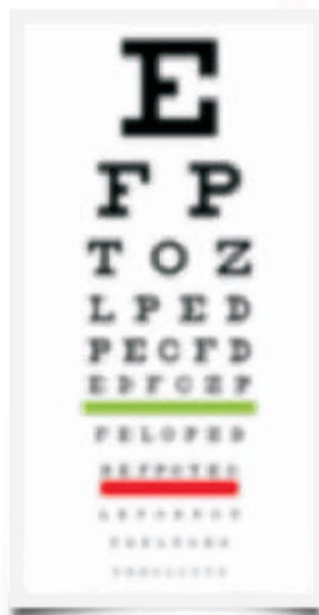


**SPHERICAL IOL**



**ASPHERIC OPTICS**

- The Regen IOL has ultraviolet filtering chromophores for the better protection of retina from UV light
- The state of art technology of Regen makes sure that its optical performance is equal to that of young natural crystalline lens
- The unique anterior diffractive design reduces the halos and yields superior vision



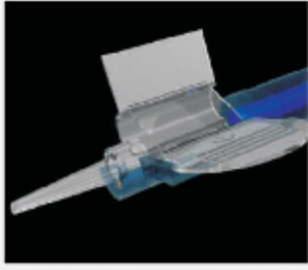
**OTHER IOL**



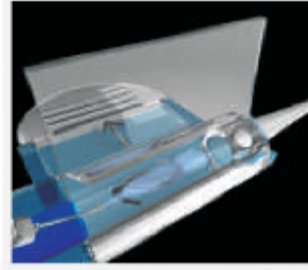
**SUPRA PHOB REGEN IOL**

## PRELOADED SYSTEM

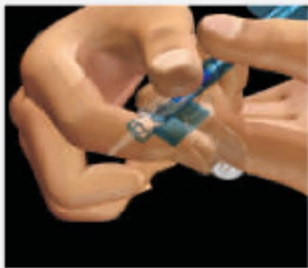
- The advanced preloaded system makes the IOL implanation simpler & safer.



**Step-1:** Please take the preloaded injector as shown



**Step-2:** Apply the viscoelastic as shown



**Step-3:** Close the cartridge, the IOL protecting cover will come out automatically



**Step-4:** Press the cartridge well until a "CLICK" sound is heard and ensure the cartridge is locked perfectly



**Step-5:** Apply the viscoelastic as shown in the picture



**Step-6:** Ready to inject



## TECHNICAL SPECIFICATION

Overall Length	13.00 mm
Optic Diameter	6.00 mm
Haptic Angulation	0°
Optic Design	Equi-biconvex, with diffractive anterior surface.
Diopter Range	7.00D TO 30.00D (0.5D increment)
Material	Yellow Hydrophobic Acrylic
Refractive Index	1.497
Delivery System	Ready to inject preloaded
Special Features	Aspheric Optics with 360° square edge

Manufactured by:

 **APPASAMY OCULAR DEVICES (P) LTD**

R.S. NO. 9/1, 2&3, N.H. 45-A, Villupuram Main Road,  
Vadamanagalam, Pondicherry - 605 102, INDIA