

# Bioshot

Disposable automatic guillotine needle  
for biopsy on soft tissues

Code: OBS



Safety catch



Lower releaser  
for automatic shot



Upper releaser  
for automatic shot



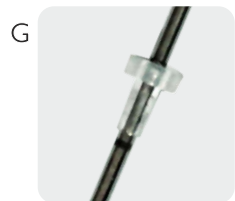
Cursor to  
charge the  
stylet



Cursor to  
charge the  
cannula



Choice between  
two different  
sampling depths



Sliding stopper  
Internal echo-marker  
Depth marks



CE  
0426

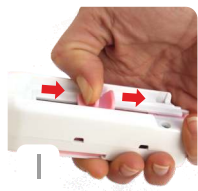
biomedical

# Bioshot

Code: OBS

Disposable automatic guillotine needle for biopsy on soft tissues

## Instruction of use



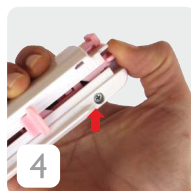
1  
Withdraw the cannula cursor until it stops (hooking click)  
Withdraw the stylet cursor until it stops (hooking click)



2  
When it is charged, both indicators are colored.



3  
Choose the sample's length to take by moving the proper selector on the longer or the shorter position.



4  
Put the safety catch on the LOAD position.



5  
Push the upper shooting button\*



6  
Or alternatively push the lower shooting button\*

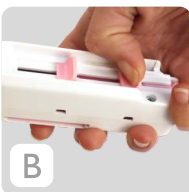


7  
To extract the needle: withdraw the cannula cursor until it stops (hooking click) in order to uncover the stylet for the frustule taking

(\*) The device can be used also as semi-automatic needle pushing the shooting button softly:



A  
The first press starts the stylet,

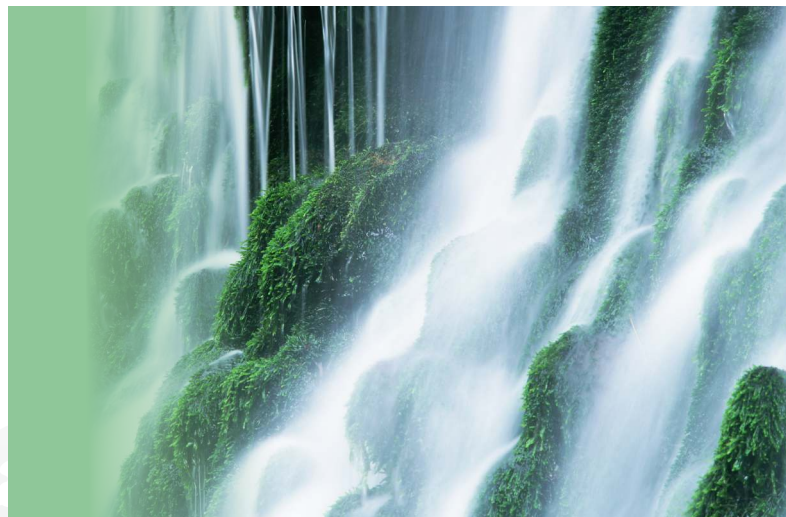


B  
The second one starts the cannula.

If the indicators are not colored the device is uncharged.

To order:

CODE	SIZE	PACKAGE	C. CODE
OBS 1410	14Gx10 cm	20	DARK GREEN
OBS 1415	14Gx15 cm	20	DARK GREEN
OBS 1420	14Gx20 cm	20	DARK GREEN
OBS 1610	16Gx10 cm	20	WHITE
OBS 1615	16Gx15 cm	20	WHITE
OBS 1620	16Gx20 cm	20	WHITE
OBS 1625	16Gx25 cm	20	WHITE
OBS 1810	18Gx10 cm	20	PINK
OBS 1815	18Gx15 cm	20	PINK
OBS 1820	18Gx20 cm	20	PINK
OBS 1825	18Gx25 cm	20	PINK



On request Biomedical is available to provide needles with different lengths and 20G diameter.

## biomedical

Biomedical srl Via G.B.Lulli, 43 50144 Firenze Italy  
Tel +39 055 352678 +39 055 332822 Fax +39 055 331629  
www.biomedical-bio.net sales@biomedical-bio.net

Bone biopsy needles

Guillotine needles for biopsy on soft tissues

Cyto-aspiration needles

Different specialistic needles and sets

Loco-regional anaesthesia needles and sets

Thermic and absorbing sheets



**CERTIFICATO 178-02-00-DM**  
**CERTIFICATE 178-02-00-DM**

**ITALCERT S.r.l.**

certifica che il  
*certifies that the*

Sistema di Garanzia della Qualità della Produzione  
messo in atto per la fabbricazione e l'ispezione finale di Dispositivi Medici  
*Production Quality Assurance System applied  
for the manufacture and final inspection of Medical Devices*

dal Fabbricante  
*by the Manufacturer*

**BIOMEDICAL S.r.l.**

Via G.B. Lulli, 43 - 50144 FIRENZE (FI) - ITALIA

nella sede operativa di  
*in the operational headquarter located in*

Via G.B. Lulli, 43 - 50144 FIRENZE (FI) - ITALIA


è conforme ai requisiti previsti dalla  
*complies with the requirements stated in*

**Direttiva 93/42/CEE – Allegato V**  
**Directive 93/42/EEC - Annex V**

ed autorizza lo stesso fabbricante ad apporre la marcatura  
*and authorizes the manufacturer to mark*



in accordo ai criteri previsti dall'All. XII della Direttiva 93/42/CEE  
sui dispositivi medici riportati nell'Allegato 1 del presente Certificato  
*in compliance with the criteria defined in Annex XII of the Directive 93/42/EEC  
the medical devices reported in Annex 1 of this Certificate*

  
**Dr. Ing. Roberto Cusolito**  
**AMMINISTRATORE DELEGATO**  
**MANAGING DIRECTOR**

Data di rilascio  
*First Issue Date*  
2011-11-03

Data di Rinnovo  
*Renewal Date*  
2021-05-24

Data di scadenza  
*Expire Date*  
2024-05-26

Il presente Certificato deve essere reso pubblico solo in forma integrale completo dell'Allegato I  
*This certificate must be published only in integral form and accompanied by its Annex 1*

**Allegato 1 al Certificato 178-02-00-DM**  
**Annex 1 to Certificate 178-02-00-DM**

Pagina 1 di 7  
Page 1 of 7

**Dispositivo medico invasivo di tipo chirurgico destinato ad uso temporaneo**  
**(Classe IIa)**  
**Surgically Invasive Medical Devices for Transient Use**  
**(Class IIa)**

Codici Codes	XX	YY(Y)	Z(ZZ)	αα	Descrizione Description	Descrizione In Inglese English description
OB <sup>l</sup> xyy/z-z-αα	da 14G a 18G	da 05 a 99 mm	da 005 a 300 mm		OB <sup>l</sup> = ago monouso per aspirazione iliaco-sternale	OB <sup>l</sup> = disposable needle for sternal or iliac aspiration
OBIP <sup>l</sup> xyy/z-z-αα	da 14G a 18G	da 05 a 99 mm	da 005 a 300 mm		OBIP <sup>l</sup> = ago monouso premontato per aspirazione iliaco-sternale	OBIP <sup>l</sup> = pre-assembled disposable needle for iliac or sternal aspiration
OBIE <sup>l</sup> xyy/z-z-αα	da 14G a 18G	da 05 a 99 mm	da 005 a 300 mm		OBIE <sup>l</sup> = ago midollare monouso per espianto e perfusione	OBIE <sup>l</sup> = medullar disposable needle for removal and perfusion
OBIL <sup>l</sup> xyy/z-z-αα	da 14G a 25G	da 05 a 99 mm	da 005 a 300 mm		OBIL <sup>l</sup> = ago monouso per aspirazione cresta iliaca con impugnatura ergonomica	OBIL <sup>l</sup> = disposable needle for iliac aspiration with ergonomic handle
OBILE <sup>l</sup> xyy/z-z-αα	da 14G a 25G	da 05 a 99 mm	da 005 a 300 mm		OBILE <sup>l</sup> = ago monouso per aspirazione cresta iliaca con impugnatura ergonomica per espianto midollare	OBILE <sup>l</sup> = disposable needle for iliac aspiration with ergonomic handle for medullar removal
OBL <sup>l</sup> xyy-αα	da 07G a 18G	da 05 a 25 cm	---		OBL <sup>l</sup> = ago monouso per biopsia osteo midollare	OBL <sup>l</sup> = disposable needle for bone-medullar biopsy
OBLE <sup>l</sup> xyy-αα	da 07G a 18G	da 05 a 25 cm	---		OBLE <sup>l</sup> = ago monouso per espianto midollare con fori laterali	OBLE <sup>l</sup> = disposable needle for medullar removal with lateral holes
OBW <sup>l</sup> xyy-αα	da 07G a 18G	da 05 a 25 cm	---		OBW <sup>l</sup> = ago monouso per biopsia osteo midollare (brevetto SOMATEX)	OBW <sup>l</sup> = disposable needle for bone-medullar biopsy (patent SOMATEX)
OBLT <sup>l</sup> xyy-αα	da 07G a 18G	da 05 a 25 cm	---		OBLT <sup>l</sup> = ago monouso per biopsia osteo midollare (tipo Trap System)	OBLT <sup>l</sup> = disposable needle for bone-medullar biopsy (Trap System-type)
OBLT <sup>l</sup> xyy-02	da 07G a 18G	da 05 a 25 cm	---	02 = punta a diamante	OBLT <sup>l</sup> -02 = ago monouso per biopsia osteo midollare (tipo Trap System)	OBLT <sup>l</sup> -02 = disposable needle for bone-medullar biopsy (Trap System-type, diamond shaped tip)
OBM <sup>l</sup> xyy-αα	da 11G a 22G	da 05 a 50 cm	---		OBM <sup>l</sup> = ago monouso a ghigliottina manuale per biopsia su tessuti molli	OBM <sup>l</sup> = disposable needle for soft tissue biopsy with manual action
OB <sup>l</sup> D <sup>l</sup> xyy-αα	da 14G a 22G	da 05 a 50 cm	---		OB <sup>l</sup> D <sup>l</sup> = ago monouso semiautomatico a ghigliottina per biopsia su tessuti molli	OB <sup>l</sup> D <sup>l</sup> = disposable needle for soft tissue biopsy with semiautomatic action
OBDS <sup>l</sup> xyy-αα	da 14G a 22G	da 05 a 50 cm	---		OBDS <sup>l</sup> = ago monouso semiautomatico a ghigliottina per biopsia su tessuti molli (impugnatura shuttle), senza cannula rimovibile	OBDS <sup>l</sup> = disposable guillotine needle for soft tissue biopsy with semiautomatic action (shuttle handle), without removable cannula
OB <sup>l</sup> DSE <sup>l</sup> xyy-αα	da 14G a 22G	da 05 a 50 cm	---		OB <sup>l</sup> DSE <sup>l</sup> = ago monouso semiautomatico a ghigliottina per biopsia su tessuti molli (impugnatura shuttle), senza cannula rimovibile, versione ecogena con PTFE	OB <sup>l</sup> DSE <sup>l</sup> = disposable guillotine needle for soft tissue biopsy with semiautomatic action (shuttle handle), without removable cannula, echogenic version (PTFE covered)
OB <sup>l</sup> DP <sup>l</sup> xyy-αα	da 14G a 22G	da 05 a 50 cm	---		OB <sup>l</sup> DP <sup>l</sup> = ago monouso a ghigliottina per biopsia coassiale	OB <sup>l</sup> DP <sup>l</sup> = disposable guillotine needle for coaxial biopsy
OB <sup>l</sup> DPS <sup>l</sup> xyy-αα	da 14G a 22G	da 05 a 50 cm	---		OB <sup>l</sup> DPS <sup>l</sup> = ago monouso semiautomatico a ghigliottina per biopsia coassiale su tessuti molli (impugnatura shuttle)	OB <sup>l</sup> DPS <sup>l</sup> = disposable guillotine needle for coaxial soft tissue biopsy with semiautomatic action (shuttle handle)
OB <sup>l</sup> E <sup>l</sup> xyy-αα	da 14G a 22G	da 05 a 50 cm	---		OB <sup>l</sup> E <sup>l</sup> = ago monouso a ghigliottina per pistola automatica	OB <sup>l</sup> E <sup>l</sup> = disposable guillotine needle for automatic gun
OB <sup>l</sup> E <sup>l</sup> E <sup>l</sup> xyy-αα	da 14G a 22G	da 05 a 50 cm	---		OB <sup>l</sup> E <sup>l</sup> E <sup>l</sup> = ago monouso a ghigliottina per pistola automatica con copertura in PTFE	OB <sup>l</sup> E <sup>l</sup> E <sup>l</sup> = disposable guillotine needle for automatic gun with PTFE covering

Il presente Certificato deve essere reso pubblico solo in forma integrale completo dell'Allegato I  
This certificate must be published only in integral form and accompanied by its Annex 1

*we*

## Allegato 1 al Certificato 178-02-00-DM Annex 1 to Certificate 178-02-00-DM

Pagina 2 di 7  
Page 2 of 7

Codici Codes	XX	YY(Y)	Z(ZZ)	αα	Descrizione Description	Descrizione in inglese English description
OBECxxyy-αα	da 14G a 22G	da 05 a 50 cm	---		OBEC = ago monouso a ghigliottina per pistola automatica con introduttore coassiale	OBEC = disposable guillotine needle for automatic gun with coaxial introducer
OBExxyy-01	da 14G a 22G	da 05 a 50 cm	---	01 = versione Promag 2.5	OBEx-01 = ago monouso a ghigliottina per pistola automatica versione Promag 2.5	OBEx-01 = disposable guillotine needle for automatic gun-Promag 2.5 version
OBECxxyy-01	da 14G a 22G	da 05 a 50 cm	---	01 = versione Promag 2.5	OBEC-01 = ago monouso a ghigliottina per pistola automatica Promag 2.5 con introduttore coassiale	OBEC-01 = disposable guillotine needle for automatic gun-Promag 2.5 version with coaxial introducer
OPGxxyy-αα	da 14G a 22G	da 05 a 50 cm	---		OPG = ago monouso a ghigliottina compatibile con pistola automatica Bard Magnum	OPG = disposable guillotine needle compatible with Bard Magnum automatic gun
OPGxxyy-01	da 14G a 22G	da 05 a 50 cm	---	01 = punta a diamante	OPG = ago monouso a ghigliottina compatibile con pistola automatica Bard Magnum, versione con punta a diamante	OPG = disposable guillotine needle compatible with Bard Magnum automatic gun, diamond shaped tip
OPGExxyy-αα	da 14G a 22G	da 05 a 50 cm	---		OPGE = ago monouso a ghigliottina compatibile con pistola automatica Bard Magnum, versione ecogena con PTFE	OPGE = disposable guillotine needle compatible with Bard Magnum automatic gun, echogenic version (PTFE covered)
OPGCxxyy-αα	da 14G a 22G	da 05 a 50 cm	---		OPGC = ago monouso a ghigliottina con introduttore coassiale compatibile con pistola automatica Bard Magnum	OPGC = disposable guillotine needle with coaxial introducer compatible with Bard Magnum automatic gun
OBSxxyy-αα	da 14G a 20G	da 10 a 25 cm	---		OBS = pistola monouso a scatto automatico per biopsia su tessuti molli (BIOSHOT)	OBS = automatic disposable gun for soft tissue biopsy (BIOSHOT)
OBSExxyy-αα	da 14G a 20G	da 10 a 25 cm	---		OBSE = pistola monouso a scatto automatico per biopsia su tessuti molli (BIOSHOT), versione ecogena con PTFE	OBSE = automatic disposable gun for soft tissue biopsy (BIOSHOT), echogenic version (PTFE covered)
OITxxyy-αα	da 11G a 23G	da 02 a 50 cm	---		OIT = ago monouso introduttore coassiale per introduzione di cannule, dispositivi per biopsia, fili repere, cateteri o altri dispositivi, con mandrino e cannula punta smussa	OIT = disposable introducer coaxial needle for introduction of cannula, biopsy devices, hook wires, catheters or other devices, without mandrel and smoothed tip cannula
OITExxyy-αα	da 11G a 23G	da 02 a 50 cm	---		OITE = ago monouso introduttore coassiale per introduzione di cannule, dispositivi per biopsia, fili repere, cateteri o altri dispositivi, con mandrino e cannula punta smussa, versione ecogena con PTFE	OITE = disposable introducer coaxial needle for introduction of cannula, biopsy devices, hook wires, catheters or other devices, without mandrel and smoothed tip cannula, echogenic version (PTFE covered)
OBTxxyy-αα	da 11G a 23G	da 02 a 50 cm	---		OBT = ago monouso introduttore coassiale per introduzione di cannule, dispositivi per biopsia, fili repere, cateteri o altri dispositivi, con mandrino trocar e cannula punta biptica	OBT = disposable introducer coaxial needle for introduction of cannula, biopsy devices, hook wires, catheters or other devices, with Trocar mandrel and biopsy tip cannula
ORFxxyyyβzzδ	Da 13 a 19G	Da 50 a 250 mm	---		ORF = ago introduttore di sonde per radiofrequenza ricoperto in PTFE	ORF = disposable introducer needle for radiofrequency probes, PTFE covered
OBAxxyy-αα	da 14G a 22G	da 05 a 35 cm	---		OBA = set monouso per biopsia epatica secondo Menghini	OBA = disposable set of hepatic biopsy by aspiration as for Menghini
OBCxxyy-αα	da 14G a 25G	da 05 a 30 cm	---		OBC = ago monouso per biopsie aspirate, istologiche, citologiche tipo Menghini modificato	OBC = disposable needle of histological and cytological biopsy by aspiration as for Menghini modified
OBCAxxyy-αα	da 14G a 25G	da 05 a 30 cm	---		OBCA = ago monouso automatico per biopsie aspirate, istologiche e citologiche (sistema Menghini modificato)	OBCA = automatic disposable needle of histological and cytological biopsy by aspiration as for Menghini modified
OBCACxxyy-αα	da 14G a 25G	da 05 a 30 cm	---		OBCAC = ago monouso automatico per biopsie aspirate, istologiche e citologiche (sistema Menghini modificato) con introduttore coassiale	OBCAC = automatic disposable needle of histological and cytological biopsy by aspiration as for Menghini modified with coaxial introducer

Il presente Certificato deve essere reso pubblico solo in forma integrale completo dell'Allegato I  
This certificate must be published only in integral form and accompanied by its Annex 1



## Allegato 1 al Certificato 178-02-00-DM Annex 1 to Certificate 178-02-00-DM

Pagina 3 di 7  
Page 3 of 7

Codici Codes	XX	YY(Y)	Z(ZZ)	αα	Descrizione Description	Descrizione in inglese English description
OMEM <sub>xyy</sub> -αα	da 16G a 26G	da 05 a 30 cm	---		OMEM = ago monouso di Chiba per aspirazione cito-istologica o introduzione, versione Menchetti	OMEM = Chiba disposable needle histological and cytological aspiration or insertion, Menchetti version
OMEF <sub>xyy</sub> -αα	da 16G a 26G	da 05 a 30 cm	---		OMEF = ago monouso di Franseen per biopsie cito-istologiche	OMEF = Disposable needle for cytological and histological biopsy, Franseen style
OMEW <sub>xyy</sub> -αα	da 16G a 26G	da 05 a 30 cm	---		OMEW = ago monouso di Wescott per biopsie cito-istologiche	OMEW = Wescott disposable needle for cytological and histological biopsy
OIC <sub>xyy</sub> -αα	da 18G a 23G	da 05 a 35 cm	---		OIC = ago monouso per alcolizzazione con punta chiusa e trocar	OIC = disposable needle for alcoholization with closed trocar point
OIL <sub>xyy</sub> -αα	da 18G a 23G	da 05 a 35 cm	---		OIL = ago monouso per alcolizzazione con punta aperta	OIL = open pointed disposable needle for alcoholization
OME <sub>xyy</sub> -αα	da 14G a 29G	da 05 a 30 cm	---		OME = ago monouso di Chiba per aspirati citologici	OME = Chiba disposable needle for cytological aspiration
OME <sub>xyy</sub> -01	da 14G a 29G	da 05 a 30 cm	---	01 = punta triplice affilatura	OME-01 = ago monouso per aspirati citologici punta triplice affilatura	OME-01 = Chiba disposable needle for cytological aspiration Triple sharpening tip
OME <sub>xyy</sub> -02	da 14G a 29G	da 05 a 30 cm	---	02 = punta Quincke	OME-02 = ago monouso per aspirati citologici punta Quincke	OME-02 = Chiba disposable needle for cytological aspiration Quincke tip
OME <sub>xyy</sub> -03	da 14G a 29G	da 05 a 30 cm	---	03 = punta Ultra	OME-03 = ago monouso per aspirati citologici punta Ultra	OME-03 = Chiba disposable needle for cytological aspiration Ultra tip
OME <sub>xyy</sub> -04	da 14G a 29G	da 05 a 30 cm	---	04 = punta triplice affilatura e tappo Quick Release	OME-04 = ago monouso per aspirati citologici punta Triplice affilatura con tappo Quick Release	OME-04 = Chiba disposable needle for cytological aspiration Triple sharpening tip and Quick Release plug
OME <sub>xyy</sub> -05	da 14G a 29G	da 05 a 30 cm	---	05 = punta Quincke e tappo Quick Release	OME-05 = ago monouso per aspirati citologici punta Quincke con tappo Quick Release	OME-05 = Chiba disposable needle for cytological aspiration Quincke tip and Quick Release plug
OME <sub>xyy</sub> -06	da 14G a 29G	da 05 a 30 cm	---	06 = punta Ultra e tappo Quick Release	OME-06 = ago monouso per aspirati citologici punta Ultra con tappo Quick Release	OME-06 = Chiba disposable needle for cytological aspiration with Ultra tip and Quick Release plug
OME <sub>xyy</sub> -07	da 14G a 29G	da 05 a 30 cm	---	07 = punta triplice affilatura, tappo Quick Release e prolunga	OME-07 = ago monouso per aspirati citologici punta Triplice affilatura con tappo Quick Release e prolunga	OME-07 = Chiba disposable needle for cytological aspiration Triple sharpening tip Quick Release plug and extension
OME <sub>xyy</sub> -08	da 14G a 29G	da 05 a 30 cm	---	08 = punta Quincke, tappo Quick Release e prolunga	OME-08 = ago monouso per aspirati citologici punta Quincke con tappo Quick Release e prolunga	OME-08 = Chiba disposable needle for cytological aspiration Quincke tip Quick Release plug and extension
OME <sub>xyy</sub> -09	da 14G a 29G	da 05 a 30 cm	---	09 = punta Ultra, tappo Quick Release e prolunga	OME-09 = ago monouso per aspirati citologici punta Ultra con tappo Quick Release e prolunga	OME-09 = Chiba disposable needle for cytological aspiration Ultra tip, Quick Release plug and extension
OME <sub>Pxyy</sub> -αα	da 16G a 26G	da 050 a 300 mm	---		OME <sub>P</sub> = ago monouso per blocco nervoso periferico sotto guida ecografica - senza mandrino - con tubo di raccordo	OME <sub>P</sub> = disposable needle with peripheral nerve block under echography - without mandrel - with connecting tube
OME <sub>Pxyy</sub> -01	da 16G a 26G	da 050 a 300 mm	---	01 = affilatura a 30°	OME <sub>P</sub> -01 = ago monouso per blocco nervoso periferico sotto guida ecografica - senza mandrino - con tubo di raccordo e affilatura a 30°	OME <sub>P</sub> -01 = disposable needle with peripheral nerve block under echography - without mandrel - with connecting tube (30° angle tip)
OME <sub>Cxyy</sub> -αα	da 16G a 26G	da 05 a 30 cm	---		OME <sub>C</sub> = ago monouso di Chiba per aspirati citologici, cannula ecogena e tubo	OME <sub>C</sub> = Chiba disposable needle for cytological aspiration, echogenic cannula and tube
OME <sub>Bxyy</sub> -αα	da 14G a 26G	da 05 a 30 cm	---		OME <sub>B</sub> = ago monouso da brachiterapia	OME <sub>B</sub> = disposable needle for brachytherapy

Il presente Certificato deve essere reso pubblico solo in forma integrale completo dell'Allegato I  
This certificate must be published only in integral form and accompanied by its Annex 1



## Allegato 1 al Certificato 178-02-00-DM

### Annex 1 to Certificate 178-02-00-DM

Pagina 4 di 7  
Page 4 of 7

Codici Codes	XX	YY(M)	Z(ZZ)	αα	Descrizione Description	Descrizione in inglese English description
OIDxx/Dyy-αα	da 18G a 30G	da 20 a 40 mm	---		OIDxx/D = set per galattografia con ago dritto per l'iniezione di liquido di contrasto nei dotti galattofori	OIDxx/D = set for galactography with straight needle
OIDxx/Cyy-αα	da 18G a 30G	da 20 a 40 mm	---		OIDxx/C = set per galattografia con ago curvo per l'iniezione di liquido di contrasto nei dotti galattofori	OIDxx/C = set for galactography with curved needle
OIDKxx/Cyy-αα	da 18G a 30G	da 20 a 40 mm	---		OIDKxx/C = kit per galattografia completo di ago curvo, 6 dilatatori e una siringa da 1 cc.	OIDKxx/C = set for galactography with curved needle, 6 dilators and 1 ml syringe
OIDKxx/Dyy-αα	da 18G a 30G	da 20 a 40 mm	---		OIDKxx/D = kit per galattografia completo di ago dritto, 6 dilatatori e una siringa da 1 cc.	OIDKxx/D = set for galactography with straight needle, 6 dilators and 1 ml syringe
OIMxxyy-αα	da 14G a 25G	da 05 a 35 cm	---		OIM = ago monouso per localizzazioni mammarie	OIM = disposable needle for mammary localization
OIMXxxyy-αα	da 14G a 25G	da 05 a 35 cm	---		OIMX = ago monouso per localizzazioni mammarie con uncino doppio	OIMX = disposable needle for mammary localization with double hook
OPNAxxyy-αα	da 14G a 25G	da 05 a 35 cm	---		OPNA = ago monouso per localizzazione mammaria non riposizionabile; impugnatura tipo BCA	OPNA = disposable needle for mammary localization, not repositionable; BCA-type handle
OPRxyy-αα	da 14G a 25G	da 05 a 35 cm	---		OPR = ago monouso per localizzazione mammaria riposizionabile; impugnatura tipo normale	OPR = disposable needle for mammary localization; normal handle
OAETxxyy-αα	da 18G a 30G	da 001 a 200 mm	---		OAET = ago monouso con punta triplice per elettrostimolazione ENS	OAET = disposable needle with triple tip for ENS electro stimulation
OAETxxyy-01	da 18G a 30G	da 001 a 200 mm	---	01 = affilatura a 30°	OAET-01 = ago monouso con punta triplice per elettrostimolazione ENS e affilatura a 30°	OAET-01 = disposable needle with triple tip for ENS electro stimulation (30° angle tip)
OAETxxyy-02	da 18G a 30G	da 001 a 200 mm	---	02 = affilatura a 45°	OAET-02 = ago monouso con punta triplice per elettrostimolazione ENS e affilatura a 45°	OAET-02 = disposable needle with triple tip for ENS electro stimulation (45° angle tip)
OAEQxxyy-αα	da 18G a 30G	da 001 a 200 mm	---		OAEQ = ago monouso con punta Quincke per elettrostimolazione ENS	OAEQ = disposable needle with Quincke tip for ENS electro stimulation
OAEQxxyy-01	da 18G a 30G	da 001 a 200 mm	---	01 = affilatura a 30°	OAEQ-01 = ago monouso con punta Quincke per elettrostimolazione ENS e affilatura a 30°	OAEQ-01 = disposable needle with Quincke tip for ENS electro stimulation (30° angle tip)
OAEQxxyy-02	da 18G a 30G	da 001 a 200 mm	---	02 = affilatura a 45°	OAEQ-02 = ago monouso con punta Quincke per elettrostimolazione ENS e affilatura a 45°	OAEQ-02 = disposable needle with Quincke tip for ENS electro stimulation (45° angle tip)
OAECxxyy-αα	da 18G a 30G	da 001 a 200 mm	---		OAEC = ago monouso con punta Chiba per elettrostimolazione ENS	OAEC = disposable needle with Chiba tip for ENS electro stimulation
OAECxxyy-01	da 18G a 30G	da 001 a 200 mm	---	01 = affilatura a 30°	OAEC-01 = ago monouso con punta Chiba per elettrostimolazione ENS e affilatura a 30°	OAEC-01 = disposable needle with Chiba tip for ENS electro stimulation (30° angle tip)
OAECxxyy-02	da 18G a 30G	da 001 a 200 mm	---	02 = affilatura a 45°	OAEC-02 = ago monouso con punta Chiba per elettrostimolazione ENS e affilatura a 45°	OAEC-02 = disposable needle with Chiba tip for ENS electro stimulation (45° angle tip)
OAEYxxyy-αα	da 18G a 30G	da 001 a 200 mm	---		OAEY = ago monouso con punta Thuoy per elettrostimolazione ENS	OAEY = disposable needle with Thuoy tip for ENS electro stimulation
OAEYxxyy-01	da 18G a 30G	da 001 a 200 mm	---	01 = affilatura a 30°	OAEY-01 = ago monouso con punta Thuoy per elettrostimolazione ENS e affilatura a 30°	OAEY-01 = disposable needle with Thuoy tip for ENS electro stimulation (30° angle tip)
OAEYxxyy-02	da 18G a 30G	da 001 a 200 mm	---	02 = affilatura a 45°	OAEY-02 = ago monouso con punta Thuoy per elettrostimolazione ENS e affilatura a 45°	OAEY-02 = disposable needle with Thuoy tip for ENS electro stimulation (45° angle tip)

Il presente Certificato deve essere reso pubblico solo in forma integrale completo dell'Allegato I  
This certificate must be published only in integral form and accompanied by its Annex 1

## Allegato 1 al Certificato 178-02-00-DM

### Annex 1 to Certificate 178-02-00-DM

Pagina 5 di 7  
Page 5 of 7

Codici Codes	XX	YY(M)	Z(ZZ)	αα	Descrizione Description	Descrizione in inglese English description
OAEPxyyy-αα	da 18G a 30G	da 001 a 200 mm	---		OAEP = ago monouso con punta pencil point e foro laterale per elettrostimolazione ENS	OAEP = disposable needle with Pencil point tip and lateral hole for ENS electro stimulation
OAEPxyyy-01	da 18G a 30G	da 001 a 200 mm	---	01 = affilatura a 30°	OAEP-01 = ago monouso con punta pencil point e foro laterale per elettrostimolazione ENS	OAEP-01 = disposable needle with Pencil point tip for ENS electro stimulation (30° angle tip)
OAEPxyyy-02	da 18G a 30G	da 001 a 200 mm	---	02 = affilatura a 45°	OAEP-02 = ago monouso con punta pencil per elettrostimolazione ENS e affilatura a 45°	OAEP-02 = disposable needle with Pencil point tip for ENS electro stimulation (45° angle tip)
OAV01xyyA	da 12G a 20G	da 05 a 25 cm	A = punta aperta		OAV01xyyA = set toracentesi/paracentesi con rubinetto e 1 ago Verres con mandrino a punta aperta	OAV01xyyA = set for thoracentesis/paracentesis with tap and Verres needle, with open tip mandrel
OAV01xyyB	da 12G a 20G	da 05 a 25 cm	B = 2 fori		OAV01xyyB = et toracentesi/paracentesi con rubinetto e 1 ago Verres con mandrino a 2 fori	OAV01xyyB = set for thoracentesis/paracentesis with tap and Verres needle, with two holes mandrel
OAV01xyyC	da 12G a 20G	da 05 a 25 cm	C = 3 cave		OAV01xyyC = set toracentesi/paracentesi con rubinetto e 1 ago Verres con mandrino con 3 cave	OAV01xyyC = set for thoracentesis/paracentesis with tap and Verres needle, with 3 pits mandrel
OAV0103yy	03	da 05 a 25 cm	---		OAV0103yy = set toracentesi/paracentesi con rubinetto e 3 aghi ipodermici (diversi G, stessa lunghezza)	OAV0103yy = set for thoracentesis/paracentesis with tap and 3 needles
OAV02xyyA	da 12G a 20G	da 05 a 25 cm	A = punta aperta		OAV02xyyA = set toracentesi/paracentesi con valvola unidirezionale e 1 ago Verres con mandrino a punta aperta	OAV02xyyA = set for thoracentesis/paracentesis with valve and Verres needle with open tip mandrel
OAV02xyyB	da 12G a 20G	da 05 a 25 cm	B = 2 fori		OAV02xyyB = set toracentesi/paracentesi con valvola unidirezionale e 1 ago Verres con mandrino a 2 fori	OAV02xyyB = set for thoracentesis/paracentesis with valve and Verres needle, with 2 holes mandrel
OAV02xyyC	da 12G a 20G	da 05 a 25 cm	C = 3 cave		OAV02xyyC = set toracentesi/paracentesi con valvola unidirezionale e 1 ago Verres con mandrino con 3 cave	OAV02xyyC = set for thoracentesis/paracentesis with valve and Verres needle, with 3 pits mandrel
OAV0203yy	03	da 05 a 25 cm	---		OAV0203yy = set toracentesi/paracentesi con valvola unidirezionale e 3 aghi ipodermici (diversi G, stessa lunghezza)	OAV0203yy = set for thoracentesis/paracentesis with valve and 3 needles
OAV03xyyy	da 08 a 21G	da 030 a 300 mm	---		OAV03xyyy = set toracentesi/paracentesi per prelievo di ascite con ago per drenaggio	OAV03xyyy = set for thoracentesis/paracentesis for removal of ascites and drainage needle
OAV0102	---	---	---		OAV0102 = set per drenaggio con 2 aghi imbutino, rubinetto e tubo 4,1 x 3 mm.	OAV0102 = set for drainage with 2 funnel needles, tap and tube 4.1 x 3 mm
OAVAxxyy	da 12G a 20G	da 05 a 25 cm	A = punta aperta		OAVAxxyy = ago Verres con raccordo slim normale, punta aperta, affilatura a 16° senza rubinetto	OAVAxxyy = Verres needle with normal slim joint, open point, 16° sharpen, without tap
OAVBxyy	da 12G a 20G	da 05 a 25 cm	B = 2 fori		OAVBxyy = ago Verres con raccordo slim normale, 2 fori, affilatura a 16° senza rubinetto	OAVBxyy = Verres needle with normal slim joint, 2 holes, 16° sharpen, without tap
OAVCxyy	da 12G a 20G	da 05 a 25 cm	C = 3 cave		OAVCxyy = ago Verres con raccordo slim normale, 3 cave, affilatura a 16° senza rubinetto	OAVCxyy = Verres needle with normal slim joint, 3 pits, 16° sharpen, without tap
OAVDxyy	da 12G a 20G	da 05 a 25 cm	D = 1 foro		OAVDxyy = ago Verres con raccordo slim normale, 1 foro, affilatura a 16° senza rubinetto	OAVDxyy = Verres needle with normal slim joint, 1 hole, 16° sharpen, without tap
OAVAQxyy	da 12G a 20G	da 05 a 25 cm	AQ = punta aperta, affilatura a 30° e rubinetto		OAVAQxyy = Ago Verres con raccordo slim normale, punta aperta, affilatura a 30° e rubinetto	OAVAQxyy = Verres needle with normal slim joint, open tip, 30° sharpen, and tap

Il presente Certificato deve essere reso pubblico solo in forma integrale completo dell'Allegato I  
This certificate must be published only in integral form and accompanied by its Annex 1

*we*



## Allegato 1 al Certificato 178-02-00-DM Annex 1 to Certificate 178-02-00-DM

Pagina 6 di 7  
Page 6 of 7

Codici Codes	XX	YY(M)	Z(ZZ)	αα	Descrizione Description	Descrizione in inglese English description
OAVBQ <sub>xyy</sub>	da 12G a 20G	da 05 a 25 cm	BQ = 2 fori, affilatura a 30° e rubinetto		OAVBQ <sub>xyy</sub> = ago Verres con raccordo slim normale, 2 fori, affilatura a 30° e rubinetto	OAVBQ <sub>xyy</sub> = Verres needle with normal slim joint, 2 holes, 30° sharpen, and tap
OAVCQ <sub>xyy</sub>	da 12G a 20G	da 05 a 25 cm	CQ = 3 cave, affilatura a 30° e rubinetto		OAVCQ <sub>xyy</sub> = ago Verres con raccordo slim normale, 3 cave, affilatura a 30° e rubinetto	OAVCQ <sub>xyy</sub> = Verres needle with normal slim joint, 3 pits, 30° sharpen, and tap
OAVDQ <sub>xyy</sub>	da 12G a 20G	da 05 a 25 cm	DQ = 1 foro, affilatura a 30° e rubinetto		OAVDQ <sub>xyy</sub> = ago Verres con raccordo slim normale, 1 foro, affilatura a 30° e rubinetto	OAVDQ <sub>xyy</sub> = Verres needle with normal slim joint, 1 hole, 30° sharpen and tap
OAVA <sub>xyy</sub> -02	da 12G a 20G	da 05 a 25 cm	A = punta aperta	02 = copertura PTFE	OAVA <sub>xyy</sub> -02 = ago Verres con raccordo slim normale, punta aperta, affilatura a 16° senza rubinetto e copertura PTFE	OAVA <sub>xyy</sub> -02 = Verres needle with normal slim joint, open tip, 16° sharpen without tap and PTFE cover
OAVB <sub>xyy</sub> -02	da 12G a 20G	da 05 a 25 cm	B = 2 fori	02 = copertura PTFE	OAVB <sub>xyy</sub> -02 = ago Verres con raccordo slim normale, 2 fori, affilatura a 16° senza rubinetto e copertura PTFE	OAVB <sub>xyy</sub> -02 = Verres needle with normal slim joint, 2 holes, 16° sharpen without tap and PTFE cover
OAVC <sub>xyy</sub> -02	da 12G a 20G	da 05 a 25 cm	C = 3 cave	02 = copertura PTFE	OAVC <sub>xyy</sub> -02 = ago Verres con raccordo slim normale, 3 cave, affilatura a 16° senza rubinetto e copertura PTFE	OAVC <sub>xyy</sub> -02 = Verres needle with normal slim joint, 3 pits, 16° sharpen without tap and PTFE cover
OAVD <sub>xyy</sub> -02	da 12G a 20G	da 05 a 25 cm	D = 1 foro	02 = copertura PTFE	OAVD <sub>xyy</sub> -02 = ago Verres con raccordo slim normale, 1 foro, affilatura a 16° senza rubinetto e copertura PTFE	OAVD <sub>xyy</sub> -02 = Verres needle with normal slim joint, 1 hole, 16° sharpen without tap and PTFE cover
OAVAQ <sub>xyy</sub> -02	da 12G a 20G	da 05 a 25 cm	AQ = punta aperta, affilatura a 30° e rubinetto	02 = copertura PTFE	OAVAQ <sub>xyy</sub> -02 = Ago Verres con raccordo slim normale, punta aperta, affilatura a 30°, rubinetto e copertura PTFE	OAVAQ <sub>xyy</sub> -02 = Verres needle with normal slim joint, open tip, 30° sharpen, tap and PTFE cover
OAVBQ <sub>xyy</sub> -02	da 12G a 20G	da 05 a 25 cm	BQ = 2 fori, affilatura a 30° e rubinetto	02 = copertura PTFE	OAVBQ <sub>xyy</sub> -02 = ago Verres con raccordo slim normale, 2 fori, affilatura a 30°, rubinetto e copertura PTFE	OAVBQ <sub>xyy</sub> -02 = Verres needle with normal slim joint, 2 holes, 30° sharpen, tap and PTFE cover
OAVCQ <sub>xyy</sub> -02	da 12G a 20G	da 05 a 25 cm	CQ = 3 cave, affilatura a 30° e rubinetto	02 = copertura PTFE	OAVCQ <sub>xyy</sub> -02 = ago Verres con raccordo slim normale, 3 cave, affilatura a 30°, rubinetto e copertura PTFE	OAVCQ <sub>xyy</sub> -02 = Verres needle with normal slim joint, 3 pits, 30° sharpen, tap and PTFE cover
OAVDQ <sub>xyy</sub> -02	da 12G a 20G	da 05 a 25 cm	DQ = 1 foro, affilatura a 30° e rubinetto	02 = copertura PTFE	OAVDQ <sub>xyy</sub> -02 = ago Verres con raccordo slim normale, 1 foro, affilatura a 30°, rubinetto e copertura PTFE	OAVDQ <sub>xyy</sub> -02 = Verres needle with normal slim joint, 1 hole, 30° sharpen, tap and PTFE cover
OAVA <sub>xyy</sub> -01	da 12G a 20G	da 05 a 25 cm	A = punta aperta	01 = raccordo slim corto	OAVA <sub>xyy</sub> -01 = ago Verres con raccordo slim corto, punta aperta, affilatura a 16° senza rubinetto	OAVA <sub>xyy</sub> -01 = Verres needle with normal slim joint, open tip, 16° sharpen, without tap
OAVB <sub>xyy</sub> -01	da 12G a 20G	da 05 a 25 cm	B = 2 fori	01 = raccordo slim corto	OAVB <sub>xyy</sub> -01 = ago Verres con raccordo slim corto, 2 fori, affilatura a 16° senza rubinetto	OAVB <sub>xyy</sub> -01 = Verres needle with normal slim joint, 2 holes, 16° sharpen without tap
OAVC <sub>xyy</sub> -01	da 12G a 20G	da 05 a 25 cm	C = 3 cave	01 = raccordo slim corto	OAVC <sub>xyy</sub> -01 = ago Verres con raccordo slim corto, 3 cave, affilatura a 16° senza rubinetto	OAVC <sub>xyy</sub> -01 = Verres needle with normal slim joint, 3 pits, 16° sharpen without tap
OAVD <sub>xyy</sub> -01	da 12G a 20G	da 05 a 25 cm	D = 1 foro	01 = raccordo slim corto	OAVD <sub>xyy</sub> -01 = ago Verres con raccordo slim corto, 1 foro, affilatura a 16° senza rubinetto	OAVD <sub>xyy</sub> -01 = Verres needle with normal slim joint, 1 hole, 16° sharpen without tap
OAVAQ <sub>xyy</sub> -01	da 12G a 20G	da 05 a 25 cm	AQ = punta aperta, affilatura a 30° e rubinetto	01 = raccordo slim corto	OAVAQ <sub>xyy</sub> -01 = ago Verres con raccordo slim corto, punta aperta, affilatura a 30° e rubinetto	OAVAQ <sub>xyy</sub> -01 = Verres needle with normal slim joint, open tip, 30° sharpen and tap
OAVBQ <sub>xyy</sub> -01	da 12G a 20G	da 05 a 25 cm	BQ = 2 fori, affilatura a 30° e rubinetto	01 = raccordo slim corto	OAVBQ <sub>xyy</sub> -01 = ago Verres con raccordo slim corto, 2 fori, affilatura a 30° e rubinetto	OAVBQ <sub>xyy</sub> -01 = Verres needle with normal slim joint, open tip, 30° sharpen, tap and PTFE cover
OAVCQ <sub>xyy</sub> -01	da 12G a 20G	da 05 a 25 cm	CQ = 3 cave, affilatura a 30° e rubinetto	01 = raccordo slim corto	OAVCQ <sub>xyy</sub> -01 = ago Verres con raccordo slim corto, 3 cave, affilatura a 30° e rubinetto	OAVCQ <sub>xyy</sub> -01 = Verres needle with normal slim joint, 3 pits, 30° sharpen and tap
OAVDQ <sub>xyy</sub> -01	da 12G a 20G	da 05 a 25 cm	DQ = 1 foro, affilatura a 30° e rubinetto	01 = raccordo slim corto	OAVDQ <sub>xyy</sub> -01 = ago Verres con raccordo slim corto, 1 foro, affilatura a 30° e rubinetto	OAVDQ <sub>xyy</sub> -01 = Verres needle with normal slim joint, 1 hole, 30° sharpen and tap

Il presente Certificato deve essere reso pubblico solo in forma integrale completo dell'Allegato I  
This certificate must be published only in integral form and accompanied by its Annex I



**Allegato 1 al Certificato 178-02-00-DM**  
**Annex 1 to Certificate 178-02-00-DM**

Pagina 7 di 7  
Page 7 of 7

Codici Codes	XX	YY(M)	Z(ZZ)	αα	Descrizione Description	Descrizione in inglese English description
OAVAxxyy-03	da 12G a 20G	da 05 a 25 cm	A = punta aperta	03 = raccordo slim corto e copertura PTFE	OAVAxxyy-03 = Ago Verres con raccordo slim corto, punta aperta, affilatura a 16° senza rubinetto e copertura PTFE	OAVAxxyy-03 = Verres needle with normal slim joint, open tip, 16° sharpen without tap and PTFE cover
OAVBxxyy-03	da 12G a 20G	da 05 a 25 cm	B = 2 fori	03 = raccordo slim corto e copertura PTFE	OAVBxxyy-03 = ago Verres con raccordo slim corto, 2 fori, affilatura a 16° senza rubinetto e copertura PTFE	OAVBxxyy-03 = Verres needle with normal slim joint, 2 holes, 16° sharpen without tap and PTFE cover
OAVCxxyy-03	da 12G a 20G	da 05 a 25 cm	C = 3 cave	03 = raccordo slim corto e copertura PTFE	OAVCxxyy-03 = ago Verres con raccordo slim corto, 3 cave, affilatura a 16° senza rubinetto e copertura PTFE	OAVCxxyy-03 = Verres needle with normal slim joint, 3 pits, 16° sharpen without tap and PTFE cover
OAVDxxyy-03	da 12G a 20G	da 05 a 25 cm	D = 1 foro	03 = raccordo slim corto e copertura PTFE	OAVDxxyy-03 = ago Verres con raccordo slim corto, 1 foro, affilatura a 16° senza rubinetto e copertura PTFE	OAVDxxyy-03 = Verres needle with normal slim joint, 1 hole, 16° sharpen without tap and PTFE cover
OAVAQxxyy-03	da 12G a 20G	da 05 a 25 cm	AQ = punta aperta, affilatura a 30° e rubinetto	03 = raccordo slim corto e copertura PTFE	OAVAQxxyy-03 = ago Verres con raccordo slim corto, punta aperta, affilatura a 30° con rubinetto e copertura PTFE	OAVAQxxyy-03 = Verres needle with normal slim joint, open tip, 30° sharpen without tap and PTFE cover
OAVBQxxyy-03	da 12G a 20G	da 05 a 25 cm	BQ = 2 fori, affilatura a 30° e rubinetto	03 = raccordo slim corto e copertura PTFE	OAVBQxxyy-03 = ago Verres con raccordo slim corto, 2 fori, affilatura a 30° con rubinetto e copertura PTFE	OAVBQxxyy-03 = Verres needle with normal slim joint, 2 holes, 30° sharpen without tap and PTFE cover
OAVCQxxyy-03	da 12G a 20G	da 05 a 25 cm	CQ = 3 cave, affilatura a 30° e rubinetto	03 = raccordo slim corto e copertura PTFE	OAVCQxxyy-03 = ago Verres con raccordo slim corto, 3 cave, affilatura a 30° con rubinetto e copertura PTFE	OAVCQxxyy-03 = Verres needle with normal slim joint, 3 pits, 30° sharpen without tap and PTFE cover
OAVDQxxyy-03	da 12G a 20G	da 05 a 25 cm	DQ = 1 foro, affilatura a 30° e rubinetto	03 = raccordo slim corto e copertura PTFE	OAVDQxxyy-03 = ago Verres con raccordo slim corto, 1 foro, affilatura a 30° con rubinetto e copertura PTFE	OAVDQxxyy-03 = Verres needle with short slim joint, 1 hole, 30° sharpen without tap and PTFE cover

Milano, 2021-05-24

  
**Dr. Ing. Roberto Cusolito**  
**AMMINISTRATORE DELEGATO**  
**MANAGING DIRECTOR**

Il presente Certificato deve essere reso pubblico solo in forma integrale completo dell'Allegato I  
*This certificate must be published only in integral form and accompanied by its Annex 1*

## Conformity declaration

The undersigned company BIOMEDICAL S.r.l., declares, on its own responsibility, that the following disposable sterile medical devices produced and supplied by the company itself:

- are in accordance with the essential requirements of Annex I of the European Directive 93/42/EEC and subsequent amendments and additions.
- are classified as surgical invasive medical device for transient use (class IIa) in accordance to the rule 6 , annex IX of Directive 93/42/EEC and subsequent amendments and additions.
- are manufactured in strict accordance with Italian sanitary laws and with European Directive 93/42/EEC and subsequent amendments and additions - Annex V and Annex VII, UNI EN ISO 9001:2015, UNI ISO 13485:2016, using medical/pharmaceutical grade materials.

This conformity declaration is related to the certificate number 178-02-00-DM, issued by the N.B. 0426 ITALCERT, and to the codes listed below.

Firenze, 28/04/2022

BIOMEDICAL S.r.l.  
Legal representative

Paola Giunti  
*Paola Giunti*

**biomedical** srl

CODE	RANGE XX	RANGE YY(Y)	RANGE Z(ZZ)	αα	DESCRIPTION
0Blxxyy/zzz-αα	da 14G a 18G	da 05 a 99 mm	da 005 a 300 mm		0BI = disposable needle for sternal or iliac aspiration
0BIPxxyy/zzz-αα	da 14G a 18G	da 05 a 99 mm	da 005 a 300 mm		0BIP = pre-assembled disposable needle for iliac or sternal aspiration
0BIExxyy/zzz-αα	da 14G a 18G	da 05 a 99 mm	da 005 a 300 mm		0BIE = medullar disposable needle for removal and perfusion
0BILxxyy/zzz-αα	da 14G a 25G	da 05 a 99 mm	da 005 a 300 mm		0BIL = disposable needle for iliac aspiration with ergonomic handle
0BILExxyy/zzz-αα	da 14G a 25G	da 05 a 99 mm	da 005 a 300 mm		0BILE = disposable needle for iliac aspiration with ergonomic handle for medullar removal
0BLxxyy-αα	da 07G a 18G	da 05 a 25 cm	---		0BL = disposable needle for bone-medullar biopsy
0BLExxyy-αα	da 07G a 18G	da 05 a 25 cm	---		0BLE = disposable needle for medullar removal with lateral holes
0BWxxyy-αα	da 07G a 18G	da 05 a 25 cm	---		0BW = disposable needle for bone-medullar biopsy (patent SOMATEX)
0BLTxxyy-αα	da 07G a 18G	da 05 a 25 cm	---		0BLT = disposable needle for bone-medullar biopsy (Trap System-type)
0BLTxxyy-02	da 07G a 18G	da 05 a 25 cm	---	02 = punta a diamante	0BLT-02 = disposable needle for bone-medullar biopsy (Trap System-type, diamond shaped tip)
0BMxxyy-αα	da 11G a 22G	da 05 a 50 cm	---		0BM = disposable needle for soft tissue biopsy with manual action

CODE	RANGE XX	RANGE YY(Y)	RANGE Z(ZZ)	αα	DESCRIPTION
0BDxxyy-αα	da 14G a 22G	da 05 a 50 cm	---		0BD = disposable needle for soft tissue biopsy with semiautomatic action
0BDSxxyy-αα	da 14G a 22G	da 05 a 50 cm	---		0BDS = disposable guillotine needle for soft tissue biopsy with semiautomatic action (shuttle handle), without removable cannula
0BDSExxyy-αα	da 14G a 22G	da 05 a 50 cm	---		0BDSE = disposable guillotine needle for soft tissue biopsy with semiautomatic action (shuttle handle), without removable cannula, echogenic version (PTFE covered)
0BDPxxyy-αα	da 14G a 22G	da 05 a 50 cm	---		0BDP = disposable guillotine needle for coaxial biopsy
0BDPSxxyy-αα	da 14G a 22G	da 05 a 50 cm	---		0BDPS = disposable guillotine needle for coaxial soft tissue biopsy with semiautomatic action (shuttle handle)
0BExxyy-αα	da 14G a 22G	da 05 a 50 cm	---		0BE = disposable guillotine needle for automatic gun
0BEExxyy-αα	da 14G a 22G	da 05 a 50 cm	---		0BEE = disposable guillotine needle for automatic gun with PTFE covering
0BECxxyy-αα	da 14G a 22G	da 05 a 50 cm	---		0BEC = disposable guillotine needle for automatic gun with coaxial introducer
0BExxyy-01	da 14G a 22G	da 05 a 50 cm	---	01 = versione Promag 2.5	0BE-01 = disposable guillotine needle for automatic gun- Promag 2.5 version
0BECxxyy-01	da 14G a 22G	da 05 a 50 cm	---	01 = versione Promag 2.5	0BEC-01 = disposable guillotine needle for automatic gun- Promag 2.5 version with coaxial introducer
0PGxxyy-αα	da 14G a 22G	da 05 a 50 cm	---		0PG = disposable guillotine needle compatible with Bard Magnum automatic gun
0PGxxyy-01	da 14G a 22G	da 05 a 50 cm	---	01 = punta a diamante	0PG = disposable guillotine needle compatible with Bard Magnum automatic gun, diamond shaped tip
0PGExxyy-αα	da 14G a 22G	da 05 a 50 cm	---		0PGE = disposable guillotine needle compatible with Bard Magnum automatic gun, echogenic version (PTFE covered)

CODE	RANGE XX	RANGE YY(Y)	RANGE Z(ZZ)	αα	DESCRIPTION
0PGCxxyy-αα	da 14G a 22G	da 05 a 50 cm	---		0PGC = disposable guillotine needle with coaxial introducer compatible with Bard Magnum automatic gun
0BSxxyy-αα	da 14G a 20G	da 10 a 25 cm	---		0BS = automatic disposable gun for soft tissue biopsy (BIOSHOT)
0BSExxyy-αα	da 14G a 20G	da 10 a 25 cm	---		0BSE = automatic disposable gun for soft tissue biopsy (BIOSHOT), echogenic version (PTFE covered)
0ITxxyy-αα	da 11G a 23G	da 02 a 50 cm	---		0IT = disposable introducer coaxial needle for introduction of cannula, biopsy devices, hook wires, catheters or other devices, without mandrel and smoothed tip cannula
0ITExxyy-αα	da 11G a 23G	da 02 a 50 cm	---		0ITE = disposable introducer coaxial needle for introduction of cannula, biopsy devices, hook wires, catheters or other devices, without mandrel and smoothed tip cannula, echogenic version (PTFE covered)
0BTxxyy-αα	da 11G a 23G	da 02 a 50 cm	---		0BT = disposable introducer coaxial needle for introduction of cannula, biopsy devices, hook wires, catheters or other devices, with Trocar mandrel and biopsy tip cannula
0RFxxyyyβzzδ	Da 13 a 19G	Da 50 a 250 mm	---		0RF = disposable introducer needle for radiofrequency probes, PTFE covered
0BAxxyy-αα	da 14G a 22G	da 05 a 35 cm	---		0BA = disposable set of hepatic biopsy by aspiration as for Menghini
0BCxxyy-αα	da 14G a 25G	da 05 a 30 cm	---		0BC = disposable needle of histological and cytological biopsy by aspiration as for Menghini modified
0BCAxxyy-αα	da 14G a 25G	da 05 a 30 cm	---		0BCA = automatic disposable needle of histological and cytological biopsy by aspiration as for Menghini modified
0BCACxxyy-αα	da 14G a 25G	da 05 a 30 cm	---		0BCAC = automatic disposable needle of histological and cytological biopsy by aspiration as for Menghini modified with coaxial introducer

CODE	RANGE XX	RANGE YY(Y)	RANGE Z(ZZ)	αα	DESCRIPTION
OMEMxxyy-αα	da 16G a 26G	da 05 a 30 cm	---		OMEM = Chiba disposable needle histological and cytological aspiration or insertion, Menchetti version
OMEFxxyy-αα	da 16G a 26G	da 05 a 30 cm	---		OMEF = Disposable needle for cytological and histological biopsy, Franseen style
OMEWxxyy-αα	da 16G a 26G	da 05 a 30 cm	---		OMEW = Wescott disposable needle for cytological and histological biopsy
OICxxyy-αα	da 18G a 23G	da 05 a 35 cm	---		OIC = disposable needle for alcoholization with closed trocar point
OILxxyy-αα	da 18G a 23G	da 05 a 35 cm	---		OIL = open pointed disposable needle for alcoholization
OMExxxyy-αα	da 14G a 29G	da 05 a 30 cm	---		OME = Chiba disposable needle for cytological aspiration
OMExxxyy-01	da 14G a 29G	da 05 a 30 cm	---	01 = punta triplice affilatura	OME-01 = Chiba disposable needle for cytological aspiration Triple sharpening tip
OMExxxyy-02	da 14G a 29G	da 05 a 30 cm	---	02 = punta Quincke	OME-02 = Chiba disposable needle for cytological aspiration Quincke tip
OMExxxyy-03	da 14G a 29G	da 05 a 30 cm	---	03 = punta Ultra	OME-03 = Chiba disposable needle for cytological aspiration Ultra tip
OMExxxyy-04	da 14G a 29G	da 05 a 30 cm	---	04 = punta triplice affilatura e tappo Quick Release	OME-04 = Chiba disposable needle for cytological aspiration Triple sharpening tip and Quick Release plug
OMExxxyy-05	da 14G a 29G	da 05 a 30 cm	---	05 = punta Quincke e tappo Quick Release	OME-05 = Chiba disposable needle for cytological aspiration Quincke tip and Quick Release plug
OMExxxyy-06	da 14G a 29G	da 05 a 30 cm	---	06 = punta Ultra e tappo Quick Release	OME-06 = Chiba disposable needle for cytological aspiration with Ultra tip and Quick Release plug

CODE	RANGE XX	RANGE YY(Y)	RANGE Z(ZZ)	αα	DESCRIPTION
OMExxyy-07	da 14G a 29G	da 05 a 30 cm	---	07 = punta triplice affilatura, tappo Quick Release e prolunga	OME-07 = Chiba disposable needle for cytological aspiration Triple sharpening tip Quick Release plug and extension
OMExxyy-08	da 14G a 29G	da 05 a 30 cm	---	08 = punta Quincke, tappo Quick Release e prolunga	OME-08 = Chiba disposable needle for cytological aspiration Quincke tip Quick Release plug and extension
OMExxyy-09	da 14G a 29G	da 05 a 30 cm	---	09 = punta Ultra, tappo Quick Release e prolunga	OME-09 = Chiba disposable needle for cytological aspiration Ultra tip, Quick Release plug and extension
OMEpxxyy-αα	da 16G a 26G	da 050 a 300 mm	---		OMEp = disposable needle with peripheral nerve block under echography – without mandrel – with connecting tube
OMEpxxyy-01	da 16G a 26G	da 050 a 300 mm	---	01 = affilatura a 30°	OMEp-01 = disposable needle with peripheral nerve block under echography – without mandrel – with connecting tube (30° angle tip)
OMECxxyy-αα	da 16G a 26G	da 05 a 30 cm	---		OMEC = Chiba disposable needle for cytological aspiration, echogenic cannula and tube
OMEBxxyy-αα	da 14G a 26G	da 05 a 30 cm	---		OMEB = disposable needle for brachytherapy
OIDxx/Dyy-αα	da 18G a 30G	da 20 a 40 mm	---		OIDxx/D = set for galactography with straight needle
OIDxx/Cyy-αα	da 18G a 30G	da 20 a 40 mm	---		OIDxx/C = set for galactography with curved needle
OIDKxx/Cyy-αα	da 18G a 30G	da 20 a 40 mm	---		OIDKxx/C = set for galactography with curved needle, 6 dilators and 1ml syringe
OIDKxx/Dyy-αα	da 18G a 30G	da 20 a 40 mm	---		OIDKxx/D = set for galactography with straight needle, 6 dilators and 1ml syringe
OIMxxyy-αα	da 14G a 25G	da 05 a 35 cm	---		OIM = disposable needle for mammary localization





CODE	RANGE XX	RANGE YY(Y)	RANGE Z(ZZ)	α	DESCRIPTION
0IMXxyyy-αα	da 14G a 25G	da 05 a 35 cm	---		0IMX = disposable needle for mammary localization with double hook
0PNAxyyy-αα	da 14G a 25G	da 05 a 35 cm	---		0PNA = disposable needle for mammary localization, not repositionable; BCA-type handle
0PRxyyy-αα	da 14G a 25G	da 05 a 35 cm	---		0PR = disposable needle for mammary localization; normal handle
0AETxyyyy-αα	da 18G a 30G	da 001 a 200 mm	---		0AET = disposable needle with triple tip for ENS electro stimulation
0AETxyyyy-01	da 18G a 30G	da 001 a 200 mm	---	01 = affilatura a 30°	0AET-01 = disposable needle with triple tip for ENS electro stimulation (30° angle tip)
0AETxyyyy-02	da 18G a 30G	da 001 a 200 mm	---	02 = affilatura a 45°	0AET-02 = disposable needle with triple tip for ENS electro stimulation (45° angle tip)
0AEQxyyyy-αα	da 18G a 30G	da 001 a 200 mm	---		0AEQ = disposable needle with Quincke tip for ENS electro stimulation
0AEQxyyyy-01	da 18G a 30G	da 001 a 200 mm	---	01 = affilatura a 30°	0AEQ-01 = disposable needle with Quincke tip for ENS electro stimulation (30° angle tip)
0AEQxyyyy-02	da 18G a 30G	da 001 a 200 mm	---	02 = affilatura a 45°	0AEQ-02 = disposable needle with Quincke tip for ENS electro stimulation (45° angle tip)
0AECxyyyy-αα	da 18G a 30G	da 001 a 200 mm	---		0AEC = disposable needle with Chiba tip for ENS electro stimulation
0AECxyyyy-01	da 18G a 30G	da 001 a 200 mm	---	01 = affilatura a 30°	0AEC-01 = disposable needle with Chiba tip for ENS electro stimulation (30° angle tip)
0AECxyyyy-02	da 18G a 30G	da 001 a 200 mm	---	02 = affilatura a 45°	0AEC-02 = disposable needle with Chiba tip for ENS electro stimulation (45° angle tip)

CODE	RANGE XX	RANGE YY(Y)	RANGE Z(ZZ)	α	DESCRIPTION
0AEYxxyyy-αα	da 18G a 30G	da 001 a 200 mm	---		0AEY = disposable needle with Thuoy tip for ENS electro stimulation
0AEYxxyyy-01	da 18G a 30G	da 001 a 200 mm	---	01 = affilatura a 30°	0AEY-01 = disposable needle with Thuoy tip for ENS electro stimulation (30° angle tip)
0AEYxxyyy-02	da 18G a 30G	da 001 a 200 mm	---	02 = affilatura a 45°	0AEY-02 = disposable needle with Thuoy tip for ENS electro stimulation (45° angle tip)
0AEPxxyyy-αα	da 18G a 30G	da 001 a 200 mm	---		0AEP = disposable needle with Pencil point tip and lateral hole for ENS electro stimulation
0AEPxxyyy-01	da 18G a 30G	da 001 a 200 mm	---	01 = affilatura a 30°	0AEP-01 = disposable needle with Pencil point tip for ENS electro stimulation (30° angle tip)
0AEPxxyyy-02	da 18G a 30G	da 001 a 200 mm	---	02 = affilatura a 45°	0AEP-02 = disposable needle with Pencil point tip for ENS electro stimulation (45° angle tip)
0AV01xxyyA	da 12G a 20G	da 05 a 25 cm	A = punta aperta		0AV01xxyyA = set for thoracentesis/paracentesis with tap and Verres needle, with open tip mandrel
0AV01xxyyB	da 12G a 20G	da 05 a 25 cm	B = 2 fori		0AV01xxyyB = set for thoracentesis/paracentesis with tap and Verres needle, with two holes mandrel
0AV01xxyyC	da 12G a 20G	da 05 a 25 cm	C = 3 cave		0AV01xxyyC = set for thoracentesis/paracentesis with tap and Verres needle, with 3 pits mandrel
0AV0103yy	03	da 05 a 25 cm	---		0AV0103yy = set for thoracentesis/paracentesis with tap and 3 needles
0AV02xxyyA	da 12G a 20G	da 05 a 25 cm	A = punta aperta		0AV02xxyyA = set for thoracentesis/paracentesis with valve and Verres needle with open tip mandrel
0AV02xxyyB	da 12G a 20G	da 05 a 25 cm	B = 2 fori		0AV02xxyyB = set for thoracentesis/paracentesis with valve and Verres needle, with 2 holes mandrel

CODE	RANGE XX	RANGE YY(Y)	RANGE Z(ZZ)	αα	DESCRIPTION
0AV02xxyyC	da 12G a 20G	da 05 a 25 cm	C = 3 cave		0AV02xxyyC = set for thoracentesis/paracentesis with valve and Verres needle, with 3 pits mandrel
0AV0203yy	03	da 05 a 25 cm	---		0AV0203yy = set for thoracentesis/paracentesis with valve and 3 needles
0AV03xxyyy	da 08 a 21G	da 030 a 300 mm	---		0AV03xxyyy = set for thoracentesis/paracentesis for removal of ascites and drainage needle
0AV0102	---	---	---		0AV0102 = set for drainage with 2 funnel needles, tap and tube 4.1 x 3 mm
0AVAxxyy	da 12G a 20G	da 05 a 25 cm	A = punta aperta		0AVAxxyy = Verres needle with normal slim joint, open point, 16° sharpen, without tap
0AVBxxyy	da 12G a 20G	da 05 a 25 cm	B = 2 fori		0AVBxxyy = Verres needle with normal slim joint, 2 holes, 16° sharpen, without tap
0AVCxxyy	da 12G a 20G	da 05 a 25 cm	C = 3 cave		0AVCxxyy = Verres needle with normal slim joint, 3 pits, 16° sharpen, without tap
0AVDxxyy	da 12G a 20G	da 05 a 25 cm	D = 1 foro		0AVDxxyy = Verres needle with normal slim joint, 1 hole, 16° sharpen, without tap
0AVAQxxyy	da 12G a 20G	da 05 a 25 cm	AQ = punta aperta, affilatura a 30° e rubinetto		0AVAQxxyy = Verres needle with normal slim joint, open tip, 30° sharpen, and tap
0AVBQxxyy	da 12G a 20G	da 05 a 25 cm	BQ = 2 fori, affilatura a 30° e rubinetto		0AVBQxxyy = Verres needle with normal slim joint, 2 holes, 30° sharpen, and tap
0AVCQxxyy	da 12G a 20G	da 05 a 25 cm	CQ = 3 cave, affilatura a 30° e rubinetto		0AVCQxxyy = Verres needle with normal slim joint, 3 pits, 30° sharpen, and tap

CODE	RANGE XX	RANGE YY(Y)	RANGE Z(ZZ)	αα	DESCRIPTION
0AVDQxxyy	da 12G a 20G	da 05 a 25 cm	DQ = 1 foro, affilatura a 30° e rubinetto		0AVDQxxyy = Verres needle with normal slim joint, 1 hole, 30° sharpen and tap
0AVAxxyy-02	da 12G a 20G	da 05 a 25 cm	A = punta aperta	02 = copertura PTFE	0AVAxxyy-02 = Verres needle with normal slim joint, open tip, 16° sharpen without tap and PTFE cover
0AVBxxyy-02	da 12G a 20G	da 05 a 25 cm	B = 2 fori	02 = copertura PTFE	0AVBxxyy-02 = Verres needle with normal slim joint, 2 holes, 16° sharpen without tap and PTFE cover
0AVCxxyy-02	da 12G a 20G	da 05 a 25 cm	C = 3 cave	02 = copertura PTFE	0AVCxxyy-02 = Verres needle with normal slim joint, 3 pits, 16° sharpen without tap and PTFE cover
0AVDxxyy-02	da 12G a 20G	da 05 a 25 cm	D = 1 foro	02 = copertura PTFE	0AVDxxyy-02 = Verres needle with normal slim joint, 1 hole, 16° sharpen without tap and PTFE cover
0AVAQxxyy-02	da 12G a 20G	da 05 a 25 cm	AQ = punta aperta, affilatura a 30° e rubinetto	02 = copertura PTFE	0AVAQxxyy-02 = Verres needle with normal slim joint, open tip, 30° sharpen, tap and PTFE cover
0AVBQxxyy-02	da 12G a 20G	da 05 a 25 cm	BQ = 2 fori, affilatura a 30° e rubinetto	02 = copertura PTFE	0AVBQxxyy-02 = Verres needle with normal slim joint, 2 holes, 30° sharpen, tap and PTFE cover
0AVCQxxyy-02	da 12G a 20G	da 05 a 25 cm	CQ = 3 cave, affilatura a 30° e rubinetto	02 = copertura PTFE	0AVCQxxyy-02 = Verres needle with normal slim joint, 3 pits, 30° sharpen, tap and PTFE cover
0AVDQxxyy-02	da 12G a 20G	da 05 a 25 cm	DQ = 1 foro, affilatura a 30° e rubinetto	02 = copertura PTFE	0AVDQxxyy-02 = Verres needle with normal slim joint, 1 hole, 30° sharpen, tap and PTFE cover
0AVAxxyy-01	da 12G a 20G	da 05 a 25 cm	A = punta aperta	01 = raccordo slim corto	0AVAxxyy-01 = Verres needle with normal slim joint, open tip, 16° sharpen, without tap



CODE	RANGE XX	RANGE YY(Y)	RANGE Z(ZZ)	α	DESCRIPTION
0AVBxxyy-01	da 12G a 20G	da 05 a 25 cm	B = 2 fori	01 = raccordo slim corto	0AVBxxyy-01 = Verres needle with normal slim joint, 2 holes, 16° sharpen without tap
0AVCxxyy-01	da 12G a 20G	da 05 a 25 cm	C = 3 cave	01 = raccordo slim corto	0AVCxxyy-01 = Verres needle with normal slim joint, 3 pits, 16° sharpen without tap
0AVDxxyy-01	da 12G a 20G	da 05 a 25 cm	D = 1 foro	01 = raccordo slim corto	0AVDxxyy-01 = Verres needle with normal slim joint, 1 hole, 16° sharpen without tap
0AVAQxxyy-01	da 12G a 20G	da 05 a 25 cm	AQ = punta aperta, affilatur a a 30° e rubinett o	01 = raccordo slim corto	0AVAQxxyy-01 = Verres needle with normal slim joint, open tip, 30° sharpen and tap
0AVBQxxyy-01	da 12G a 20G	da 05 a 25 cm	BQ = 2 fori, affilatur a a 30° e rubinett o	01 = raccordo slim corto	0AVBQxxyy-01 = Verres needle with normal slim joint, open tip, 30° sharpen, tap and PTFE cover
0AVCQxxyy-01	da 12G a 20G	da 05 a 25 cm	CQ = 3 cave, affilatur a a 30° e rubinett o	01 = raccordo slim corto	0AVCQxxyy-01 = Verres needle with normal slim joint, 3 pits, 30° sharpen and tap
0AVDQxxyy-01	da 12G a 20G	da 05 a 25 cm	DQ = 1 foro, affilatur a a 30° e rubinett o	01 = raccordo slim corto	0AVDQxxyy-01 = Verres needle with normal slim joint, 1 hole, 30° sharpen and tap
0AVAxxyy-03	da 12G a 20G	da 05 a 25 cm	A = punta aperta	03 = raccordo slim corto e copertura PTFE	0AVAxxyy-03 = Verres needle with normal slim joint, open tip, 16° sharpen without tap and PTFE cover
0AVBxxyy-03	da 12G a 20G	da 05 a 25 cm	B = 2 fori	03 = raccordo slim corto e copertura PTFE	0AVBxxyy-03 = Verres needle with normal slim joint, 2 holes, 16° sharpen without tap and PTFE cover

CODE	RANGE XX	RANGE YY(Y)	RANGE Z(ZZ)	αα	DESCRIPTION
0AVCxxyy-03	da 12G a 20G	da 05 a 25 cm	C = 3 cave	03 = raccordo slim corto e copertura PTFE	0AVCxxyy-03 = Verres needle with normal slim joint, 3 pits, 16° sharpen without tap and PTFE cover
0AVDxxyy-03	da 12G a 20G	da 05 a 25 cm	D = 1 foro	03 = raccordo slim corto e copertura PTFE	0AVDxxyy-03 = Verres needle with normal slim joint, 1 hole, 16° sharpen without tap and PTFE cover
0AVAQxxyy-03	da 12G a 20G	da 05 a 25 cm	AQ = punta aperta, affilatura a 30° e rubinetto	03 = raccordo slim corto e copertura PTFE	0AVAQxxyy-03 = Verres needle with normal slim joint, open tip, 30° sharpen without tap and PTFE cover
0AVBQxxyy-03	da 12G a 20G	da 05 a 25 cm	BQ = 2 fori, affilatura a 30° e rubinetto	03 = raccordo slim corto e copertura PTFE	0AVBQxxyy-03 = Verres needle with normal slim joint, 2 holes, 30° sharpen without tap and PTFE cover
0AVCQxxyy-03	da 12G a 20G	da 05 a 25 cm	CQ = 3 cave, affilatura a 30° e rubinetto	03 = raccordo slim corto e copertura PTFE	0AVCQxxyy-03 = Verres needle with normal slim joint, 3 pits, 30° sharpen without tap and PTFE cover
0AVDQxxyy-03	da 12G a 20G	da 05 a 25 cm	DQ = 1 foro, affilatura a 30° e rubinetto	03 = raccordo slim corto e copertura PTFE	0AVDQxxyy-03 = Verres needle with short slim joint, 1 hole, 30° sharpen without tap and PTFE cover