

**OLYMPUS**

**VISERA  
ELITE II**

HD Camera Head

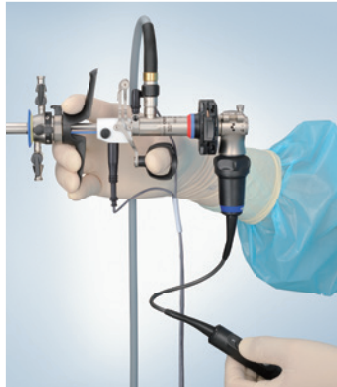
**CH-S200-08-LB**

**HD Lightweight Camera Head with Improved NBI Performance in VISERA ELITE II**



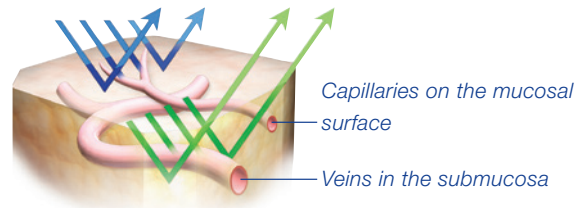
**Lightweight body for better ease of use and comfortable handling**

This small, lightweight, pendulum-style camera head is ergonomically designed to fit a surgeon's hand for procedures.



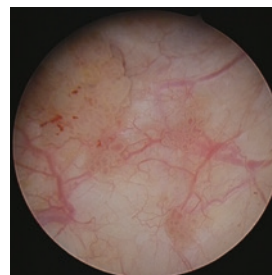
**Improved NBI Performance with VISERA ELITE II**

Narrow Band Imaging (NBI) works by filtering white light into specific light wavelengths that are absorbed by hemoglobin, providing enhanced visualization of capillary networks and mucosal morphology. By using the VISERA ELITE II system, this camera head produces 20% brighter NBI image.\*\*

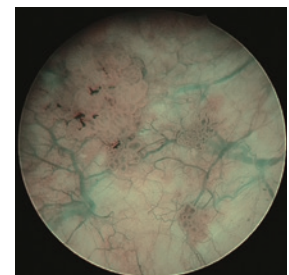


**High Definition Image**

The CH-200-08-LB camera head can capture much higher definition images than SD camera heads, which helps to improve diagnostic and therapeutic capabilities.



White Light Image\*



NBI\*

\* This image is taken by the CH-S190-08-LB, which has the same image quality design.  
\*\*compared with VISERA ELITE

**Compatibility with a Broad Range of Reprocessing Methods**

The CH-S200-08-LB camera head is compatible with the washer-disinfector (WD, ISO 15883-1, -2) and low-temperature hydrogen peroxide sterilization (Steris V-PRO® maX and STERRAD® 100S/NX/100NX).

Specifications		
<b>Size</b>	Camera head	ø32 x 87 mm
	Cable	ø3.3 mm x 3.5 m
	Weight	90 g (excluding switches (20 g))
<b>Observation</b>	Pickup system	Interline type CCD solid-state image pickup
<b>Classification (Electro-magnetic Equipment)</b>	Degree of protection against electric shock	Type BF
	Degree of protection against explosion	The product should be kept away from flammable gasses.
<b>Cleaning/Disinfection Sterilization</b>	Cleaning/Disinfection	Immersible in disinfectant solution and washer-disinfector
	Sterilization	Ethylene oxide gas and low-temperature hydrogen peroxide sterilization



HD CAMERA HEAD  
OLYMPUS CH-S200-08-LB



VISERA ELITE II  
VIDEO SYSTEM CENTER  
OLYMPUS OTV-S200/OTV-S300

Specifications, design and accessories are subject to change without any notice or obligation on the part of the manufacturer.

