

# MX7

## Ultrasound System



# Innovative Platform. Unbelievable Design.



The MX7 Ultrasound System has been thoughtfully designed to overcome the obstacles clinicians face in today's challenging healthcare environments. With a customizable touchscreen and revolutionary, software-based beamformer technology, the MX7 System combines excellent image quality with an intuitive user experience to help ensure reliable and efficient diagnosis during the most challenging exams.

With a weight and thickness of just 6.6 lbs and 1.7 in, respectively, the MX7 System's main unit is one of the lightest and thinnest laptop ultrasound machines in the industry; and the Magnesium Alloy shell makes this System ideal for withstanding difficult clinical environments. In addition, this compact, durable, and powerful System houses advanced hardware built to maximize performance in all applications.

Since its founding, Mindray has been dedicated to developing innovative and accessible ultrasound solutions for every clinical environment. It is this commitment to excellence that has brought you ZONE Sonography® Technology<sup>+</sup> (ZST<sup>+</sup>) and evolving industrial designs.

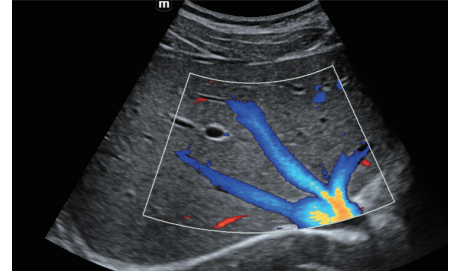




# Unsurpassed Imaging

## ZONE Sonography® Technology<sup>+</sup>

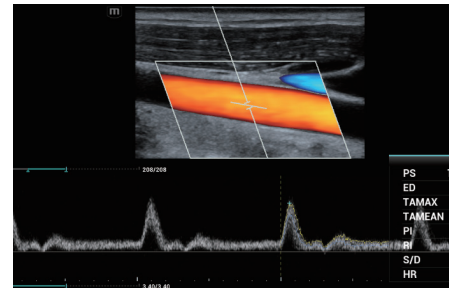
The industry's first virtual beamforming architecture, ZONE Sonography Technology<sup>+</sup> creates a perfectly focused image every pixel, every frame, every time, from skin line to deepest depths. The MX7 Ultrasound System is the first-ever laptop-based system to be powered by ZST<sup>+</sup>, providing mobility and reliability in an extraordinarily compact design.



Hepatic Vein

## General Imaging Solutions

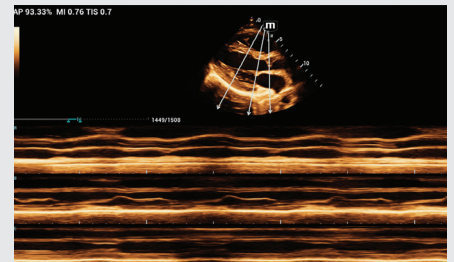
Whether in a clinic or office setting, clinicians require versatility in their ultrasound solutions. Exceptional general imaging performance and advanced analysis tools, combined with durability and portable design, make the MX7 the ideal partner for any clinical environment.



Carotid Duplex

## Cardiovascular Solutions

With excellent image quality, exceptional workflow, and advanced cardiovascular enhancement technologies, the MX7 helps professionals perform advanced exams with confidence and ease.



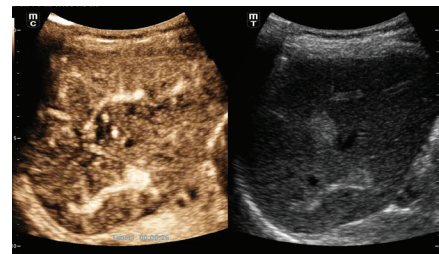
Anatomic M-Mode



# Technology

## UWN<sup>+</sup> Contrast Enhanced Ultrasound (CEUS)

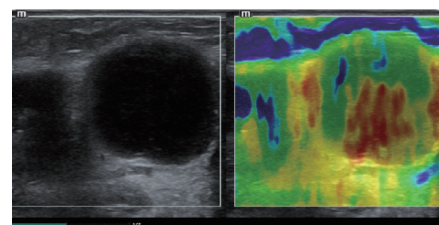
Ultra-Wideband Non-Linear (UWN<sup>+</sup>) contrast enhanced ultrasound (CEUS) uses both harmonic and fundamental signals to improve contrast and temporal resolution during CEUS studies. Enabled by ZST<sup>+</sup>, this allows for longer duration of perfusion in tissue and organ assessment.



UWN<sup>+</sup> CEUS

## Natural Touch Elastography

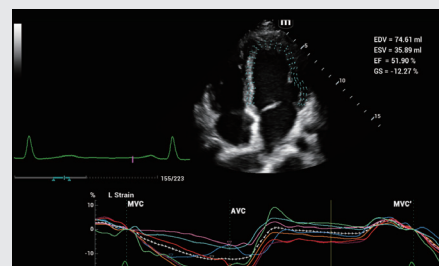
Natural Touch Elastography uses Mindray's patented technology to provide accurate and reproducible assessment of the elastic properties and stiffness of soft tissue.



Natural Touch Elastography

## Tissue Tracking Quantitative Analysis

Based on the System's high-quality transducer technology, the MX7 improves tracking accuracy and effectiveness. In addition, the Tissue Tracking with Quantitative Analysis can be performed at the bedside, saving time and simplifying more challenging diagnoses.



Tissue Tracking  
Quantitative Analysis

# Quality User Experiences



## Intuitive Interface

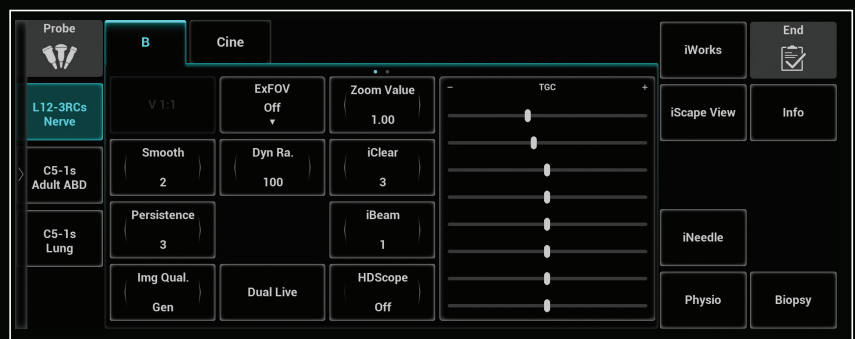
With a highly interactive design, the MX7 provides efficient workflow and ease of use for a better user experience. The Machine's iWorks™ protocol-based workflow feature helps to standardize and reduce exam times.

## Simplified Workflow

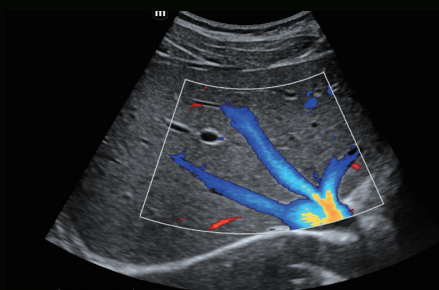
The multi-screen format makes it easier to access the information you need in fewer steps. The user-defined touchscreen simplifies workflow and reduces keystrokes, while the tilting monitor helps to optimize screen viewing from any angle.

## User-Centric Design

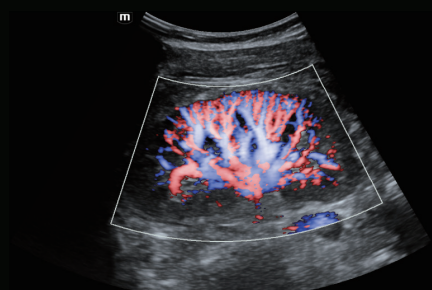
With a customizable user interface, the MX7 empowers clinicians to configure the System's touchscreen to ensure ease of operation through a personalized layout.



## Abdomen



Hepatic Vein

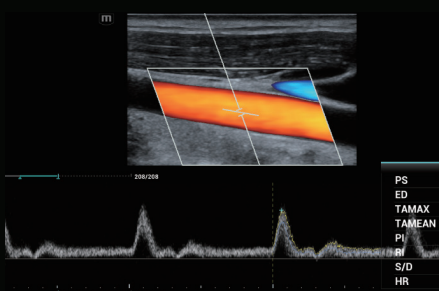


Renal Perfusion

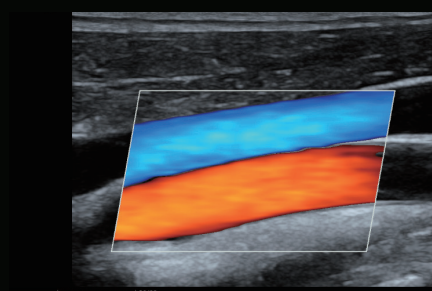


Liver

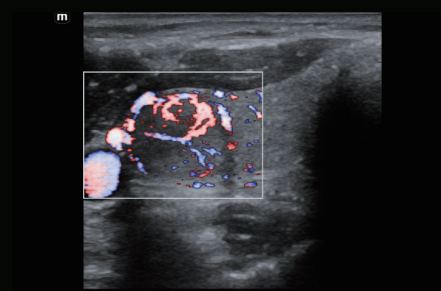
## Vascular and Small Parts



Carotid Duplex



Carotid and Jugular Vein

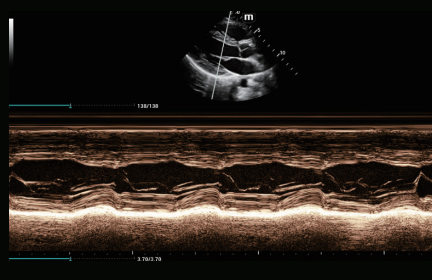


Thyroid Nodule

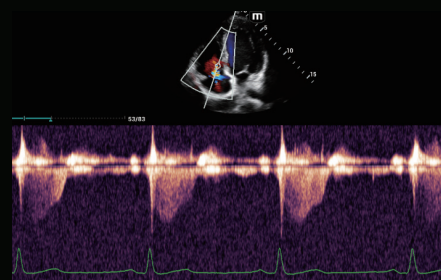
## Cardiac



Adult Cardiac



M-Mode



Tricuspid Regurgitation



# eXceeding Expectations

- 1 Magnesium Alloy design
- 2 Convenient transducer extender
- 3 Cable management
- 4 Innovative storage design for utility and practicality
- 5 Flexible height adjustment for optimal scanning
- 6 Vibration-reducing wheels for seamless transportability



## Mindray North America

800 MacArthur Blvd., Mahwah, NJ 07430

Tel: 800.288.2121 Support: 877.913.9663 Fax: 800.926.4275 [www.mindray.com](http://www.mindray.com)

Mindray® is a registered trademark of Shenzhen Mindray Bio-Medical Electronics Co., Ltd. All brands and product names are trademarks of their respective owners. ©2020 Mindray DS USA, Inc. Subject to change. 11/20 P/N: 0002-08-40475 Rev A

**mindray**  
healthcare within reach