



MULTIPOINT™ *TERMINAL UNITS*

CEILING PENDANTS M-GL

Ceiling pendants in operating rooms, intensive care wards, emergency rooms ensure:

Comfortable placement and operative positioning of life-support and controlling devices

Convenient handling of medical gases, compressed air, vacuum, low-voltage signals delivery to the patient's bed

Most useful usage of space around the operating table, patient's bed, ensuring free access to life-support and control devices

**Fixed position
ceiling pendants with one axis rotation**

For emergency rooms, intensive care wards and small operating rooms



- Can be equipped with:
- shelves with railings for suspended devices
- Shelf for the monitor
- I.V. Pole for infusion fluid bags and pumps
- examination lights
- bedside screen

M-GL03 TECHNICAL DATA

- Designed individually according to the height of facility
- Service head's turning angle 330 °
- Service head's length up to 1,5 m
- Maximum load 260 kg





M-GL06 One arm ceiling pendant



TYPICAL SET OF CEILING PENDANT

- Ceiling pendant's construction with fixation elements and conical roller bearings for service head fixation
- Service head consists of:
 - up to 12 outlets for medical gas, compressed air, vacuum
 - up to 24 electric sockets
 - up to 12 equipotential pins
 - up to 6 low-voltage signal outlets
 - digital control of medical gas pressure, vacuum with alarm in case of pressure deviation
- To service head mounted:
 - up to 3 shelves with railings (580x460x35 mm or 500x400x35 mm)
 - lower shelf with drawer
 - 1 or 2 infusion holders for infusion fluid bags and pumps
 - additional shelves for monitors

Complete set of ceiling pendant is arranged by order specification



Fixed position ceiling pendant with one axis rotation in Emergency Center examination room.



Arrangement of the M-GL ceiling pendants in the operating room at Emergency Center.

Anesthetic two arms ceiling pendant with vertical service head.
Lifting capacity up to 230 kg

Surgical two arms ceiling pendant with horizontal service head.
Lifting capacity up to 240 kg

One or two arms ceiling pendants

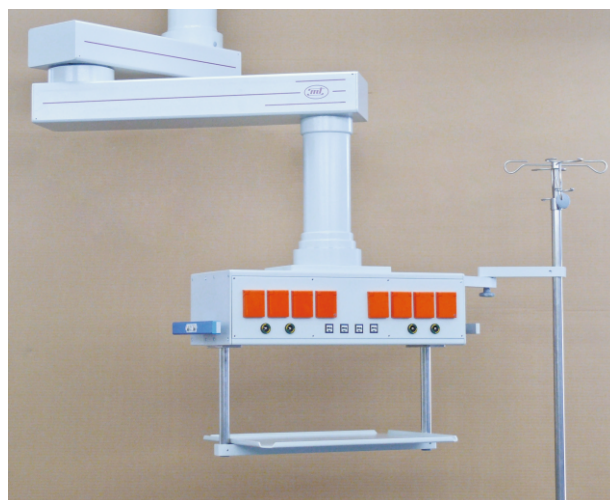
For anesthesia or surgery working place in the operating rooms or intensive care wards. Ceiling pendants enable convenient placement of control and life support devices and other various medical equipment. Provides supply of medical gas, electricity and low-voltage signals to surgery field or place of medical procedures.



M-GL09 Two arms ceiling pendant

TECHNICAL DATA

- Designed individually according to the height of facility
- Fixed arm and service head's turning angle 330°
- Fixed arm's length up to 1,8 m
- Service head's length up to 1,5 m
- Pneumatic-brakes with inversion (without absolute stop of compressed air)
- No not need to use a transitional module between ceiling and ceiling pendant's
- Maximum load 240 kg, depending on the length of arms



M-GL09H Two arms horizontal ceiling pendant

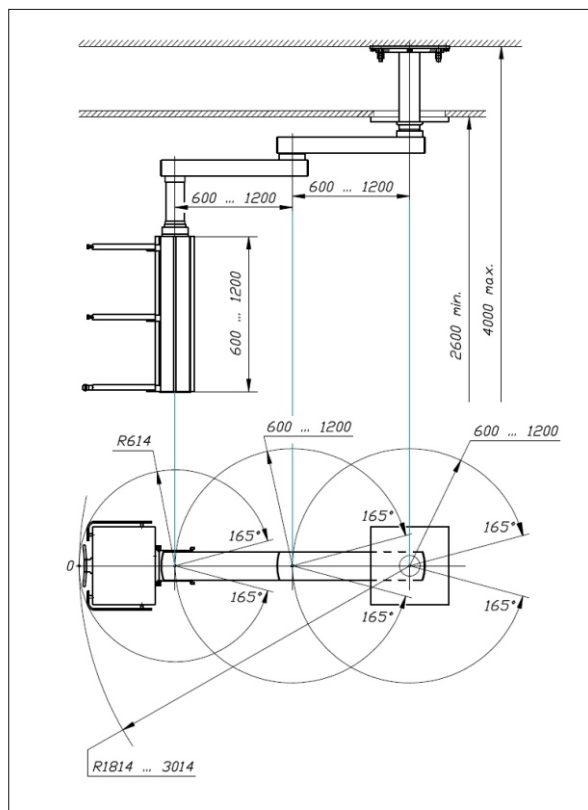


M-GL09 Two arms ceiling pendant for endoscopy





M-GL09 Two arms ceiling pendant



One or two arms height adjustable ceiling pendants

For convenient placement of anesthesia or surgical device in the operating rooms



M-GL09A Two arms height adjustable ceiling pendant

TECHNICAL DATA

- Designed individually according to the height of facility
- Arms length 0,6-1,0 m
- Height adjustable arms length 0,6-0,9 m
- Arms and service head's turning angle 330°
- With electro pneumobreaks
- Service head's length up to 1,5 m
- Service head's height adjustment 0,7 m
- Lifting capacity up to 240 kg
- Up to 4 height adjustable shelves fixed to the service head



M-GL09AH Two arms height adjustable ceiling pendant with horizontal service head

- Horizontal service head length 0,6-0,9 m
- Four horizontal rails for suspended devices
- Height of suspended shelf module with drawer up to 1000 mm
- Arms and service head's turning angle 330°
- Adjustable friction brakes



M-GL09A

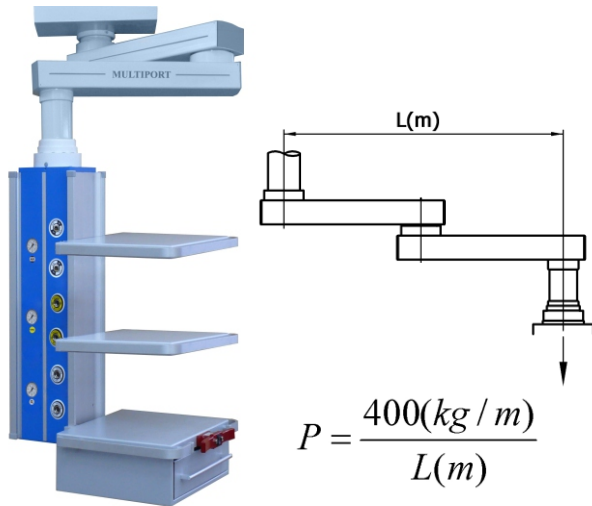
Two arms height adjustable ceiling pendant with hanging module for anesthesia machine or other workstations

Operating room with two arms height adjustable ceiling pendant M-GL09A for anesthetic equipment and surgical ceiling pendant M-GL09AH with horizontal service head.

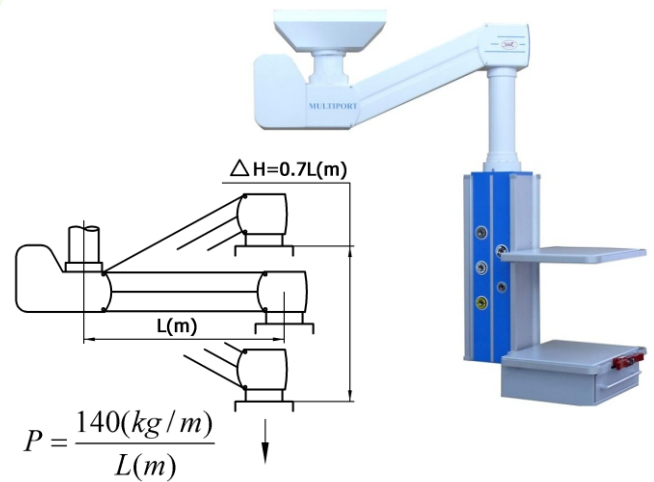




CEILING PENDANTS MULTIPOINT FEATURES



- Payload P for ceiling pendants M-GL06, M-GL09 is calculated using the formula, where L (m) is the distance between axes for fixing to the ceiling and service head.



- Payload P for ceiling pendants M-GL06A, M-GL09A with height adjustable service head is calculated using the formula, where L(m) the distance between the vertical axes of rotation of the height adjustable arm



- Reflected LED light sources on the ceiling pendant arms are letting to avoid tiring for patients direct light.

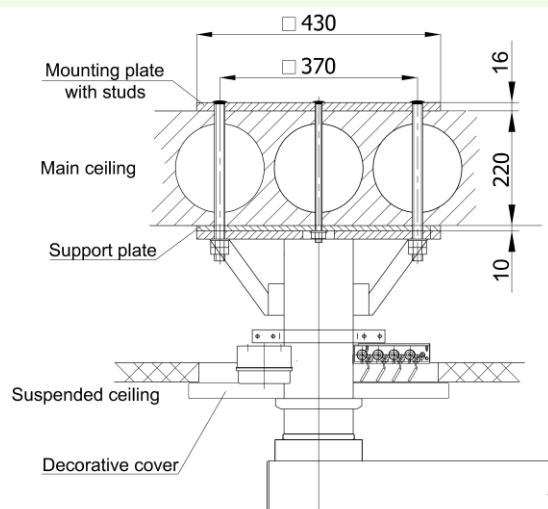


- Ceiling pendants service head with vertical stainless steel tubes Ø32 or Ø38 for various accessories mounting.

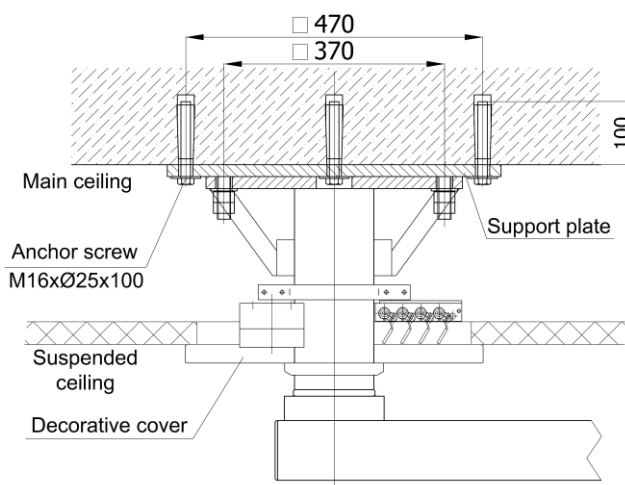
INSTALLATION OF CEILING PENDANTS MULTIPOINT

Ceiling pendants MULTIPORT mounting is performed without intermediate module in 3 fixing to the ceiling slab ways .

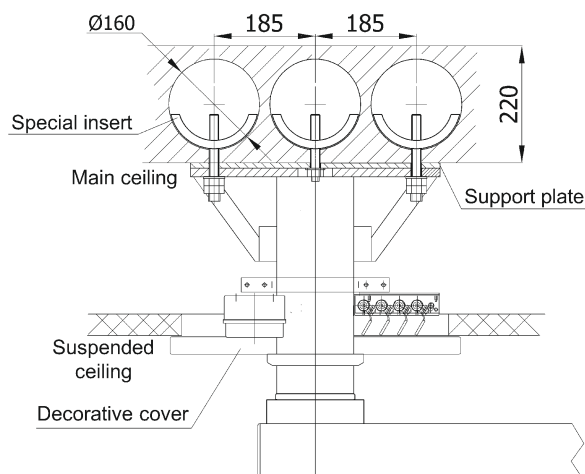
- Ceiling pendant mounted to the main ceiling through the ceiling slab.
- This method is the most secure and suitable for all types of ceiling.



- Ceiling pendant mounted with anchors to the monolithic ceiling slab.
- It requires high quality monolithic slab.
- This type of mounting does not damage flooring in upper floor.



- Ceiling pendant mounted to the hollow core slab with special inserts.
- This type of mounting does not damage flooring in upper floor.



Twin Ceiling Pendants

For specialised intensive care wards



M-GL06/09

Intensive care and reanimation ward with ceiling pendants M-GL06/M-GL09 and additional source of high intensity reflected light:

- Easy operative placing of all medical equipment on two service heads: monitoring and infusion;
- Maximum easy approach to the patient from all sides, without any equipment or connection cables on the ground of the ward.

- Colors of side panels:

RAL 3004

RAL 5015

RAL 6018

RAL 6027

anodized
aluminum

- Color of shelves:

RAL 7035

- Color of shoulders and carrying tubes:

RAL 9010

2 YEARS GUARANTEE for all **ceiling pendants**.

Ceiling pendants are designed and manufactured in accordance with directive 93/42/EEC requirements and other normative documents.