



24.1" Color LCD Monitor

RadiForce[®] MX243W



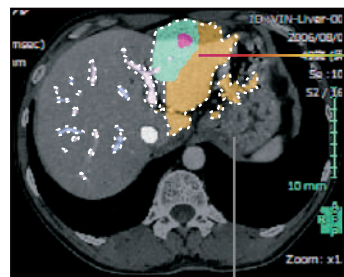
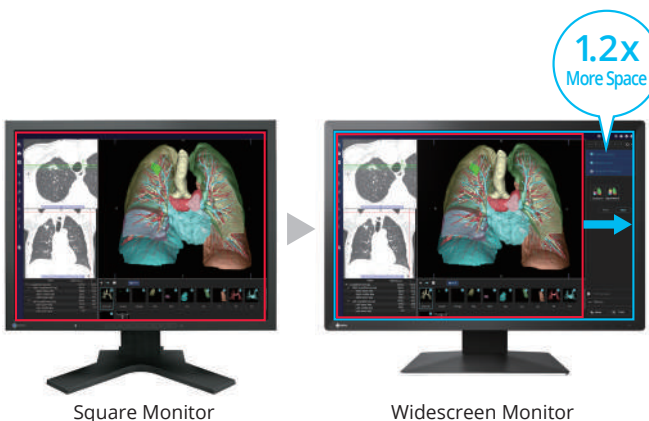
24.1-inch widescreen medical monitor with DICOM[®] Part 14 calibration for viewing medical images.

View More with Widescreen

The monitor has a resolution of 1920 x 1200 pixels and 16:10 aspect ratio. This provides more space for comfortably working with images, tool palettes, and other windows compared to conventional square monitors.

Display Both Monochrome and Color

The Hybrid Gamma PXL function automatically distinguishes between monochrome and color images pixel by pixel, creating a hybrid display where each pixel has optimum grayscale.



Automatically Distinguish & Display as Color Gamma 2.2

Automatically Distinguish & Display as Monochrome DICOM Part 14

RadiForce® MX243W

Elegant Cabinet Design

The monitor's cabinet is designed with rounded corners and elegant curves on the back to present a gentle aesthetic and facilitate a comforting environment for patients and medical staff.

Save Work Space with Sleek Cabinet Design

With the new monitor cabinet and stand design, compared to its predecessor, the monitor's width and depth are reduced by 23 mm and 45 mm respectively. This results in a monitor that takes up 24% less space, giving you more room for other tasks.

Make the Precise Diagnosis

EIZO carefully measures and sets each grayscale tone to create a monitor compliant with DICOM Part 14. This ensures the consistent shading possible, allowing for the accurate diagnosis.

Maintain the Precision

Perform a simplified calibration compliant with DICOM Part 14 using the bundled RadiCS LE quality control software. RadiCS LE corrects the brightness and grayscale tones of the monitor to maintain image accuracy and consistency over time.

Select the Ideal Mode for Modalities

The CAL Switch function allows you to choose various modes for different modalities such as CR, CT, and endoscopy. Using the bundled RadiCS LE software, modes can be set to automatically switch to optimal image viewing conditions.

Hassle-Free Multi-Monitor Configuration

Using the DisplayPort connection, you can drive several monitors in a daisy chain sequence. This allows you to configure a multi-monitor setup without the complicated hassle of excessive cabling.

A graphics board that supports daisy chain is necessary.

Conserve to Preserve

The monitor is made of approximately 19% recycled plastic. This cuts down on the amount of plastic waste going into the environment, conserves resources, and promotes reuse of materials for preserving our natural ecosystems.

Cushioning Environmental Impact

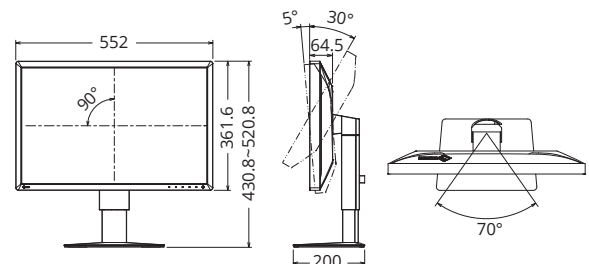
EIZO is moving away from using plastic and styrofoam in its packaging to reduce environmental impact. The monitor is safely packed using molded pulp, which is made from recycled cardboard and newspaper, and cables are wrapped in environmentally friendly pulp sheet instead of plastic bags.

Specifications

Panel	Type	Color (IPS)
	Backlight	LED
	Size	24.1" (61 cm)
	Native Resolution	1920 x 1200 (16:10 aspect ratio)
	Viewable Image Size (H x V)	518.4 x 324.0 mm
	Pixel Pitch	0.270 x 0.270 mm
	Display Colors	10-bit (DisplayPort): 1.07 billion from a palette of 543 billion (13-bit) colors 8-bit: 16.77 million from a palette of 543 billion (13-bit) colors
	Viewing Angles (H / V, typical)	178° / 178°
	Brightness (typical)	410 cd/m ²
	Recommended Brightness for Calibration	220 cd/m ²
	Contrast Ratio (typical)	1350:1
	Response Time (typical)	22 ms (black-white-black)
	Video Signals	Input Terminals
Output Terminals		DisplayPort (daisy chain)
Digital Scanning Frequency (H / V)		31 - 76 kHz / 59 - 61 Hz
USB	Upstream	USB 2.0: Type-B
	Downstream	USB 2.0: Type-A x 2
Power	Power Requirements	AC 100 - 240 V: 50 / 60 Hz
	Typical Power Consumption	26 W
	Maximum Power Consumption	56 W
	Power Save Mode	0.6 W or less
Sensor	Backlight Sensor	
Features & Functions	Brightness Stabilization	Yes
	Digital Uniformity Equalizer	Yes
	Hybrid Gamma PXL	Yes
	Work-and-Flow	Point-and-Focus
	Preset Modes	CAL Switch (DICOM, CAL1, CAL2, Custom, sRGB, Text)
	OSD Languages	English, German, French, Italian, Japanese, Simplified Chinese, Spanish, Swedish, Traditional Chinese
Physical Specifications	Net Weight	7.8 kg
	Net Weight (Without Stand)	4.9 kg
	Hole Spacing (VESA Standard)	100 x 100 mm
Certifications & Standards (Please contact EIZO for the latest information)	CE / UKCA EN60601-1 (Medical Device), ANSI/AAMI ES60601-1, CAN/CSA-C22.2 No. 60601-1, IEC60601-1, VCCI-B, FCC-B, CAN ICES-3 (B), RCM, RoHS, China RoHS, WEEE, CCC, EAC	
FDA	510(k) Clearance for General Radiography*	
Dedicated Software	Monitor Quality Control Software RadiCS	Supported
	Supplied Accessories (May vary by country. Please contact EIZO for details.)	Signal Cables
	Others	AC power cord (3 m), USB Type-A - USB Type-B cable (3m), Utility Disk (RadiCS LE, PDF instructions for use, PDF installation manual), instructions for use
Warranty	5 Years	

* Display of mammography images for diagnosis is not supported.

Dimensions (Unit: mm)



EIZO Corporation

153 Shimokashiwano, Hakusan, Ishikawa 924-8566 Japan
Phone +81-76-277-6794, Fax +81-76-277-6793

<https://www.eizoglobal.com>

EIZO, the EIZO Logo, RadiForce and RadiCS are registered trademarks of EIZO Corporation in Japan and other countries. DICOM is the registered trademark of the National Electrical Manufacturers Association for its standards publications relating to digital communications of medical information. All other company and product names and logos are trademarks or registered trademarks of their respective owners. Specifications are subject to change without notice.