

SonoScape

S9

Feel the Difference

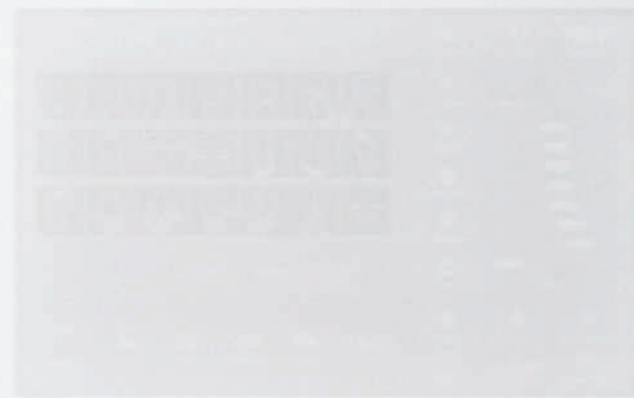


SonoScape

SonoScape Medical Corp.
2F, 12th Building, Shenzhen Software Park Phase II, Keji Middle
2nd Road, Shenzhen, China
Tel: +86-755-26722890 Fax: +86-755-26722850
Email: market@sonoscape.net www.sonoscape.com

U-S920200310

Since releasing its first portable color Doppler ultrasound system, SonoScape has dedicated itself to the ultrasound field. From this dedication, a great deal of ultrasound technologies, especially in hand-carried systems have emerged. From this dedication, the S9 was released as a powerful and versatile imaging platform with a futuristic design. Compact, yet featuring comprehensive applications for cardiology, radiology, abdomen, obstetrics, gynecology, small parts and urology, S9 provides the best solution for ultrasound imaging through outstanding performance.



Powerful

Smart

Stylish

Feel the Difference

S9



Powerful

A Multi-function Power Platform with Innovation

The S9 is embedded with SonoScape's core imaging technologies, which significantly elevates the imaging quality to a new level and reveals more diagnostic information for the clinician. Working with the S9, you can see more clearly, diagnose more confidently and work more comfortably.

Stress Echo

Stress echo is the combination of 2D echocardiography with a physical or pharmacological stress, which can determine how the heart muscles respond to stress and is mainly used to diagnose and evaluate coronary artery disease. The S9's stress echo package, comes with a fully integrated and easily programmable interface that can be customized to fit your needs, all for the purpose of delivering a streamlined workflow for wall motion scoring and reporting.

Real-time 3D (4D)

With increased physical channels and a new platform, the S9 offers both high quality imaging and high frame rates to meet a new standard of SonoScape's S series. Thanks to high frame rate and advanced technologies, the 4D imaging of S9 delivers smooth movement of the fetus and offers comprehensive 4D acquisition, data rendering, and post-processing functionality.

High Density Probe

S9 is equipped with a high density phased array probe to meet the needs of both high frame rate and premium resolution in cardiac imaging. Thanks to the high sensitivity of SonoScape's color Doppler mapping, the S9 can provide an accurate cardiac diagnosis beyond your imagination.

Spatial Compound Imaging

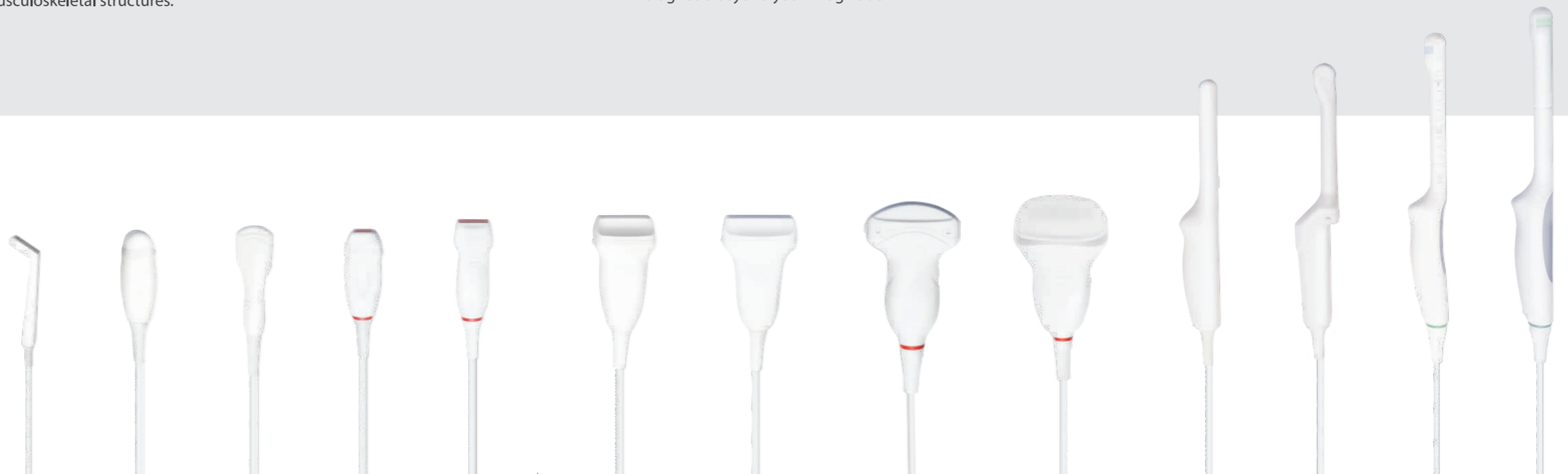
Spatial Compound Imaging utilizes several lines of sight for optimal contrast resolution, speckle reduction and border detection, with which the S9 is ideal for superficial and abdominal imaging for better clarity and improved continuity of structures.

Pulse Inversion Harmonic Imaging

The harmonic signals are fully preserved without degradation of the acoustic information, which makes it possible for the S9 to image high-level details and improve contrast resolution by reducing noise and clutter in the visualization of subtle lesions, small parts, vascular and so on.

C-xlasto elastography

SonoScape provides the S9 with a new method to support the physician in assessing tissue elasticity. The differences in tissue responses are detected and visualized in real-time by the elastography algorithms through different graphical representations which can be particularly helpful in analyzing breast, thyroid and musculoskeletal structures.



Smart



Perform Your Operation, Feel the Difference

SonoScape aims to design medical equipment that has incorporated state-of-art technologies combined with optimal workflow. The full-sized touch screen of the S9 surpasses the hardware limitations of the traditional keyboard, increasing the possibility of an easier operation.

Using the S9, you will experience faster operations on a variety of applications, including the most difficult of diagnostic tasks. View these programs below, and be inspired to boost your productivity.



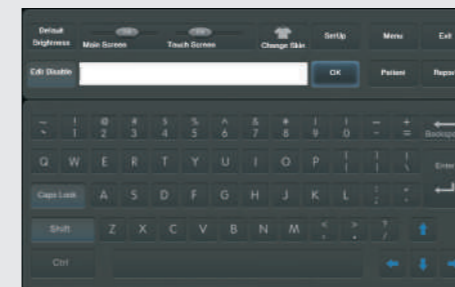
Intuitive Graphic Icon

Guides operators in the exam mode with a single touch



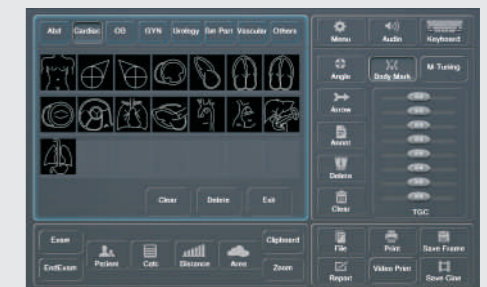
Convenient Adjustment

All parameters can be easily adjusted by pressing the smart touch screen



Virtual Alphabet Keyboard

Ensures patient information and doctor comments can be inputted easily



Specific Application Packages

Measurement items, body marks and annotations are classified in terms of different applications



Stylish

Take Your Premium Performance Anywhere

SonoScape's S9 offers the highest standard of ergonomics and delivers to you the latest technological innovations with highly-integrated chip sets, which enables excellent portability and flexibility. Incorporated with an intelligent and style-changeable smart touch screen, the S9 has set a new standard for ultrasound scanning, which will bring you unprecedented ease-of-use.



50° Foldable 15" LCD Display
Graphical User Interface Touch Screen



140° Opening Angle
Abundant Connection Interface



Stylish Trolley with Adjustable Height



Sturdy Suitcase in Low-pitched
Luxurious Style

