



BAYLAN WATER METERS WARRANTY CERTIFICATE



MANUFACTURER COMPANY

Title : Baylan Ölçü Aletleri San. Ve Tic. Ltd. Şti.
Address : A.O.S.B. 10032 Sk. No:16 Cigli-Izmir-Turkey
Tel : 0.232.4979700
Fax : 0.232.4979751
Email : info@baylanwatermeters.com
Date :
Authorized Sign. : 
Company Stamp :

SELLER COMPANY

Title :
Address :
Tel :
Fax :
Email :
Invoice Date :
Date and Place :
Authorized Sign. :
Company Stamp :

PRODUCT

Type : WATER METER
Brand : **BAYLAN**
Model :

Warranty Period : 2 YEAR
Max. Repair Time : days
Bandrol ve Seri No :

WARRANTY CONDITIONS

1. Warranty period starts after delivery date of the goods, and valid for 3 years.
2. Goods and all spare parts are under the guarantee of our company.
3. If a product becomes defective in the warranty period, the time period spent during maintenance is added to warranty period. Maximum repairing time for a meter is 20 days. This time period starts after informing service centres. If service centre is not available, then agents, exporter or manufacturer must be informed instead.
4. In the warranty period, if a product becomes defective due to material or workmanship, the maintenance is provided without charging any cost.
5. The defects due to wrong use of the product specified in the manual are out of Warranty. (Wrong installation, unsuitable usage of the customer etc.)

MATTERS TO BE CONSIDERED DURING TRANSPORTATION: During transportation, the product must be transported in its original packaging. During unloading, loading and transportation, the product should be protected from impacts. During loading into the vehicle, it must be ensured that the packaging is completely closed and not damaged.

INFORMATION ON USAGE ERRORS: The device should be stored under the connection and environmental conditions specified in the product catalog after assembly suitable for use. If these conditions are not met, the device is out of warranty.

CONDITIONS, OUT OF WARRANTY COVERAGE:

Defects those occur due to

1. Not protecting the meters from external effects (frost, rain, dust, mud etc.)
2. Particles in the water and using low quality water.
3. Using water above 50°C temperature in cold water meters.
4. The meters without seal or with damaged seal are out of coverage of Warranty.
5. Measuring flow rate which is more than its capacity.
6. Measuring liquids except water.

KK.16/00 Rev. Tarihi: -

PROTECTION PRECAUTIONS:

1. To protect meters against frost in cold weather; foam or insulator material should be used to cover the meter.
2. To protect meters from mechanical effects, rain or mud; keep under a covered, protected place

SERVICE, MAINTENANCE AND REPAIR:

There are no user-made repairs inside the product. Do not physically interfere to open it. Only the outer surface can be cleaned with a slightly damp cloth. Our product does not require periodic maintenance.

LIFETIME:

The service life of the product is 10 years.

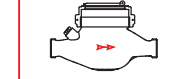
INSTRUCTIONS FOR INSTALLATION OF METERS

Installation of meters to Water Network:

1. It is necessary to install the meter to the water system in the correct direction and angle according to protective precautions.
2. In new installed pipeline, there can be outer materials which effects the working of the meters negatively like particles from construction or painting, must be wiped.
3. Before installation of a meter, both end of the pipeline must be levelled on the same axis, and flow direction must be specified.
4. Meter is installed to the system on the flow direction of the water. The arrow on the side of the meter indicates the flow direction of the meter.
5. The pipe diameter of the system must be same with the nominal diameter of the meter.
6. The water meter must be connected to the network in the correct position according to the figure on the right.

SPEED BASED WATER METER

RIGHT CONNECTION OF NETWORK

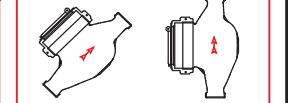
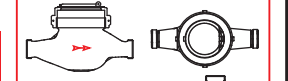


WRONG CONNECTION OF NETWORK



VOLUMETRIC, ULTRASONIC AND WOLTMAN WATER METERS

RIGHT CONNECTION OF NETWORK



WRONG CONNECTION OF NETWORK



Ultrasonic and Volumetric water meters; It is designed to measure reverse flow accurately.

Single-jet, multi-jet and woltman water meters; It is designed to allow reverse flow and not measure accurately.

Note: If optionally, there is a check valve in the counters, the reverse flow is prevented by the check valve.



COMPLIANCE WITH WEEE REGULATION AND DISPOSAL OF WASTE PRODUCT

This product does not contain harmful and prohibited substances specified in the "Regulation on Control of Electrical and Electronic Equipment" published by the T.C. Ministry of Environment, Urbanization and Climate Change. It complies with the WEEE Regulation. This product is manufactured from high quality parts and materials that can be recycled and reused. Therefore, do not dispose of the product with household or other waste at the end of its service life.

Take it to a collection point for the recycling of electrical and electronic equipment. Ask your local government about these collection points. Help protect the environment and natural resources by recycling used products.