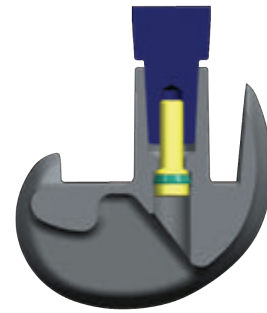


U2 PSA Revision Knee

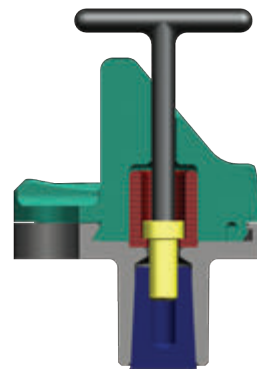
S Y S T E M

Features of the U2 PSA Revision Knee System

Femoral Locking Screw secures extension taper with a built-in C ring to prevent the screw from backing out.

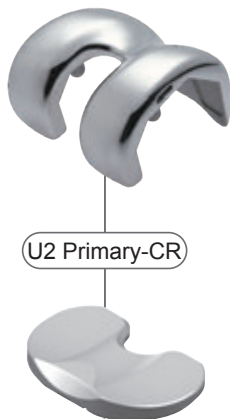


Built-in reinforcement bushing and locking screw within the tibial insert extends into the baseplate to provide additional structural support and to resist shearing force from the femur. (Patent Pending)



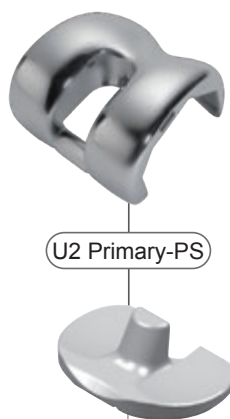
U2 PSA Revision Knee System is Compatible with U2 Primary Knee System

■ U2 Primary-CR



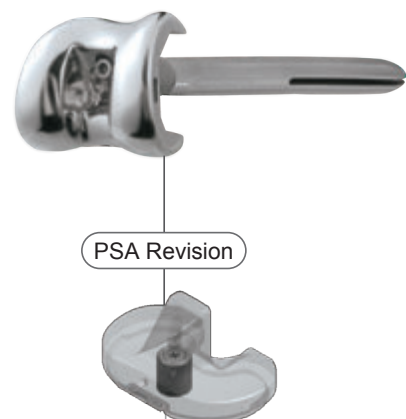
U2 Primary-CR

■ U2 Primary-PS

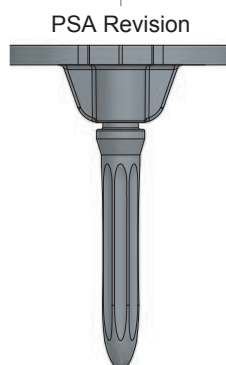


U2 Primary-PS

■ PSA Revision



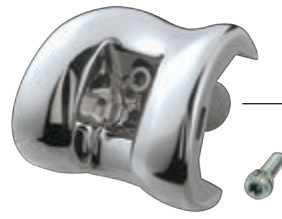
PSA Revision



PSA Revision

Femoral Component

- Cobalt-Chromium alloy
- 6 sizes (left/right)
- Cemented design
- Compatible with tibial inserts of all sizes
- Locking screw for securing the extension stem



Tibial Insert

- UHMWPE
- 6 sizes and 8 thicknesses
- Built-in reinforcement bushing for extra structural support
- Screw fixation to increase the insert stability



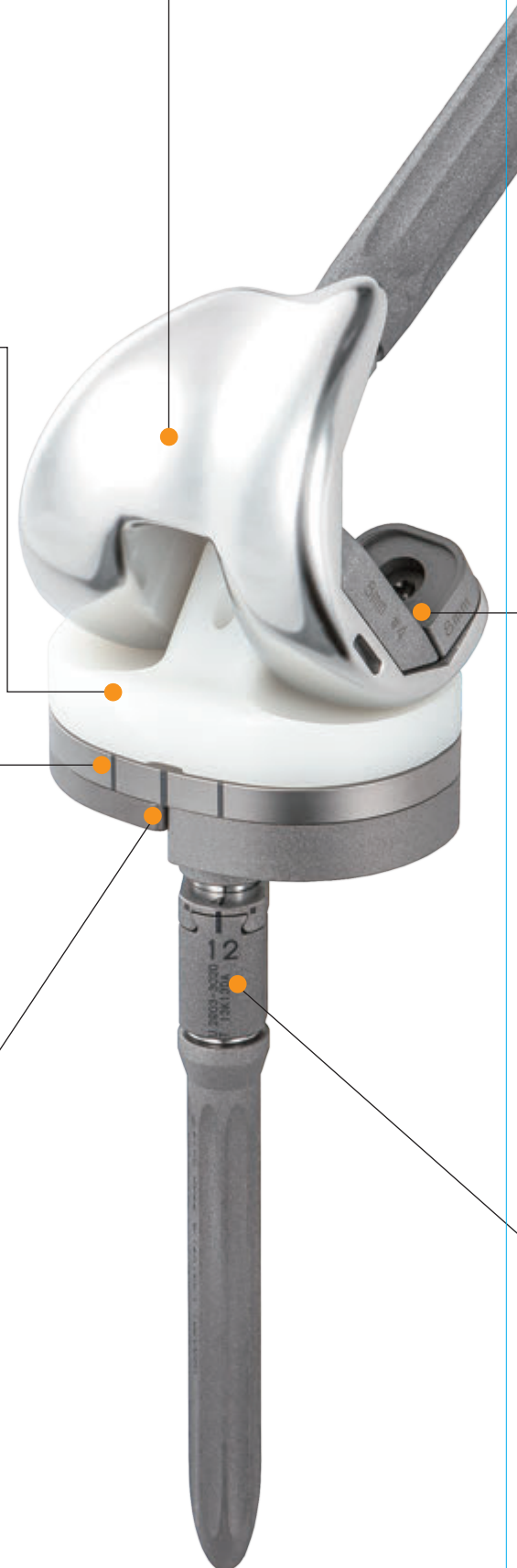
Tibial Baseplate

- Titanium alloy (Ti-6Al-4V)
- 6 sizes
- Fully capture design to minimize micro-movement



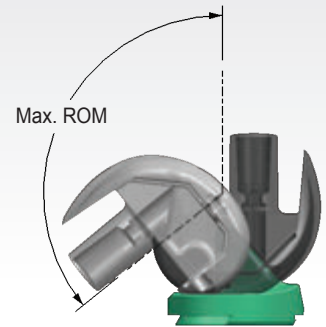
Tibial Augment

- Titanium alloy (Ti-6Al-4V)
- 6 sizes and 3 thicknesses (5,10 and 15 mm)
- Screw-fixation

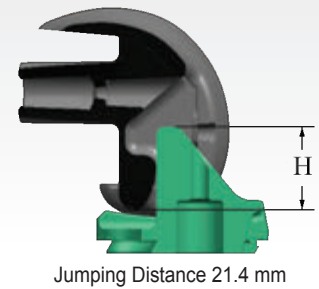
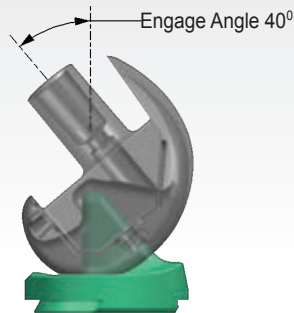


More Constraints Provide More Stability for Revision

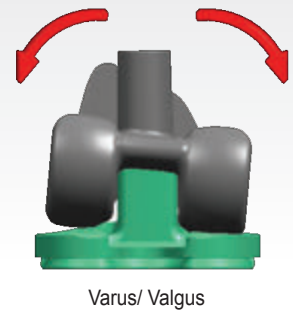
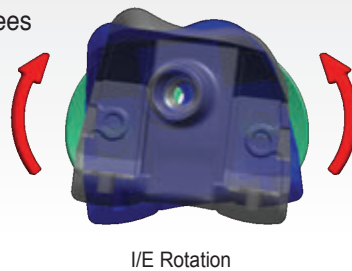
- Maximum Range of Motion (ROM) from 129 degrees to 134 degrees



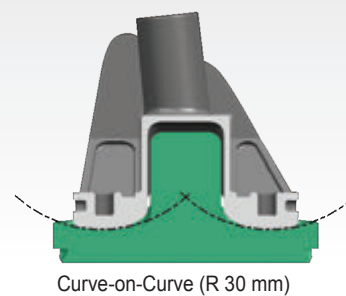
- Post and Cam early engaged for stability
- Higher jumping distance for better security



- Confined Internal/External (I/E) Rotation to ± 3.7 degrees to emulate natural kinematics
- Restricted varus/valgus lift-off angles to ± 1.4 degrees to increase stability

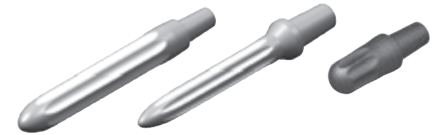


- Curve-on-Curve design provides better constraint and increases contact surface area to reduce wear



Straight Stem

Number	Description	Number	Description
2703 - 5003	Ø14 x 30 mm	2703 - 5051	Ø10 x 150 mm
2703 - 5011	Ø10 x 75 mm	2703 - 5052	Ø12 x 150 mm
2703 - 5012	Ø12 x 75 mm	2703 - 5053	Ø14 x 150 mm
2703 - 5013	Ø14 x 75 mm	2703 - 5054	Ø16 x 150 mm
2703 - 5014	Ø16 x 75 mm	2703 - 5055	Ø18 x 150 mm
2703 - 5015	Ø18 x 75 mm	2703 - 5056	Ø20 x 150 mm ★
2703 - 5016	Ø20 x 75 mm ★	2703 - 5057	Ø22 x 150 mm ★
2703 - 5021	Ø10 x 100 mm	2703 - 5058	Ø24 x 150 mm ★
2703 - 5022	Ø12 x 100 mm	2703 - 5061	Ø10 x 200 mm ★
2703 - 5023	Ø14 x 100 mm	2703 - 5062	Ø12 x 200 mm ★
2703 - 5024	Ø16 x 100 mm	2703 - 5063	Ø14 x 200 mm ★
2703 - 5025	Ø18 x 100 mm	2703 - 5064	Ø16 x 200 mm ★
2703 - 5026	Ø20 x 100 mm ★	2703 - 5065	Ø18 x 200 mm ★
		2703 - 5066	Ø20 x 200 mm ★
		2703 - 5067	Ø22 x 200 mm ★
		2703 - 5068	Ø24 x 200 mm ★



Curved Stem

Number	Description	Number	Description
2703 - 5031	Ø10 x 150 mm	2703 - 5071	Ø10 x 240 mm ★
2703 - 5032	Ø12 x 150 mm	2703 - 5072	Ø12 x 240 mm ★
2703 - 5033	Ø14 x 150 mm	2703 - 5073	Ø14 x 240 mm ★
2703 - 5034	Ø16 x 150 mm	2703 - 5074	Ø16 x 240 mm ★
2703 - 5035	Ø18 x 150 mm	2703 - 5075	Ø18 x 240 mm ★
2703 - 5036	Ø20 x 150 mm ★	2703 - 5076	Ø20 x 240 mm ★
2703 - 5037	Ø22 x 150 mm ★	2703 - 5077	Ø22 x 240 mm ★
2703 - 5038	Ø24 x 150 mm ★	2703 - 5078	Ø24 x 240 mm ★
2703-5041	Ø10 x 200 mm ★		
2703-5042	Ø12 x 200 mm ★		
2703-5043	Ø14 x 200 mm ★		
2703-5044	Ø16 x 200 mm ★		
2703-5045	Ø18 x 200 mm ★		
2703-5046	Ø20 x 200 mm ★		
2703-5047	Ø22 x 200 mm ★		
2703-5048	Ø24 x 200 mm ★		



Tibial Augment

Number	Description	Number	Description
2803 - 5211	#1 5mm	2803 - 5113	L.M./R.L. #1 15mm
2803 - 5221	#2 5mm	2803 - 5213	R.M./L.L. #1 15mm
2803 - 5231	#3 5mm	2803 - 5123	L.M./R.L. #2 15mm
2803 - 5241	#4 5mm	2803 - 5223	R.M./L.L. #2 15mm
2803 - 5251	#5 5mm	2803 - 5133	L.M./R.L. #3 15mm
2803 - 5261	#6 5mm	2803 - 5233	R.M./L.L. #3 15mm
2803 - 5212	#1 10mm	2803 - 5143	L.M./R.L. #4 15mm
2803 - 5222	#2 10mm	2803 - 5243	R.M./L.L. #4 15mm
2803 - 5232	#3 10mm	2803 - 5153	L.M./R.L. #5 15mm
2803 - 5242	#4 10mm	2803 - 5253	R.M./L.L. #5 15mm
2803 - 5252	#5 10mm	2803 - 5163	L.M./R.L. #6 15mm
2803 - 5262	#6 10mm	2803 - 5263	R.M./L.L. #6 15mm



Femoral Screw

Number	Description
2903 - 1014	Femoral Screw



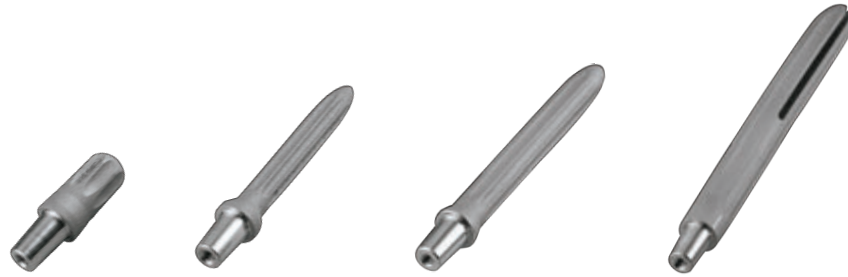
Offset Stem Adaptor

Number	Description
2903 - 3010	2 mm
2903 - 3020	4 mm
2903 - 3030	6 mm



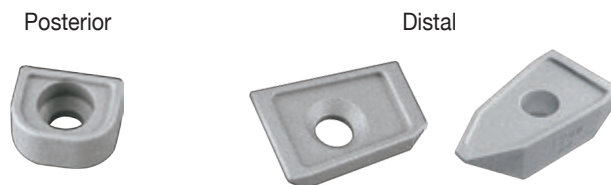
For special order items, please contact our representatives for further details.

Extension Press Fit Stem (Straight and Curved)



- Titanium alloy (Ti-6Al-4V)
- 5 lengths of straight stem
 - Short stem – 30 mm in length with 14 mm diameter
 - Long stem – 75, 100, 150 and 200 mm in length and comes in 8 diameters
- Curved stem – 150, 200 and 240 mm in length and comes in 8 diameters
- Grooves/open-slot are applied to maintain flexibility

Femoral Augment (Posterior and Distal)



- Cobalt-Chromium alloy
- Posterior augment – 6 sizes and 2 thicknesses (4, 8 mm)
- Distal augment – 6 sizes and 4 thicknesses (4, 8, 12 and 16 mm)
- Screw fixation

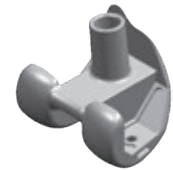
Offset Adaptor



- Titanium alloy (Ti-6Al-4V)
- 2, 4, and 6 mm offset
- Fits both femoral and tibial components
- Full-range orientation for both femoral and tibial alignment

Femoral Component

Number	Description	Number	Description
2103 - 5110	#1 Left	2103 - 5210	#1 Right
2103 - 5120	#2 Left	2103 - 5220	#2 Right
2103 - 5130	#3 Left	2103 - 5230	#3 Right
2103 - 5140	#4 Left	2103 - 5240	#4 Right
2103 - 5150	#5 Left	2103 - 5250	#5 Right
2103 - 5160	#6 Left	2103 - 5260	#6 Right



Tibial Baseplate

Number	Description	Number	Description
2203 - 5210	#1	2203 - 5240	#4
2203 - 5220	#2	2203 - 5250	#5
2203 - 5230	#3	2203 - 5260	#6



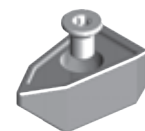
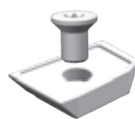
Tibial Insert

Number	Description	Number	Description
2303 - 5011	#1 9 mm	2303 - 5041	#4 9 mm
2303 - 5012	#1 11 mm	2303 - 5042	#4 11 mm
2303 - 5013	#1 13 mm	2303 - 5043	#4 13 mm
2303 - 5014	#1 15 mm	2303 - 5044	#4 15 mm
2303 - 5015	#1 18 mm	2303 - 5045	#4 18 mm
2303 - 5016	#1 21 mm	2303 - 5046	#4 21 mm
2303 - 5017	#1 25 mm	2303 - 5047	#4 25 mm
2303 - 5018	#1 30 mm ★	2303 - 5048	#4 30 mm ★
2303 - 5021	#2 9 mm	2303 - 5051	#5 9 mm
2303 - 5022	#2 11 mm	2303 - 5052	#5 11 mm
2303 - 5023	#2 13 mm	2303 - 5053	#5 13 mm
2303 - 5024	#2 15 mm	2303 - 5054	#5 15 mm
2303 - 5025	#2 18 mm	2303 - 5055	#5 18 mm
2303 - 5026	#2 21 mm	2303 - 5056	#5 21 mm
2303 - 5027	#2 25 mm	2303 - 5057	#5 25 mm
2303 - 5028	#2 30 mm ★	2303 - 5058	#5 30 mm ★
2303 - 5031	#3 9 mm	2303 - 5061	#6 9 mm
2303 - 5032	#3 11 mm	2303 - 5062	#6 11 mm
2303 - 5033	#3 13 mm	2303 - 5063	#6 13 mm
2303 - 5034	#3 15 mm	2303 - 5064	#6 15 mm
2303 - 5035	#3 18 mm	2303 - 5065	#6 18 mm
2303 - 5036	#3 21 mm	2303 - 5066	#6 21 mm
2303 - 5037	#3 25 mm	2303 - 5067	#6 25 mm
2303 - 5038	#3 30 mm ★	2303 - 5068	#6 30 mm ★



Femoral Augment Set

Number	Description	Number	Description
2603 - 5111	Distal L.M./R.L. #1 4 mm	2603 - 5313	Distal #1 12 mm
2603 - 5211	Distal L.L./R.M. #1 4 mm	2603 - 5323	Distal #2 12 mm
2603 - 5121	Distal L.M./R.L. #2 4 mm	2603 - 5333	Distal #3 12 mm
2603 - 5221	Distal L.L./R.M. #2 4 mm	2603 - 5343	Distal #4 12 mm
2603 - 5131	Distal L.M./R.L. #3 4 mm	2603 - 5353	Distal #5 12 mm
2603 - 5231	Distal L.L./R.M. #3 4 mm	2603 - 5363	Distal #6 12 mm
2603 - 5141	Distal L.M./R.L. #4 4 mm	2603 - 5314	Distal #1 16 mm
2603 - 5241	Distal L.L./R.M. #4 4 mm	2603 - 5324	Distal #2 16 mm
2603 - 5151	Distal L.M./R.L. #5 4 mm	2603 - 5334	Distal #3 16 mm
2603 - 5251	Distal L.L./R.M. #5 4 mm	2603 - 5344	Distal #4 16 mm
2603 - 5161	Distal L.M./R.L. #6 4 mm	2603 - 5354	Distal #5 16 mm
2603 - 5261	Distal L.L./R.M. #6 4 mm	2603 - 5364	Distal #6 16 mm
2603 - 5112	Distal L.M./R.L. #1 8 mm	2603 - 5011	Posterior #1 4 mm
2603 - 5212	Distal L.L./R.M. #1 8 mm	2603 - 5021	Posterior #2 4 mm
2603 - 5122	Distal L.M./R.L. #2 8 mm	2603 - 5031	Posterior #3 4 mm
2603 - 5222	Distal L.L./R.M. #2 8 mm	2603 - 5041	Posterior #4 4 mm
2603 - 5132	Distal L.M./R.L. #3 8 mm	2603 - 5051	Posterior #5 4 mm
2603 - 5232	Distal L.L./R.M. #3 8 mm	2603 - 5061	Posterior #6 4 mm
2603 - 5142	Distal L.M./R.L. #4 8 mm	2603 - 5012	Posterior #1 8 mm
2603 - 5242	Distal L.L./R.M. #4 8 mm	2603 - 5022	Posterior #2 8 mm
2603 - 5152	Distal L.M./R.L. #5 8 mm	2603 - 5032	Posterior #3 8 mm
2603 - 5252	Distal L.L./R.M. #5 8 mm	2603 - 5042	Posterior #4 8 mm
2603 - 5162	Distal L.M./R.L. #6 8 mm	2603 - 5052	Posterior #5 8 mm
2603 - 5262	Distal L.L./R.M. #6 8 mm	2603 - 5062	Posterior #6 8 mm





UOC USA Inc.

20 Fairbanks, Suite 173
Irvine, CA 92618
Tel: (949) 328-3366
Fax: (949) 328-3367

For our valued distribution partners, you can reach our customer service associates at customerservice@uocusa.com

For assistance on general and/or product related inquiries, please email us at sales@uocusa.com



Please refer to the product-specific package inserts for important information, including indications, contraindications, warnings, precautions, and potential adverse effects.

All Rights Reserved, © 2013 United Orthopedic Corp.
www.uocusa.com

0299-B-05-04-US