

# Xerox® DocuMate® 5540

## Motivation to Scan Difficult Documents and ID Cards

- Scans documents at 40 ppm and 80 ipm in duplex\*
- Legal size flatbed
- 70 page ADF capacity\*\*
- Create text searchable PDFs in one touch
- Scans plastic cards through the ADF
- Programmable OneTouch destinations for workgroups
- Ultrasonic Double Feed Detection
- Daily Duty Cycle – 5,000 pages

\*200 or 300 dpi, b&w, greyscale, or color  
\*\*20 lb., 75-80 g/m<sup>2</sup> paper

### Inspire Your Department to Become More Productive

Designed with features that will change how you look at and manage paper documents, the Xerox® DocuMate® 5540 will help employees reduce paper in the office, share documents electronically, search and retrieve documents quickly and back-up documents for protection or archiving. Unorganized paperwork is not only a security risk, but traditional filing boxes are expensive to store and difficult to search. Installing fast, cost-effective departmental scanners, like the DocuMate 5540, throughout your organization will help employees achieve higher levels of productivity and almost immediate return on investment.

### Engineered for Anything

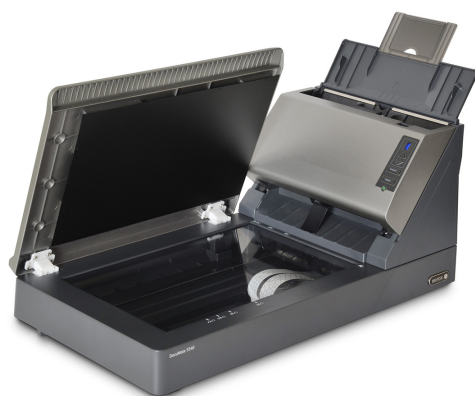
You don't always know what documents will cross your desk next. You might have clean laser quality pages today, but tomorrow there may be multi-part forms, embossed ID cards, or mixed batches of all these. With its high-quality CCD (charge-coupled device) imaging sensor,

Received the "Highly Recommended" rating and Certificate of Reliability from Buyers Lab Test Report 2015, plus Outstanding A4 Flatbed Mid-Size Workgroup Scanner from BLI Summer 2015 Pick Awards.

the Xerox® DocuMate® 5540 handles it all. The 70-page automatic document feeder makes it quick and simple to capture both sides of long documents as well as plastic cards including driver's licenses and medical or insurance cards. Easily scan books, magazines, binders or other bulky items on the A4 /legal sized flatbed. And all documents can be converted to text-searchable PDF or other popular file format in one easy step.

Save time on common tasks by creating up to 9 scan-to shortcuts. The Xerox® DocuMate® 5540 is powered by Visioneer OneTouch® technology to scan documents using the optimal settings for resolution, color, duplex, auto-crop, auto-straighten, file formats as well as the file's destination be it a local folder, email, software application, printer or even the cloud. All at the touch of a button. Not only is this a productivity gain, but it greatly reduces the training requirements for scanner users. As a shared device, the DocuMate 5540 improves efficiency and ROI in the office.

Never miss a page due to a misfeed or from multiple pages going through the scanner at once. Advanced roller separation technology and adjustable Double Feed Detection is built into the scanner for security against lost images. So, go ahead and scan without sorting your mixed media pages of different sizes. The Xerox® DocuMate® 5540 will exceed your expectations and achieve all of your scanning requirements at the touch of a button.



# Xerox® DocuMate® 5540 Scanner Software Solutions

## Visioneer®

### OneTouch

Visioneer OneTouch® is an easy-to-use utility that connects the DocuMate 5540 scanner with a powerful set of scanner settings to greatly improve the efficiency of your workflow—so that with one touch, the document is scanned automatically to email, Microsoft® Word, your printer, or simply a file folder. In addition to scanning directly to all popular destinations, Visioneer OneTouch also links the DocuMate 5540 with industry-leading document management software, such as Xerox® DocuShare® or Microsoft SharePoint®—forming an easy-to-use workflow from paper to a selected destination. A Software Development Kit (SDK) is also available which provides the ability to develop specific links and integrate them into the Visioneer OneTouch control panel quickly and easily.

### Acuity

Acuity enables your scanner to instantly improve the visual clarity of every document that you scan. Using advanced algorithms and dynamic thresholding Acuity will intelligently correct documents containing imperfections, improve quality of scanned images for archiving, increase OCR accuracy, and save time.

### Nuance®

#### OmniPage® Pro

OmniPage Pro provides a precise OCR and layout retention solution, quickly turning scanned documents into editable, formatted text. The text can then be used in virtually any word processing, desktop publishing or web publishing program.

### PaperPort®

Millions of professionals rely on PaperPort to save time and money by transforming paper documents into searchable digital documents. PaperPort combines the efficiency of document management, the convenience of superbly scanned documents and the power of creating PDF files, to bring a new level of operational proficiency to your organization.

#### PDF Converter Pro

Nuance PDF Converter is the smarter PDF software choice for businesses. Combining powerful functionality, superior Microsoft Office® support, built-in intelligence, DMS integration, and intuitive ease of use, Nuance PDF Converter provides everything you need to create, convert, edit, assemble, and securely share PDF files for increased productivity, enhanced collaboration, and improved compliance.

### Xerox® DocuMate® 5540 Product Specifications

Model Number	XDM5540-U	
Scan Speed	40 ppm / 80 ipm: 200 or 300 dpi (black & white, grayscale, or color)	
Scan Method	Duplex Automatic Document Feeder / Flatbed	
Image Sensor	CCD (Charge Coupled Device)	
Light Source	White LED lamps	
Background	ADF: Grey	Flatbed: Black
Optical Resolution	600 dpi	
Output Bit Depth	24-bit color, 8-bit grayscale, 1-bit black & white	
Interface	Hi-speed USB 2.0 (1.1 compatible)	
Detection	Ultrasonic Double Feed Detection	
Maximum Card Thickness	0.051" (1.25 mm)	
Dimensions (paper trays extended)	27.2"(w) x 12.6"(d) x 17"(h) (691 x 319 x 431 mm)	
Weight	18.5 lb (8.4 kg)	
ADF Minimum Document Size	2.75" x 2" (70 x 51 mm)	
ADF Maximum Document Size	8.5" x 14" (216 x 356 mm)*	
Flatbed Minimum Document Size	0.5" x 0.5" (13 x 13 mm)	
Flatbed Maximum Document Size	8.5" x 14" (216 x 356 mm)	
Document Weight	7-110 lbs (28*-400 g/m <sup>2</sup> paper)	
ADF Capacity	70 pages (20 lb., 75-80 g/m <sup>2</sup> paper)	
Duty Cycle	5,000 pages/day	

\*supports paper length up to 118" (2,997 mm)

For more information about the Xerox line of scanners, visit [www.xeroxscanners.com](http://www.xeroxscanners.com)



©2015 Xerox Corporation. All rights reserved. Xerox®, Xerox and Design®, DocuMate® and DocuShare® are trademarks of Xerox Corporation in the United States and/or other countries and are used under license from Xerox Corporation. Visioneer is an authorized trademark licensee of Xerox®. Visioneer and OneTouch® are trademarks of Visioneer, Inc. Nuance® and OmniPage® are trademarks of Nuance Communications, Inc. or its affiliates in the United States and/or other countries. Microsoft®, SharePoint®, Windows Vista®, Windows®, the Windows logo and XP® are trademarks of Microsoft Corporation in the United States and/or other countries. Intel® and Pentium® are trademarks of Intel Corporation in the U.S. and/or other countries. Universal Serial Bus is a trademark of USB Implementers Forum, Inc. (USB-IF). TWAIN™ is a trademark of TWAIN Working Group. ISIS® and QuickScan™ are trademarks of EMC Corporation. All other trademarks are the property of their respective owners and are hereby acknowledged. Prices, features, specifications, capabilities, appearance and availability of Xerox® products and services are subject to change without notice. 08/15 BR16100

### Box Contents

- Xerox® DocuMate® 5540 Scanner
- Power Cable
- USB Cable
- Power Supply
- Quick Installation Guide
- Technical Support Card
- DVD-ROM including:
  - User's Manual
  - Nuance OmniPage Pro
  - Nuance PaperPort
  - Nuance PDF Converter Pro
  - Visioneer® OneTouch®
  - Visioneer Acuity
  - Scanner Drivers: Visioneer DriverPLUS TWAIN™, ISIS® and Microsoft Windows Image Acquisition (WIA) Driver

### PC Minimum System Requirements

- Intel® Pentium® 4 or equivalent processor
- Windows® 10 / 8 / 7 / Vista® / XP®
- 2GB RAM
- 350 MB available hard disk space
- DVD-ROM drive
- USB port