



## lem plus iC

Ceiling suspended tubestand

### Product Data

#### Mechanical features

Weight	271 kg (131 kg rails + transversal structure; 140 kg tube stand)
Mounting	At ceiling on two beams UPN 100 - UNI 5680 (not supplied)
Suggested ceiling height	2700 ÷ 3100mm (Lem Plus iC 150) 3100 ÷ 3500mm (Lem Plus iC 180)
Longitudinal rail length	4400 mm
Transversal rail length	3000 mm
Longitudinal movement	Manual, run 3260 mm. Motorized in option
Transversal movement	Manual, run 2020 mm. Motorized in option
Tube arm vertical movement	Motorized. Travel 1500 mm (Lem Plus iC 150) Travel 1800 mm (Lem Plus iC 180)
Focus to floor distance	260÷1760 mm about (Lem Plus iC 150, ceiling h= 2778mm) 260÷2060 mm about (Lem Plus iC 180, ceiling h= 3178mm)
Working area useful coverage	3920 x 2350 mm
Tube rotation around vertical axis	Manual, +200° / -135°. Motorized in option
Tube rotation around horizontal axis	Motorized, +150° / -190°



## Functions

X-ray tube predisposition	All Villa models
Position of user interface and controls	Touch screen user interface on the tube head. Below there is a handle with push-buttons for the activation of the movements of the ceiling suspension
Touch screen interface	8.4" touch screen display with graphical user interface. Functions available: - Display of patient's card with patient's name and exam to perform (for configurations with digital systems) - Selection of: most-used SID, tube's rotation angle, working position, auto-tracking movement, size of collimated area - Display of the focal distance of the used grid - Integration with the generator, with possibility to select the exposure parameters and fields of measuring chamber
Movement locking	Permanent magnet brakes
Centering indication	Mechanical detent in the working positions and color-coded markers on the movement axis
Horizontal/oblique auto-tracking	Tables' bucky automatically follows the longitudinal movement of the ceiling suspension and the tube rotation to keep the tube-receptor alignment
Vertical auto-tracking	Function with double tracking: - The tube automatically follows the vertical movement of the receptor to keep the tube-receptor alignment (with the chest stand) or the preset SID (with elevating table) - The chest stand's receptor automatically follows the tube when it is moved in the vertical direction. It requires motorized chest stand
Stitching (option)	Procedure typically dedicated to exam of vertebral column and inferior limbs. A set of exposure, taken on the chest stand or on the table, are automatically acquired and pasted in a single image by the digital acquisition system. Function available only with digital acquisition system, it requires ceiling suspension with vertical and rotation motorized tube movement, automatic collimator
Auto-positioning (option)	In function of the anatomic procedure, the system automatically sets position of ceiling suspension and tube, position of receptor, focus-receptor distance, size of collimated area, additional filtration. Function available only with digital acquisition system, it



	requires ceiling suspension with all motorized movements, automatic collimator
--	--

### Collimator

Type	Automatic collimator with digital display of X-ray field and focus-receptor distance
Collimation	Square and rectangular
Rotation	+90° / -90°
Light source	LED with timer for X-ray field highlighting. Laser for the centering on the receptor's support
SID measurement	Digital indication and retractable tape measure
Field coverage	48 x 48 cm at 1 m
Filtration	Inherent filtration 2 mm Al eq. @ 75 kV
Additional filtration	With manual and motorized setting. Values of added filtration: 1 mm Al + 0.1 mm Cu; 1 mm Al + 0.2 mm Cu; 2 mm Al

### Electrical features

Power supply voltage	230 Vac ±10% single phase
Frequency	50/60 Hz
Power	350 VA

### Environmental conditions

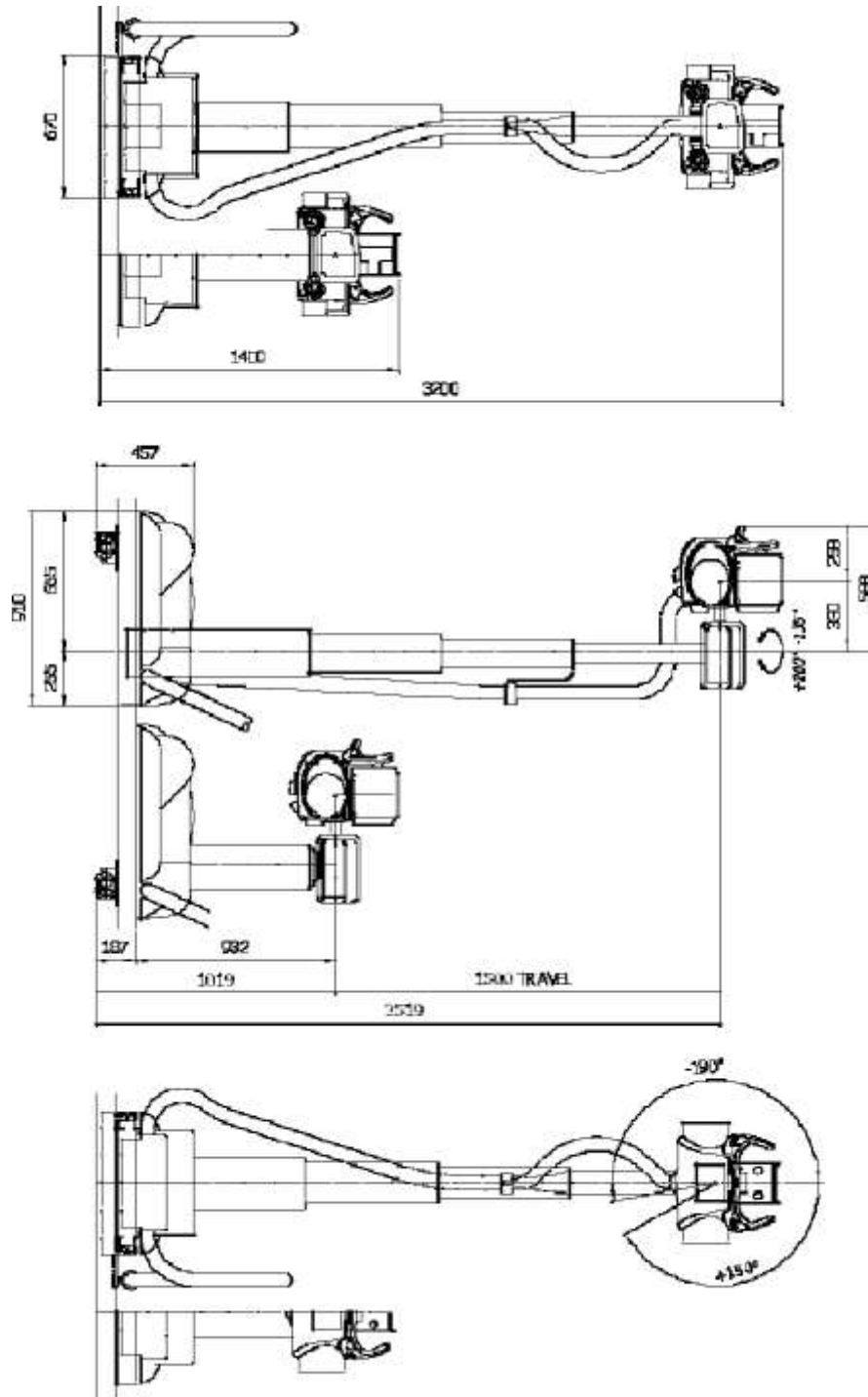
Operating conditions	Temperature: +10° □ +40° Celsius Humidity: 30% □ 75% Pressure: 700 □ 1100 hPa
Conditions for transport and storage	Temperature: -10° □ +50° Celsius Humidity: 10% □ 90% non condensing Pressure: 500 □ 1100 hPa

### Standards and regulations

<b>CE</b>	CE symbol grants the product compliance to the European Directive for Medical Devices 93/42/EEC and its revised versions as a class I device
-----------	--



Dimensions (all quotes in mm) - Lem Plus iC 150





Dimensions (all quotes in mm) - Lem Plus iC 180

