

**VEXVE**

Product Range 2016



# Vexve Oy

With the most comprehensive range, Vexve Oy is one of the world's leading manufacturer of high quality valves specifically developed for the most demanding District Heating and District Cooling applications. Vexve also has an extensive range of valves developed for Oil & Gas applications as well as heating and cooling (HVAC/R) systems. In addition, Vexve also develops and delivers smart control solutions for hydronic systems.

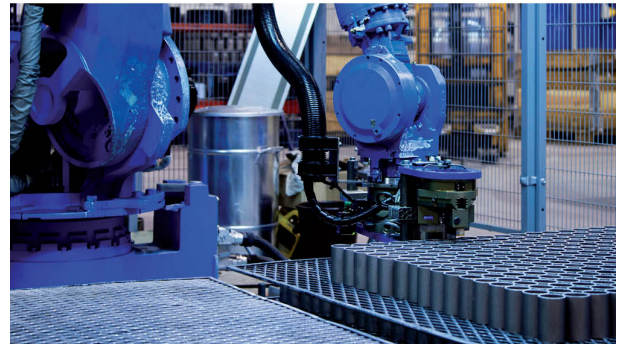
Vexve solutions are designed to deliver the highest possible energy efficiency and cost-effectiveness throughout the entire heating and cooling network – from district heating power stations and centralized cooling plants, to pumping stations and individual buildings.

Vexve manufactures and delivers two high quality valve brands, Vexve® and Naval®, in addition to Hydrox™ hydraulic actuators and Vexve™ smart heating controllers and mixing valves.

Vexve Oy is a Finnish-based family-owned business delivering products and services that save energy and improve the environment. The company has been in operation for more than 50 years and today delivers its products and services worldwide to customers in Helsinki to Beijing, and from Milan to Doha and Moscow. Vexve is known for high quality, fast delivery and superior customer service as well as its specialized expertise in energy and the environment – especially for district heating and cooling.

Vexve Oy's highly advanced, automated production methods along with constant quality monitoring and development are the foundation of Vexve's quality products. To further ensure the highest quality only the best raw materials and components are used in the manufacture of Vexve products. Vexve's operations are ISO9001 & ISO3834-2, ISO14001, and PED certified and manufactured valves meet all required quality criteria and standards including EN488, PED, and GOST.

Keep **energy** under control



# Contents

## Steel ball valves, reduced bore

|  |    |
|--|----|
| DN 10-250 , welding/welding, EN (DIN)              | 7  |
| DN 10-50 high, welding/welding, EN (DIN)           | 8  |
| DN 20-200 strong, welding/welding, EN (DIN)        | 9  |
| DN 300-600 , welding/welding, EN (DIN)             | 10 |
| DN 700-800 , welding/welding, EN (DIN)             | 11 |
| DN 10-250 , welding/welding, GOST                  | 12 |
| DN 300-600 , welding/welding, GOST                 | 13 |
| DN 700-800 , welding/welding, GOST                 | 14 |
| DN 10-50 , female threads/welding, EN (DIN)        | 15 |
| DN 10-50 high, female threads/welding, EN (DIN)    | 16 |
| DN 15-25 , male threads and plug/welding, EN (DIN) | 17 |
| DN 10-50 , female threads/female threads           | 18 |
| DN 10-50 high, female threads/female threads       | 19 |
| DN 15-250 , flange/flange                          | 20 |
| DN 15-250 PN 25, flange/flange                     | 21 |
| DN 300-600 , flange/flange                         | 22 |
| DN 300-600 PN 25, flange/flange                    | 23 |
| DN 700-800 , flange/flange                         | 24 |
| DN 700-800 PN 25, flange/flange                    | 25 |
| DN 15-300 , flange/welding, EN (DIN)               | 26 |
| DN 15-300 PN 25, flange/welding, EN (DIN)          | 27 |

## Steel ball valves, reduced bore with gears and actuators

|   |    |
|---|----|
| DN 100-600 , welding/welding, EN (DIN) with manual gear | 28 |
| DN 700-800 , welding/welding, EN (DIN) with manual gear | 29 |
| DN 100-600 , welding/welding, GOST with manual gear     | 30 |
| DN 700-800 , welding/welding, GOST with manual gear     | 31 |
| DN 100-600 , flange/flange with manual gear             | 32 |
| DN 100-600 PN 25, flange/flange with manual gear        | 33 |
| DN 700-800 PN 25, flange/flange with manual gear        | 34 |
| DN 700-800 , flange/flange with manual gear             | 35 |

## Steel ball valves, full bore

|  |    |
|--|----|
| DN 15-500 , welding/welding, EN (DIN)  | 36 |
| DN 600-800 , welding/welding, EN (DIN) | 37 |
| DN 600-800 , welding/welding, GOST     | 38 |
| DN 15-500 , flange/flange              | 39 |
| DN 15-500 PN 25, flange/flange         | 40 |
| DN 600-800 , flange/flange             | 41 |
| DN 600-800 PN 25, flange/flange        | 42 |

## Steel ball valves, full bore with gears and actuators

|   |    |
|---|----|
| DN 100-500 , welding/welding, EN (DIN) with manual gear | 43 |
|---|----|

|   |    |
|---|----|
| DN 600-800 , welding/welding, EN (DIN) with manual gear | 44 |
| DN 100-500 , welding/welding, GOST with manual gear     | 45 |
| DN 600-800 , welding/welding, GOST with manual gear     | 46 |
| DN 100-500 , flange/flange with manual gear             | 47 |
| DN 100-500 PN 25, flange/flange with manual gear        | 48 |
| DN 600-800 , flange/flange with manual gear             | 49 |
| DN 600-800 PN 25, flange/flange with manual gear        | 50 |

## Long stem ball valves, reduced bore

|  |    |
|--|----|
| DN 25-400 , welding/welding, EN (DIN)                    | 51 |
| DN 200-800 , welding/welding, EN (DIN)                   | 52 |
| DN 25-300 SL, welding/welding, EN (DIN)                  | 53 |
| DN 200-300 SL, welding/welding, EN (DIN) with angle gear | 54 |
| DN 200-800 , welding/welding, EN (DIN) with angle gear   | 55 |

## Special purpose ball valves

|  |    |
|--|----|
| DN 25-50 Air release valve / Short, female threads/welding, EN (DIN) | 56 |
| DN 20-50 Air release valve / Long, female threads/welding, EN (DIN)  | 57 |

## Long stem ball valves, full bore

|  |    |
|--|----|
| DN 25-350 with hexagon head stem, welding/welding, EN (DIN)        | 58 |
| DN 150-700 with ISO5211 actuator flange, welding/welding, EN (DIN) | 59 |
| DN 150-700 with angle gear, welding/welding, EN (DIN)              | 60 |

## Special purpose ball valves

|  |    |
|--|----|
| DN 20-200 Branching valve, welding/welding, EN (DIN)   | 61 |
| DN 20-150 Hot tapping valve, welding/welding, EN (DIN) | 62 |
| DN 150-200 Hot tapping valve, flange/welding, EN (DIN) | 63 |

## Gas ball valves, reduced bore

|   |    |
|---|----|
| DN 10-250 , welding/welding, EN (DIN)       | 64 |
| DN 300-600 , welding/welding, EN (DIN)      | 65 |
| DN 700-800 , welding/welding, EN (DIN)      | 66 |
| DN 10-250 , welding/welding, GOST           | 67 |
| DN 300-600 , welding/welding, GOST          | 68 |
| DN 700-800 , welding/welding, GOST          | 69 |
| DN 15-50 , female threads/welding, EN (DIN) | 70 |
| DN 15-50 , female threads/female threads    | 71 |
| DN 15-250 , flange/flange                   | 72 |
| DN 15-250 PN 25, flange/flange              | 73 |
| DN 300-600 , flange/flange                  | 74 |
| DN 300-600 PN 25, flange/flange             | 75 |
| DN 15-300 , flange/welding, EN (DIN)        | 76 |
| DN 15-300 PN 25, flange/welding, EN (DIN)   | 77 |

## Gas ball valves, reduced bore with gears and actuators

|   |    |
|---|----|
| DN 100-600 , welding/welding, EN (DIN) with manual gear | 78 |
| DN 700-800 , welding/welding, EN (DIN) with manual gear | 79 |
| DN 100-600 , flange/flange with manual gear             | 80 |
| DN 100-600 PN 25, flange/flange with manual gear        | 81 |

|  |     |
|--|-----|
| DN 700-800 , flange/flange with manual gear                                | 82  |
| DN 700-800 PN 25, flange/flange with manual gear                           | 83  |
| <b>Gas ball valves, full bore</b>  |     |
| DN 15-500 , welding/welding, EN (DIN)                                      | 84  |
| DN 600-800 , welding/welding, EN (DIN)                                     | 85  |
| DN 600-800 , welding/welding, GOST   | 86  |
| DN 15-500 , flange/flange  | 87  |
| DN 15-500 PN 25, flange/flange   | 88  |
| DN 600-800 , flange/flange   | 89  |
| DN 600-800 PN 25, flange/flange  | 90  |
| <b>Stainless steel ball valves, reduced bore</b>                           |     |
| DN 10-250 , welding/welding, EN (DIN)                                      | 91  |
| DN 10-100 , welding/welding, NS-norm                                       | 92  |
| DN 10-50 , female threads/welding, EN (DIN)                                | 93  |
| DN 10-50 , female threads/welding, NS-norm                                 | 94  |
| DN 10-50 , female threads/female threads                                   | 95  |
| DN 15-250 , flange/flange  | 96  |
| DN 15-250 PN 25, flange/flange   | 97  |
| <b>Stainless steel ball valves, reduced bore with gears and actuators</b>  |     |
| DN 100-250 , welding/welding, EN (DIN) with manual gear                    | 98  |
| DN 100-250 , flange/flange with manual gear                                | 99  |
| DN 100-250 PN 25, flange/flange with manual gear                           | 100 |
| <b>Condensate ball valves, reduced bore</b>                                |     |
| DN 15-250 , welding/welding, EN (DIN)                                      | 101 |
| DN 15-50 , female threads/welding, EN (DIN)                                | 102 |
| DN 15-50 , female threads/female threads                                   | 103 |
| DN 15-250 , flange/flange  | 104 |
| <b>Condensate ball valves, reduced bore with gears and actuators</b>       |     |
| DN 125-250 , welding/welding, EN (DIN) with manual gear                    | 105 |
| DN 125-250 , flange/flange with manual gear                                | 106 |
| DN 125-250 PN 25, flange/flange with manual gear                           | 107 |
| <b>Balancing valves, steel</b>   |     |
| DN 15-300 , welding/welding, EN (DIN)                                      | 108 |
| DN 15-300 , flange/flange  | 109 |
| DN 15-300 PN 25, flange/flange   | 110 |
| <b>Balancing valves, stainless steel</b>                                   |     |
| DN 15-250 , welding/welding, EN (DIN)                                      | 111 |
| DN 20-100 , welding/welding, NS-norm                                       | 112 |
| DN 15-250 , flange/flange  | 113 |
| DN 15-250 PN 25, flange/flange   | 114 |
| <b>Butterfly valves, full bore with gears and actuators</b>                |     |
| DN 300-800 $\Delta p = 16$ bar, welding/welding, EN (DIN) with manual gear | 115 |
| DN 300-800 $\Delta p = 25$ bar, welding/welding, EN (DIN) with manual gear | 116 |

|  |     |
|--|-----|
| DN 300-800 $\Delta p = 16$ bar, welding/welding, GOST with manual gear | 117 |
| DN 300-800 $\Delta p = 25$ bar, welding/welding, GOST with manual gear | 118 |
| DN 300-800 $\Delta p = 16$ bar, flange/flange with manual gear         | 119 |
| DN 300-800 $\Delta p = 25$ bar, flange/flange with manual gear         | 120 |

### Butterfly valves, reduced bore with gears and actuators

|   |     |
|---|-----|
| DN 900-1400 $\Delta p = 16$ bar, welding/welding, EN (DIN) with manual gear | 121 |
| DN 900-1400 $\Delta p = 25$ bar, welding/welding, EN (DIN) with manual gear | 122 |
| DN 900-1400 $\Delta p = 16$ bar, welding/welding, GOST with manual gear     | 123 |
| DN 900-1400 $\Delta p = 25$ bar, welding/welding, GOST with manual gear     | 124 |
| DN 900-1000 $\Delta p = 16$ bar, flange/flange with manual gear             | 125 |
| DN 900-1000 $\Delta p = 25$ bar, flange/flange with manual gear             | 126 |

### Butterfly valves, full bore

|   |     |
|---|-----|
| DN 300-800 $\Delta p = 16$ bar, welding/welding, EN (DIN) | 127 |
| DN 300-800 $\Delta p = 25$ bar, welding/welding, EN (DIN) | 128 |
| DN 300-800 $\Delta p = 16$ bar, welding/welding, GOST     | 129 |
| DN 300-800 $\Delta p = 25$ bar, welding/welding, GOST     | 130 |
| DN 300-800 $\Delta p = 16$ bar, flange/flange             | 131 |
| DN 300-800 $\Delta p = 25$ bar, flange/flange             | 132 |

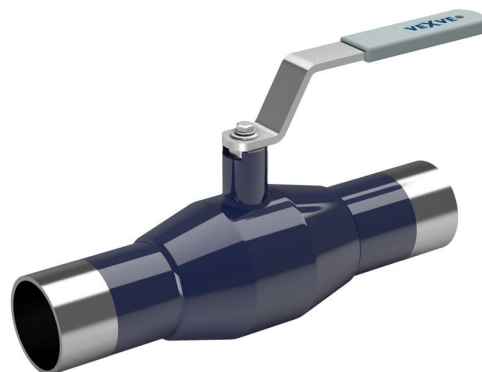
### Butterfly valves, reduced bore

|  |     |
|--|-----|
| DN 900-1200 $\Delta p = 16$ bar, welding/welding, EN (DIN) | 133 |
| DN 900-1200 $\Delta p = 25$ bar, welding/welding, EN (DIN) | 134 |
| DN 900-1200 $\Delta p = 16$ bar, welding/welding, GOST     | 135 |
| DN 900-1200 $\Delta p = 25$ bar, welding/welding, GOST     | 136 |
| DN 900-1000 $\Delta p = 16$ bar, flange/flange             | 137 |
| DN 900-1000 $\Delta p = 25$ bar, flange/flange             | 138 |

# Steel ball valves, reduced bore

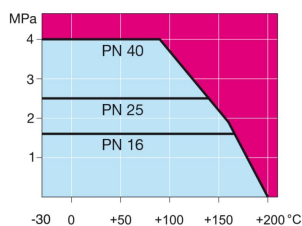
welding/welding, EN (DIN), DN 10-250

- Body: DN 10–500 Steel, P235GH (1.0345)  
 DN 600–800 Steel, P355 NL1 (1.0566)/ GP240GH (1.0619)
- Ball: DN 10–600 Stainless steel, X5CrNi18-10 (1.4301)  
 DN 700–800 Steel + stainless plating, ASTM A350 LF2+Ni
- Stem: Stainless steel, X8CrNiS18-9 (1.4305)
- Stem seals: FPM
- Ball seals: PTFE+C
- Operation: With zinc-plated steel handle  
 We recommend manual gear operation for sizes DN 200 and larger



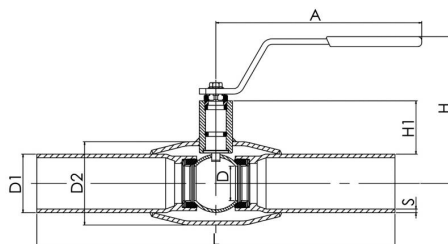
## Operating conditions

-30°C - +200°C  
 Below 0 °C contact manufacturer

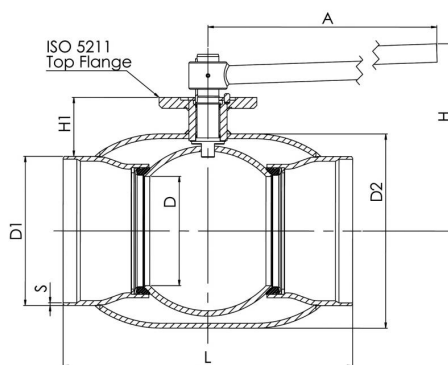


Not for steam

DN 10 - 150



DN 200 - 250

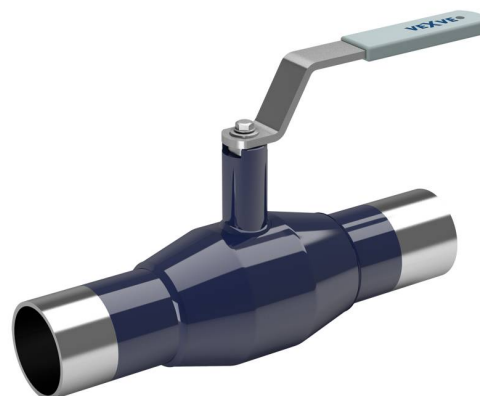


| Product no. Vexve | DN  | PN | A     | D   | D1    | D2    | H   | H1  | L   | S   | kg   |
|-------------------|-----|----|-------|-----|-------|-------|-----|-----|-----|-----|------|
| 100010            | 10  | 40 | 145   | 10  | 17.2  | 33.7  | 98  | 22  | 230 | 2   | 0.6  |
| 100015            | 15  | 40 | 145   | 10  | 21.3  | 33.7  | 98  | 22  | 230 | 2   | 0.6  |
| 100020            | 20  | 40 | 145   | 15  | 26.9  | 42.4  | 103 | 23  | 230 | 2.3 | 0.8  |
| 100025            | 25  | 40 | 145   | 20  | 33.7  | 48.3  | 118 | 34  | 230 | 2.6 | 1    |
| 100032            | 32  | 40 | 145   | 25  | 42.4  | 60.3  | 121 | 33  | 260 | 2.6 | 1.4  |
| 100040            | 40  | 40 | 188   | 32  | 48.3  | 70    | 120 | 43  | 260 | 2.6 | 1.8  |
| 100050            | 50  | 40 | 188   | 40  | 60.3  | 88.9  | 127 | 44  | 300 | 2.9 | 2.6  |
| 100065            | 65  | 25 | 277.5 | 50  | 76.1  | 101.6 | 159 | 62  | 300 | 2.9 | 4    |
| 100080            | 80  | 25 | 277.5 | 65  | 88.9  | 121   | 171 | 68  | 300 | 3.2 | 5.3  |
| 100100            | 100 | 25 | 278.5 | 80  | 114.3 | 146   | 218 | 101 | 325 | 3.6 | 8.3  |
| 100125            | 125 | 25 | 400   | 100 | 139.7 | 177.8 | 252 | 101 | 325 | 4   | 13.4 |
| 100150            | 150 | 25 | 600   | 125 | 168.3 | 219.1 | 272 | 107 | 350 | 4.5 | 18   |
| 100200            | 200 | 25 | 870   | 150 | 219.1 | 273   | 280 | 92  | 400 | 4.5 | 39   |
| 100250            | 250 | 25 | 1200  | 200 | 273   | 355.6 | 350 | 108 | 530 | 5   | 74   |

# Steel ball valves, reduced bore

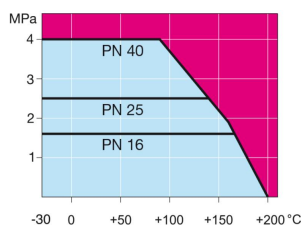
welding/welding, EN (DIN), DN 10-50, high

|             |   |
|-------------|---|
| Body:       | DN 10–500 Steel, P235GH (1.0345)<br>DN 600–800 Steel, P355 NL1 (1.0566)/ GP240GH (1.0619)                 |
| Ball:       | DN 10–600 Stainless steel, X5CrNi18-10 (1.4301)<br>DN 700–800 Steel + stainless plating, ASTM A350 LF2+Ni |
| Stem:       | Stainless steel, X8CrNiS18-9 (1.4305)   |
| Stem seals: | FPM   |
| Ball seals: | PTFE+C  |
| Operation:  | With zinc-plated steel handle   |

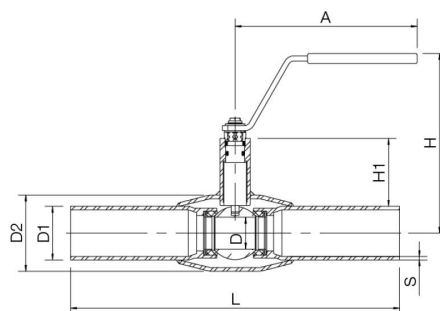


## Operating conditions

-30°C - +200°C  
Below 0 °C contact manufacturer



Not for steam



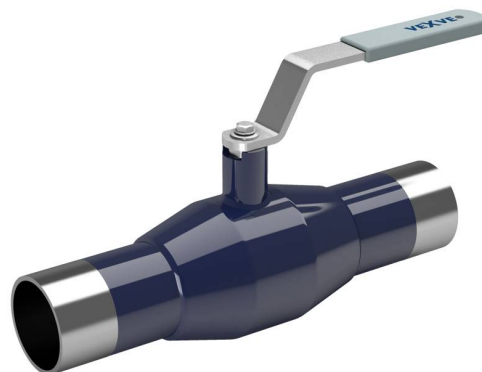
| Product no. Vexve | DN | PN | A   | D  | D1   | D2   | H   | H1 | L   | kg  |
|-------------------|----|----|-----|----|------|------|-----|----|-----|-----|
| 100010/H          | 10 | 40 | 145 | 10 | 17.2 | 33.7 | 128 | 52 | 230 | 0.7 |
| 100015/H          | 15 | 40 | 145 | 10 | 21.3 | 33.7 | 128 | 52 | 230 | 0.7 |
| 100020/H          | 20 | 40 | 145 | 15 | 26.9 | 42.4 | 133 | 53 | 230 | 1   |
| 100025/H          | 25 | 40 | 145 | 20 | 33.7 | 48.3 | 139 | 55 | 230 | 1.1 |
| 100032/H          | 32 | 40 | 145 | 25 | 42.4 | 60.3 | 142 | 54 | 260 | 1.4 |
| 100040/H          | 40 | 40 | 188 | 32 | 48.3 | 70   | 139 | 62 | 260 | 1.9 |
| 100050/H          | 50 | 40 | 188 | 40 | 60.3 | 88.9 | 146 | 63 | 300 | 2.7 |



# Steel ball valves, reduced bore

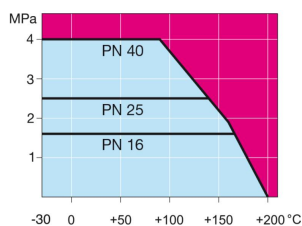
welding/welding, EN (DIN), DN 20-200, strong

|             |   |
|-------------|---|
| Body:       | DN 10–500 Steel, P235GH (1.0345)<br>DN 600–800 Steel, P355 NL1 (1.0566)/ GP240GH (1.0619)                 |
| Ball:       | DN 10–600 Stainless steel, X5CrNi18-10 (1.4301)<br>DN 700–800 Steel + stainless plating, ASTM A350 LF2+Ni |
| Stem:       | Stainless steel, X8CrNiS18-9 (1.4305)   |
| Stem seals: | FPM   |
| Ball seals: | PTFE+C  |
| Operation:  | With zinc-plated steel handle<br>We recommend manual gear operation for sizes DN 200 and larger           |



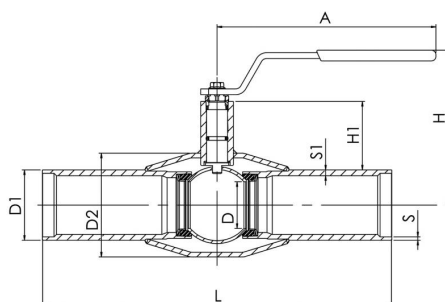
## Operating conditions

-30°C - +200°C  
Below 0 °C contact manufacturer

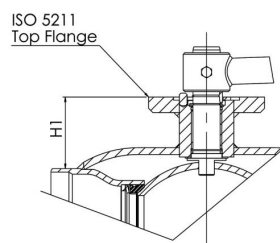


Not for steam

DN 15 - 150



DN 200



| Product no. Vexve | DN  | PN | A   | D   | D1    | D2    | H   | H1  | L   | S   | S1  | kg   |
|-------------------|-----|----|-----|-----|-------|-------|-----|-----|-----|-----|-----|------|
| 100020/S          | 20  | 40 | 145 | 20  | 26.9  | 48.3  | 118 | 37  | 230 | 2.6 | 4.5 | 1.4  |
| 100025/S          | 25  | 40 | 145 | 20  | 33.7  | 48.3  | 118 | 34  | 230 | 2.6 | 4.5 | 1.4  |
| 100032/S          | 32  | 40 | 145 | 25  | 42.4  | 60.3  | 120 | 33  | 260 | 2.6 | 3.6 | 1.7  |
| 100040/S          | 40  | 40 | 190 | 32  | 48.3  | 70    | 122 | 43  | 260 | 2.6 | 4.5 | 2.5  |
| 100050/S          | 50  | 40 | 190 | 40  | 60.3  | 88.9  | 128 | 44  | 300 | 2.9 | 4   | 3.5  |
| 100065/S          | 65  | 25 | 280 | 50  | 76.1  | 101.6 | 159 | 62  | 300 | 2.9 | 5   | 5.1  |
| 100080/S          | 80  | 25 | 280 | 65  | 88.9  | 121   | 171 | 68  | 300 | 2.9 | 5.6 | 6.6  |
| 100100/S          | 100 | 25 | 280 | 80  | 114.3 | 146   | 216 | 101 | 325 | 3.6 | 6.3 | 10.7 |
| 100125/S          | 125 | 25 | 400 | 100 | 139.7 | 177.8 | 253 | 101 | 325 | 4   | 6.3 | 16   |
| 100150/S          | 150 | 25 | 400 | 125 | 168.3 | 219.1 | 272 | 107 | 350 | 4.1 | 7.1 | 24   |
| 100200/S          | 200 | 25 | 870 | 150 | 219.1 | 273   | 281 | 92  | 400 | 4.5 | 7.1 | 43   |

# Steel ball valves, reduced bore

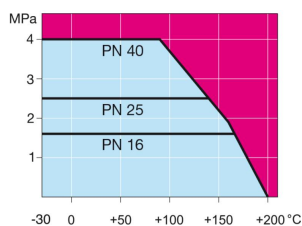
welding/welding, EN (DIN), DN 300-600

- Body: DN 10–500 Steel, P235GH (1.0345)  
 DN 600–800 Steel, P355 NL1 (1.0566)/ GP240GH (1.0619)
- Ball: DN 10–600 Stainless steel, X5CrNi18-10 (1.4301)  
 DN 700–800 Steel + stainless plating, ASTM A350 LF2+Ni
- Stem: Stainless steel, X8CrNiS18-9 (1.4305)
- Stem seals: FPM
- Ball seals: PTFE+C
- Operation: Valves are available with manual gear or with an electric or hydraulic actuator: [www.vexve.com/en/actuators](http://www.vexve.com/en/actuators)



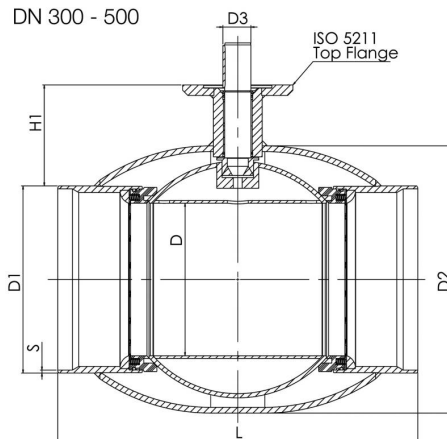
## Operating conditions

-30°C - +200°C  
 Below 0 °C contact manufacturer

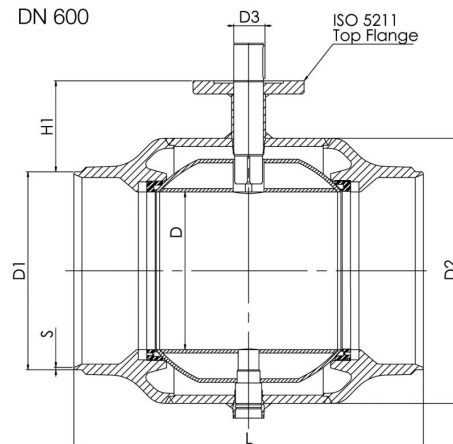


Not for steam

DN 300 - 500



DN 600

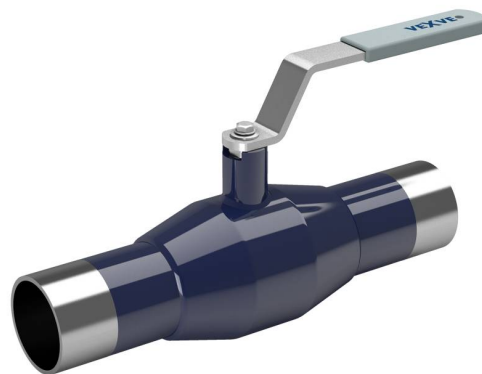


| Product no. Vexve | DN  | PN | D   | D1    | D2  | D3 | H1  | L    | S   | ISO 5211 | kg  |
|-------------------|-----|----|-----|-------|-----|----|-----|------|-----|----------|-----|
| 100300            | 300 | 25 | 250 | 323.9 | 457 | 50 | 133 | 550  | 5.6 | F16      | 110 |
| 100350            | 350 | 25 | 290 | 355.6 | 508 | 50 | 192 | 686  | 5.6 | F16      | 170 |
| 100400            | 400 | 25 | 340 | 406.4 | 610 | 70 | 242 | 762  | 7   | F25      | 250 |
| 100500            | 500 | 25 | 390 | 508   | 660 | 90 | 259 | 914  | 7   | F30      | 400 |
| 100600            | 600 | 25 | 489 | 610   | 813 | 90 | 274 | 1065 | 7.1 | F30      | 997 |

# Steel ball valves, reduced bore

welding/welding, GOST, DN 10-250

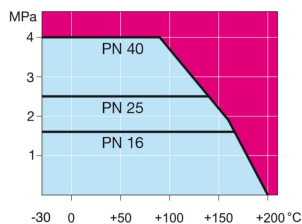
- Body: DN 10–500 Steel, P235GH (1.0345)  
 DN 600–800 Steel, P355 NL1 (1.0566)/ GP240GH (1.0619)
- Ball: DN 10–600 Stainless steel, X5CrNi18-10 (1.4301)  
 DN 700–800 Steel + stainless plating, ASTM A350 LF2+Ni
- Stem: Stainless steel, X8CrNiS18-9 (1.4305)
- Stem seals: FPM
- Ball seals: PTFE+C
- Operation: With zinc-plated steel handle  
 We recommend manual gear operation for sizes DN 200 and larger



## Operating conditions

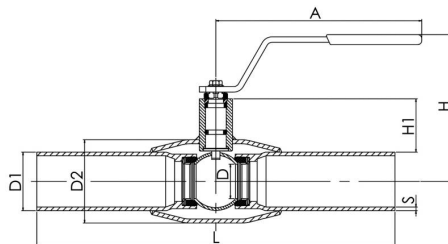
-30°C - +200°C

Below 0 °C contact manufacturer

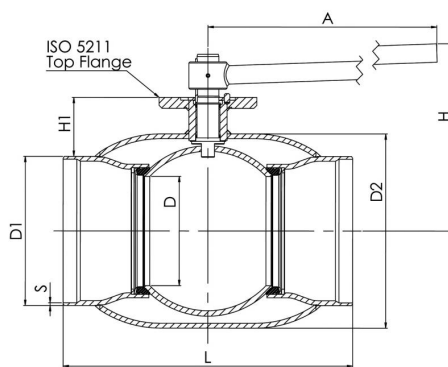


Not for steam

DN 10 - 150



DN 200 - 250



| Product no. Vexve | DN  | PN | A     | D   | D1  | D2    | H   | H1  | L   | S   | kg   |
|-------------------|-----|----|-------|-----|-----|-------|-----|-----|-----|-----|------|
| 100010/GS         | 10  | 40 | 145   | 10  | 17  | 33.7  | 98  | 22  | 230 | 2   | 0.6  |
| 100015/GS         | 15  | 40 | 145   | 10  | 18  | 33.7  | 98  | 22  | 230 | 2   | 0.6  |
| 100020/GS         | 20  | 40 | 145   | 15  | 25  | 42.4  | 103 | 23  | 230 | 2.3 | 0.8  |
| 100025/GS         | 25  | 40 | 145   | 20  | 32  | 48.3  | 118 | 34  | 230 | 2.6 | 1    |
| 100032/GS         | 32  | 40 | 145   | 25  | 38  | 60.3  | 121 | 33  | 260 | 2.6 | 1.4  |
| 100040/GS         | 40  | 40 | 188   | 32  | 45  | 70    | 120 | 43  | 260 | 2.6 | 1.8  |
| 100050/GS         | 50  | 40 | 188   | 40  | 57  | 88.9  | 127 | 44  | 300 | 2.9 | 2.6  |
| 100065/GS         | 65  | 25 | 277.5 | 50  | 76  | 101.6 | 159 | 62  | 300 | 2.9 | 4    |
| 100080/GS         | 80  | 25 | 277.5 | 65  | 89  | 121   | 171 | 68  | 300 | 3.2 | 5.3  |
| 100100/GS         | 100 | 25 | 278.5 | 80  | 108 | 146   | 218 | 101 | 325 | 3.6 | 8.3  |
| 100125/GS         | 125 | 25 | 400   | 100 | 133 | 177.8 | 252 | 101 | 325 | 4   | 13.4 |
| 100150/GS         | 150 | 25 | 600   | 125 | 159 | 219.1 | 272 | 107 | 350 | 4.5 | 18   |
| 100200/GS         | 200 | 25 | 870   | 150 | 219 | 273   | 280 | 92  | 400 | 5   | 39   |
| 100250/GS         | 250 | 25 | 1200  | 200 | 273 | 355.6 | 350 | 108 | 530 | 6   | 74   |

# Steel ball valves, reduced bore

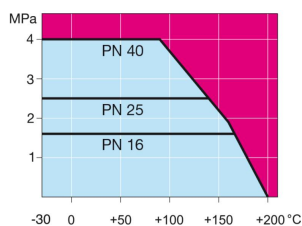
welding/welding, GOST, DN 300-600

- Body: DN 10–500 Steel, P235GH (1.0345)  
 DN 600–800 Steel, P355 NL1 (1.0566)/ GP240GH (1.0619)
- Ball: DN 10–600 Stainless steel, X5CrNi18-10 (1.4301)  
 DN 700–800 Steel + stainless plating, ASTM A350 LF2+Ni
- Stem: Stainless steel, X8CrNiS18-9 (1.4305)
- Stem seals: FPM
- Ball seals: PTFE+C
- Operation: Valves are available with manual gear or with an electric or hydraulic actuator: [www.vexve.com/en/actuators](http://www.vexve.com/en/actuators)

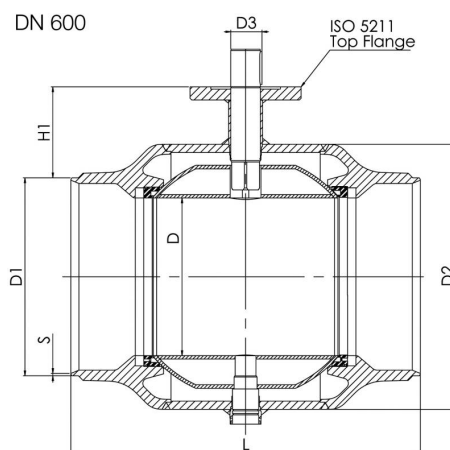
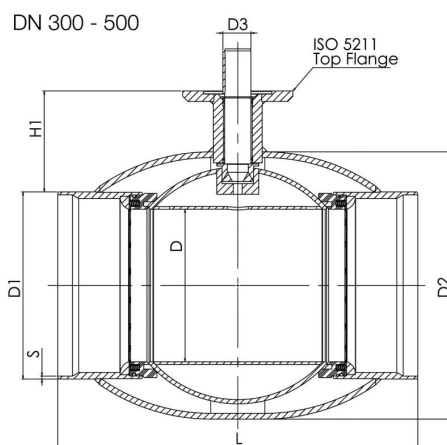


## Operating conditions

-30°C - +200°C  
 Below 0 °C contact manufacturer



Not for steam



| Product no. Vexve | DN  | PN | D   | D1  | D2  | D3 | H1  | L    | S   | ISO 5211 | kg  |
|-------------------|-----|----|-----|-----|-----|----|-----|------|-----|----------|-----|
| 100300/GS         | 300 | 25 | 250 | 325 | 457 | 50 | 133 | 550  | 7   | F16      | 110 |
| 100350/GS         | 350 | 25 | 290 | 377 | 508 | 50 | 181 | 686  | 5.6 | F16      | 170 |
| 100400/GS         | 400 | 25 | 340 | 426 | 610 | 70 | 232 | 762  | 7   | F25      | 250 |
| 100500/GS         | 500 | 25 | 390 | 530 | 660 | 90 | 248 | 914  | 7   | F30      | 400 |
| 100600/GS         | 600 | 25 | 489 | 630 | 813 | 90 | 265 | 1065 | 11  | F30      | 997 |

# Steel ball valves, reduced bore with gears and actuators

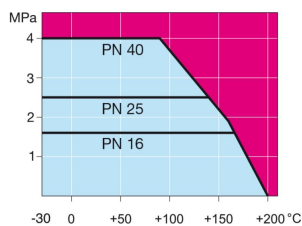
welding/welding, EN (DIN), DN 100-600, with manual gear

Body: DN 10–500 Steel, P235GH (1.0345)  
 DN 600–800 Steel, P355 NL1 (1.0566)/ GP240GH (1.0619)  
 Ball: DN 10–600 Stainless steel, X5CrNi18-10 (1.4301)  
 DN 700–800 Steel + stainless plating, ASTM A350 LF2+Ni  
 Stem: Stainless steel, X8CrNiS18-9 (1.4305)  
 Stem seals: FPM  
 Ball seals: PTFE+C  
 Operation: Valve is equipped with manual gear.  
 For type and features of manual gear please refer to:  
[www.vexve.com/en/actuators](http://www.vexve.com/en/actuators).

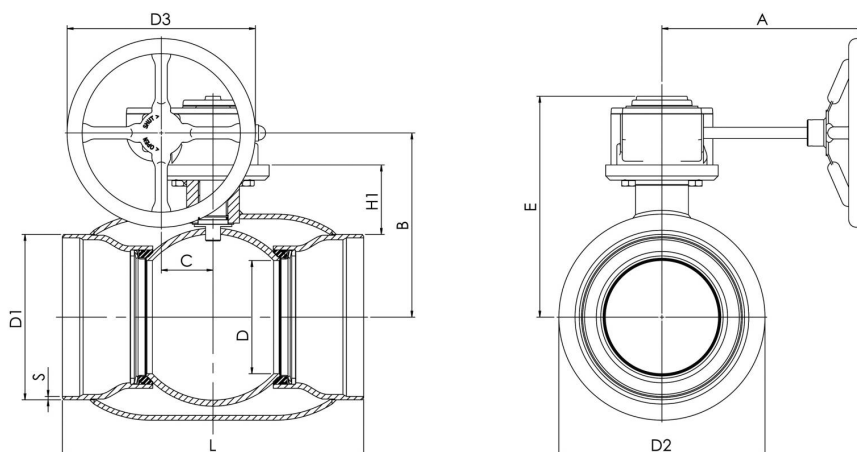


## Operating conditions

-30°C - +200°C  
 Below 0 °C contact manufacturer



Not for steam



| Product no. Vexve | DN  | PN | A   | B   | C   | D   | D1    | D2    | D3  | E   | H   | L    | S   | kg   |
|-------------------|-----|----|-----|-----|-----|-----|-------|-------|-----|-----|-----|------|-----|------|
| 104100            | 100 | 25 | 186 | 196 | 53  | 80  | 114.3 | 146   | 125 | 239 | 105 | 325  | 3.6 | 18   |
| 104125            | 125 | 25 | 224 | 216 | 53  | 100 | 139.7 | 177.8 | 200 | 259 | 112 | 325  | 4   | 20   |
| 104150            | 150 | 25 | 224 | 236 | 53  | 125 | 168.3 | 219.1 | 200 | 279 | 118 | 350  | 4.1 | 25   |
| 104200            | 200 | 25 | 268 | 244 | 69  | 150 | 219.1 | 273   | 250 | 293 | 92  | 400  | 4.5 | 49   |
| 104250            | 250 | 25 | 301 | 294 | 97  | 200 | 273   | 355.6 | 300 | 345 | 108 | 530  | 5   | 94   |
| 104300            | 300 | 25 | 363 | 343 | 117 | 250 | 323.9 | 457   | 500 | 412 | 132 | 550  | 5.6 | 152  |
| 104350            | 350 | 25 | 363 | 418 | 117 | 290 | 355.6 | 508   | 500 | 487 | 192 | 686  | 5.6 | 212  |
| 104400            | 400 | 25 | 444 | 500 | 138 | 340 | 406.4 | 610   | 500 | 573 | 242 | 762  | 7   | 293  |
| 104500            | 500 | 25 | 475 | 577 | 180 | 390 | 508   | 660   | 500 | 648 | 259 | 914  | 7   | 467  |
| 104600            | 600 | 25 | 475 | 644 | 180 | 489 | 610   | 813   | 500 | 715 | 274 | 1065 | 7.1 | 1025 |

# Steel ball valves, reduced bore with gears and actuators

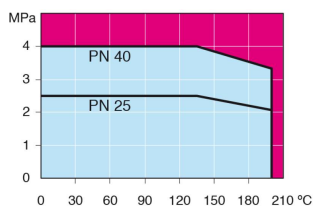
welding/welding, EN (DIN), DN 700-800, with manual gear

Body: DN 10–500 Steel, P235GH (1.0345)  
 DN 600–800 Steel, P355 NL1 (1.0566)/ GP240GH (1.0619)  
 Ball: DN 10–600 Stainless steel, X5CrNi18-10 (1.4301)  
 DN 700–800 Steel + stainless plating, ASTM A350 LF2+Ni  
 Stem: Stainless steel, X8CrNiS18-9 (1.4305)  
 Stem seals: FPM  
 Ball seals: PTFE+C  
 Equipment: lifting lugs, drain valve, mounting stand  
 Operation: Valve is equipped with manual gear.  
 For type and features of manual gear please refer to:  
[www.vexve.com/en/actuators](http://www.vexve.com/en/actuators).



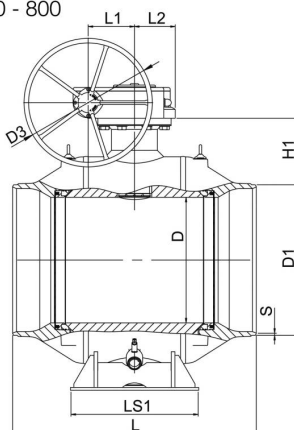
## Operating conditions

-30°C - +200°C  
 Below 0 °C contact manufacturer

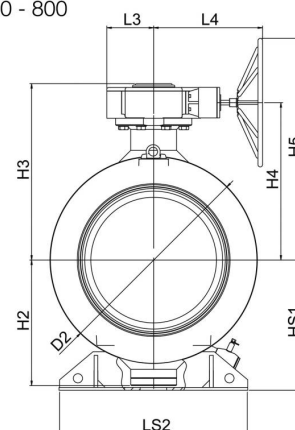


Not for steam

DN 700 - 800



DN 700 - 800



| Product no. Vexve | DN  | PN | D   | D1  | D2   | D3  | H1  | H2  | H3  | H4  | H5   | HS1 | L    | L1  | L2  | L3  | L4  | LS1 | LS2  | S   | kg   |
|-------------------|-----|----|-----|-----|------|-----|-----|-----|-----|-----|------|-----|------|-----|-----|-----|-----|-----|------|-----|------|
| 104700            | 700 | 25 | 589 | 711 | 965  | 700 | 336 | 592 | 881 | 778 | 1128 | 616 | 1205 | 253 | 222 | 255 | 593 | 560 | 965  | 8   | 2700 |
| 104800            | 800 | 25 | 684 | 813 | 1125 | 700 | 365 | 684 | 961 | 858 | 1208 | 709 | 1330 | 253 | 222 | 255 | 593 | 700 | 1028 | 8.8 | 4050 |

Available also PN 40

# Steel ball valves, reduced bore with gears and actuators

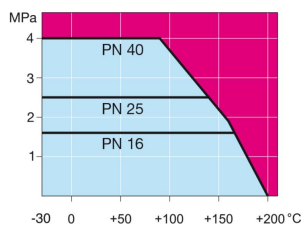
welding/welding, GOST, DN 100-600, with manual gear

Body: DN 10–500 Steel, P235GH (1.0345)  
 DN 600–800 Steel, P355 NL1 (1.0566)/ GP240GH (1.0619)  
 Ball: DN 10–600 Stainless steel, X5CrNi18-10 (1.4301)  
 DN 700–800 Steel + stainless plating, ASTM A350 LF2+Ni  
 Stem: Stainless steel, X8CrNiS18-9 (1.4305)  
 Stem seals: FPM  
 Ball seals: PTFE+C  
 Operation: Valve is equipped with manual gear.  
 For type and features of manual gear please refer to:  
[www.vexve.com/en/actuators](http://www.vexve.com/en/actuators).

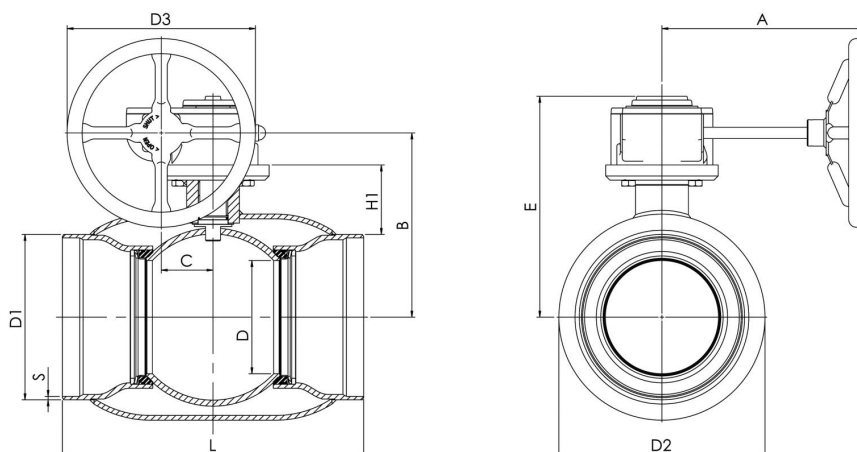


## Operating conditions

-30°C - +200°C  
 Below 0 °C contact manufacturer



Not for steam



| Product no. Vexve | DN  | PN | A   | B   | C   | D   | D1  | D2    | D3  | E   | H1  | L    | S   | kg   |
|-------------------|-----|----|-----|-----|-----|-----|-----|-------|-----|-----|-----|------|-----|------|
| 104100/GS         | 100 | 25 | 186 | 196 | 53  | 80  | 108 | 146   | 125 | 239 | 105 | 325  | 3.6 | 18   |
| 104125/GS         | 125 | 25 | 224 | 216 | 53  | 100 | 133 | 177.8 | 200 | 258 | 112 | 325  | 4   | 20   |
| 104150/GS         | 150 | 25 | 224 | 236 | 53  | 125 | 159 | 219.1 | 200 | 279 | 118 | 350  | 4.5 | 25   |
| 104200/GS         | 200 | 25 | 268 | 244 | 69  | 150 | 219 | 273   | 250 | 293 | 92  | 400  | 5   | 49   |
| 104250/GS         | 250 | 25 | 301 | 294 | 97  | 200 | 273 | 355.6 | 300 | 345 | 108 | 530  | 6   | 94   |
| 104300/GS         | 300 | 25 | 363 | 343 | 117 | 250 | 325 | 457   | 500 | 412 | 132 | 550  | 7   | 152  |
| 104350/GS         | 350 | 25 | 363 | 418 | 117 | 290 | 377 | 508   | 500 | 487 | 192 | 686  | 5.6 | 212  |
| 104400/GS         | 400 | 25 | 440 | 500 | 138 | 340 | 426 | 610   | 500 | 573 | 342 | 762  | 7   | 293  |
| 104500/GS         | 500 | 25 | 471 | 576 | 180 | 390 | 530 | 660   | 500 | 648 | 259 | 914  | 7   | 467  |
| 104600/GS         | 600 | 25 | 475 | 475 | 180 | 489 | 630 | 813   | 500 | 714 | 274 | 1065 | 11  | 1025 |

# Steel ball valves, reduced bore with gears and actuators

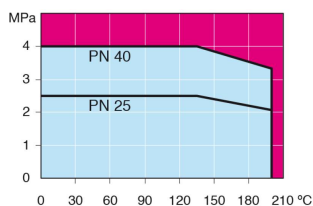
welding/welding, GOST, DN 700-800, with manual gear

Body: DN 10–500 Steel, P235GH (1.0345)  
 DN 600–800 Steel, P355 NL1 (1.0566)/ GP240GH (1.0619)  
 Ball: DN 10–600 Stainless steel, X5CrNi18-10 (1.4301)  
 DN 700–800 Steel + stainless plating, ASTM A350 LF2+Ni  
 Stem: Stainless steel, X8CrNiS18-9 (1.4305)  
 Stem seals: FPM  
 Ball seals: PTFE+C  
 Equipment: lifting lugs, drain valve, mounting stand  
 Operation: Valve is equipped with manual gear.  
 For type and features of manual gear please refer to:  
[www.vexve.com/en/actuators](http://www.vexve.com/en/actuators).



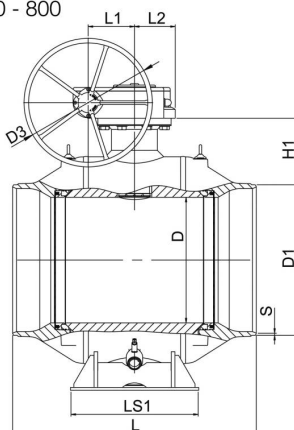
## Operating conditions

-30°C - +200°C  
 Below 0 °C contact manufacturer

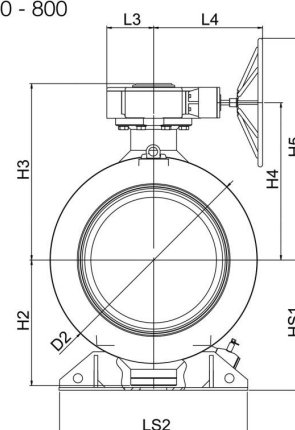


Not for steam

DN 700 - 800



DN 700 - 800



| Product no. Vexve | DN  | PN | D   | D1  | D2   | D3  | H1  | H2  | H3  | H4  | H5   | HS1 | L    | L1  | L2  | L3  | L4  | LS1 | LS2  | S  | kg   |
|-------------------|-----|----|-----|-----|------|-----|-----|-----|-----|-----|------|-----|------|-----|-----|-----|-----|-----|------|----|------|
| 104700/GS         | 700 | 25 | 589 | 720 | 965  | 700 | 332 | 592 | 881 | 778 | 1128 | 616 | 1205 | 253 | 222 | 255 | 593 | 560 | 965  | 12 | 2700 |
| 104800/GS         | 800 | 25 | 684 | 820 | 1125 | 700 | 363 | 684 | 961 | 858 | 1208 | 709 | 1330 | 253 | 222 | 255 | 593 | 700 | 1028 | 12 | 4050 |

Available also PN 40



22.11.2016  
Created by Vexve Oy



---

**Vexve Oy**

Pajakatu 11  
FI-38200 Sastamala  
Finland

Tel. +358 10 734 0800  
Fax +358 10 734 0839

[vexve.customer@vexve.com](mailto:vexve.customer@vexve.com)

Riihenkalliontie 10  
FI-23800 Laitila  
Finland

[www.vexve.com](http://www.vexve.com)

