

Hi-Torque Command

0.014" Peripheral Guide Wire

Ordering Information

DESCRIPTION	STOCK NUMBER	WIRE LENGTH (CM)	WIRE SIZE (INCH)	TIP DIAMETER (INCH)	TIP STYLE	TIP STIFFNESS (GRAM)
HT Command	2078172	190	0.014	0.014	Shapeable	2.8
HT Command	2078173	300	0.014	0.014	Shapeable	2.8
HT Command ES	2078174	190	0.014	0.014	Shapeable	3.5
HT Command ES	2078175	300	0.014	0.014	Shapeable	3.5

HT Command is a trademark of the Abbott Group of Companies.
HT Pilot is a trademark of the Abbott Group of Companies.

Contact your local representative for more information

Photo(s) on file at Abbott Vascular. All drawings are artist's representations only and should not be considered as an engineering drawing or photograph. Products intended for use by or under the direction of a physician. Prior to use, it is important to read the package insert thoroughly for instructions for use, warnings and potential complications associated with use of this device. Information contained herein is for distribution for Europe, Middle East and Africa ONLY. Please check the regulatory status of the device before distribution in areas where CE marking is not the regulation in force.

For more information, visit our website at abbottvascular.com
© 2012 Abbott. All rights reserved. 2-EH-1-2635-01 09/2012



**Endovascular
Commitment**



Hi-Torque Command

0.014" Peripheral Guide Wire

Stainless steel for
excellent torque
and support

Nitinol for superb
flexibility and durability

A new generation of
hybrid workhorse
guide wire

An optimal material fusion
for BTK success



Hi-Torque Command

A new approach in guide wire construction

.014"

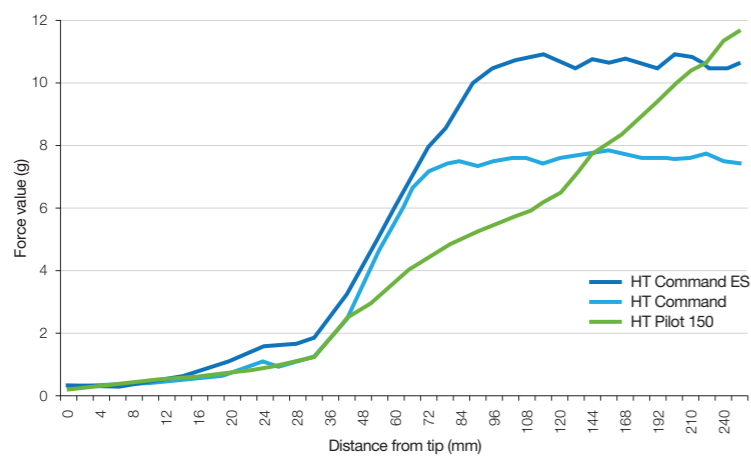
Hybrid workhorse guide wire, specifically designed for optimal BTK performance

Dual metal technology, combining the advantages of **Stainless Steel** and **Nitinol**, provides the optimal balance of control and ease of navigation for BTK procedures.

Stainless steel body for excellent torque and support

- Maintains 1-1 torque over the length of the wire
- Handling and control improved by **hydrophobic** coating
- Two different support levels: HT Command, HT Command ES (for extra support)

HT Command Support Curve vs Pilot 150



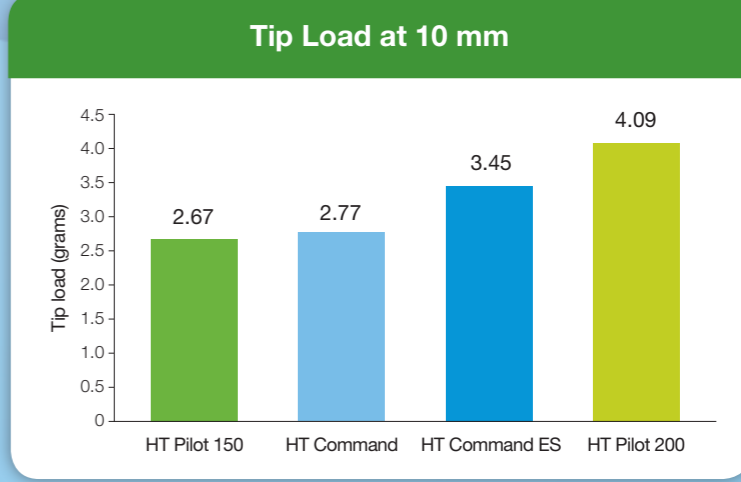
Source: Data on file at Abbott Vascular.

Transitionless weld for uniform support without stress points

- Ensures smooth device compatibility

Distal Nitinol end for superb flexibility and tip durability

- Two different levels of tip load:
 - 2.8 g
 - 3.5 g
- Less traumatic and easier to navigate in tortuous anatomies
- **Hydrophilic** coating on a radiopaque polymer cover for improved lubricity, gliding and visibility



Source: Data on file at Abbott Vascular.

Nitinol core with parabolic grind for excellent torque and control

3 cm distal platinum radiopaque coils

Cold-worked flattened superelastic shapeable nitinol tip for improved tip durability

