

GravityZone Elite Suite

An Integrated Endpoint Protection, Risk Management, and Attack Forensics Platform

GravityZone Elite safeguards your organization from the full spectrum of sophisticated cyber threats. With more than 30 machine learning-driven security technologies, GravityZone provides multiple layers of defense that consistently outperforms conventional endpoint security, as proven in independent tests. A single-agent, single-console platform for physical, virtual, mobile and cloud-based endpoints and email, GravityZone Elite minimizes management overhead while giving you ubiquitous visibility and control.

Next-Generation Endpoint Security, Evolved

WORLD'S STRONGEST PREVENTION

Automatically stop 99% of attacks with #1 ranked prevention that combines over 30 technologies, such as tunable machine learning, sandbox analyzer, anti-exploit and behavioral analysis



ATTACK FORENSICS AND VISUALIZATION

Gain insight into your threat environment and perform forensic analysis by zeroing in on attacks specifically aimed at your organization. Visualize the attack kill chain and perform required remediation

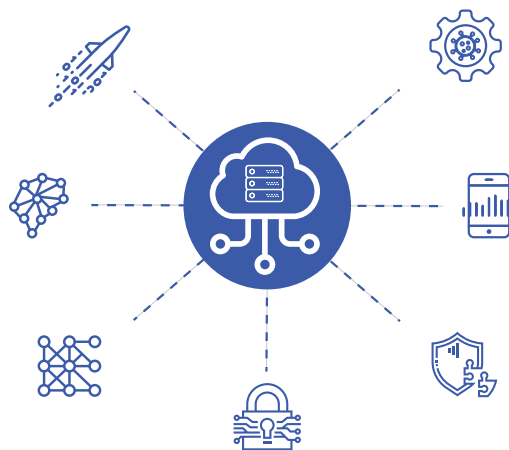
ENDPOINT HARDENING AND RISK MANAGEMENT

Strengthen security posture with integrated device- and application control, patching, encryption and other technologies. Leverage integrated Risk Management and Analytics to continuously assess, prioritize, and address misconfigurations and vulnerabilities

HyperDetect™ tunable machine learning blocks file-less attacks

Sandbox Analyzer enhances detection of targeted attacks

Anti-Exploit, Process Control, and Network Defense maximize efficacy



NEW

Attack Forensics provides visibility and insight into attacks

NEW

Risk Management and Analytics helps control risk and reduce attack surface

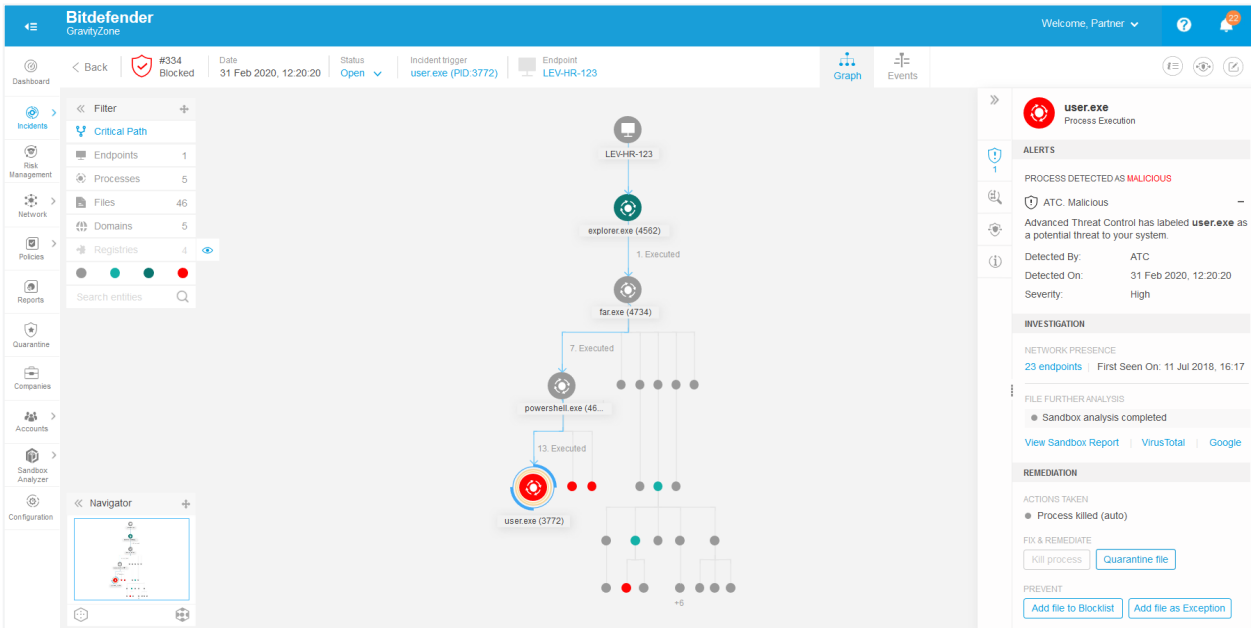
Patch Management, Encryption, and Email add-ons further strengthen security posture

Web-Threat Protection, Application- and Device Control harden endpoints

Attack Forensics and Visualization

Enhance visibility into organization-specific threats. Understand the broader context of attacks on your endpoints with root-cause analysis and attack kill-chain visualization. Remediate threats detected by GravityZone prevention technologies (Antimalware, Sandbox, and Network-Attack Defense).

Analyze how an attack was engineered and zero in on its specific stages, machines, processes, files, web domains and other elements. Enhance GravityZone’s automatic remediation capabilities with manual action, such as remotely running PowerShell commands on the infected machine, killing a process, quarantining a file or adding a file to a shared blocklist.

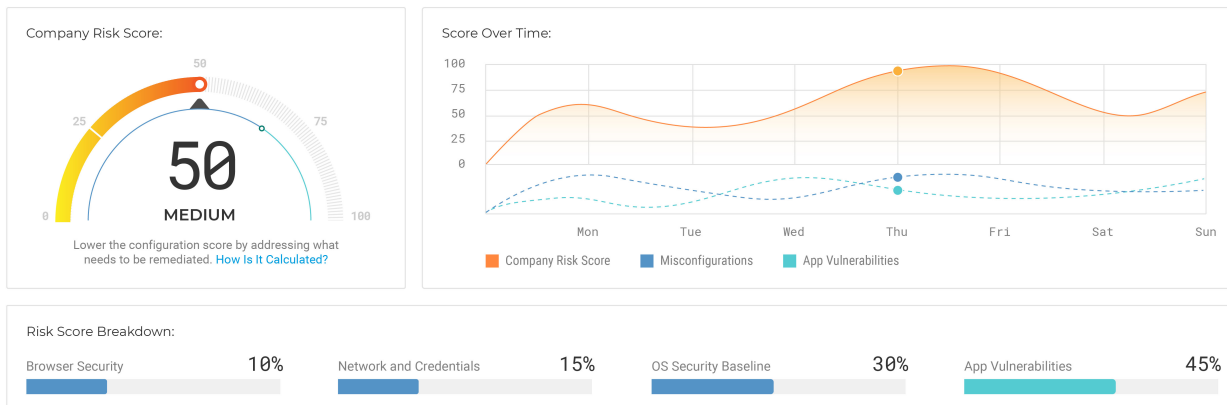


GravityZone Elite Attack Forensics and Visualization: Attack Tree

Endpoint Risk Management and Analytics

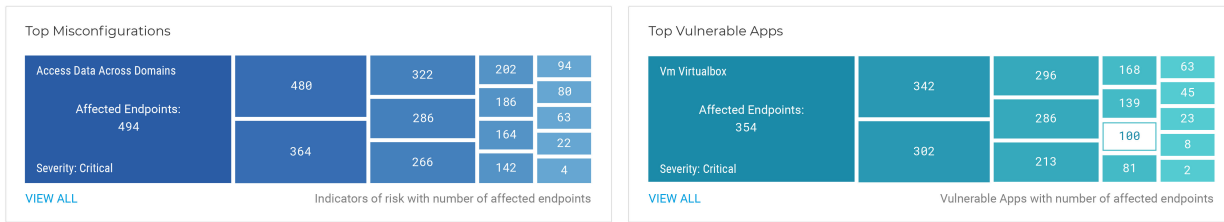
Actively reduce your organization’s attack surface by continuously assessing, prioritizing, and addressing endpoint risk coming from misconfigurations and application vulnerabilities.

- View your overall Company Risk Score and understand how various misconfigurations and application vulnerabilities contribute to it:



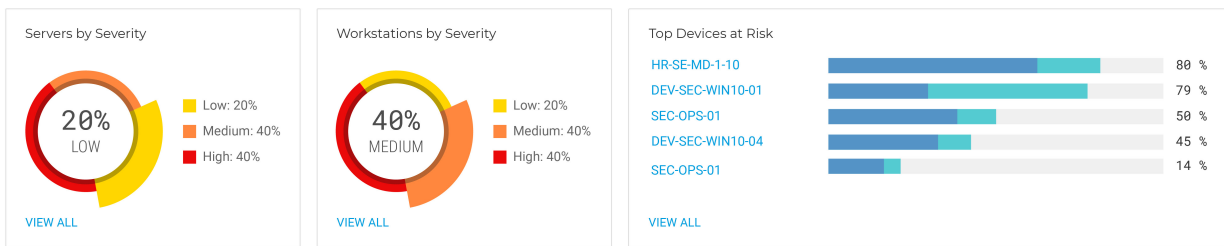
GravityZone Elite Risk Management Dashboard: Company Risk Score and Its Components

- Assess prioritized misconfigurations and application vulnerabilities across your organization's endpoint estate:



GravityZone Elite Risk Management Dashboard: Misconfigurations and Vulnerable Apps

- Get a risk snapshot for servers and end-user devices, and review the most-exposed endpoints:



GravityZone Elite Risk Management Dashboard: Risk Severity by Endpoint Type

- Leverage convenient filtering options to search through indicators of risk and zero in on specific misconfigurations, vulnerable applications, or individual devices. Mitigate risk by taking recommended actions:

The screenshot shows the Bitdefender GravityZone Security Risks dashboard. The main view is 'Misconfigurations' with a table listing various risks. A detailed view for 'Access Data Across Domains' is shown on the right, indicating a High (90%) severity, 44 affected devices, and a recommendation to enable the policy to reduce the risk score by 7%.

Misconfigurations	Severity	No. Devices	Type
<input type="checkbox"/> Access Data Across Domains	High (90%)	24	Browser Security
<input type="checkbox"/> Install ActiveX	Medium (50%)	80	Browser Security
<input type="checkbox"/> Security Zones add / delete sites	Low (20%)	14	Browser Security
<input type="checkbox"/> Anonymous Users Permissions	High (90%)	40	Network and Credential
<input type="checkbox"/> Client digitally sign communications	High (90%)	24	Network and Credential
<input type="checkbox"/> Client encryption level	Low (20%)	8	Network and Credential
<input type="checkbox"/> Digitally encrypt data	Low (20%)	4	Network and Credential
<input type="checkbox"/> Anti-Spoofing	Medium (50%)	6	OS Security Baseline
<input type="checkbox"/> Update InDesign	Low (20%)	8	Application Vulnerability
<input type="checkbox"/> Update Cisco AnyConnect	Low (20%)	4	Application Vulnerability

GravityZone Elite Security Risks Section: Indicators of Risk with Mitigation Recommendations

HyperDetect Tunable Machine Learning

Leverage HyperDetect’s machine learning models and stealth attack-detection technology to stop polymorphic threats, obfuscated malware, file-less and script-based attacks and other suspicious activities before they can run on the endpoint (pre-execution). Adjust the detection-aggressiveness level to ensure visibility into high-impact threats and minimize noise from low-risk, low-probability infections.

Hyper Detect

This feature is an additional layer of security specifically designed to detect advanced attacks and suspicious activities in the pre-execution stage. It can be customized to suit your organization's security requirements.

Protection Level

Permissive Normal Aggressive

<input checked="" type="checkbox"/> Targeted Attack	<input type="radio"/>	<input type="radio"/>	<input checked="" type="radio"/>
<input checked="" type="checkbox"/> Suspicious files and network traffic	<input type="radio"/>	<input checked="" type="radio"/>	<input type="radio"/>
<input checked="" type="checkbox"/> Exploits	<input type="radio"/>	<input type="radio"/>	<input checked="" type="radio"/>
<input checked="" type="checkbox"/> Ransomware	<input type="radio"/>	<input type="radio"/>	<input checked="" type="radio"/>
<input checked="" type="checkbox"/> Grayware	<input checked="" type="radio"/>	<input type="radio"/>	<input type="radio"/>

Actions

Files: Extend reporting on higher levels

Network traffic: Extend reporting on higher levels

[Reset to default](#)

GravityZone Elite: HyperDetect Configuration Menu

Bitdefender GravityZone A Leader in Endpoint Protection



“GravityZone provided the highest levels of reliable security without slowing down computers and impacting the users’ experience. Operationally, GravityZone also stood out because it provides a central view of our infrastructure and is easy to manage.”

– Matt Ulrich, Network Administrator, Speedway Motorsports

Bitdefender®

Founded 2001, Romania
Number of employees 1800+

Headquarters
Enterprise HQ – Santa Clara, CA, United States
Technology HQ – Bucharest, Romania

WORLDWIDE OFFICES
USA & Canada: Ft. Lauderdale, FL | Santa Clara, CA | San Antonio, TX | Toronto, CA
Europe: Copenhagen, DENMARK | Paris, FRANCE | München, GERMANY | Milan, ITALY | Bucharest, Iasi, Cluj, Timisoara, ROMANIA | Barcelona, SPAIN | Dubai, UAE | London, UK | Hague, NETHERLANDS
Australia: Sydney, Melbourne

