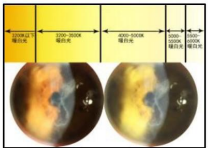


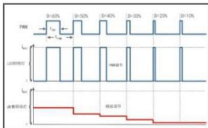
S5D Digital Slit Lamp

Feature:

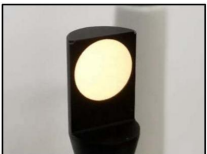
- Outstanding Optic Quality Ensure the Comfortable View
- Precision Machining Makes the Smooth and Flexible Movement
- Professional & Multi-functional Software With Simple Humanized Human-computer Interface & Easy Operation
- Have both image capturing function and video capturing function
- Image processing for better Symptoms Diagnose
- Backup patient data base easily guarantee data safety
- Highest Quality Images Captured Which Impressive Every User
- Aspecial designed black cross in right eyepiece which enable to synchronise the image sharpness in eyepiece



Warm Light Source
3000K color temperature light source with the best color reduction



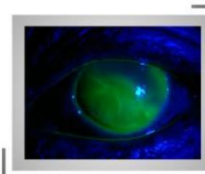
PWM brightness control
Using PWM technology to control the brightness of the light source and keep color temperature stability



Ø 14mm Aperture



Continuously adjustable illumination



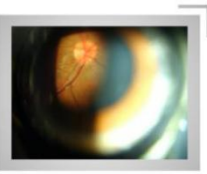
Corneal fluorescein staining under diffused light (10X)



Cataract



Normal fundus under pre-set lens



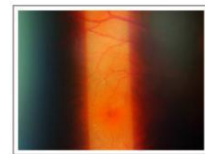
Optic nerve under three-mirror



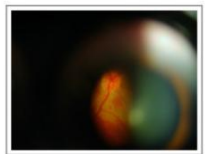
Iris coloboma



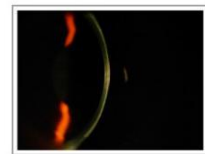
Iris pigmentation



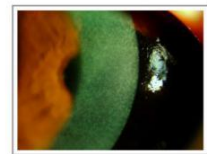
Fundus under 90D lens



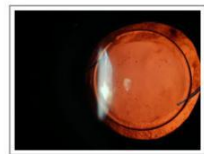
Fundus hemorrhage under three-mirror



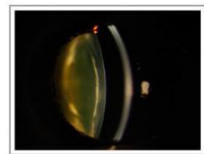
Cornea after LASIK



Injured corneal epithelial cells



After artificial lens operation



Crystalline lens

Technical Data

Microscope Type	Parallel
Magnification changer	Revolving drum
Eyepiece	12.5X
Illumination Source	Imported LED

Max Illumination Intensity	60000 Lux
Total magnification	6X 10X 16X 25X 40X
Diameter of Vision field	φ37 φ23 φ14 φ8.7 φ5.7mm (φ23 φ14 φ8.7optonal)
Diopter adjustment	-7D~+7D
Slit image width	0mm~14mm continuous
Slit image length	1mm~14mm continuous
Diameter of aperture	Φ14mm Φ10mm Φ5mm Φ3mm Φ1mmΦ0.2mm
Slit angle	0~180 continuously rotation
Illumination tilting	5° 10° 15° 20° totally 4 step
Filter	Heat absorption, Grey, red freer(Green), Cobalt blue
Illumination	12V 50W Halogen Bulb
Fixation	Red LED 3.5V
Power	In put votage100~240V

S6D Digital Slit Lamp

Feature:

- Single Lens Reflex, which is used as the professional image collecting medium, is the best choice for the ophthalmic shooting for its sensitive capture to the light and colour and the complete adjusting functions.
- Real time dynamic display. The camera could capture clearer images benefiting from the examination process is displayed on the 3 inches LCD at the real time.
- Galilean stereoscopic microscope provides the practitioners great third dimension and large-angle observation.
- Imported Schott optics from Germany reduces optical distortion, increases clarity and depth of focus.
- All the Optical lenses are moistureproof, mildewproof and anti-reflected treated.
- Osram bulb provides the low heating, high brightness and even lighting.
- The slit lamp could not only clearly observe the ocular surface and anterior segment, but also the posterior lens capsule, and even film the fundus nidus with the help of the preset lens.
- Special designed background illumination.
- Photo easily taken by the button on the joystick.
- Patient's information, examining records and pictures of sicking part can be reserved by setting the data base.
- To measure and mark the sicking part and print the complete case report.
- 18 megapixels could clearly provide all the details and meet the harsh requirement to the image.

