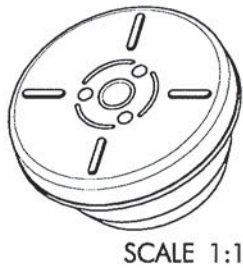
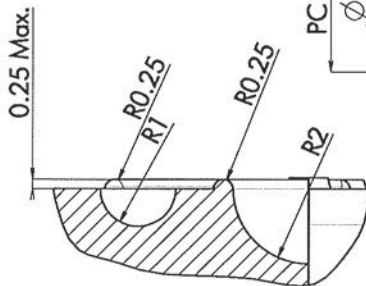
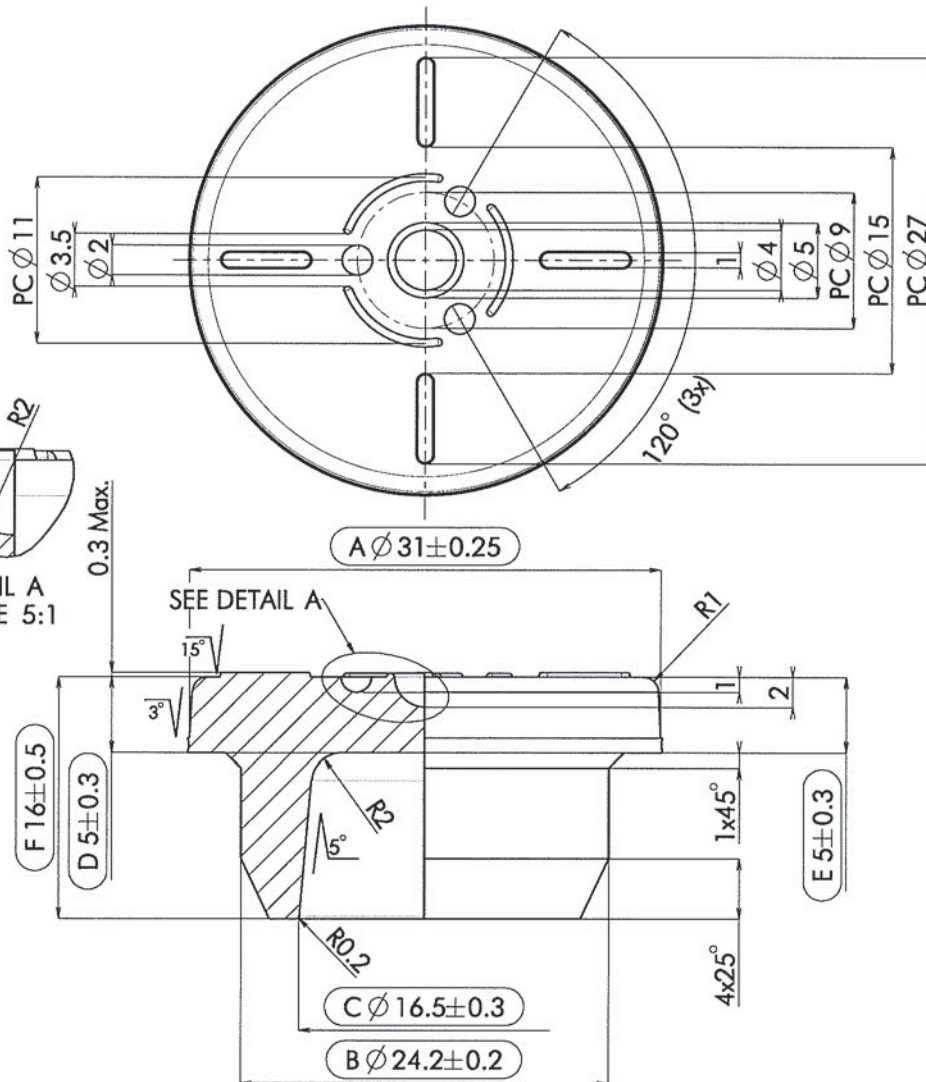


**DATWYLER****STOPPER****PRODUCT NUMBER****V9003**

SCALE 1:1

DETAIL A
SCALE 5:1

DIMENSIONS			FM257 Omniflex	Ø 31.0	Ø 24.2	Ø 16.5	5.0	5.1	16.0		
	Jan 01,'03		FM240	Ø 30.85	Ø 24.1	Ø 16.5	5.0	5.0	16.0		
	DATE	CHECKED	Deviating compounds mentioned above.	A	B	C	D	E	F	G	H
Units are in mm All edges not specified: R0.2mm (.008inch)											
MODIFICATIONS	NR	OBJECTS OF MODIFICATION				DATE	TRACED	CHECKED	AUTHORIZED		
	2	Converted to new drw-format				May 21,'10	PD				
	1	Updated to current CAD standard				Aug 18,'06	RT-2	RT			
DRAWING	TRACED	RT-2	DATE	Aug 18,'06	CHECKED	15 June, 2010		INITIALS	FILE REF.		SCALE 2:1
	DERIVED FROM DRAWING							DATED		PROJECTION	
	REPLACES PRODUCT DRAWING					V9003		DATED		Aug 25,'06	
VALIDITY	VALID FROM				AUTHORIZED BY			SIGNATURE			
	June 23, 2010										

This drawing is the property of Datwyler and may not be copied nor disclosed to third parties without our written consent.
Dimensions without tolerance indication correspond to DIN-ISO 3302 Class M3. Cut or punched edges can be slightly conical, excentric and/or variable.

Printed copies will not be systematically updated