



Always with B&E Korea

No.1 for the Best
for the Excellent

No.1 for the Best
for the Excellent



About B&E KOREA Co., Ltd.

B&E KOREA is an innovative company that never stops inventing for R&D of dental materials. We have founded in Mar. 2012 with the motto of providing innovative product for the Best & Excellent'to be a No.1 company in dental industry.

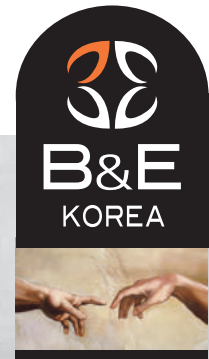
We are driving to support the best dental materials with constant R&D investment.

In addition, we already acquired certification of GMP, ISO, CE.

Now we are trying to reach various market and channel with professional human resources who have various experience in this dental industry.

B&E KOREA will continue to focus on product innovation and provide reliable product to meet customer satisfaction in dental market.





Management Identity

To realize the best quality of dental material based on human & customer focused company system.

Quality Goals

Guarantee about Customer Satisfaction for Quality.

Ensure the Product's Stable Quality.

Realize the Best Quality of Dental Material.

Mandatory Subject

Become a Leading Company with Guaranteed Quality.

Constant R&D Investment.

Establish Challenging & Creative Organization Culture.



Always with B&E Korea





TABLE OF CONTENTS

06 Restorative Materials

Universal Composite resin
Flowable Composite resin
Light-Cured Base & Liner
Dual-Cured Core Build Up Resin
Etching Gel
Bonding Agent

09 Temporary Materials

Temporary Cement
Temporary Filling Material
Temporary Crown

11 Endodontic/ Orthodontic

Endodontic
Orthodontic

14 Impression Materials

Heavy Body
Light Body
Bite Registration
Transparent Impression
Putty

16 Dental Laboratory Materials

Gingival Reproduce
Resin for Implant Jig

17 Other Materials

Bleaching Gel
Bleaching Dam
Water Soluble Vaseline

ISO CE
2138



Restorative Materials



Universal Composite Resin

Xs-Fil

Xs-Fil designed for posterior and anterior restorations. Nano-hybrid formula delivers easy polishability, exceptional wear resistance, low polymerization shrinkage and superior compressive strength. It supports radiopaque either.

Refill Type



Packaging	Xs-Fil 4g syringe x 1ea	
Shade	A1, A2, A3, A3.5, AO2, AO3, B2, B3, TW	
Specity	#1111A1 (A1)	#1111AO2 (AO2)
	#1111A2 (A2)	#1111AO3 (AO3)
	#1111A3 (A3)	#1111B2 (B2)
	#1111A35 (A3.5)	#1111B3 (B3)
		#1111TW (TW)

Characteristics of Xs-Fil

- Low Polymerization Shrinkage for Less Stress on the Tooth
- Less Potential for Patient Sensitivity
- Easy to Finish to a Smooth Surface
- Excellent Handling with Exceptional Resistance to Slumping
- Strong, Long-Lasting and Natural-Looking results
- Outstanding Versatility for any Area of the Mouth

Applicable Range

- Direct Anterior and Posterior Restorations
- Splinting
- Indirect Restorations including Inlays, Onlays and Veneers

Flowable Composite Resin

B&E Flow

B&E Flow is light-cured flowable composite which makes it ideal for small cavities in anterior and posterior teeth. It has the characteristics of good flowability, high compressive strength, and radiopaque.



Packaging	B&E Flow 1.2mL (2g) syringe x 2ea, Tips	
Shade	A1, A2, A3, A3.5, B2	
Specity	#1121A1 (A1)	#1121B2 (B2)
	#1121A2 (A2)	
	#1121A3 (A3)	
	#1121A35 (A3.5)	

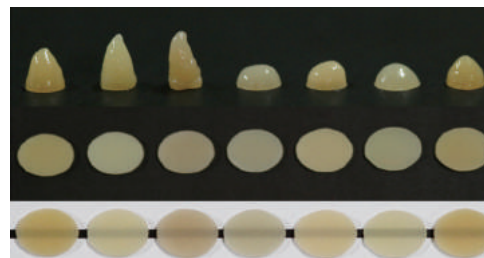
Characteristics of B&E Flow

- Exceptional Esthetics
- Direct or Indirect Pulp Capping
- Strong, Long-Lasting and Natural-Looking Results
- Low Polymerization Shrinkage
- Easy to Adhere to Bracket for Orthodontics
- Similar Modulus of Elasticity with Dentine

Applicable Range

- Application of Class III ~ I Cavity
- As a liner for Class I ~ II Cavity

Flowability & Transparency



B&E Flow A B C D E F



Xs-FiL Kit

Light-Cured Universal Composite Resin

Xs-FiL is light-cured nano-hybrid composite resin for posterior and anterior restorations.



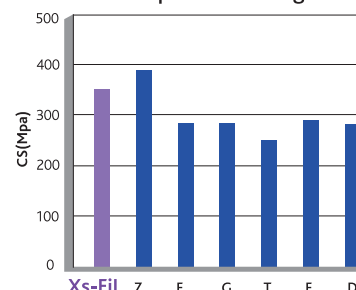
Kit Type

Packaging	Xs-FiL 4g syringe x 4ea
	B&E Etch-37 5mL syringe x 1ea
	Xs-Bond 5mL bottle x 1ea
Specity	#1111200

Characteristics of Xs-FiL

- Exceptional Esthetics
- Low Polymerization Shrinkage
- Less Potential for Patient Sensitivity
- Easy to Finish to a Smooth Surface
- Strong, Long-Lasting and Natural- Looking Result
- Outstanding Versatility for any Area of the Mouth
- Radiopaque
- Shade : A1, A2, A3, A3.5, AO2, A03, B2, B3, TW

Compressive Strength





Restorative Materials



Light-Cured Base & Liner

B&E INO

B&E INO is a light-cured base & liner that contains Calcium Hydroxyapatite in Urethane methacrylate oligomer. It makes to reduce the pulp irritation and to have low polymerization shrinkage. B&E INO stimulates secondary dentin formation by releasing Calcium ion, Hydroxyl ion and Phosphate ion. B&E INO has cariostatic properties and excellent adhesion strength on teeth.



Packaging	B&E INO 1.2mL (2g) syringe x 2ea, Tips
Shade	#113100

Dual-Cured Core Build Up Resin

ChemiCore A3 ChemiCore Blue

ChemiCore is a dual-cure type abutment build-up material, which can be used in all types of abutment build-up due to convenient manipulation and excellent compressive strength.



Packaging	ChemiCore 5mL (10g) syringe x 2ea Eco Tips, Mixing Tips	
Shade	#1161A3 (A3)	#1161BL (Blue)

Characteristics of ChemiCore

- Due to similar strength to tooth strength (dentin), it is good to be prepared.

Etching Gel

B&E Etch-37

B&E Etch-37 is a phosphoric acid (H_3PO_4) semi-gel type agent intended for use on dentin and enamel. B&E Etch will effectively remove the smear layer so it helps successful bonding.



Packaging	B&E Etch-37 5mL syringe x 3ea, Tips
Shade	#115100

Characteristics of B&E Etch-37

- Contains Bio-compatible
- Polymeric Materials
- Completely Residue-Free after Spray with Water
- Excellent Viscosity
- Semi-gel Type
- Less Aggregation

Bonding Agent

Xs-Bond

Xs-Bond is 5th generation, light-cured, single-bottle application bonding system. High strength bonding compatible with all classes of direct composite restoration to dentin and enamel, as well as treated porcelain and set amalgam.

Packaging	Xs-Bond 5mL bottle x 1ea
Shade	#114100

Characteristics of Xs-Bond

- Direct Light-curing Restorations
- Hygienic Single-dose Units
- Hard Bonding Strength
- Possible to Use for Self-cured Products





Temporary Materials



Non-Eugenol Temporary Cement

ChemiTemp NE

ChemiTemp NE/Orange is a non-eugenol temporary cement to make temporary cement or prosthetic appliance adhere. ChemiTemp can be used for patients showing allergic reaction to eugenol and it minimizes loss amount by using eco tips.

Characteristics of ChemiTemp NE

- Appropriate Adhesive Strength
- When using Long-term Temporary Crown
- For Bridge Temporary Crown



Packaging	ChemiTemp NE 5mL syringe x 2ea Eco Tips
Shade	#212100

ChemiTemp Orange

Characteristics of ChemiTemp Orange

- Easy to Remove Residual Cement on Inner Surface of Prosthetic Appliance or Tooth Surface
- When Using Short-term Temporary Crown
- For Single Crown
- Not Soluble in Water



Packaging	ChemiTemp Orange 5mL syringe x 2ea Eco Tips
Shade	#212200

Implant Resin Cement

ChemiTemp White

ChemiTemp White is a resin cement for implant only. Remained cement could be removed easily by light-cured, and implant crown's inside can be self-cured so that it is easy to use it. ChemiTemp White is possible to maintain long period, and it shall be removed easily just in case by tools.



Packaging	ChemiTemp White 5mL syringe x 1ea Mixing Tips, Eco Tips
Shade	#211100

ChemiTemp NE

Mixing Time	Working Time (23℃)	Setting time in Mouth (32℃)
0 : 15	0 : 30	3 : 30

ChemiTemp Orange

Mixing Time	Working Time (23℃)	Setting time in Mouth (32℃)
0 : 15	0 : 40	3 : 00

ChemiTemp White (Dual-Cured)

Mixing Time	Working Time (23℃)	Setting time in Mouth (32℃)
-	0 : 60	4 : 00



Temporary Materials



Temporary Filling Materials

X-Temp / B&E Temp

Xs-Temp and B&E Temp are light-cured temporary filling materials. They have characteristics of easy removal from cavities, high elasticity, and great strength. Until a long-term restorative material can be used to fill cavity, it has the role for maintaining the shape of a tooth.

X-Temp Yellow X-Temp Blue

Characteristics of X-Temp

- No Sticky
- Easy to Remove by One Piece
- Suitable for Inlays and Onlays
- Durable and tight marginal seal



Packaging	X-Temp 3g syringe x 3ea	
Shade	#2131YL (Yellow)	#2131BL (Blue)

B&E Temp Yellow B&E Temp Blue

Characteristics of B&E Temp

- Every Characteristics of X-Temp belongs B&E Temp
- Squeeze Type
- Not Use Instrument
- Minimize Loss with Direct Filling
- No Flowable



Packaging	B&E Temp 1.2mL syringe x 4ea, Tips	
Shade	#2132YL (Yellow)	#2132BL (Blue)

Temporary Crown

B&E Crown Self

Temporary crown for making period of permanent crown that it has high dental esthetics. It doesn't breakable on thin part so that it reduces repair case dramatically. B&E Crown Self is a self-cured temporary crown that it helps reducing possibility for re-work because of excellent spreading, and it minimized patient's inconvenience due to rapid setting time & low heat.

Characteristics of B&E Crown Self

- Use the Current Impression Gun (1:1 Ratio)
- Use the Current Light Body's Mixing Tip
- Exceptional Esthetics
- No Smell when Making
- Not easy for breakable due to
- Excellent Flexibility



Packaging	B&E Crown Self 50mL cartridge x 1ea, Mixing tips	
Specity	#2143A1 (A1)	#2143A2 (A2)
	#2143A3 (A3)	#2143A35 (A3.5)

B&E Crown Putty

B&E Crown Putty is a light-cured temporary crown that It is a dough type and it isn't sticky to hand so that It is possible to make temporary crown by hands directly.



Packaging	B&E Crown Putty 12mL syringe x 2ea	
Specity	#2142A1 (A1)	#2142A2 (A2)
	#2142A3 (A3)	#2142A35 (A3.5)



Endodontic Filling Material

B&E **Root-Sil**

B&E Root-Sil is a root canal filling material with silicone & MTA ingredient Included. It is possible to be used independently or combined with Gutta-percha. It is not water-soluble so that it can minimize induction of inflammation.



Packaging	B&E Root-Sil 5mL syringe x 1ea, Endo Tips
Shade	#312100

Canal Prep Solutions

B&E **PREP**

B&E Prep is a 18% EDTA for lubricant and chelating in root canal. B&E Prep makes smooth binding and prevents breaking of files. The water soluble base makes no residue and easily removes calcifications.



Packaging	B&E Prep 6g syringe x 2ea, Tips
Shade	#311100

Orthodontic Cement / Primer

BrackBond T / Bond Primer

Orthodontic BrackBond Transparent is a light-cured orthodontic adhesive paste. With combination Orthodontic primer, they helps to attach bracket on the tooth for a long period. With appropriate viscosity, it is excellent to adjust bracket's position.



Packaging	B&E BrackBond 3.3g syringe x 3ea	
	Bond Primer 5mL bottle x 1ea	
Specity	#411100 (BrackBond)	#412100 (Primer)



B&E Crown Kit

Light-Cured Temporary Crown

B&E Crown Kit is the product that it is possible to make light-cured temporary crown with the property of transparent impression's light penetration. With exceptional flowability, temporary crown's surface shows smooth after light-cured.



Characteristics of B&E Crown Kit

- With included transparent impression, possible to make temporary crown with light-cured only.
- Quick Making of Temporary Crown
- Exceptional Esthetics
- No Smell when Making
- Low dust when Polishing
- Easy to repair due to syringe type

Kit Type

Packaging	B&E Crown LV 1.2mL syringe x 10ea
	ChemiSil Clear 50mL cartridge x 2ea
	B&E Sep 5mL syringe x 1ea
Specity	#21400



Temporary Crown



B&E CROWN

Light-Curing Temporary CROWN Material

Recommendation Use



- 1 Prior to preparation or extraction of a tooth, take impression using transparent silicone (Chemi Sil Clear : setting time 1:30)



- 2 Preparation & Dry the prepared teeth



- 3 Spread teeth with water-soluble Vaseline(B&E Sep)



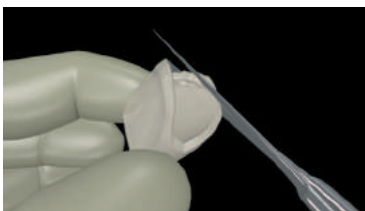
- 4 Dispense B&E Crown into your impression



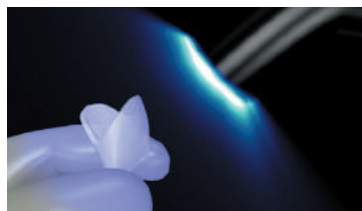
- 5 Place the impression filled with B&E Crown on the prepared teeth with gentle pressure



- 6 Light cured for 20s
7 Remove the impression filled with B&E Crown from the mouth



- 8 The temporary can be shaped with a pair of scissors or suitable instruments



- 9 The temporary crown is light-cured for 20s



- 10 Cement the temporary crown using any temporary cement (ChemiTemp NE or ChemiTemp Orange)



- 11 Polishing and Setting

B&E CROWN



2mL syringe x 10ea

Chemi SIL Clear

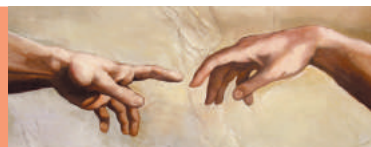


2 cartridges / box

B&E Sep



5mL syringe x 1ea, tip



Impression Materials

Heavy Body

Chemi SiL HB

ChemiSiL HB is a hydrophilic addition polymerization type silicone rubber impression material. It has high tear strength, elastic recovery and shore hardness.



Packaging	ChemiSiL HB 50mL cartridge x 2ea
Shade	#511100

Light Body

Chemi SiL LB

ChemiSiL LB is a hydrophilic addition polymerization type silicone rubber impression material. It has high tear strength, elastic recovery and reproducibility.



Packaging	ChemiSiL LB 50mL cartridge x 2ea
Shade	#512100

Chemi SiL

ChemiSiL is a hydrophilic addition polymerization type silicone rubber impression material comprising Base and Catalyst with contrast color, corresponding to TYPE 1, 3 under the classification of ISO 4823.

Chemi SiL HB

Chemi SiL LB

Chemi SiL BITE-BLW

Chemi SiL Clear

Characteristics of ChemiSiL

- Expression of Ideal Flow
- Realization of Maximum Tear Strength
- Hydrophilic Property
- Reproducibility Realization of Minute Region
- No Bubble from Vacuum Combination Production

Applicable Range

- To Obtain Impression of Total Individual Teeth in Oral Cavity
- To Obtain Precise Impression for Crown, Inlay, Onlay and Bridge
- To Obtain for Implant



Impression Materials



Bite Registration

Chemi SiL BITE-Blu

ChemiSil Bite-Blu is an addition polymerization type silicone rubber impression material to check occlusal surface. With rapid setting time & high hardness, it is possible for easy trimming.



Packaging	ChemiSil Bite-Blu 50mL cartridge x 2ea
Shade	#513100

Transparent Impression

Chemi SiL Clear

ChemiSil Clear is a quick-setting, transparent silicone material . It has high strength and light penetration property after polymerization.



Packaging	ChemiSil Clear 50mL cartridge x 2ea
Shade	#514100

PUTTY

B&E SOFT PUTTY

B&E Soft Putty is hydrophilic addition polymerization type silicone rubber impression material with mixing base & catalyst by hands. It has excellent detail reproduction, high tear strength. It combined with light body.



Packaging	B&E SOFT PUTTY 280mL x 2ea
Shade	#515100

Product	Working Time (23°C)	Setting Time in Mouth (32°C)	Hardness (Shore A)
ChemiSiL HB	1 : 30	3 : 30	65
ChemiSiL LB	1 : 30	3 : 30	52
ChemiSiL Bite-Blu	0 : 20	0 : 55	91
ChemiSiL Clear	0 : 30	2 : 00	70
ChemiSiL Putty	0 : 30	2 : 00	81



Dental Laboratory Materials



Gingival Reproduce

B&E GUM

B&E GUM is an addition polymerization type gingiva reproduce silicone rubber impression material. It has high flowability & tensile strength, so that it is not be torn.



Packaging	B&E GUM 50mL cartridge x 2ea
Shade	#611100

Resin For Implant Jig

B&E Pattern Putty

B&E Pattern Putty is a dough type resin for implant jig. Without stickiness, it is convenient to make crown's shape by hands.



Packaging	B&E Pattern Putty 12mL syringe x 2ea
Shade	#612100

Resin For Implant Jig

B&E Pattern Flow

B&E Pattern Flow is a gel type resin for implant jig. It has burnability so that it doesn't have remained after burning.



Packaging	B&E Pattern Flow 12mL syringe x 2ea, Tips
Shade	#612200





Other Materials



Bleaching Gel

Beau

Beau is a bleaching material for professional that it consists of bleaching liquid, thickener and bleaching dam. It shows great bleaching result by using 1~2 time application the gel type material from the mixing of bleaching liquid and thickener.



Packaging	Beau 1 Set
	B&E Block Dam 1.2mL x 4ea, Tips
	Thickener 5mL x 1 ea
	Bleaching liquid x 2 bottle
Specity	Container x 4 ea
	#711100

Bleaching Dam

B&E Block-Dam

B&E Block Dam is a light-cured resin barrier for isolating tissue adjacent to teeth being whitened. For single tooth bleaching, B&E Block-Dam may be used protect closed teeth.



Packaging	B&E Block Dam 1.2mL syringes x 4ea, Tips
Shade	#712100

Water Soluble Vaseline

B&E Sep

B&E Sep is made with hydrophilic substances that are harmless to human body and therefore can be easily washed with water and does not lower the adhesive power of cements or bonding agents.



Packaging	B&E Sep 5mL x 1ea, Tips
Shade	#713100

No.1 for the Best
for the Excellent

Restorative Materials

Xs-FiL



Xs-FiL Kit



B&E Flow



B&E INO



ChemiCore A3 ChemiCore Blue



B&E Etch-37



Xs-Bond



Temporary Cements

ChemiTemp White



ChemiTemp NE



ChemiTemp Orange



Temporary Filling Materials

X-Temp Yellow X-Temp Blue



B&E Temp Yellow B&E Temp Blue



Temporary Crowns

B&E Crown Kit



B&E Crown Self



B&E Crown Putty



Endodontic/Orthodontic

B&E **Root-Sil**



BrackBond T / Bond Primer



B&E **PREP**



Impression Materials

Chemi SiL **HB**



Chemi SiL **LB**



Chemi SiL **BITE-BLU**



Chemi SiL **Clear**



B&E **SOFT PUTTY**



Dental Laboratory Materials

B&E **GUM**



B&E **Pattern Putty**



B&E **Pattern Flow**



Other Materials

Beau



B&E **Block-Dam**



B&E **Sep**





Manufacturer



B&E KOREA |주|비|엔|이|코|리|아
#807, #802, B Dong, 60, Haan-ro,
Gwangmyeong-si, Gyeonggi-do, Korea
Tel. 82-70-7425-2818 Fax. 82-2-6112-2816

EU representative



BIOGERI
Schanzenstrasse 10, Hamburg, Germany
Tel. +49-40-4143-102150
Fax. +49-40-4143-102159