



PRINTERS
Printtec S / Printtec C
Autoloader

SLIDE PRINTER
AND SINGLE CASSETTE PRINTER,
AUTOLOADER FOR BATCH PRINTING

DESIGN &
MANUFACTURING
MADE IN GERMANY

Overview

Printers, Autoloader



Printtec S

Slide printer

100 slides per magazine,
programmable ID chip, slide counter

Output tray: 15 slides

Printing speed

black	9 slides / min.
monochrome	5 slides / min.
multicolor	4 slides / min.

Specifications

100 - 240 V, 50/60 Hz

180 x 320 x 218 mm (W x D x H)

7.6 kg



Printtec C

Single cassette printer

1 cassette is inserted manually
and removed after printing.

-

Printing speed cassette printing (single)

black	9 cassettes / min.
monochrome	6 cassettes / min.
multicolor	5 cassettes / min.

Specifications

100 - 240 V, 50/60 Hz

222 x 244 x 244 mm (W x D x H)

7.5 kg



Printtec C
printer for single
cassettes is not
included!

Autoloader

*for batch printing**

Loading chutes: 4 magazines x 40 cassettes

Output: 7 cassettes

Output extension tray: 10 cassettes,
multiple extendable +10, +10, +10 cassettes

Output tray: 7 cassettes

Printing speed in combination with Printtec C

black 8 cassettes / min.

monochrome 5 cassettes / min.

multicolor 4 cassettes / min.

Specifications

100 - 240 V, 50/60 Hz

304 x 658 x 490 mm (W x D x H)

33.6 kg

* Note: Cannot be used separately, but only in combination with the single cassette printer Printtec C!

Printtec S

Slide printer

Slee's **Printtec S** slide printer can significantly increase the efficiency of your lab while helping to reduce the risk of misidentification of specimens. It prints directly onto slides, eliminating handwriting or expensive, difficult to apply xylene-resistant labels.

With impressive 300 dpi print resolution, you can print text, graphics and logos along with high-resolution linear and 2D bar codes on every slide you process. Printtec S is also a COLOR slide printer. This revolutionary feature lets

you purchase and keep inventory of only one slide color – plain white. With the slide printer you can print a wide range of colors and patterns for faster identification.



Highlights

- Black or full color printing of text, graphics, barcodes and QR codes on demand
- Reduction of inventory effort for different colored slides by using only pure white slides and printing in color
- Output tray capacity: 15 slides
- Magazine capacity: 100 slides with programmable ID chip and slide counter
- Print directly onto slides
- Small footprint
- Chemical and UV resistant print to withstand common processes in laboratories - reliable identification of slides even after several years
- USB 2.0 interface for easy and direct connection to Windows 8.1 / 10 based devices like PCs and tablets

Standard components

Blue slide magazine for 100 slides
Standard ribbon (black, 1 pcs.)
Slides
USB cable
Printtec cleaning pen
Mains cable
Memory card with manuals
Quick start guide

Item No.

Printtec S 100 - 240 V, 50/60 Hz	10050001
Printtec S with high pressure 100 - 240 V, 50/60 Hz	10050004

Optional accessories

Item No.

Blue slide magazine for 100 slides, spare magazine to optimize the workflow	39300002
Colored ribbon for Printtec S standard and Printtec S with high pressure, TC 1	39300008
Colored ribbon for Printtec S standard, TC 2	39300007
Colored ribbon for Printtec S standard and Printtec S with high pressure	39300005
Monochrome ribbon black for Printtec S standard and Printtec S with high pressure, TC 1	39300006
Monochrome ribbon black for Printtec S standard, TC 2	39300009
Printtec cleaning pen	39300015
Barcode Scanner Datalogic Medical Grade 2D incl. stand	39300011
Printhead	39300001
PTNet server	39300014
Further accessories on request	

Specifications

Capacity	
magazine	100 slides in the magazine, programmable ID, slide counter
output tray	15 slides
Printing speed	
black	9 slides / min.
monochrome	5 slides / min.
multicolor	4 slides / min.
Electrical parameters	100 - 240 V, 50/60 Hz
Dimensions (W x D x H)	180 x 320 x 218 mm
Weight w/o accessories	7.6 kg

Slide magazine

Slide output



Easy handling



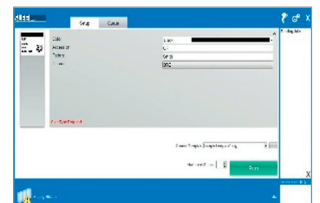
Printtec S is designed for efficient, hands-free operation. Slides are stored in easy-to-load magazines - away from dust and other potential contaminants. It takes just a few seconds to change the magazine if you need standard slides for one study and positively-charged slides for others. The level of slides remaining in a magazine is easily viewed through the magazine's transparent blue LED backlit case.

Direct print



Prints directly onto slides - eliminates illegible handwritings or labels that are hard to apply and can potentially fall off. Avoids disturbances of laboratory equipment.

Free software



Free PTLab™ software - template-driven software for your individual design and data workflow and configurable data stream connection to LIS systems.

Output extension for Printtec S, slide printer

The output extension for up to 100 slides enables the **Printtec S** to print larger quantities of slides without interruption.

Item No.

Output extension
for up to 100 slides

39300003



Highlights

- Ideal for printing larger quantities, up to 100 slides if required
- Inexpensive solution for batch processing, avoids waiting periods
- Removable slide container made of stainless steel for quantities up to 100 slides, for continuous operation
- Simple, low-maintenance design
- Easy mounting under the Printtec S

Printtec C

Single cassette printer

Slee's cassette printer **Printtec C** can significantly increase the efficiency of the laboratory and at the same time reduce the risk of misidentification of specimens. The cassette printer **Printtec C** prints in black, monochrome or multicolor as required! The user can print manually loaded cassettes with texts, graphics and logos along with linear and 2D bar codes directly onto the printing surface of the cassettes. This enables a more efficient workflow and additionally increases the safety for the patient.



Cassette tray

Highlights

- Modular design
- Setting and selection of color variants to increase safety in the laboratory
- Quick and easy installation
- Capacity for one single cassette, for on-demand print
- For standard cassettes with 35° to 45° angles with either lid on or off, no adjustments needed
- High printing speed
- USB 2.0 interface for easy and direct connection to Windows 8.1 / 10 based devices like PCs and tablets

	Item No.
Printtec C 100 - 240 V, 50/60 Hz	10050002

Standard components

Cassettes

Standard ribbon, black, 1 pcs.

USB cable

Printtec cleaning pen

Mains cable

Memory card with manuals

Quick start guide

Optional accessories

Item No.

Colored ribbon for Printtec C, TC 1 39300008

Monochrome ribbon black
for Printtec C, TC 1 39300006

Printtec cleaning pen 39300015

Barcode scanner Datalogic Medical
Grade 2D incl. stand 39300011

Printhead 39300001

PTNet server 39300014

Further accessories on request

Specifications

Capacity

1 cassette

The cassette is inserted manually and removed after printing.

Printing speed cassette printing (single)

black 9 cassettes / min.

monochrome 6 cassettes / min.

multicolor 5 cassettes / min.

Electrical parameters 100 - 240 V, 50/60 Hz

Dimensions (W x D x H) 222 x 244 x 244 mm

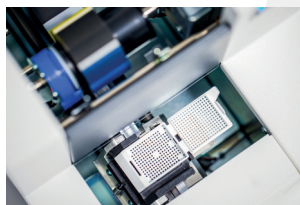
Weight w/o accessories 7.5 kg

Direct print



Prints directly onto cassettes - eliminates illegible handwritings or labels that are hard to apply and can potentially fall off.

Easy handling



A cassette is inserted manually and the print is started via the operating software. When the print is finished, the cassette is removed again.

Variety of colors



The cassettes can be printed in black, single color or multicolor, depending on your needs! The possibility of color variation significantly increases the safety and efficiency of the laboratory.

Free software



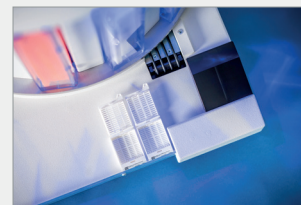
Free PTLab™ software - template-driven software for your individual design and data workflow and configurable data stream connection to LIS systems.

Single cassette printer



One cassette at a time is loaded for single cassette print. Printing speed is extremely fast at about 6 seconds per cassette.

*Optional Autoloader**



4 x 40 cassettes can be automatically loaded for a batch print. Printing speed is very fast at about 8 seconds per cassette.

* The autoloader version is available as an expansion to the Printtec C single cassette printer.

Slee
Always
focusing
on patient's
well-being.

Autoloader* for batch printing and color variations

The expansion of the cassette printer **Printtec C** with the **Autoloader** offers even more efficiency to the workflow of the laboratory while reducing the risk of misidentification of specimens. The **Autoloader** has been specially designed for fast and efficient processing. The 4 cassette reservoirs tremendously increase the number of the possible cassette prints. The magazine with the cassettes is simply inserted into one of the 4 loading chutes.

The quantity of remaining cassettes can be easily controlled through the front of the transparent magazine, illuminated with blue LED backlight, but is additionally displayed on the LCD screen.



Highlights

- 4 transparent loading chutes with a capacity of up to 40 cassettes / magazine
- Capacity of up to 160 cassettes for on-demand or batch printing
- Output capacity: 7 cassettes, expandable with 10 cassettes with each output extension tray
- Possible forwarding of the cassettes via the output tray extension to the processing station
- Prints on standard cassettes with 35° to 45° angles with either lid on or lid off, no adjustments needed
- Printing speed*:
 - up to 8 cassettes per minute (black)
 - up to 5 cassettes per minute (monochrome)
 - up to 4 cassettes per minute (multicolor)
- USB 2.0 interface for easy and direct connection to Windows 8.1 / 10 based devices like PCs and tablets

* Note: Cannot be used separately, but only in combination with the single cassette printer **Printtec C**!

	Item No.
Autoloader 110 - 240 V, 50/60 Hz for cassette printer Printtec C*	10050003

Standard components

Magazine for loading chutes incl. separator, set of 4
6-pin-mini-DIN cable
Output extension tray , 1 pcs.
Mains cable
Memory card with manuals
Quick start guide

Optional accessories

	Item No.
Magazine for loading chutes incl. separator, set of 4	39300004
Output extension tray	10510000
6-pin-mini-DIN cable	39300017
Further accessories on request	

Specifications

Capacity	
Loading chutes	4 magazines x 40 cassettes
Output	7 cassettes
Output extension tray	10 cassettes, multiple extendable +10, +10, +10 cassettes
Printing speed in combination with Printtec C*	
black	8 cassettes / min.
monochrome	5 cassettes / min.
multicolor	4 cassettes / min.
Electrical parameters	110 - 240 V, 50/60 Hz
Dimensions (W x D x H)	305 x 658 x 490 mm
Weight w/o accessories	33.6 kg

* Note: Cannot be used separately, but only in combination with the single cassette printer Printtec C!



Printtec C
printer for single
cassettes is not
included!

Loading chutes with magazines

Output

Output extension tray



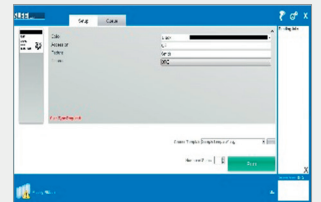
The extension of the output tray is multiple expandable with +10 cassettes each. A simple plug-in extends the output area so the workflow becomes more relaxing.

Direct print



Prints directly onto cassettes - eliminates illegible handwritings or labels that are hard to apply and can potentially fall off.

Free software



Free PTLab™ software - template-driven software for your individual design and data workflow and configurable data stream connection to LIS systems.

Easy handling



The Autoloader version in combination with the Printtec C has been specially designed for fast and efficient processing. The magazines with the cassettes are simply inserted into the loading chutes.

Illuminated loading chutes



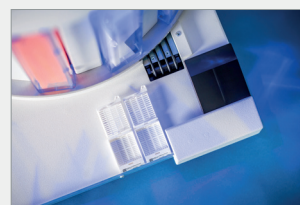
The number of remaining cassettes can be easily seen through the transparent loading chutes with blue LED backlight.

Single cassette printer



The printer is also available separately without Autoloader. Load one cassette at a time. Printing speed is extremely fast at about 6 seconds per cassette.

*Autoloader version**



4 x 40 cassettes can be automatically loaded for a batch print. Printing speed is very fast at about 8 seconds per cassette.

* The Autoloader version is available as an extension to the single cassette printer Printtec C.



SLEE medical GmbH • Am Neuberg 14
55268 Nieder-Olm • Germany
www.slee.de

T: +49 (0) 6136 76997-0

E: mail@slee.de



www.slee.de



[YouTube](#)



[LinkedIn](#)



[Instagram](#)